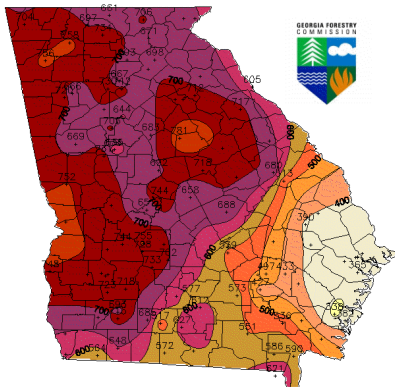




Georgia Wildfires 2016

Fire Situation Report for 11/15/2106

Map of KBDI
at November 14, 2016 1300 EST



Georgia Automated Environmental Monitoring Network provided 73% of the stations in the map.

Statewide Situation November 15 as of 9:00 am		
New Fires 11/14/2016 (yesterday)	24	383 acres
Active State Fires	12*	27,027 acres*
Total Fires Since 1/1/2016 with Fire Report	4,128	19,314 acres**
Drought Index (KBDI)	Range of 365 near the coast to 781 in NW and W GA	42% of state in extreme and exceptional drought

*Includes wildfires not contained from previous days

**Includes wildfires from state and private lands only, no federal acres

SIGNIFICANT FIRES	COUNTY	ACRES	% CONTAINED
Fox Mountain Fire*	Dade	2,039	100%
Rocky Face Fire	Whitfield	590	98%
Rough Ridge Fire**	Fannin	21533	20%
Tatum Gulf	Dade	1500	10%
Lookout Mountain/Sulfur Springs****	Dade	500	100%
Treat Mountain Fire	Polk/Haralson	583	99%
Rock Mountain Fire***	Rabun	5484	10%
Flat Branch Fire***	Rabun/Towns	600	4%
Creek Road fire	Dade	100	98%
Timber Bluff***	Rabun	850	15%

*Fox Mountain Fire being monitored for interior re-burning and escape potential

** Rough Ridge Fire on USFS lands and located in national wilderness area and under confinement strategies.

***The Rock Mountain, Timber Ridge and Flat Branch Fires on USFS lands and under confinement strategies

****Lookout mountain fire now combined with
Tatum Gulf

SIGNIFICANT EVENTS

Structures threatened 60 houses in the Highland Park community were evacuated Sunday, 11/13.	Dade County	Est. of 200 homes
---	-------------	-------------------

Smoke from wildfires in AL, GA, TN and NC is expected to affect visibility and air quality. The National Weather Service and Georgia EPD are coordinating on special weather statements and air quality alerts. Information on air quality can also be viewed here .	Metro Atlanta and areas west and south of Atlanta today 11/15/2016 due to winds generally from the NE. Information on air quality can also be viewed here .
---	---

Governor Nathan Deal issued an Executive Order declaring a drought and banning the ignition of consumer fireworks in affected counties	See full list of counties here .
---	--

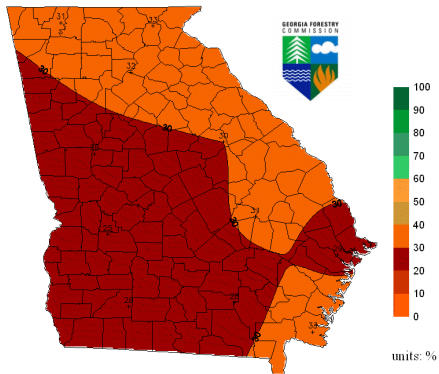
The state has requested and received Fire Management Assistance Grant authorizing federal funds to reimburse costs to Georgia to fight the Tatum Gulf Fire burning in Dade County. This authorization makes FEMA grant funding available to reimburse 75 percent of the eligible firefighting costs for managing, mitigating and controlling the fire. Eligible costs can include labor, equipment and supplies used for fighting the fire and costs for emergency work such as evacuations and sheltering, police barricading and traffic control.	Dade County
--	-------------

GEORGIA FORESTRY
COMMISSION

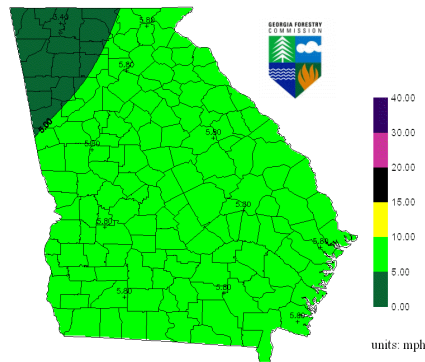


FIRE WEATHER OUTLOOK

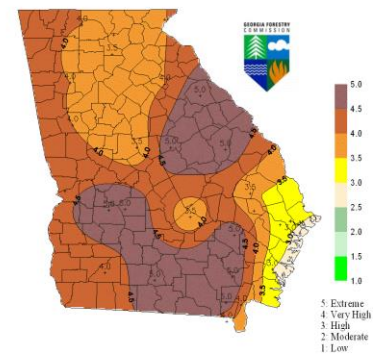
Forecasted Relative Humidity for Today
Produced at November 15, 2016 730 EST



Forecasted Wind Speed for Today
Produced at November 15, 2016 730 EST



Forecast Fire Danger for Tomorrow
Produced at November 14, 2016 130pm EST



COOPERATORS ASSISTING WITH WILDFIRE SUPPRESSION EFFORTS

Georgia Emergency Management Agency	Georgia Department of Natural Resources	Georgia Department of Corrections
Local Emergency Management Operations	Local Fire Departments	US Forest Service
Local Law Enforcement Agencies		

CONTACT INFORMATION

Information Center

Wendy Burnett

Public Relations Director

wburnett@gfc.state.ga.us

478-751-3535