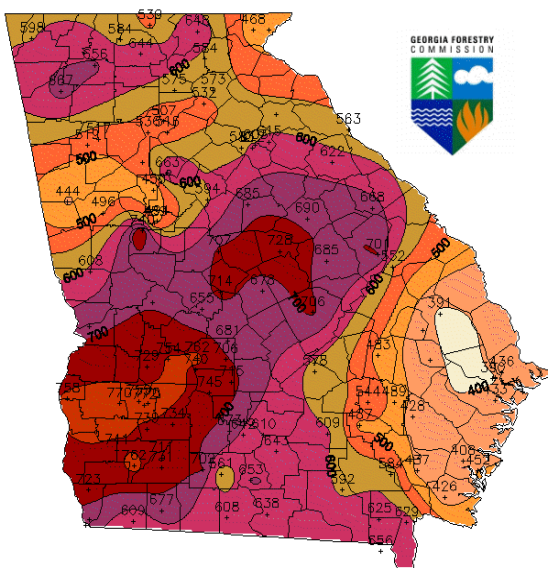




Georgia Wildfires 2016

Fire Situation Report for 11/30/2016

**Map of KBDI
at November 29, 2016 1300 EST**



Georgia Automated Environmental Monitoring Network provided 75% of the stations in the map.

New Fires 11/29/2016 (yesterday)	12	14 acres
Active State Fires	9*	7438 acres*
Total Fires Since 1/1/2016 with Fire Report	4,680	23,814 acres**
Drought Index (KBDI)	Range of 350 near the coast to 770 in NW and W GA	56.6% of state in extreme and exceptional drought

*Includes wildfires not contained from previous days but does not include fires being handled by the USFS within the state

** Includes wildfires from state and private lands only, no federal acres

SIGNIFICANT FIRES	COUNTY	ACRES	% CONTAINED
Rock Mountain Fire***	Rabun	24725	55%
Wright Road Fire	Gilmer	78	80%
Tatum Gulf Fire	Dade	2836	80%
Rough Ridge Fire**	Fannin	27870	87%
Timber Ridge***	Rabun	888	98%
Barron Road Fire	Coweta	117	100%
Irwin Mill Fire	Gordon	107	100%
Bell Road Fire	Polk/Haralson	1551	100%
Treat Mountain Fire	Polk/Haralson	558	100%
Ellis Road Fire	Spalding	114	100%
Creek Road Fire	Dade	72	100%
Paul Lord Fire	Johnson	193	100%
Rocky Face Fire	Whitfield	590	100%

Flat Branch Fire****	Rabun/Towns	600	100%
Fox Mountain Fire*	Dade	2,083	100%

** Rough Ridge Fire on USFS lands and located in national wilderness area and under confinement strategies.

***The Rock Mountain and Timber Ridge fires are on USFS lands and under confinement strategies

**** Rock Mountain and Flat Branch fires have burned together and are now one fire.

****Lookout Mountain fire now combined with Tatum Gulf

Fires that are at 100% contained are being monitored daily for potential reburns as the leaves start to fall and cover containment lines.

SIGNIFICANT EVENTS

Structures Threatened-Tatum Gulf Fire

Dade County

Est. of 60

Smoke from wildfires in AL, GA, TN and NC is expected to affect visibility and air quality. The National Weather Service and Georgia EPD are coordinating on special weather statements and air quality alerts. Information on air quality can also be viewed [here](#).

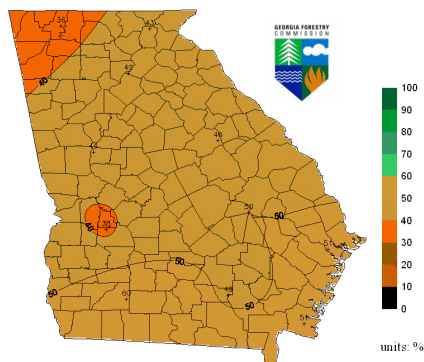
Metro Atlanta and areas around Atlanta should not see any smoke today due to a southerly wind direction and rain that is helping with the fires. Information on air quality can also be viewed [here](#).

Governor Nathan Deal issued an [Executive Order](#) declaring a drought and banning the ignition of consumer fireworks in affected counties

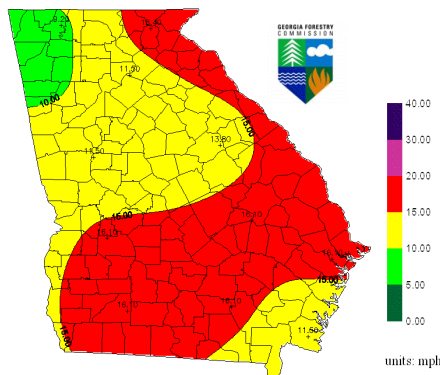
See full list of counties [here](#).

FIRE WEATHER OUTLOOK

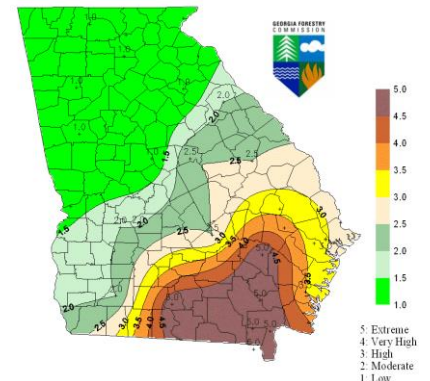
Forecasted Relative Humidity for Today
Produced at November 30, 2016 730 EST



Forecasted Wind Speed for Today
Produced at November 30, 2016 730 EST



Forecast Fire Danger for Tomorrow
Produced at November 29, 2016 130pm EST



GEORGIA FORESTRY
COMMISSION



COOPERATORS ASSISTING WITH WILDFIRE SUPPRESSION EFFORTS

Georgia Emergency Management Agency	Georgia Department of Natural Resources	Georgia Department of Corrections
Local Emergency Management Operations	Local Fire Departments	US Forest Service
Local Law Enforcement Agencies		

CONTACT INFORMATION

Information Center

Wendy Burnett

Public Relations Director

wburnett@gfc.state.ga.us

478-751-
3535