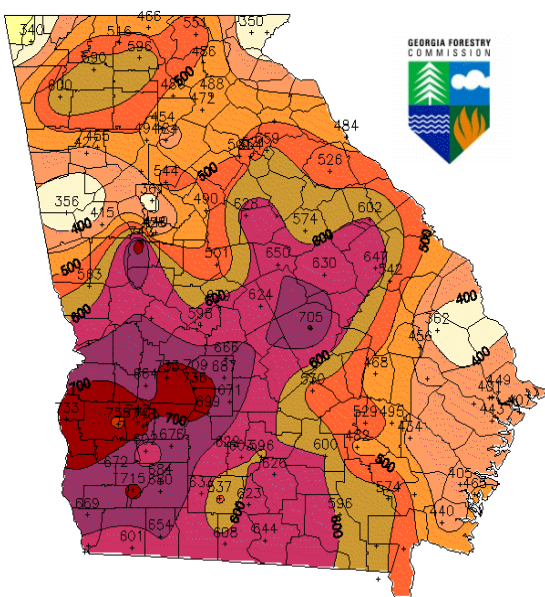




Georgia Wildfires 2016

Fire Situation Report for 12/02/2016

**Map of KBDI
at December 1, 2016 1300 EST**



Georgia Automated Environmental Monitoring Network provided 75% of the stations in the map.

New Fires 12/1/2016 (yesterday)	3	3 acres
Active State Fires	1*	2836 acres*
Total Fires Since 1/1/2016 with Fire Report	4,749**	24,147 acres**
Drought Index (KBDI)	Range of 362 near the coast to 755 in NW and W GA	62.3% of state in extreme and exceptional drought

*Includes wildfires not contained from previous days and fires being actively monitored but does not include fires being handled by the USFS within the state

** Includes wildfires from state and private lands only, no federal acres

SIGNIFICANT FIRES	COUNTY	ACRES	% CONTAINED
Rock Mountain Fire***	Rabun	24725	70%
Tatum Gulf	Dade	2836	95%
Rough Ridge Fire**	Fannin	27870	95%

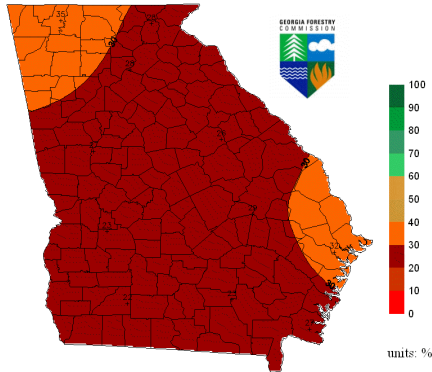
** Rough Ridge Fire on USFS lands and located in national wilderness area and under confinement strategies.

***The Rock Mountain is on USFS lands and under confinement strategies

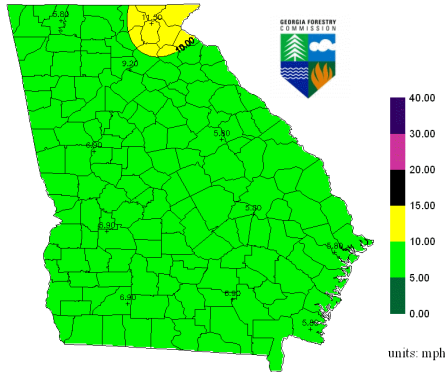
SIGNIFICANT EVENTS

FIRE WEATHER OUTLOOK

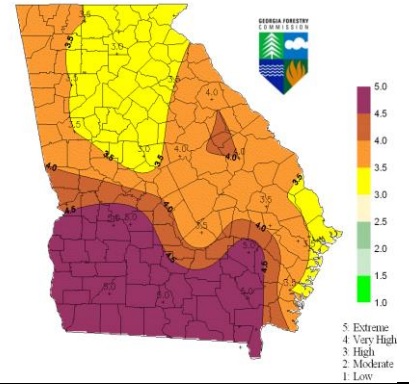
Forecasted Relative Humidity for Today
Produced at December 2, 2016 730 EST



Forecasted Wind Speed for Today
Produced at December 2, 2016 730 EST



Forecast Fire Danger for Tomorrow
Produced at December 1, 2016 130pm EST



COOPERATORS ASSISTING WITH WILDFIRE SUPPRESSION EFFORTS

Georgia Emergency Management Agency	Georgia Department of Natural Resources	Georgia Department of Corrections
Local Emergency Management Operations	Local Fire Departments	US Forest Service
Local Law Enforcement Agencies		

CONTACT INFORMATION

Information Center

Wendy Burnett

Public Relations Director

wburnett@gfc.state.ga.us

478-751-3535