



A Tale of Two Georgia Trees

In Georgia, we grow trees! Whether it is in the rural forest or urban and community forest, Georgia recognizes the different and important aspects of trees in our lives.

Rural Trees

Landscape

Rural forests consist of millions of acres owned by thousands of private citizens, a good percentage of whom are tree farmers. Rural forests sustain many products people depend on in their daily lives.

Benefit Sampling

- Commercial forestry is the **number one agricultural economic impact** valued at \$25.4 billion annually. It boosts the economy of rural communities and provides 170,000 jobs for families.
- Commercial forestry **provides products people depend on for daily living** (e.g. lumber and wood products, toothpaste, newspaper and paper products, cellophane, plastics, insulation, lacquers, photographic film, carpeting, dyes, drugs, fabrics, furniture, boxes, cosmetics, perfumes, soap, rubber products, syrup, chewing gum, waxes, inks, and shoe polish).
- Forests provide **clean air, clean water, and greenspace** for all citizens.

Threats

- **Land-use conversions** from commercial forest land to urban developments like shopping centers and housing subdivisions is often led by higher taxes. This causes commercial forestry companies to sell off large tracts of land because timbering can no longer be profitable in that area.



- **Wildfires** started by people in rural forests and in the urban-rural interface area where homes neighbor forests burn an average of 45,000 acres per year.
- **Lack of adherence to standards** for forestry management practices exists among some private landowners and companies.

Stewardship

- **Wise land-use** maximizes water, timber, wildlife, and recreational aspects of the forest.
- Controlled burning practices, burning permits, and the prescribed burn certification program **control forest fires and promote healthy forests.**
- **Safe outdoor burning practices** by homeowners protect lives, homes, and our natural resources from wildfire.
- **Best Management Practices** of the commercial forestry industry include road and landing designs, timber harvesting, site preparation, reforestation (Sustainable Forestry Initiative), fire control, pesticides, and fertilization.
- **Wise management** of forests provides for multiple benefits.

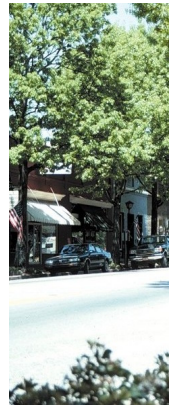
Urban & Community Trees

Landscape

Urban and community forests are the trees in our backyards, along our streets, and throughout our communities. These trees provide natural beauty to cities and towns, and protect our economic, social, and environmental quality of life.

Benefit Sampling

- **Home property values increase** by 15 percent with trees, which also **save** as much as 30 percent on summer **cooling** and 23 percent in winter **heating.**
- Forested apartments can **increase occupancy rates.**
- Tree-lined business/retail districts encourage patrons to shop longer. **Increased business** attracts new business and conventions.
- Forested office areas are in high demand as employers seek quality of life **enhancements for employees.**
- Trees **absorb carbon dioxide, give oxygen, lessen heat buildup, and give shade.** Lung-damaging particles are filtered or trapped. Trees are also **natural water filters** and help **slow stormwater** movement, which lowers runoff volume, soil erosion, and flooding. Trees even **reduce urban noise, and provide wildlife habitats.**



Threats

- **Urban sprawl** is accelerating statewide, particularly in the Atlanta metro area which is the fastest growing settlement in the history of mankind and is losing 50 acres of forested land each day because of urban development.
- **Lack of community tree ordinances,** existing ordinances that do not plan for growth with trees in mind, and ordinances that are not enforced endanger the future of community forests.
- **Tree failure** is caused by severe weather, non-maintained trees, and improper pruning/removal.

Stewardship

- **Tree City USA** provides education and recognition for community tree care.
- **Operation GA Urban Tree Safety** provides information on how to have safe urban forests.
- **Professional urban foresters** help consumers, grassroots organizations, and municipal and county governments assess and conserve the benefits of local urban forests. They advise on issues such as community tree ordinances, tree board development, conservation advocacy group development, issue and hazard counsel, greenspace development, community forest water quality, the importance of rural forestry and products produced, and school and nonprofit group tree plantings and education.

For more information, call the Georgia Forestry Commission or visit our Web site.

1-800-GA-TREES
www.gfc.state.ga.us