



Cogongrass in Georgia Winter 2022 Update

January 1, 2021 - December 31, 2021

Forest Health Staff

Record high number of cogongrass detections made in 2021.

In 2021, Irwin, Jones, and Pierce Counties were the only counties reporting cogongrass for the first time. There were 156 detections in 2021, bringing the number of known cogongrass spots in the state to 1621, scattered across 72 counties. Overall, these values reflect a 40% increase in new detections in 2021 compared to 2020. Furthermore, there were 86 sites eradicated in 2021. The 1621 cogongrass spots encompass a total of 418 acres. The status and treatments for each spot varies. The Georgia Forestry Commission recognizes a spot as eradicated after three consecutive years of finding no cogongrass resprouts. Presently, **1100 spots** have been eradicated, **132 spots** have been negative for two years, and **160 spots** have been negative for one year, with the remaining **229 spots** classified as active. Figure 1, below, displays the annual cogongrass status from 2015 to 2021. Overall, approximately 86% of all known spots are now negative for cogongrass. A breakdown into the various categories based on percentages can be seen in Figure 2, below. Landowners with questions regarding the status of the cogongrass spot(s) on their property should contact their regional Forest Health specialist.

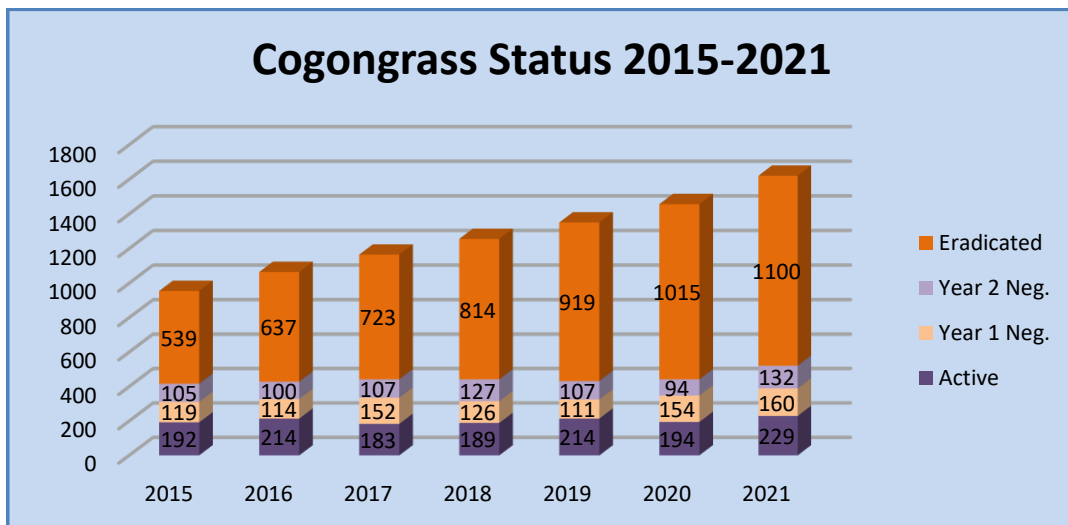


Figure 1: Cogongrass Status Chart.

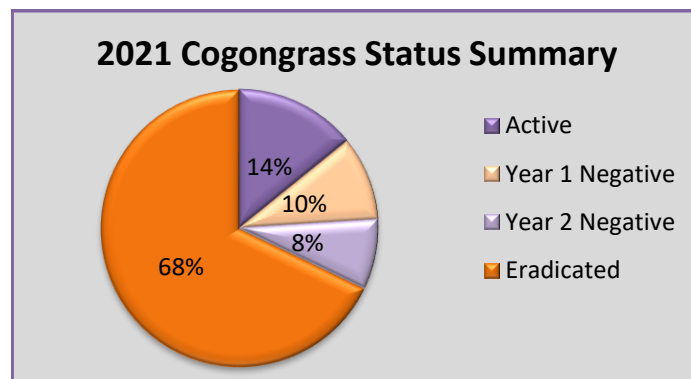
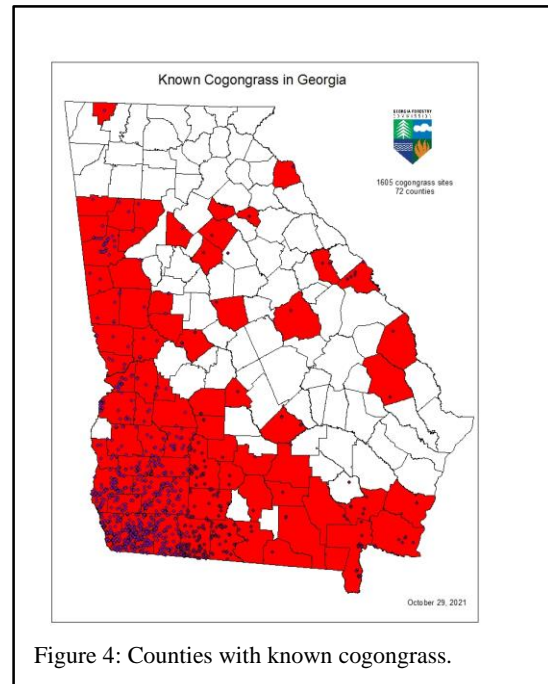
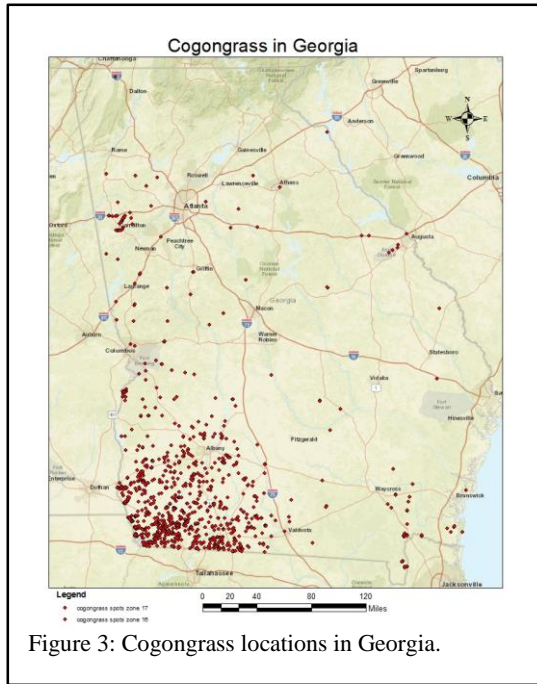


Figure 2: Cogongrass status classified categorically by percentage.

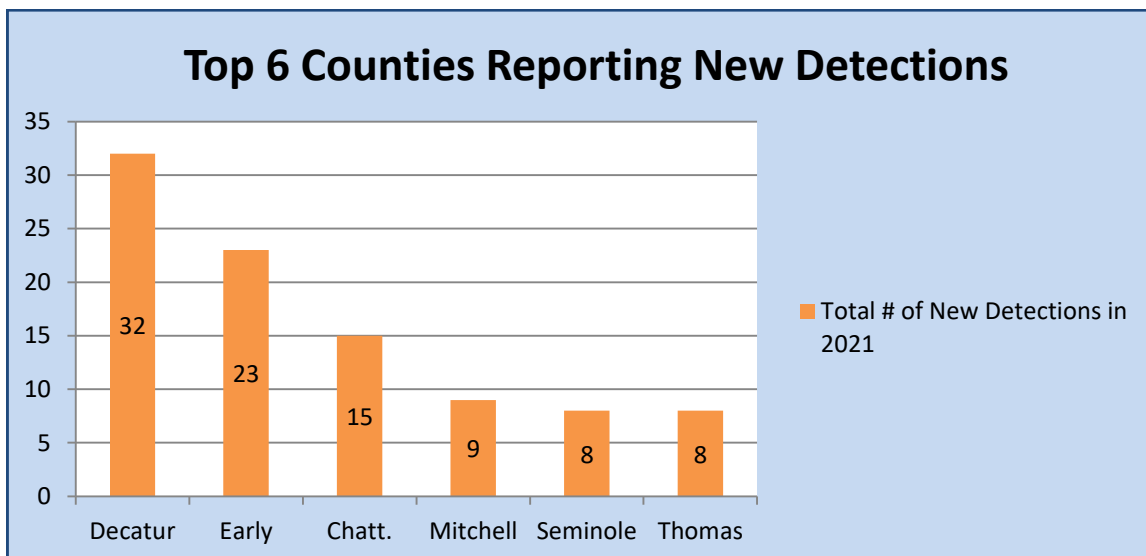
Where are the cogongrass spots in Georgia located?

The majority of cogongrass detections have been found in southwest Georgia. However, numerous spots are located along the western side of the state bordering Alabama, along with spots in southeast Georgia near the Florida border. Figure 3 is a road map displaying all cogongrass locations, while Figure 4 displays counties with known cogongrass.



Which counties had the most detections in 2021?

The top six reporting counties in 2021 were Decatur, Early, Chattahoochee, Mitchell, Seminole, and Thomas. The graph below, (figure 5) charts the number of new detections in each county.



Where are cogongrass sites being detected?

The most common cogongrass detections in Georgia are located within thinned pine stands or along road and utility rights-of-way. Approximately 74% of all cogongrass detections have been in thinned pine stands and 18% along right-of-ways. An additional eight percent have been unique detections in places such as pastures, pond dams, urban landscapes, flower beds, welcome centers, wildlife food plots, and in coastal sand dunes along. These sites are of special interest to specialists tracking the movement and spread of this exotic, invasive species.

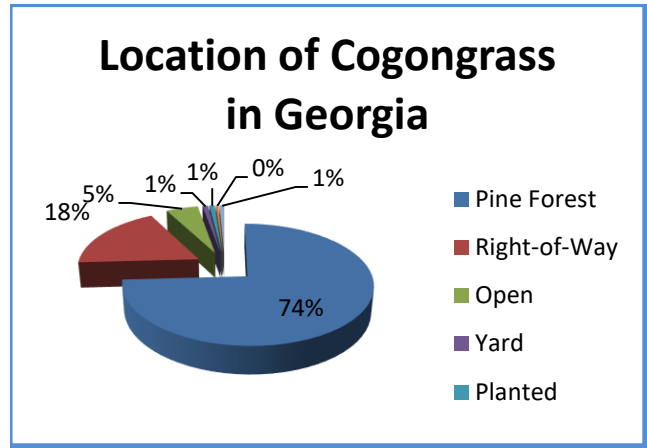


Figure 7: Cogongrass locations by site type.

Overall, what counties are impacted the most by cogongrass?

The southwest corner of the state continues to be the cogongrass epicenter in Georgia. Decatur, Early, Thomas, Seminole, Grady, Mitchell, Baker, Miller and Worth counties, located in southwest Georgia, and Carroll County, located in west Georgia, complete the top 10 ranking counties by number of detections. Figure 8, below, displays the total number of cogongrass acres adjacent to the total number of spots.

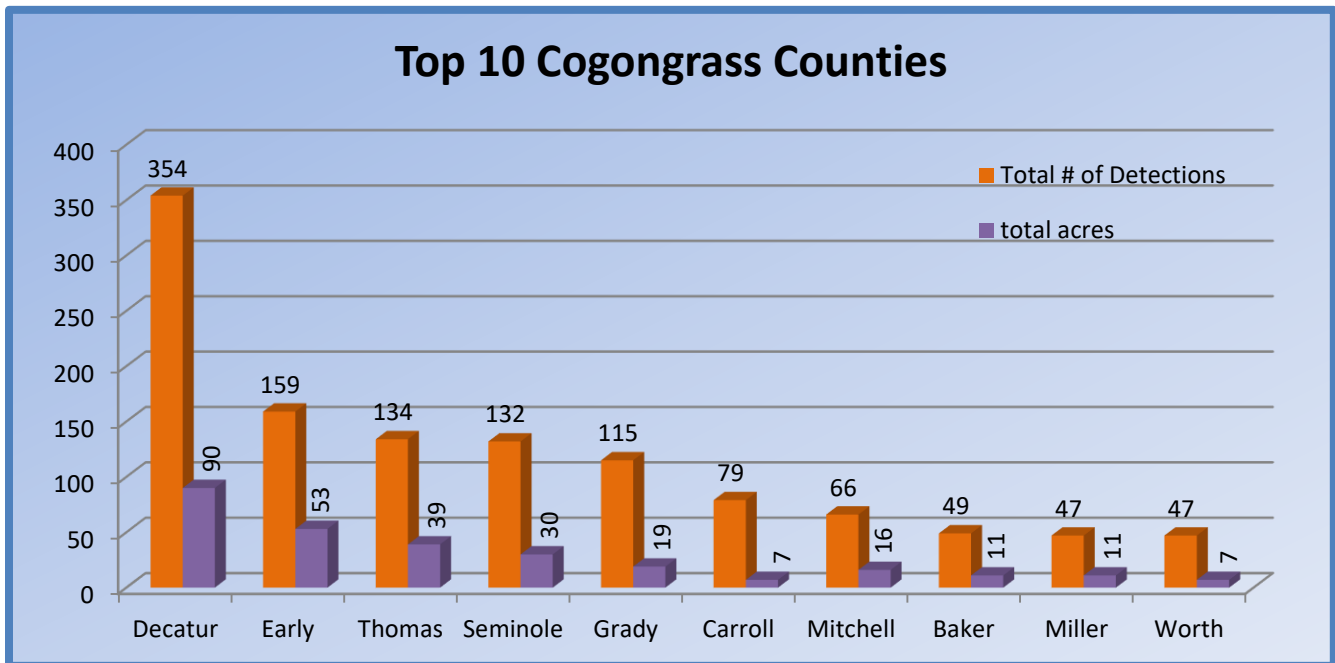


Figure 8: Top ten cogongrass counties.

What is the cogongrass status in these counties?

Approximately 86% of all known cogongrass spots in Georgia are considered inactive. However, this percentage varies among counties. Figure 9, below, displays the number of active and inactive spots in the top 10 counties.

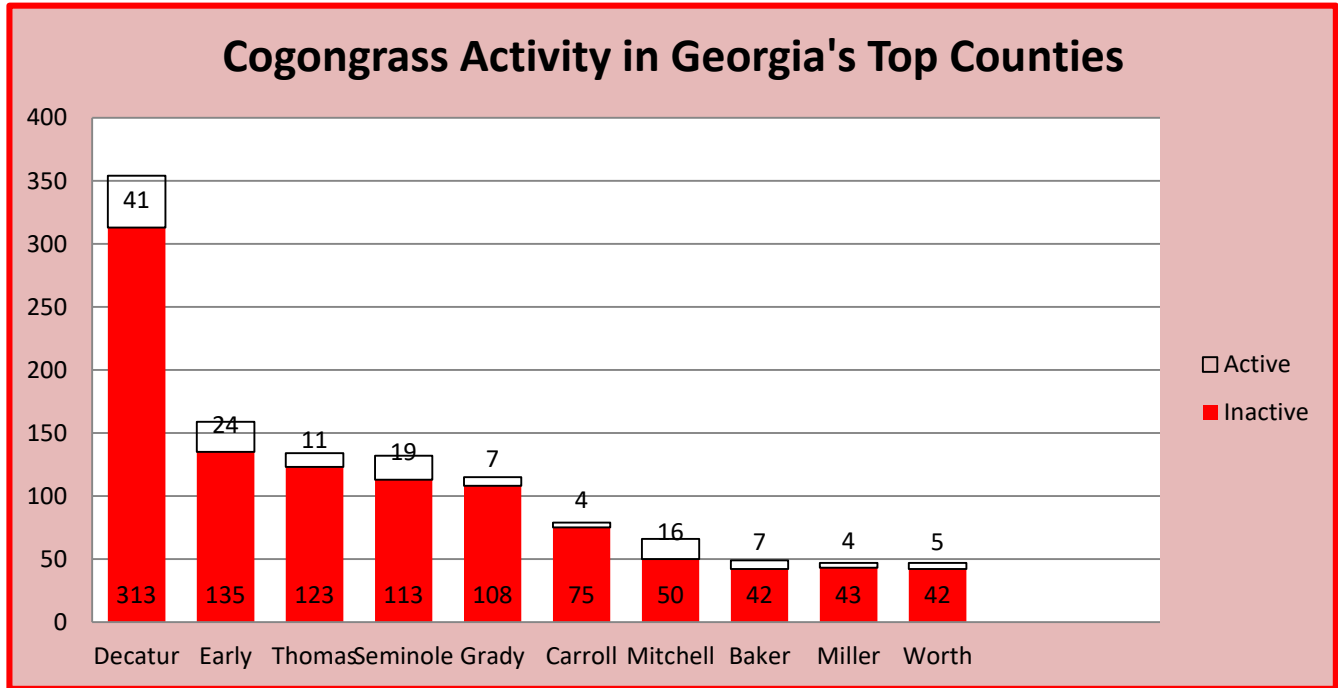


Figure 9: Cogongrass activity in Georgia's top ten counties.

How many cogongrass spots have been detected annually since the Georgia Forestry Commission began its lead role in 2007? Cogongrass detections have ranged from a low of 37 in 2007 to a high of 156 in 2021. Over this time period there have been an average of 103 cogongrass detections annually. Figure 10, below, shows annual detections since 2007.

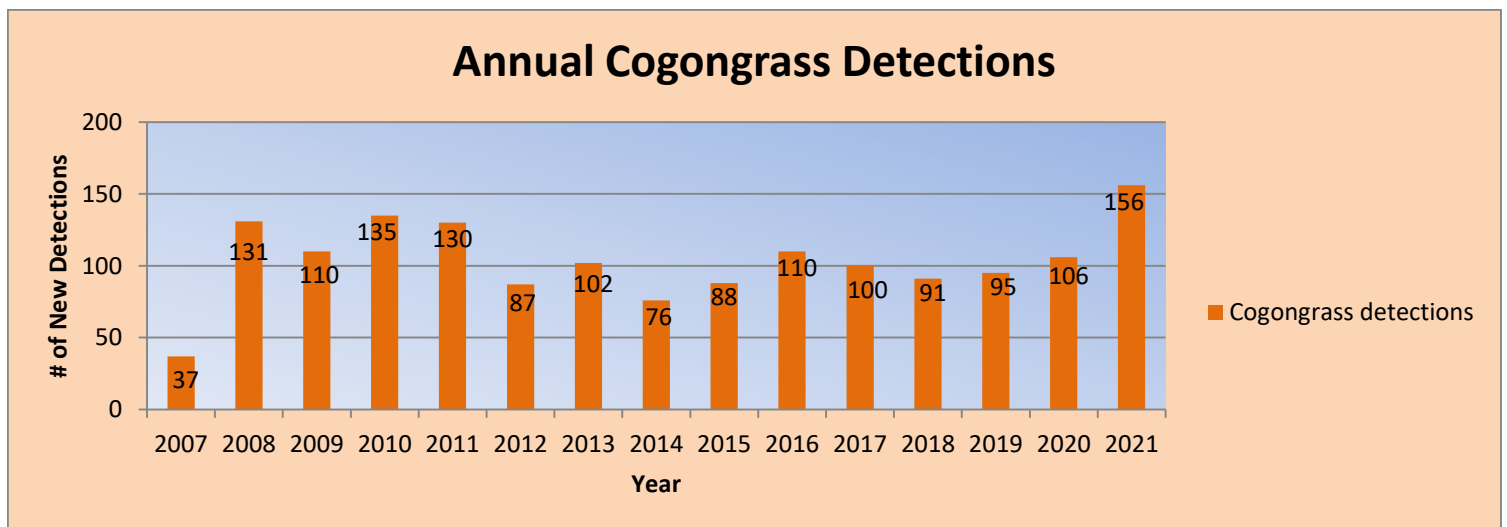


Figure 10: Annual cogongrass detections.

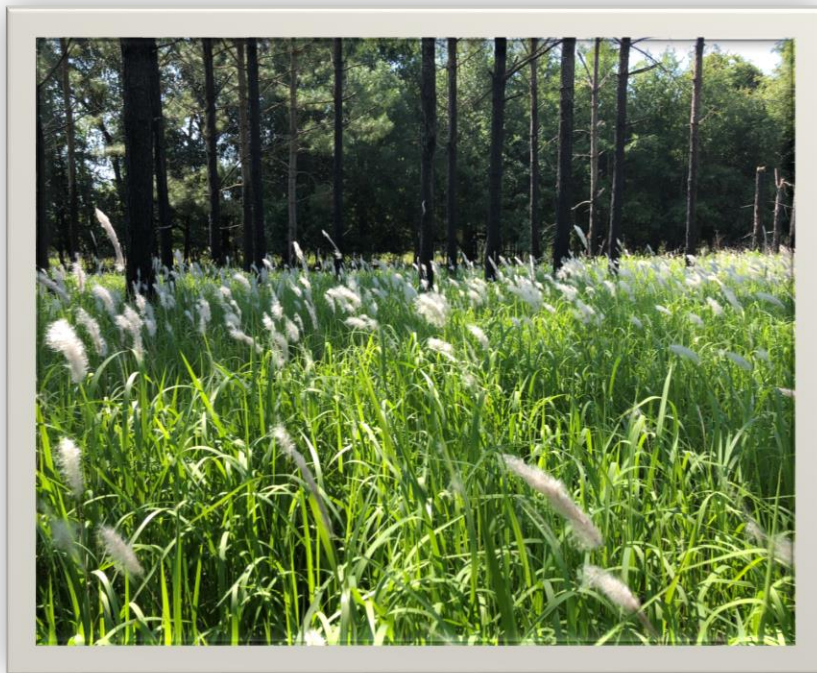
Georgia cogongrass facts as of 2021:

- This marked the 15th year the Georgia Forestry Commission has held the lead role in the cogongrass detection and eradication program.
- The Georgia Forestry Commission will continue to treat new cogongrass detections for landowners at no cost.
- All cogongrass spots continue to be monitored and treated annually until eradicated.
- Workshops, presentations, field days, etc. continue to be delivered to further educate Georgians about identifying and controlling invasive species. Twenty-one landowner programs were conducted delivering the cogongrass message to landowners and natural resource professionals. Many more programs were delivered by our task force partners.
- 86% of the total number of spots are negative (yr. 1, yr. 2, or eradicated).
- 76% of the total cogongrass acreage is negative.
- The average size cogongrass spot is between 0.10 and 0.25 acres. The largest spot treated in 2021 was 5.0 acres.
- One hundred fifty-six (156) new detections in 2021 was the largest single year total since the program began.
- Seventy-two counties have had positive cogongrass detections. Thirty-four of 72 cogongrass counties are now negative.

Mary Nieminen with DNR Wildlife Resources Division was the cogongrass detection winner for 2021!

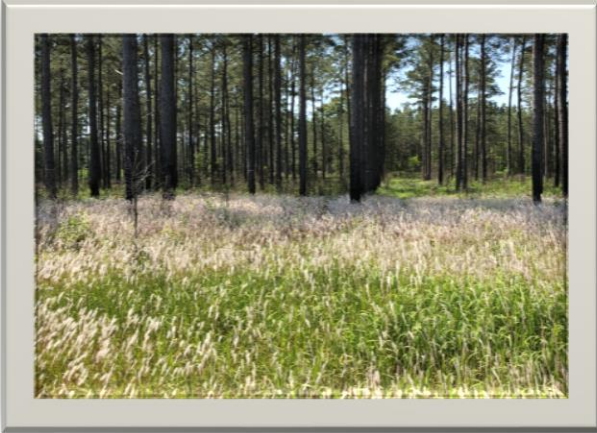
The Georgia Forestry Commission Forest Health staff held a contest to recognize the person detecting the greatest number of cogongrass spots. Numerous Natural Resource professionals and landowners reported new cogongrass findings. However, Mary Nieminen with DNR detected the most new spots while working with landowners and performing land management activities in southwest Georgia. Mary was awarded a special aluminum holder field note pad.

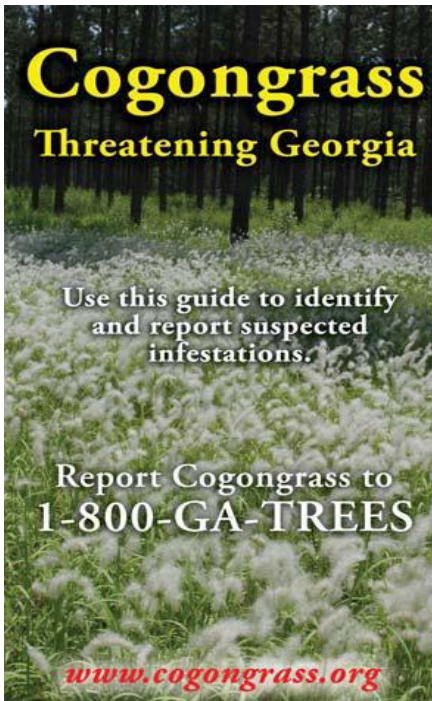
The GFC Forest Health Dept. will once again award a prize to the person who locates the most positive detections in 2022. Therefore, all landowners and resource professionals are encouraged to search for cogongrass during the 2022 calendar year.



How to identify cogongrass:

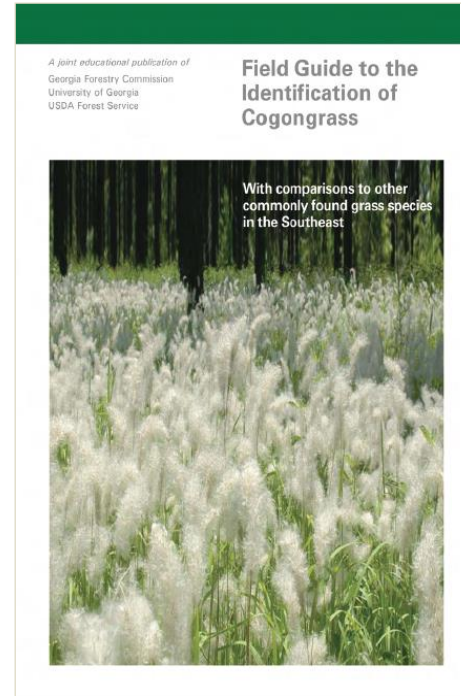
Spring flowering season is the easiest time to detect cogongrass infestations. Cogongrass primarily flowers between April and early June. The white, fluffy seed heads are visible from a distance. However, the distinct golden brown coloration in late fall through winter following frost makes cogongrass visible during the colder months of the year as well. Cogongrass is most difficult to detect during the growing season. The most distinguishable feature of cogongrass is its dense, sharp, pointed rhizome root system, and it is recommended the rhizomes be dug up to make a positive identification.





Cogongrass identification brochure and pocket ID available from the Georgia Forestry Commission.

Contact your local GFC office or regional Forest Health specialist to obtain copies of these publications.



How do I report a suspected cogongrass spot?

Call your county Georgia Forestry Commission office or contact your regional Forest Health specialist. A resource professional will visit the site to make a positive identification. The Georgia Forestry Commission will continue to spray all cogongrass detections in 2022 at no cost to the landowner. Landowners are required to sign a spray agreement with the Georgia Forestry Commission to legally allow resource professionals to access the property and spray the identified cogongrass. All positive detections are monitored annually until eradicated.

Landowners are encouraged to share information concerning cogongrass with their family, friends and adjoining landowners. It is important to realize that invasive plants such as cogongrass invade natural ecosystems and displace natural plant communities. Therefore, invasive species have a negative impact on our forest resources.

Forest Health Specialists:

North Region
 Brandon Merz
 3005 Atlanta Hwy.
 Gainesville, GA 30507
 (c) 912-536-7544
bmerz@gfc.state.ga.us

Southwest Region
 Mark McClure
 2910 Newton Rd.
 Albany, GA 31701
 (c) 229-869-8592
mmcclure@gfc.state.ga.us

Southeast Region
 Chris Barnes
 5645 Riggins Mill Rd.
 Dry Branch, GA 31020
 (c) 912-601-7093
cbarnes@gfc.state.ga.us

Program Coordinator
 Lynne Womack
 4472 Martha Berry Hwy
 Rome, GA 30165
 (c) 912-515-5180
lwomack@gfc.state.ga.us

