



# **Community Wildfire Protection Plan**

## ***An Action Plan for Wildfire Mitigation and Conservation of Natural Resources***

### **Jefferson County, Georgia**

---

A Program of the Georgia Forestry Commission  
with support from the U.S. Forest Service



JULY, 2017

**SIGNATURE PAGE**

---

Honorable Mitchell McGraw, Chairman  
Board of County Commissioners  
Jefferson County

---

Date

---

Jim Anderson  
EMA Director, Fire Chief  
Jefferson County

---

Date

---

Dave Beachy  
District Fire Chief  
Jefferson County Fire Department

---

Date

---

Keith Boulineau  
President  
Jefferson County Fire Association

---

Date

---

Shane Barrow  
Chief Ranger/Forest Tech  
Georgia Forestry Commission

---

Date

Prepared by:

Shane Barrow, Glascock/Jefferson Chief Ranger / Forest Tech  
Eric Mosley, Community Wildfire Protection Specialist  
Beryl Budd, Wildfire Prevention Specialist (revised 2017)

Georgia Forestry Commission  
2755 Mennonite Church Rd  
Stapleton GA 30823

The following report is a collaborative effort among various entities; the representatives listed below comprise the core decision-making team responsible for this report and mutually agree on the plan's contents:

County Commission Chair, Jefferson County

Jefferson County Emergency Management Director

Jefferson County Fire Chief

Shane Barrow, Chief Ranger/Forest Tech  
Glascock/Jefferson County Forestry Unit  
Georgia Forestry Commission

Eric Mosley  
Community Wildfire Protection Specialist  
Georgia Forestry Commission

# PLAN CONTENTS

I. Objectives .....	1
II. Community Collaboration .....	1
III. Community Background and Wildfire History.....	3
IV. County Base Maps .....	8
V. Community Wildfire Risk Assessment .....	11
VI. Southern Wildfire Risk Assessment & Risk Hazard Maps .....	16
VII. Prioritized Mitigation Recommendations .....	19
VIII. Action Plan .....	23
IX. Grant Funding & Mitigation Assistance.....	26
X. Glossary.....	27
XI. Sources of Information.....	29

## Appended Documents:

Jefferson County Southern Wildfire Risk Assessment Summary (SWRA)

Jefferson County Wildfire Pre-suppression Plan

NFPA 1141 Standard for Fire Protection Infrastructure for Land Development in Suburban and Rural Areas.

## **I. OBJECTIVES**

A Community Wildfire Protection Plan (CWPP) provides a community with a road map to reduce its risk from wildfire. A CWPP is designed through collaboration between state and local fire agencies, homeowners and landowners, and other interested parties such as city councils, utilities, homeowners associations, environmental organizations, and other local stakeholders. The plan identifies strategic sites and methods for risk reduction and structural protection projects across jurisdictional boundaries.

Comprehensive plans provide long-term guidance for growth, reflecting a community's values and future expectations. The plan implements the community's values and serves to protect natural and community resources and public safety. Planning also enables communities to address their development patterns in the Wildland Urban Interface and determine how they can reduce their risk through alternative development patterns. The formal legal standing of the plan and its central role in local government decision making underscores the opportunity to use this planning process as an effective means for reducing wildfire risk.

The mission of the following plan is to set clear priorities for the implementation of wildfire mitigation in Jefferson County. The plan includes prioritized recommendations for the appropriate types and methods of fuel reduction and structure ignitability reduction that will protect this community and its essential infrastructure. It also includes a plan for wildfire suppression. Specifically, the plan includes community-centered actions that will:

- Educate citizens on wildfire, its risks, and ways to protect lives and properties,
- Support fire rescue and suppression entities,
- Focus on collaborative decision-making and citizen participation,
- Develop and implement effective mitigation strategies, and
- Develop and implement effective community ordinances and codes.

## **II. COMMUNITY COLLABORATION**

Wildfire risk reduction strategies are most effective when approached collaboratively – involving groups of residents, elected officials, community decision makers, emergency managers, and natural resource managers –and when combined with effective outreach approaches. Collaborative approaches make sense as the initial focus of any community attempting to work toward wildfire risk reduction. In all Community Wildfire Protection Plan collaborations, the goal is to cooperatively identify problems and reach a consensus for mutual action. In the case of wildfire mitigation, a reduction in the wildfire risk to the community's lives, houses, and property is the desired outcome.

The collaborative core team convened in early February 2011 to assess risks and develop the Community Wildfire Protection Plan. The group is comprised of representatives from local county government, local fire authorities, and the Georgia Forestry Commission.

Below are the groups included in the task force:

Jefferson County Government  
*County Fire Department*  
*Emergency Management*  
*Board of County Commissioners*  
Georgia Forestry Commission

It was decided to conduct community assessments on the basis of the high risk communities and the individual fire districts in the county. The Chief of the Jefferson County Fire Department and the representative of the local Georgia Forestry Commission office reconvened in late August and again in late October for the purpose of completing the following:

- |                        |   |
|------------------------|---|
| Risk Assessment        | Assessed wildfire hazard risks and prioritized mitigation actions. The wildfire risk assessment will help homeowners, builders, developers, and emergency personnel whether the area needs attention and will help direct wildfire risk reduction practices to the areas at highest risk.   |
| Fuels Reduction        | Identified strategies for coordinating fuels treatment projects.  |
| Structure Ignitability | Identified strategies for reducing the ignitability of structures within the Wildland interface.  |
| Emergency Management   | Forged relationships among local government and fire districts and developed/refined a pre-suppression plan.  |
| Education and Outreach | Developed strategies for increasing citizen awareness and action and to conduct homeowner and community leader workshops. Outreach and education programs are designed to raise awareness and improve audience knowledge of wildfire risk reduction needs and practices. In the best cases, education and outreach programs will influence attitudes and opinions and result in effective action. |

### III. COUNTY BACKGROUND AND WILDFIRE HISTORY

#### County Background



Jefferson County, in east central Georgia southwest of Augusta, was established in 1796 on land formerly a part of Burke and Warren counties. It was named after U.S. president Thomas Jefferson, author of the Declaration of Independence and the first U.S. secretary of state.

Louisville, the county seat, was the third capital of Georgia. Unlike its predecessors, Savannah and Augusta, it was founded specifically as the permanent state capital, with the first planned capitol building, which was completed in 1796. In recognition of French support during the Revolutionary War (1775-83), Georgia legislators named the town for Louis XVI, king of France (who had been executed three years earlier). The original design of Louisville was based on the squares of Philadelphia, Pennsylvania.

During the brief



**Jefferson County  
Courthouse**

period when Louisville was the state capital (1796-1806), the papers connected with the Yazoo land fraud were publicly burned and the Great Seal of Georgia was adopted (1799). According to the 1820 census the population of Jefferson County then included 3,932 free whites and 3,094 slaves. In 1807 Georgia government moved to its fourth capital, farther west in Baldwin County. The Jefferson County Courthouse (1904), a Neoclassical building designed by W. F. Denny, sits on the site of the original capitol.

By 1860 Jefferson County had 41 free blacks, 6,045 slaves, and 4,133 whites, of whom 431 were slaveholders. During the Civil War (1861-65), Louisville was a target on General William T. Sherman's march to the sea, and stores and houses on Broad Street were burned.

Jefferson County has maintained an agrarian base since its founding. In 1860 there were 475 farms. The 2002 U.S. Department of Agriculture Census showed 388 farms on a total of 137,217 acres across Jefferson County. Historically, cotton was the major cash crop. The Jefferson Energy Cooperative, based in Wrens, provides power for the area's farms, including cotton, wheat, timber, cattle, and dairy operations.

The author Erskine Caldwell (1903-87), though born in Coweta County, spent his young adult years in Jefferson County, where his father, a Presbyterian minister, was posted in the town of Wrens. Though he worked as a writer for the local newspaper, his job as a driver for a country doctor had greater impact. On house calls, he saw the squalid living conditions of early-twentieth-century sharecroppers and day laborers. His two most successful novels, *Tobacco Road* (1932) and *God's Little Acre* (1933), were inspired by his observations of the hard lives they led. *You Have Seen Their Faces* (1937), with the photographer Margaret Bourke-White (his second wife), also reflected his experiences during this time. As a journalist, he exposed in national magazine articles the mistreatment of tenant farmers in Jefferson and adjacent counties.

Other well-known residents of Jefferson County include two Georgia governors, William Schley and Howell Cobb, as well as Cobb's brother, jurist Thomas R. R. Cobb, who served as a general during the Civil War. Another Confederate general, Ambrose Wright, was born in Louisville and later became owner and editor of the *Augusta Chronicle*. Prominent twentieth-century state legislator Roy V. Harris also grew up in the county.

## **Wildfire History**

Recent data show that a majority of the fastest growing areas in the U.S. are in wildfire-prone environments. It is not a surprise that some of these fastest growing areas are in Georgia. In the last decade of the 20<sup>th</sup> Century, Georgia's population increased substantially. Homeowners in Georgia must contend with natural hazards including wildfire, tornados, and flooding. This combination of factors – burgeoning population, abundant natural areas, development pressures, and lack of public awareness makes Georgia a perfect state for creating solutions to various hazards. Georgia is looked to throughout the southern region as a leader in comprehensive and hazard mitigation planning.

Many of Georgia's existing and new residents living in the urban interface are unaware of the vital role fire plays in our landscape and that their homes are extremely vulnerable to wildfire damage. Balancing development pressures with wildfire risk reduction and education creates a unique challenge for local governments, emergency managers, and wildfire management agencies such as the Georgia Forestry Commission.

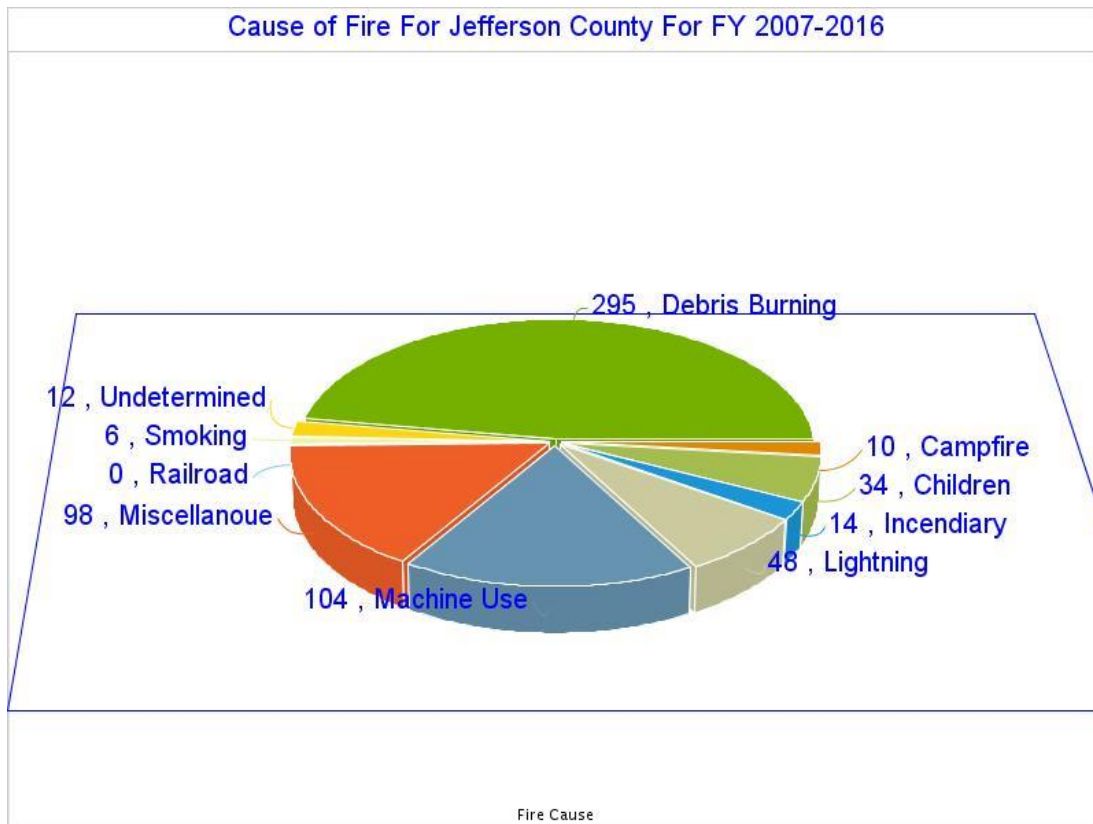
Over the past ten years, Jefferson County has averaged 63 reported wildfires per year. The occurrence of these fires is fairly uniform throughout the year with a slight peak in the months of February and March and a slight decrease during the fall months. These fires have burned an average of 171 acres annually. While the numbers of fires remain fairly similar every month, there is a marked difference in the monthly acreage lost. The monthly acres lost during the late winter through summer period show a tenfold increase over the acres lost during the fall and early winter. Additionally while the annual numbers of fires have not increased noticeably during the 10 year period that records are available, the annual acreage lost appears to have decreased in later years. This perhaps a result of the increase in the practice of prescribed burning. The local Georgia Forestry Commission office needs to be commended for their valiant work increasing their very impressive prescribed burning regiment. The Glascock / Jefferson Unit lead their district in Central Georgia for burning. Despite their work, more homes are being built outside of traditional communities into the wildland urban interface. With this migration of people to the wildland urban interface the potential for a wildfire disaster continues to increase for Jefferson County.

The leading cause of these fires in Jefferson County was careless Debris Burning, which accounted for 48% of the total. The second leading cause was Machine Use (17%) followed by a variety of miscellaneous causes (16%). Lightning started 8% of the wildfires during the 10 year period.

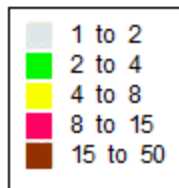
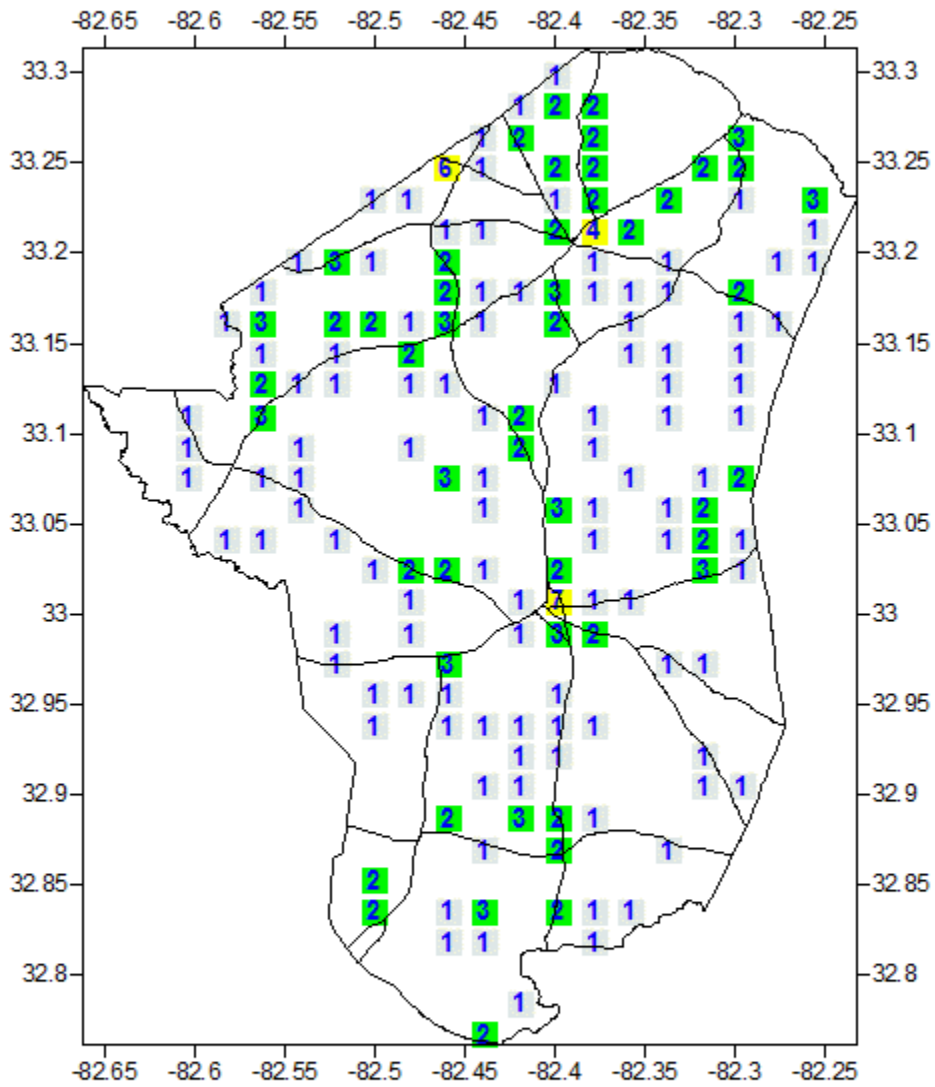


County = Jefferson	Cause	Fires	Acres	Fires 5 Yr Avg	Acres 5 Yr Avg
<a href="#">Campfire</a>	Campfire	0	0.00	0.60	1.05
<a href="#">Children</a>	Children	2	0.67	1.40	0.74
<a href="#">Debris: Ag Fields, Pastures, Orchards, Etc</a>	Debris: Ag Fields, Pastures, Orchards, Etc	2	1.72	3.00	12.82
<a href="#">Debris: Construction Land Clearing</a>	Debris: Construction Land Clearing	0	0.00	0.80	0.47
<a href="#">Debris: Escaped Prescribed Burn</a>	Debris: Escaped Prescribed Burn	4	86.49	3.80	24.29
<a href="#">Debris: Household Garbage</a>	Debris: Household Garbage	0	0.00	2.20	3.66
<a href="#">Debris: Other</a>	Debris: Other	1	0.11	2.00	7.24
<a href="#">Debris: Residential, Leafpiles, Yard, Etc</a>	Debris: Residential, Leafpiles, Yard, Etc	11	29.78	6.40	16.04
<a href="#">Debris: Site Prep - Forestry Related</a>	Debris: Site Prep - Forestry Related	2	37.30	4.60	21.06
<a href="#">Incendiary</a>	Incendiary	0	0.00	0.40	0.50
<a href="#">Lightning</a>	Lightning	2	15.50	1.80	5.33
<a href="#">Machine Use</a>	Machine Use	3	7.00	4.00	15.95
<a href="#">Miscellaneous: Cutting/Welding/Grinding</a>	Miscellaneous: Cutting/Welding/Grinding	0	0.00	0.20	2.46
<a href="#">Miscellaneous: Firearms/Ammunition</a>	Miscellaneous: Firearms/Ammunition	0	0.00	0.20	0.37
<a href="#">Miscellaneous: Other</a>	Miscellaneous: Other	1	0.06	1.00	10.96
<a href="#">Miscellaneous: Power lines/Electric fences</a>	Miscellaneous: Power lines/Electric fences	2	1.09	4.40	4.45
<a href="#">Miscellaneous: Structure/Vehicle Fires</a>	Miscellaneous: Structure/Vehicle Fires	1	0.16	1.40	0.76
<a href="#">Miscellaneous: Woodstove Ashes</a>	Miscellaneous: Woodstove Ashes	0	0.00	0.60	0.12
<a href="#">Railroad</a>	Railroad	2	1.81	1.20	1.93
<a href="#">Undetermined</a>	Undetermined	9	31.02	4.20	15.96
<b>Totals for County: Jefferson Year: 2017</b>		42	212.71	44.20	146.15

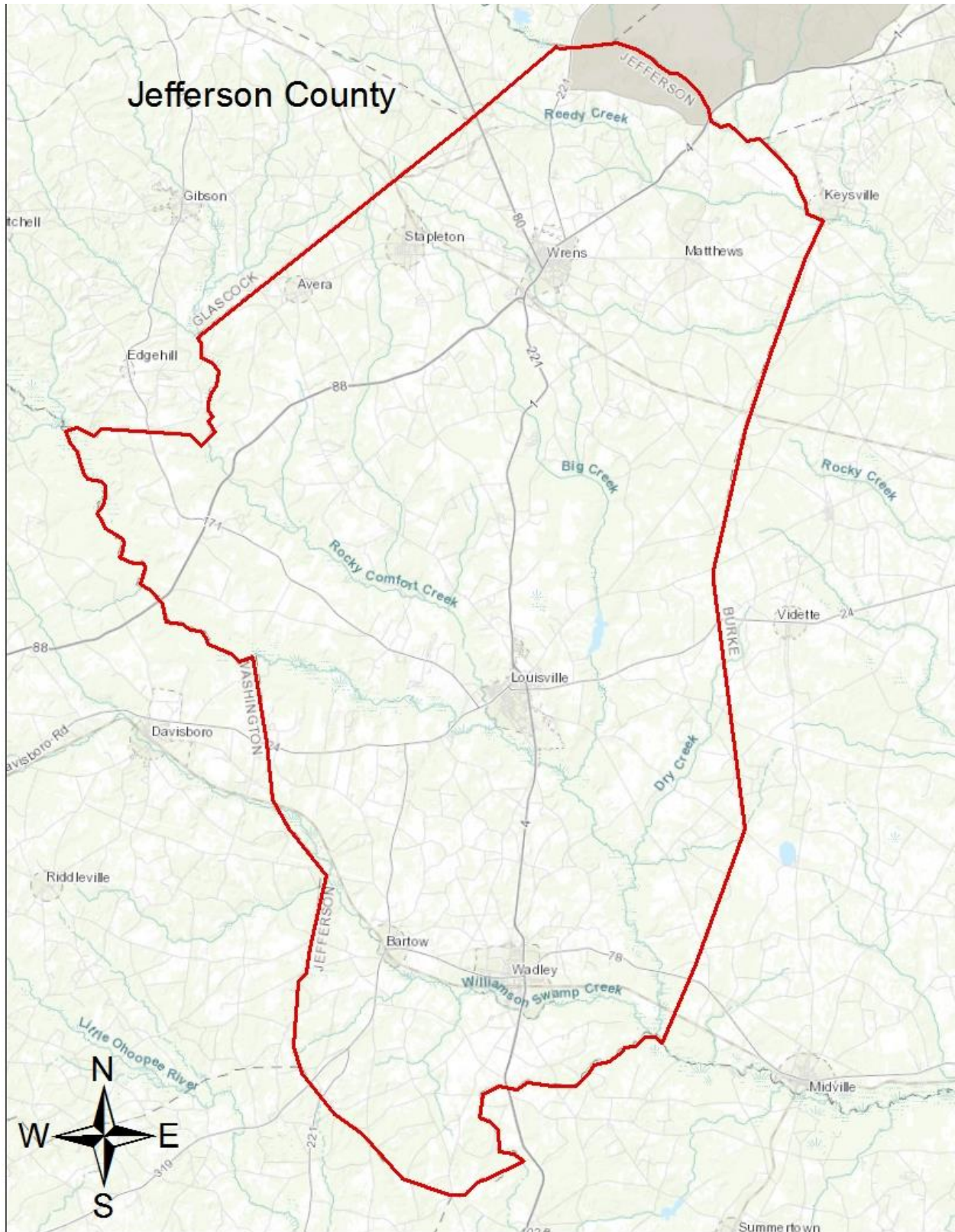
Acreage Burned /Number of Fires For Jefferson County For FY 2007-2016				
Year	Acreage Burned	Number of Fires	Average Size	Statewide Average Size
2007	247.84	90	2.75	18.64
2008	257.76	89	2.90	4.56
2009	203.61	58	3.51	3.90
2010	41.57	33	1.26	3.93
2011	311.99	111	2.81	17.56
2012	133.01	69	1.92	5.08
2013	122.10	48	2.54	4.53
2014	166.12	49	3.39	5.02
2015	192.35	50	3.85	4.42
2016	37.49	32	1.17	6.29



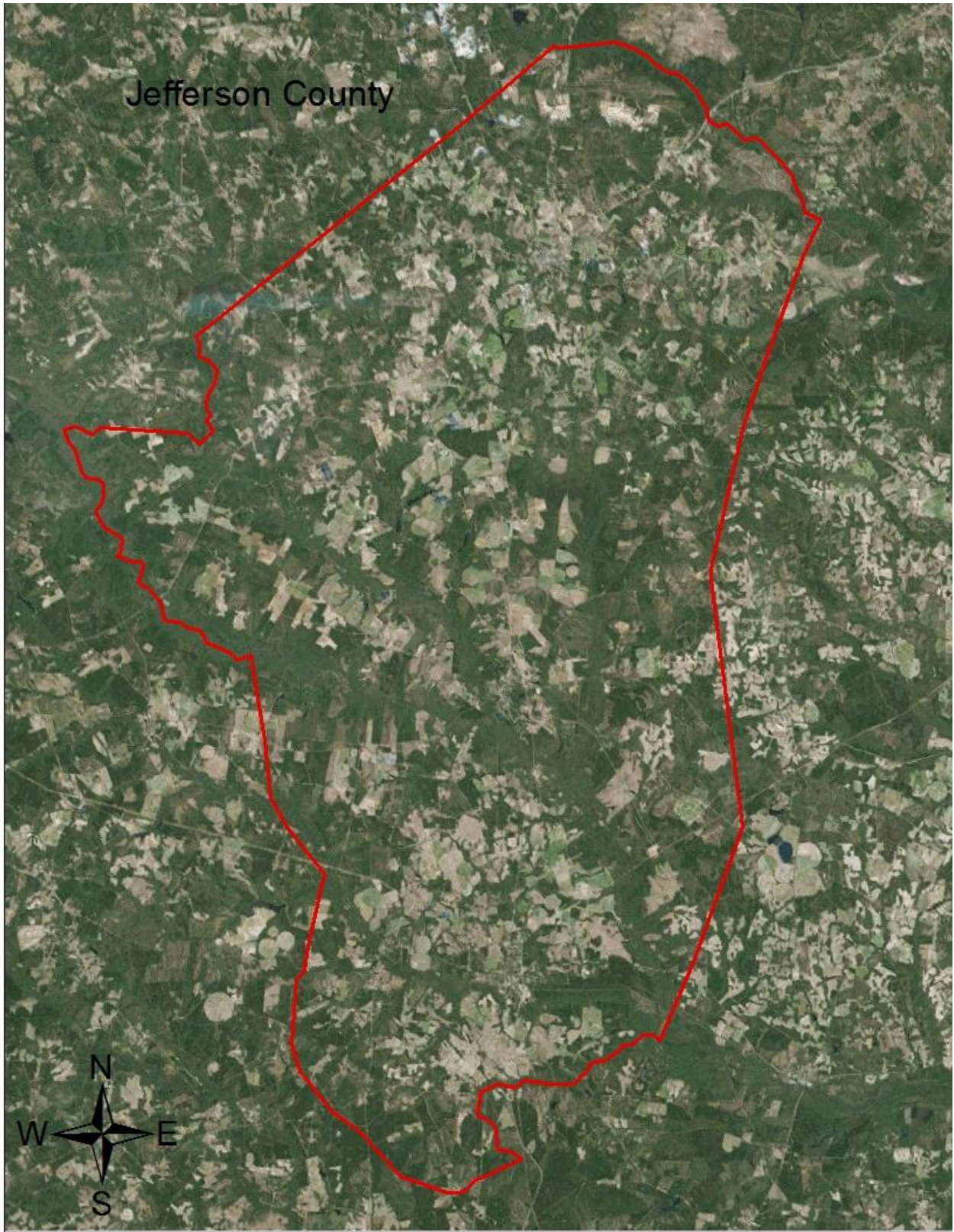
# Fire Occurrence Map for Jefferson County for Fiscal Year 2012-2016



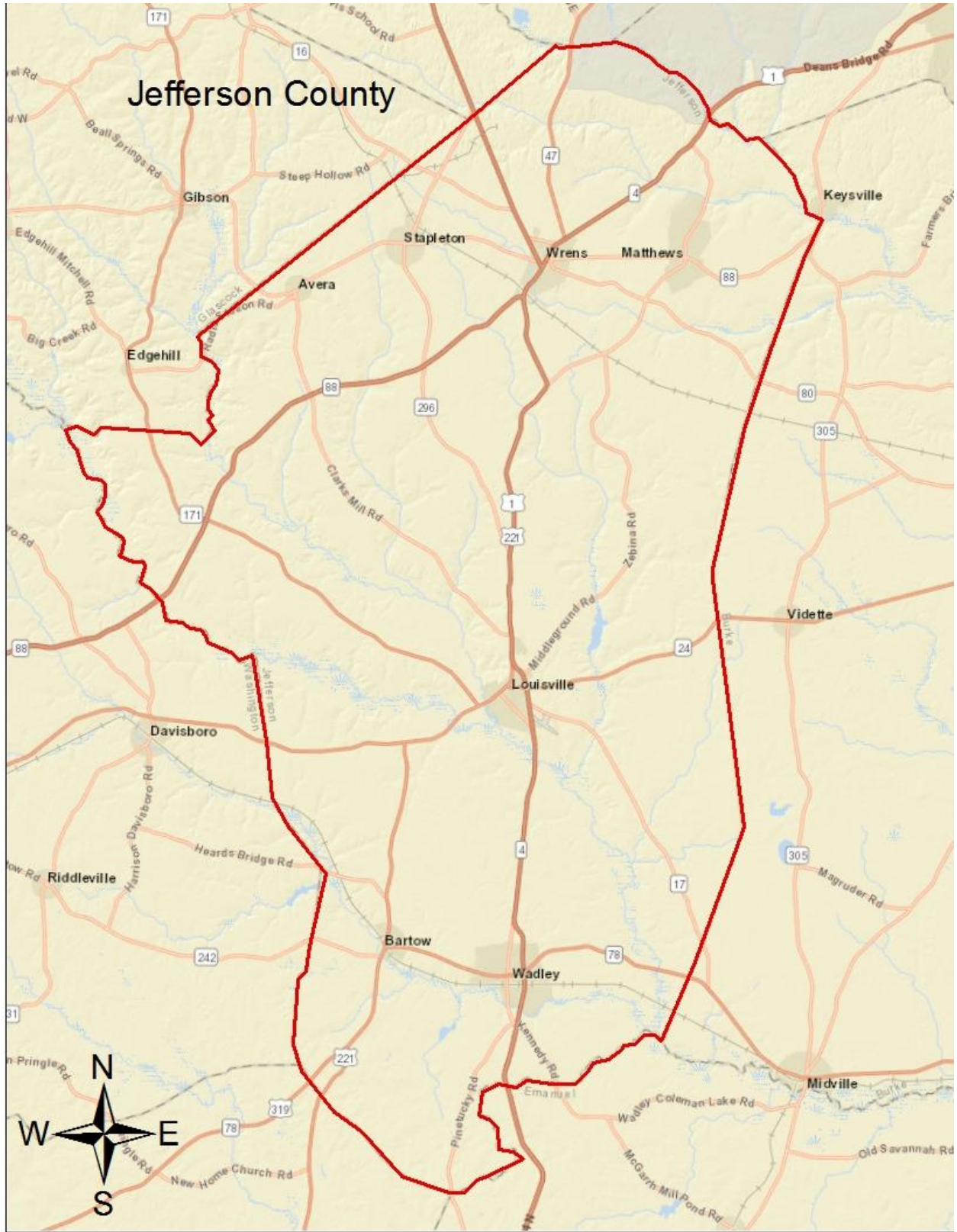
## IV. COUNTY BASE MAPS











## V. COMMUNITY WILDFIRE RISK ASSESSMENT

### The Wildland Urban Interface

There are many definitions of the Wildland-Urban Interface (WUI), however from a fire management perspective it is commonly defined as an area where structures and other human development meet or intermingles with undeveloped wildland or vegetative fuels. As fire is dependent on a certain set of conditions, the National Wildfire Coordinating Group has defined the wildland-urban interface as a set of conditions that exists in or near areas of wildland fuels, regardless of ownership. This set of conditions includes type of vegetation, building construction, accessibility, lot size, topography and other factors such as weather and humidity. When these conditions are present in certain combinations, they make some communities more vulnerable to wildfire damage than others. This “set of conditions” method is perhaps the best way to define wildland-urban interface areas when planning for wildfire prevention, mitigation, and protection activities.

There are three major categories of wildland-urban interface. Depending on the set of conditions present, any of these areas may be at risk from wildfire. A wildfire risk assessment can determine the level of risk.

- 1. “Boundary” wildland-urban interface** is characterized by areas of development where homes, especially new subdivisions, press against public and private wildlands, such as private or commercial forest land or public forests or parks. This is the classic type of wildland-urban interface, with a clearly defined boundary between the suburban fringe and the rural countryside.
- 2. “Intermix” wildland-urban interface** areas are places where improved property and/or structures are scattered and interspersed in wildland areas. These may be isolated rural homes or an area that is just beginning to go through the transition from rural to urban land use.
- 3. “Island” wildland-urban interface**, also called occluded interface, are areas of wildland within predominately urban or suburban areas. As cities or subdivisions grow, islands of undeveloped land may remain, creating remnant forests. Sometimes these remnants exist as parks, or as land that cannot be developed due to site limitations, such as wetlands.

(courtesy *Fire Ecology and Wildfire Mitigation in Florida* 2004)



### **Wildland Urban Interface Hazards**

Firefighters in the wildland urban interface may encounter hazards other than the fire itself, such as hazardous materials, utility lines and poor access.

#### ● Hazardous Materials

- Common chemicals used around the home may be a direct hazard to firefighters from flammability, explosion potential and/or vapors or off-gassing. Such chemicals include paint, varnish and other flammable liquids; fertilizer; pesticides; cleansers; aerosol cans, fireworks, batteries and ammunition. In addition, some common household products such as plastics may give off very toxic fumes when they burn. Stay OUT of the smoke from burning structures and any unknown sources such as trash piles.

#### ● Illicit Activities

- Marijuana plantations or drug production labs may be found in wildland urban interface areas. Extremely hazardous materials such as propane tanks and flammable/toxic chemicals may be encountered, as well as booby traps.

#### ● Propane tanks

- Both large (household size) and small (gas grill size) liquefied propane gas (LPG) tanks can present hazards to firefighters, including explosion. See the "LPG Tank Hazards" discussion for details.



● Utility lines

- Utility lines may be located above and below ground and may be cut or damaged by tools or equipment. Don't spray water on utility lines or boxes.

● Septic tanks and fields

- Below-ground structures may not be readily apparent and may not support the weight of engines or other apparatus.

● New construction materials

- Many new construction materials have comparatively low melting points and may "off-gas" extremely hazardous vapors. Plastic decking materials that resemble wood are becoming more common and may begin softening and losing structural strength at 180° F, though they normally do not sustain combustion once direct flame is removed. However, if they continue to burn they exhibit the characteristics of flammable liquids.

● Pets and livestock

- Pets and livestock may be left when residents evacuate and will likely be highly stressed, making them more inclined to bite and kick. Firefighters should not put themselves at risk to rescue pets or livestock.

● Evacuation occurring

- Firefighters may be taking structural protection actions while evacuations of residents are occurring. Be very cautious of people driving erratically. Distraught residents may refuse to leave their property, and firefighters may need to disengage from fighting fire to contact law enforcement officers for assistance. In most jurisdictions firefighters do not have the authority to force evacuations. Firefighters should not put themselves at risk trying to protect someone who will not evacuate!

● Limited access

- Narrow one-lane roads with no turn-around room, inadequate or poorly maintained bridges and culverts are frequently found in wildland urban interface areas. Access should be sized-up and an evacuation plan for all emergency personnel should be developed.

The wildland fire risk assessments conducted in 2011 by the Jefferson County Fire Department and the Georgia Forestry Commission returned an average score of 112, placing Jefferson County in the “very high risk” hazard range. The risk assessment instrument used to evaluate wildfire hazards to Jefferson County’s WUI was the Hazard and Wildfire Risk Assessment Checklist. The instrument takes into consideration accessibility, vegetation (based on fuel models), roofing assembly, building construction, and availability of fire protection resources, placement of gas and electric utilities, and additional rating factors. The following factors contributed to the wildfire hazard score for Jefferson County:

- Dead end roads with inadequate turn arounds
- Narrow roads without drivable shoulders
- Long, narrow, and poorly labeled driveways
- Limited street signs and homes not clearly addressed
- Thick, highly flammable vegetation surrounding many homes
- Minimal defensible space around structures
- Homes with wooden siding and roofs with heavy accumulations of vegetative debris
- No pressurized or non-pressurized water systems available
- Above ground utilities
- Large, adjacent areas of forest or wildlands
- Heavy fuel buildups in adjacent wildlands
- Undeveloped lots comprising half the total lots in many rural communities
- High occurrence of wildfires in the several locations
- Distance from fire stations
- Lack of homeowner or community organizations

The Communities-at-Risk within Jefferson County that led to its **Very High Hazard (107)** risk rating are:

<b>Community</b>	<b>Score</b>	<b>Hazard Rating</b>
<b>Ogeechee Heights</b>	<b>114</b>	<b>Very High</b>
<b>Taylor Lane</b>	<b>54</b>	<b>Moderate</b>
<b>Golf Drive</b>	<b>105</b>	<b>Very High</b>
<b>Berrien Branch</b>	<b>71</b>	<b>Moderate</b>
<b>Casson Creek Subdivision</b>	<b>120</b>	<b>Very High</b>
<b>Oak Hill Subdivision</b>	<b>101</b>	<b>Very High</b>
<b>Stellaville Community</b>	<b>128</b>	<b>Extreme</b>
<b>Mathews Community</b>	<b>105</b>	<b>Very High</b>
<b>Red McDonald Community</b>	<b>156</b>	<b>Extreme</b>
<b>Sitadey Oaks Community</b>	<b>147</b>	<b>Extreme</b>
<b>Gus Perdue Community</b>	<b>116</b>	<b>Very High</b>
<b>Country Club Circle</b>	<b>74</b>	<b>Moderate</b>
<b>Kelly Quarter</b>	<b>142</b>	<b>Extreme</b>
<b>Whitley Community</b>	<b>115</b>	<b>Very High</b>
<b>Deerwood Circle</b>	<b>110</b>	<b>Very High</b>
<b>Sylvan Grove</b>	<b>93</b>	<b>High</b>
<b>Brown Terrace</b>	<b>78</b>	<b>High</b>
<b>Jefferson County Average</b>	<b>107</b>	<b>Very High Hazard</b>

These hazard ratings were completed by the Georgia Forestry Commission’s local office and Community Wildfire Protection Specialist during the month of October. The Georgia Forestry Commission Hazard and Wildfire Risk Assessment Score Sheets were used. This document evaluates communities (groups of homes) based upon six criteria: community access, surrounding vegetation, building construction, fire protection, utilities and additional rating factors. The cumulative wildfire hazard rating scores range from a low rating of 0 to 50 points to an extreme hazard rating with over 120 points. The cumulative wildfire hazard rating scores help establish priorities for mitigation activities in the CWPP Action Plan. Those various mitigation recommendations are provided below the action plan created for Jefferson County.

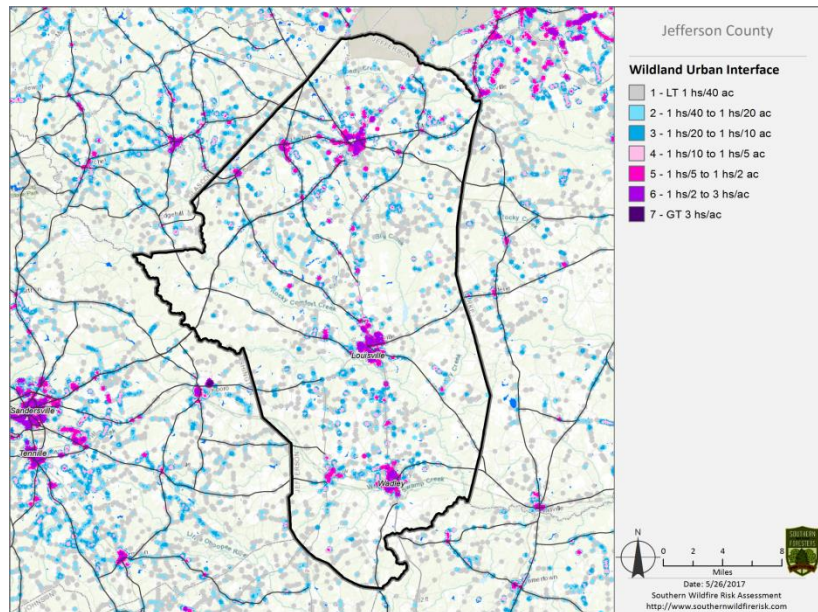


**Prescribed burning of woodlands is the best management practice to reduce hazardous fuel accumulation. The Georgia Forestry Commission can provide a prescribed burning plan, establish fire breaks, and can also provide equipment standby and assist with burning when personnel are available.**

## VI. SOUTHERN WILDFIRE RISK ASSESSMENT & HAZARD MAPS

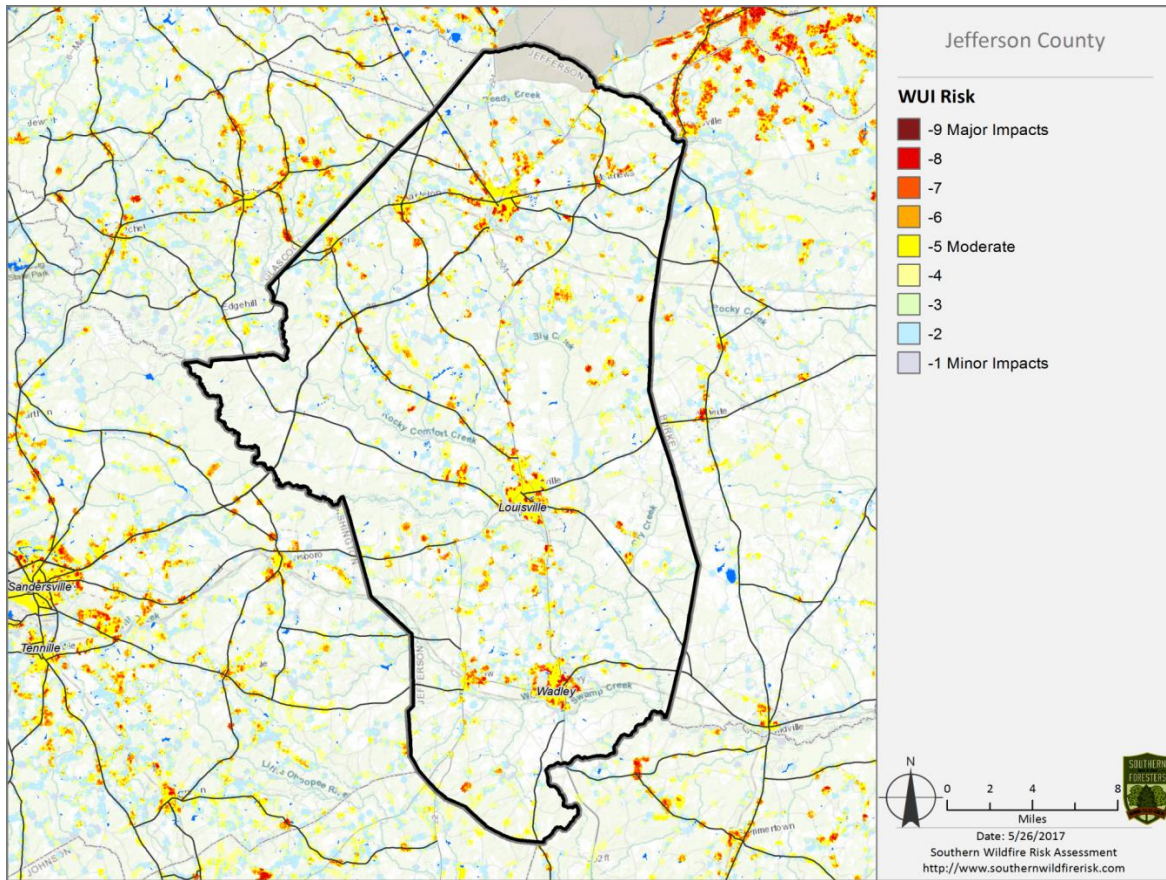
The Southern Wildfire Risk Assessment tool, developed by the Southern Group of State Foresters, was released to the public in July 2014. This tool allows users of the Professional Viewer application of the Southern Wildfire Risk Assessment (SWRA) web Portal (SouthWRAP) to define a specific project area and summarize wildfire related information for this area. A detailed risk summary report is generated using a set of predefined map products developed by the Southern Wildfire Risk Assessment project which have been summarized explicitly for the user defined project area. A risk assessment summary was generated for Jefferson County. The SouthWRAP (SWRA) products included in this report are designed to provide the information needed to support the following key priorities:

- Identify areas that are most prone to wildfire
- Identify areas that may require additional tactical planning, specifically related to mitigation projects and Community Wildfire Protection Planning
- Provide the information necessary to justify resource, budget and funding requests
- Allow agencies to work together to better define priorities and improve emergency response, particularly across jurisdictional boundaries
- Define wildland communities and identify the risk to those communities
- Increase communication and outreach with local residents and the public to create awareness and address community priorities and needs
- Plan for response and suppression resource needs
- Plan and prioritize hazardous fuel treatment programs

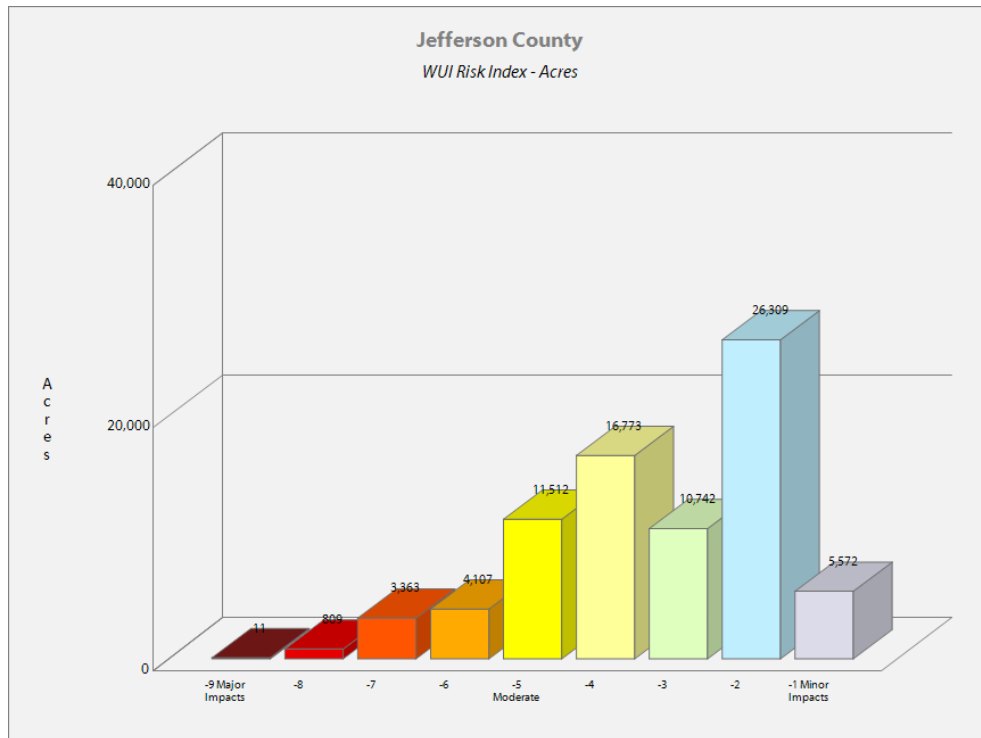


**Wildland Urban Interface (WUI) map from the Jefferson County SWRA.**

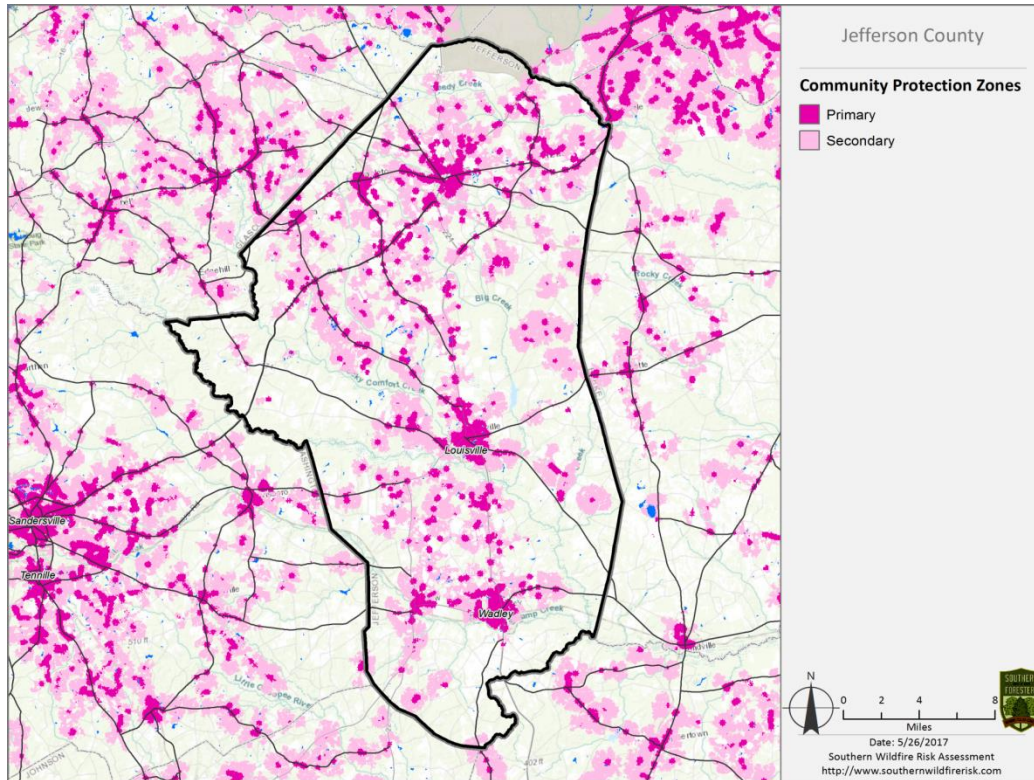




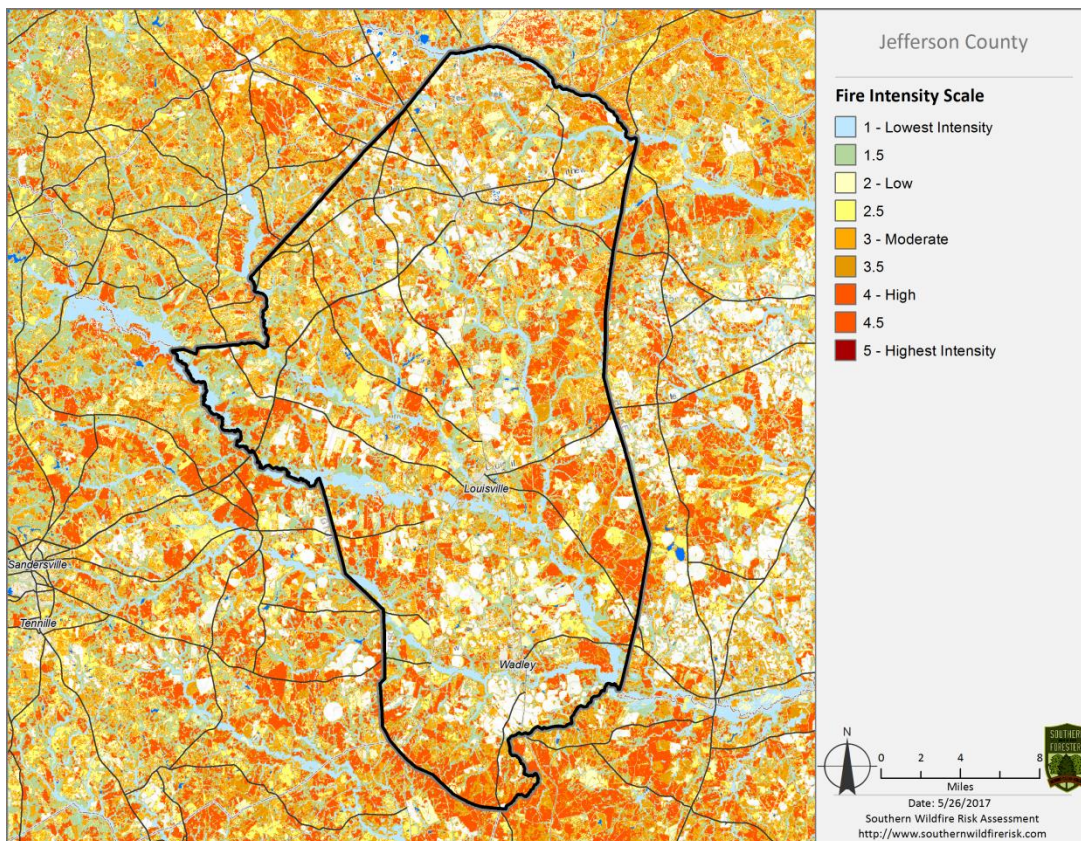
**Wildland Urban Interface (WUI) Risk map (above) and WUI acres graph (below)**







Community Protection Zone map (above) and Fire Intensity Scale map (below)



## VII. PRIORITIZED MITIGATION RECOMMENDATIONS

### Executive Summary

As Central Georgia continues to see increased growth from other areas seeking less crowded and warmer climates, new development will occur more frequently on forest and wildland areas. The County will have an opportunity to significantly influence the wildland fire safety of new developments. It is important that new development be planned and constructed to provide for public safety in the event of a wildland fire emergency.

Over the past 20 years, much has been learned about how and why homes burn during wildland fire emergencies. Perhaps most importantly, case histories and research have shown that even in the most severe circumstances, wildland fire disasters can be avoided. Homes can be designed, built and maintained to withstand a wildfire even in the absence of fire services on the scene. The national Firewise Communities program is a national awareness initiative to help people understand that they don't have to be victims in a wildfire emergency. The National Fire Protection Association has produced two standards for reference: NFPA 1144 Standard for Reducing Structure Ignition Hazards from Wildland Fire. 2008 Edition and NFPA 1141 Standard for Fire Protection Infrastructure for Land Development in Suburban and Rural Areas.

When new developments are built in the Wildland/Urban Interface, a number of public safety challenges may be created for the local fire services: (1) the water supply in the immediate areas may be inadequate for fire suppression; (2) if the Development is in an outlying area, there may be a longer response time for emergency services; (3) in a wildfire emergency, the access road(s) may need to simultaneously support evacuation of residents and the arrival of emergency vehicles; and (4) when wildland fire disasters strike, many structures may be involved simultaneously, quickly exceeding the capability of even the best equipped fire departments.

The following recommendations were developed by the Jefferson County CWPP Core team as a result of surveying and assessing fuels and structures and by conducting meetings and interviews with county and city officials. A priority order was determined based on which mitigation projects would best reduce the hazard of wildfire in the assessment area.

### Proposed Community Hazard and Structural Ignitability Reduction Priorities

Primary Protection for Community and Its Essential Infrastructure		
Treatment Area	Treatment Types	Treatment Method(s)
1. All Structures	Create minimum of 30-foot of defensible space**	Trim shrubs and vines to 30 feet from structures, trim overhanging limbs, replace flammable plants near homes with less flammable varieties, remove vegetation around chimneys.

2. Applicable Structures	Reduce structural ignitability**	Clean flammable vegetative material from roofs and gutters, store firewood appropriately, install skirting around raised structures, store water hoses for ready access, and replace pine straw and mulch around plantings with less flammable landscaping materials.
3. Community Clean-up Day	Cutting, mowing, pruning**	Cut, prune, and mow vegetation in shared community spaces.
4. Driveway Access	Culvert installation	See that adequate lengths of culverts are installed to allow emergency vehicle access.
5. Road Access	Identify needed road improvements	As roads are upgraded, widen to minimum standards with at least 50 foot diameter cul de sacs or turn arounds.

**Proposed Community Wildland Fuel Reduction Priorities**

Treatment Area	Treatment Types	Treatment Method(s)
1. Adjacent WUI Lands	Reduce hazardous fuels	Encourage prescribed burning for private landowners and industrial timberlands particularly adjacent to residential areas.  County resolution to state recommending that the Ga Forestry Commission not charge for prescribed burning in WUI areas.  Seek grant for WUI mitigation team.
2. Railroad Corridors	Reduce hazardous fuels	Encourage railroads to better maintain their ROW eliminating brush and grass through herbicide and mowing. Maintain firebreaks along ROW adjacent to residential areas.
3. Existing Fire Lines	Reduce hazardous fuels	Clean and re-harrow existing lines.



<b>Proposed Improved Community Wildland Fire Response Priorities</b>		
1. Water Sources	Dry Hydrants	Inspect, maintain and improve access to existing dry hydrants. Add signage along road to mark the hydrants. Locate additional dry hydrants as needed.
2. Fire Stations	Equipment	Wildland hand tools. Lightweight Wildland PPE Gear. Investigate need for “brush” trucks near communities at risk.
3. Water Sources	Drafting equipment	Investigate need for additional drafting pumps.
4. Personnel	Training	Obtain Wildland Fire Suppression training for fire personnel to include S130, S190, and S215.
**Actions to be taken by homeowners and community stakeholders		

### **Proposed Education and Outreach Priorities**

1. Conduct “How to Have a Firewise Home” Workshop for County Residents
<p>Set up and conduct a workshop for homeowners that teach the principles of making homes and properties safe from wildfire. Topics for discussion include defensible space, landscaping, building construction, etc. Workshop will be scheduled for evenings or weekends when most homeowners are available and advertised through local media outlets.</p> <p>Distribute materials promoting Firewise practices and planning through local community and governmental meetings.</p>
2. Conduct “Firewise” Workshop for Community Leaders
<p>Arrange for GFC Firewise Coordinator to work with local community leaders and governmental officials on the importance of “Firewise Planning” in developing ordinances and codes as the county as the need arises. Identified “communities-at-risk” including: Kelly Quarter, Mathews Community Stellaville, and Ogeechee Heights should be sought after for inclusion in the National Firewise Communities Program.</p>

### 3. Spring Clean-up Event

Conduct clean-up event every spring involving the Georgia Forestry Commission, Jefferson County Fire Departments, Cities of Wrens, Louisville, Wadley and local residents of rural Jefferson County. National Wildfire Preparedness Day is held annually on the 1<sup>st</sup> Saturday in May, which is an excellent time to hold such an event. Set up information table with educational materials and refreshments. Initiate the event with a morning briefing by GFC Firewise coordinator and local fire officials detailing plans for the day and safety precautions. Activities to include the following:

- Clean flammable vegetative material from roofs and gutters
- Trim shrubs and vines to 30 feet away from structures
- Trim overhanging limbs and remove ladder fuels
- Clean hazardous or flammable debris from adjacent properties

### 4. Informational Packets

Develop and distribute informational packets to be distributed by realtors and insurance agents. Included in the packets are the following:

- Be Firewise Around Your Home
- Firewise Guide to Landscape and Construction
- Firewise Communities USA materials
- Fire Adapted Community
- Ready Set Go information

### 5. Wildfire Protection Display

Create and exhibit a display for the general public at the local events. Display can be independent or combined with the Georgia Forestry Commission display.

### 6. Press

Invite the local and regional news media to community “Firewise” functions for news coverage and regularly submit press releases documenting wildfire risk improvements in Jefferson County.

## VIII. ACTION PLAN

### Roles and Responsibilities

The following roles and responsibilities have been developed to implement the action plan:

Role	Responsibility
Hazardous Fuels and Structural Ignitability Reduction	
Jefferson County WUI Fire Council	Create this informal team or council comprised of residents, GFC officials, County Fire department officials, a representative from the city and county government and the EMA Director for Jefferson County. Meet periodically to review progress towards mitigation goals, appoint and delegate special activities, work with federal, state, and local officials to assess progress and develop future goals and action plans. Work with residents to implement projects and Firewise activities.
Key Messages to focus on	<ol style="list-style-type: none"> <li>1 Defensible Space and Firewise Landscaping</li> <li>2 Debris Burning Safety</li> <li>3 Firewise information for homeowners</li> <li>4 Prescribed burning benefits</li> </ol>
Communications objectives	<ol style="list-style-type: none"> <li>1 Create public awareness for fire danger and defensible space issues</li> <li>2 Identify most significant human cause fire issues</li> <li>3 Enlist public support to help prevent these causes</li> <li>4 Encourage citizens to employ fire prevention and defensible spaces in their communities.</li> </ol>
Target Audiences	<ol style="list-style-type: none"> <li>1 Homeowners</li> <li>2 Forest Landowners and users</li> <li>3 Civic Groups</li> <li>4 School Groups</li> </ol>
Methods	<ol style="list-style-type: none"> <li>1 News Releases</li> <li>2 Personal Contacts</li> <li>3 Key messages and prevention tips</li> <li>4 Visuals such as signs, brochures and posters</li> <li>5 Social media</li> </ol>

Spring Clean-up Day	
Event Coordinator	Coordinate day's events and schedule, catering for cookout, guest attendance, and moderate activities the day of the day of the event.
Event Treasurer	Collect funds from residents to cover food, equipment rentals, and supplies.
Publicity Coordinator	Advertise event through neighborhood newsletter, letters to officials, and public service announcements (PSAs) for local media outlets. Publicize post-event through local paper and radio PSAs.
Work Supervisor	Develop volunteer labor force of community residents; develop labor/advisory force from Georgia Forestry Commission, Jefferson County Fire Departments, and Emergency Management Agency. Procure needed equipment and supplies. In cooperation with local city and county officials, develop safety protocol. Supervise work and monitor activities for safety the day of the event.

### Funding Needs

The following funding is needed to implement the action plan:

Project	Estimated Cost	Potential Funding Source(s)
1. Create a minimum of 30 feet of defensible space around structures	Varies	Residents will supply labor and fund required work on their own properties.
2. Reduce structural ignitability by cleaning flammable vegetation from roofs and gutters; appropriately storing firewood, installing skirting around raised structures, storing water hoses for ready access, replacing pine needles and mulch around plantings with less flammable material.	Varies	Residents will supply labor and fund required work on their own properties.
3. Amend codes and ordinances to provide better driveway access, increased visibility of house numbers, properly stored firewood, minimum defensible space brush clearance, required Class A roofing materials and skirting around raised structures, planned maintenance of community lots.	No Cost	To be adopted by city and county government.
4. Spring Cleanup Day	Varies	Community Business Donations.
5. Fuel Reduction Activities	\$15 / acre	FEMA & USFS Grants

### **Assessment Strategy**

To accurately assess progress and effectiveness for the action plan, the Jefferson County WUI Fire Council will implement the following:

- Annual wildfire risk assessment will be conducted to re-assess wildfire hazards and prioritize needed actions.
- Mitigation efforts that are recurring (such as mowing, burning, and clearing of defensible space) will be incorporated into an annual renewal of the original action plan.
- Mitigation efforts that could not be funded in the requested year will be incorporated into the annual renewal of the original action plan.
- Continuing educational and outreach programs will be conducted and assessed for effectiveness. Workshops will be evaluated based on attendance and post surveys that are distributed by mail 1 month and 6 months following workshop date.
- The Jefferson County WUI Council will publish an annual report detailing mitigation projects initiated and completed, progress for ongoing actions, funds received, funds spent, and in-kind services utilized. The report will include a “state of the community” section that critically evaluates mitigation progress and identifies areas for improvement. Recommendations will be incorporated into the annual renewal of the action plan.
- An annual survey will be distributed to residents soliciting information on individual mitigation efforts on their own property (e.g., defensible space). Responses will be tallied and reviewed at the next Jefferson County WUI Council meeting. Needed actions will be discussed and delegated.

This plan should become a working document that is shared by local, state, and federal agencies that will use it to accomplish common goals. An agreed-upon schedule for meeting to review accomplishments, solve problems, and plan for the future should extend beyond the scope of this plan. Without this follow up this plan will have limited value

## **IX. GRANT FUNDING & MITIGATION ASSISTANCE**

Community Protection Grant: US Forest Service sponsored prescribed fire program. Communities with “at-risk” properties that lie within ten miles of a National Forest, National Park Service or Bureau of Land Management tracts may apply with the Georgia Forestry Commission to have their land prescribe burned free-of-charge. Forest mastication, where it is practical with Georgia Forestry Commission equipment, is also available under this grant program.

FEMA Mitigation Policy MRR-2-08-01: through GEMA – Hazard Mitigation Grant Program (HMGP) and Pre-Disaster Mitigation Program (PDM).

1. To provide technical and financial assistance to local governments to assist in the implementation of long term, cost effective hazard mitigation accomplishments.
2. This policy addresses wildfire mitigation for the purpose of reducing the threat to all-risk structures through creating defensible space, structural protection through the application of ignition resistant construction and limited hazardous fuel reduction to protect life and property.
3. With a completed registered plan (addendum to the State Plan) counties can apply for pre-mitigation funding. They will also be eligible for HMGP funding if the county is declared under a wildfire disaster.

Georgia Forestry Commission: Plowing and prescribed burning assistance, as well as forest mastication, can be obtained from the GFC as a low-cost option for mitigation efforts.

The Georgia Forestry Commission Firewise Community Mitigation Assistance Grants – Nationally recognized Firewise Communities can receive up to \$5000 grants to help address potential wildfire risk reduction projects. Grant submission can be made through local Georgia Forestry Commission offices or your Regional Wildfire Prevention Specialist.

The International Association of Fire Chiefs (IAFC) and American International Group, Inc. (AIG) offer grants to assist local fire departments in establishing or enhancing their community fuels mitigation programs while educating members of the community about community wildfire readiness and encouraging personal action.

## **X. GLOSSARY**

*Community-At-Risk – A group of two or more structures whose proximity to forested or wildland areas places homes and residents at some degree of risk.*

*Critical Facilities – Buildings, structures or other parts of the community infrastructure that require special protection from an approaching wildfire.*

*CWPP – The Community Wildfire Protection Plan.*

*Defensible Space – The immediate landscaped area around a structure (usually a minimum of 30 ft.) kept “lean, clean and green” to prevent an approaching wildfire from igniting the structure.*

*Dry Hydrant - A non-pressurized pipe system permanently installed in existing lakes, ponds and streams that provides a suction supply of water to a fire department tank truck.*

*FEMA – The Federal Emergency Management Agency whose mission is to support our citizens and first responders to ensure that as a nation we work together to build, sustain, and improve our capability to prepare for, protect against, respond to, recover from, and mitigate all hazards.*

*Fire Adapted Community – A community fully prepared for its wildfire risk by taking actions to address safety, homes, neighborhoods, businesses and infrastructure, forest, parks, open spaces, and other community assets.*

*Firewise Program – A national initiative with a purpose to reduce structural losses from wildland fires.*

*Firewise Community/USA – A national recognition program for communities that take action to protect themselves from wildland fire. To qualify a community must have a wildfire risk assessment by the Georgia Forestry Commission, develop a mitigation action plan, have an annual firewise mitigation/education event, have dedicated firewise leadership, and complete the certification application.*

*Fuels – All combustible materials within the wildland/urban interface or intermix including, but not limited to, vegetation and structures.*

*Fuel Modification – Any manipulation or removal of fuels to reduce the likelihood of ignition or the resistance to fire control.*

*Hazard & Wildfire Risk Assessment – An evaluation to determine an area’s (community’s) potential to be impacted by an approaching wildland fire.*

*Healthy Forests Initiative - Launched in August 2002 by President Bush (following passage of the Healthy Forests Restoration Act by Congress) with the intent to reduce the risks severe wildfires pose to people, communities, and the environment.*

Home Ignition Zone (Structure Ignition Zone) - *Treatment area for wildfire protection. The “zone” includes the structure(s) and their immediate surroundings from 0-200 ft.*

Mitigation – *An action that moderates the severity of a fire hazard or risk.*

National Fire Plan – *National initiative, passed by Congress in the year 2000, following a landmark wildland fire season, with the intent of actively responding to severe wildland fires and their impacts to communities while ensuring sufficient firefighting capacity for the future.*

National Fire Protection Association (NFPA) - *An international nonprofit organization established in 1896, whose mission is to reduce the worldwide burden of fire and other hazards on the quality of life by providing and advocating consensus codes and standards, research, training, and education.*

National Wildfire Preparedness Day – *Started in 2014 by the National Fire Protection Association as a day for communities to work together to prepare for the fire season. It is held annually on the first Saturday in May.*

Prescribed Burning (prescribed fire) –*The use of planned fire that is deliberately set under specific fuel and weather condition to accomplish a variety of management objectives and is under control until it burns out or is extinguished.*

Ready, Set, Go - *A program fire services use to help homeowners understand wildfire preparedness, awareness, and planning procedures for evacuation.*

Southern Group of State Foresters – *Organization whose members are the agency heads of the forestry agencies of the 13 southern states, Puerto Rico and the Virgin Islands.*

Stakeholders– *Individuals, groups, organizations, businesses or others who have an interest in wildland fire protection and may wish to review and/or contribute to the CWPP content.*

Wildfire or Wildland Fire – *An unplanned and uncontrolled fire spreading through vegetative fuels.*

Wildland/Urban Interface - *The presence of structures in locations in which the authority having jurisdiction (AHJ) determines that topographical features, vegetation, fuel types, local weather conditions and prevailing winds result in the potential for ignition of the structures within the area from flames and firebrands from a wildland fire (NFPA 1144, 2008 edition.*



## **XI. SOURCES OF INFORMATION**

Publications/Brochures/Websites:

- FIREWISE materials can be ordered at [www.firewise.org](http://www.firewise.org)
- Georgia Forestry Commission [www.georgiafirewise.org](http://www.georgiafirewise.org)
- Examples of successful wildfire mitigation programs can be viewed at the website for National Database of State and Local wildfire Hazard Mitigation Programs sponsored by the U.S. Forest Service and the Southern Group of State Foresters [www.wildfireprograms.com](http://www.wildfireprograms.com)
- Information about a variety of interface issues (including wildfire) can be found at the USFS website for Interface South: [www.interfacesouth.org](http://www.interfacesouth.org)
- Information on codes and standards for emergency services including wildfire can be found at [www.nfpa.org](http://www.nfpa.org)
- Information on FEMA Assistance to Firefighters Grants (AFG) can be found at [www.firegrantsupport.com](http://www.firegrantsupport.com)
- Information on National Fire Plan grants can be found at <http://www.federalgrantswire.com/national-fire-plan--rural-fire-assistance.html>
- Southern Wildfire Risk Assessment website SouthWRAP [www.SouthernWildfireRisk.com](http://www.SouthernWildfireRisk.com)
- Fire Adapted Communities [www.fireadapted.org](http://www.fireadapted.org)
- Ready, Set, Go [www.wildlandfirersg.org](http://www.wildlandfirersg.org)
- National Wildfire Preparedness Day [www.wildfireprepdays.org](http://www.wildfireprepdays.org)

### **Appended Documents:**

Jefferson County Southern Wildfire Risk Assessment Summary Report (SWRA)

All files that make up this plan are available in an electronic format from the Georgia Forestry Commission.



**Georgia Forestry Commission**  
5645 Riggins Mill Rd.  
Dry Branch, GA 31020

**800-GA-TREES**  
**GaTrees.org**

*The Georgia Forestry Commission provides leadership, service, and education in the protection and conservation of Georgia's forest resources.*

*An Equal Opportunity Employer and Service Provider*