

GEORGIA FORESTRY  
COMMISSION



# Community Wildfire Protection Plan

## *An Action Plan for Wildfire Mitigation and Conservation of Natural Resources*

### Johnson County, Georgia

A Program of the Georgia Forestry Commission  
with support from the U.S. Forest Service



FEBRUARY 2019

Prepared by;  
Jason Reese, Chief Ranger, Johnson County  
Will Fell, CWPP Specialist (Initial plan 2010)  
Beryl Budd, Wildfire Prevention Specialist (Revised plan 2019)

Georgia Forestry Commission  
7781 GA Hwy 15  
Wrightsville, GA 31096

The following report is a collaborative effort among various entities; the representatives listed below comprise the core decision-making team responsible for this report and mutually agree on the plan's contents:

William Lindsey  
County Administrator  
Johnson County  
(478) 864-3388  
[wlindsey@johnsonco.org](mailto:wlindsey@johnsonco.org)

Stan Garnto  
Chief  
Wrightsville Fire Department  
(478) 864-4217  
[fc-johnsp@dcor.state.ga.us](mailto:fc-johnsp@dcor.state.ga.us)

Shawn Wombles  
Fire Coordinator/EMA Director  
Johnson County  
(478) 864-4152  
[swombles@bellsouth.net](mailto:swombles@bellsouth.net)

Jason Reese  
Chief Ranger  
Johnson County Forestry Unit  
(478) 864-4203  
[jreese@gfc.state.ga.us](mailto:jreese@gfc.state.ga.us)

# PLAN CONTENTS

I. Objectives .....	4
II. Community Collaboration.....	4
III. Community & Wildfire History.....	5
IV. Community Base Maps .....	14
V. Community Wildfire Risk Assessment.....	17
VI. Southern Wildfire Risk Assessment & Risk Hazard Maps.....	19
VII. Prioritized Mitigation Recommendations.....	25
VIII. Action Plan.....	30
IX. Mitigation Assistance & Grant Information.....	33
X. Glossary.....	34
XI. Sources of Information.....	36

## Appended Documents:

Johnson County Southern Wildfire Risk Assessment Summary Report

Johnson County Wildfire Pre-suppression Plan

NFPA 1141 Standard for Fire Protection Infrastructure for Land Development in Suburban and Rural Areas.

## I. OBJECTIVES

The mission of the following report is to set clear priorities for the implementation of wildfire mitigation in Johnson County. The plan includes prioritized recommendations for the appropriate types and methods of fuel reduction and structure ignitability reduction that will protect this community and its essential infrastructure. It also includes a plan for wildfire suppression. Specifically, the plan includes community-centered actions that will:

- Educate citizens on wildfire, its risks, and ways to protect lives and properties,
- Support fire rescue and suppression entities,
- Focus on collaborative decision-making and citizen participation,
- Develop and implement effective mitigation strategies, and
- Develop and implement effective community ordinances and codes.

## II. COMMUNITY COLLABORATION

The core team convened on April 29<sup>th</sup>, 2009 to assess risks and develop the Community Wildfire Protection Plan. The group is comprised of representatives from local government, local fire authorities, and the state agency responsible for forest management. Below are the groups included in the task force:

Johnson County Government

*County Volunteer Fire Departments*

*Emergency Management*

*Board of County Commissioners*

City of Wrightsville

*Wrightsville Fire Department,*

Georgia Department of Corrections

*Johnson State Prison Fire Department*

Georgia Forestry Commission

It was decided to conduct community assessments on the basis of the individual fire districts in the county. The core committee in the county assessed their districts and reconvened on November 9<sup>th</sup>, 2009 for the purpose of completing the following:

Risk Assessment	Assessed wildfire hazard risks and prioritized mitigation actions.
Fuels Reduction	Identified strategies for coordinating fuels treatment projects.
Structure Ignitability	Identified strategies for reducing the ignitability of structures within the Wildland interface.
Emergency Management	Forged relationships among local government and fire districts and developed/refined a pre-suppression plan.
Education and Outreach	Developed strategies for increasing citizen awareness and action and to conduct homeowner and community leader workshops.

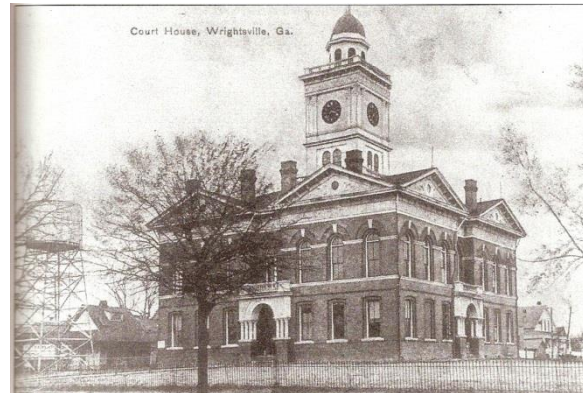
### III. COMMUNITY BACKGROUND AND EXISTING SITUATION



Johnson County, in east central Georgia, is the state's 130th county and encompasses 304 square miles. It was created by the state legislature in 1858 from Emanuel, Laurens, and Washington counties and named after Herschel Johnson, the governor of Georgia between 1853 and 1857.

Johnson was Democrat Stephen Douglas's 1860 vice-presidential candidate, chosen for his anti-secessionist stance. He served as a judge from 1873 to 1880 and is the only judge in Georgia history to sit on the bench in the superior court of a county named for him.

The county seat is Wrightsville, laid out on land donated by William Hicks in 1859 and incorporated in 1866. It was named for John B. Wright, a member of the committee that determined the town site. He later became a state legislator. The first courthouse, described as a wooden structure, was built soon after the county was formed. The population of Wrightsville grew rapidly in the 1890s, requiring a new courthouse. It was built in 1895 and still fills its original function. Renovated in 1938 as a Works Progress Administration project, and again in 1996, it was placed on the National Register of Historic Places in 1980.



Kite, incorporated in 1891, is located on the eastern side of the county. Kite was named after Shaderick Kight, who donated the land for the town and requested the simplified spelling of his name, which he hoped would expedite mail service. Other towns include Adrian, Donovan, Meeks, and Scott. The county line zigzags through Adrian, placing part of the town in Emanuel County. This came about because of a family feud that occurred in the late nineteenth century. Adrian was settled in the 1890s. Meeks, settled in the late 1880s, was named for Henry Meeks, a prominent Primitive Baptist minister who possessed a large tract of land in the vicinity. Scott, incorporated for most of the nineteenth century, is on the line near Laurens County. The origin of its name is unknown.

Wrightsville is located on a Georgia Civil War Heritage Trail, commemorating its place in the history of that conflict. Union general William T. Sherman's march to the sea came through Johnson County.

In 1888 the Methodist Episcopal Church established the Nannie Lou Warthen Institute, a district high school in Wrightsville. Three years later the school received a charter recognizing it as a college, and in the early 1900s its name was changed to Warthen College. Eventually it closed, but today local students may acquire post-high school education at the local campus of

Southeastern Technical College, which maintains a center for adult education in Wrightsville. Football player Herschel Walker, who was born in Wrightsville and graduated from Johnson County High School in 1980, won the Heisman Trophy in 1982 while playing for the University of Georgia team. Walker went on to become an award-winning professional football player.

The Wrightsville and Tennille Railroad built the Wrightsville Depot in 1900. The building now functions as a community center and houses the Wrightsville–Johnson County Chamber of Commerce and the Johnson County Development Authority.

The Grice Inn, once a boarding house for students from Warthen College, is now the headquarters of the Johnson County Historical Society. Historic artifacts and papers are housed there as well. It was placed on the National Register of Historic Places in 1978. The Kite Museum, Kite's historical museum, is housed in a former Masonic lodge built in 1890.

According to the 2000 U.S. census, the population of Johnson County was 8,560 (62.4 percent white, 37 percent black, and 0.9 percent Hispanic), an increase of 2.8 percent since 1990.

(Courtesy Elizabeth B Cooksey *New Georgia Encyclopedia*)



**Wildland Urban Interface (WUI) is described as the area where structures and other human improvements meet and intermingle with undeveloped wildland or vegetative fuels.**

## Wildfire History

Johnson County located in the Georgia Coastal Plain despite a significant agricultural presence is still 79% forested. With the exception of a few scattered large blocks of woodlands there are homes and communities scattered throughout the county. The risks and hazards from the wildland urban interface are fairly general and substantial throughout the county even on the edges of the three incorporated towns of Wrightsville, Adrian and Kite.

Johnson County is protected by organized fire departments within the city of Wrightsville and nine widely spaced volunteer fire departments in the remainder of the county, Kite, Meeks, Raines Crossroads, Buckeye, Minters Chapel, Scott, Moores Chapel, New Home and Piney Mount. The Georgia Forestry Commission maintains a county protection unit located about two miles south of Wrightsville on Hwy 15 to respond to wildfires throughout the county. The cities of Wrightsville, Adrian and Kite and the adjacent areas of the county are serviced by a pressurized water system with well placed hydrants throughout.

Over the past 47 years, Johnson County has averaged 56 reported wildland fires per year. These fires have burned an average of 265 acres annually. The occurrence of these fires show a pronounced peak in the months from February and March, with these two months accounting for 36% of the fires and 57% of the acres burned. Using more recent data over the past 10 years (2008-2017) the annual numbers of fires have increased slightly to 61, while the annual acreage burned appears to have slightly decreased to 243 acres a year. This reduction in average size from just under five acres per fire to just over three acres per fire is perhaps the result of better response and equipment from both the Georgia Forestry Commission and the increased presence of rural fire departments. Despite this welcome trend in fire behavior, more homes are being built outside of traditional communities into the wildland urban interface.

The leading cause of these fires over the past 10 years was debris burning causing over 49% of the fires and 53% of the acres burned. The second leading cause was Machine Use accounting for 17% of the fires and 9% of the acreage burned. The 3<sup>rd</sup> leading cause was Incendiary (arson) causing 8% of the fires and 8% of the acreage burned.

Georgia Forestry Commission Wildfire Records also show that in the past five years, FY 2014-2018, one home has been damaged by wildfire in Johnson County resulting in estimated losses of \$8,000 along with three outbuildings valued at \$4,000. According to reports during this period 15 homes have been directly or indirectly threatened by these fires. Additionally five vehicles valued at \$7,500 and one other piece of mechanized equipment valued at \$400 was lost. This is a substantial loss of non-timber property attributed to wildfires in Johnson County.

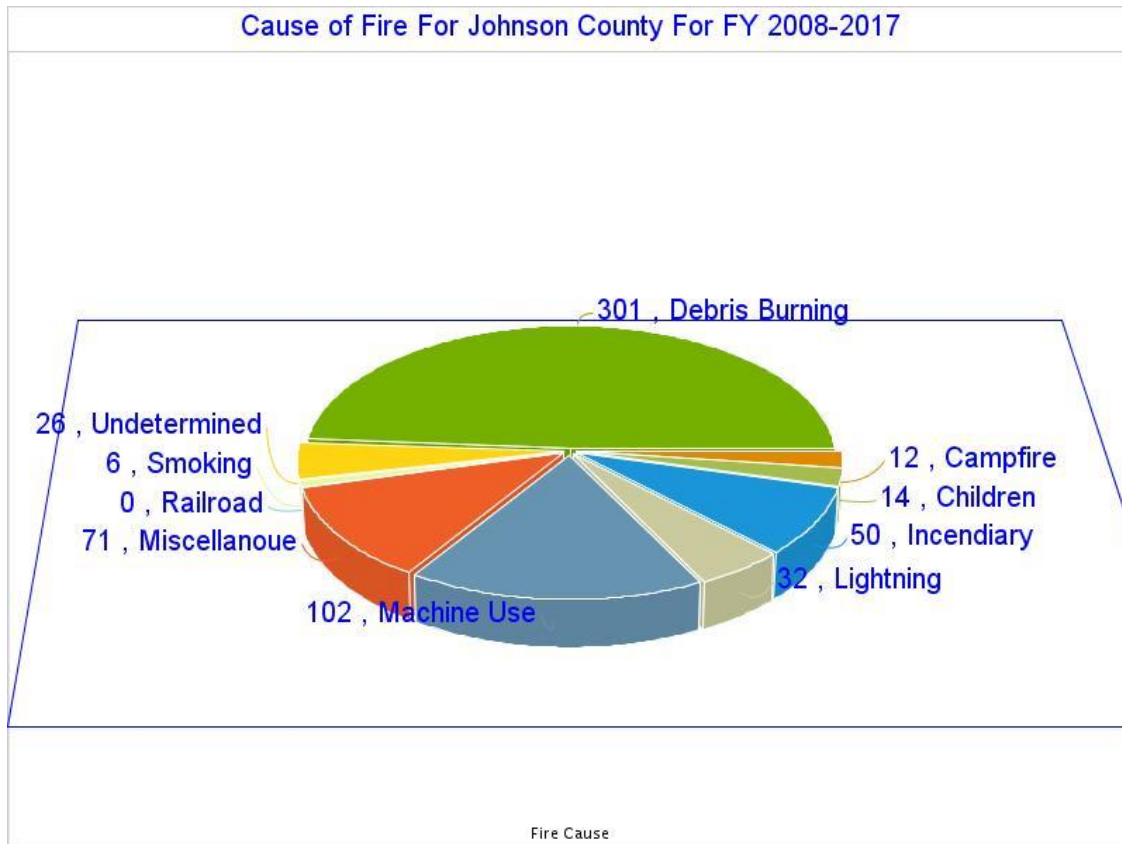
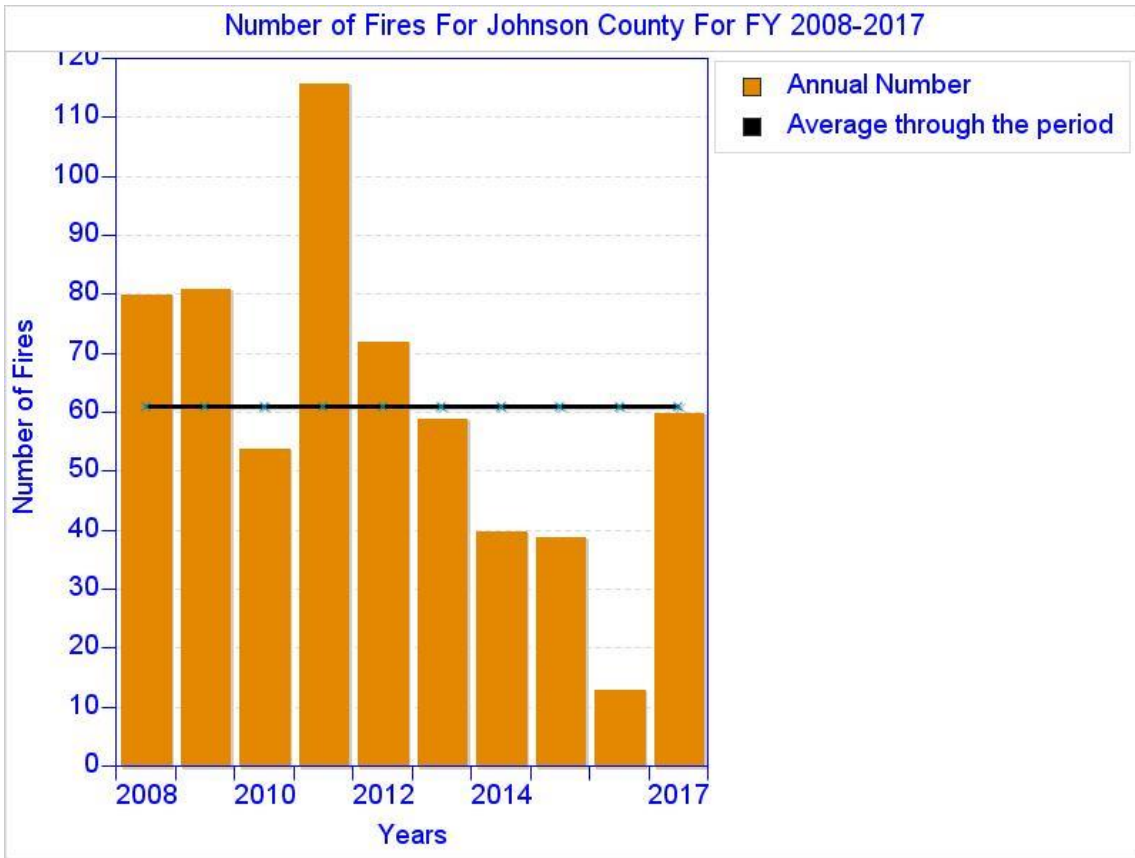
Johnson County Wildfires Fiscal year 2018 (July 1, 2018 – June 30, 2019)

County = Johnson	Cause	Fires	Acres	Fires 5 Yr Avg	Acres 5 Yr Avg
<a href="#">Campfire</a>	Campfire	0	0.00	1.00	2.73
<a href="#">Children</a>	Children	1	0.10	0.60	0.06
<a href="#">Debris: Ag Fields, Pastures, Orchards, Etc</a>	Debris: Ag Fields, Pastures, Orchards, Etc	3	6.21	2.00	8.22
<a href="#">Debris: Construction Land Clearing</a>	Debris: Construction Land Clearing	0	0.00	0.80	3.69
<a href="#">Debris: Escaped Prescribed Burn</a>	Debris: Escaped Prescribed Burn	5	61.13	7.60	50.22
<a href="#">Debris: Household Garbage</a>	Debris: Household Garbage	0	0.00	0.60	0.28
<a href="#">Debris: Other</a>	Debris: Other	0	0.00	0.80	25.80
<a href="#">Debris: Residential, Leafpiles, Yard, Etc</a>	Debris: Residential, Leafpiles, Yard, Etc	2	6.68	3.40	9.46
<a href="#">Debris: Site Prep - Forestry Related</a>	Debris: Site Prep - Forestry Related	9	70.71	3.20	39.09
<a href="#">Incendiary</a>	Incendiary	2	69.57	0.80	14.99
<a href="#">Lightning</a>	Lightning	2	1.88	2.60	9.96
<a href="#">Machine Use</a>	Machine Use	2	4.55	2.40	11.77
<a href="#">Miscellaneous: Cutting/Welding/Grinding</a>	Miscellaneous: Cutting/Welding/Grinding	0	0.00	0.20	4.20
<a href="#">Miscellaneous: Other</a>	Miscellaneous: Other	1	0.21	1.60	1.45
<a href="#">Miscellaneous: Power lines/Electric fences</a>	Miscellaneous: Power lines/Electric fences	2	0.59	2.00	3.88
<a href="#">Miscellaneous: Structure/Vehicle Fires</a>	Miscellaneous: Structure/Vehicle Fires	1	0.10	1.80	0.81
<a href="#">Smoking</a>	Smoking	0	0.00	0.20	0.40
<a href="#">Undetermined</a>	Undetermined	7	33.72	6.20	69.33
<b>Totals for County: Johnson Year: 2018</b>		37	255.45	37.80	256.34

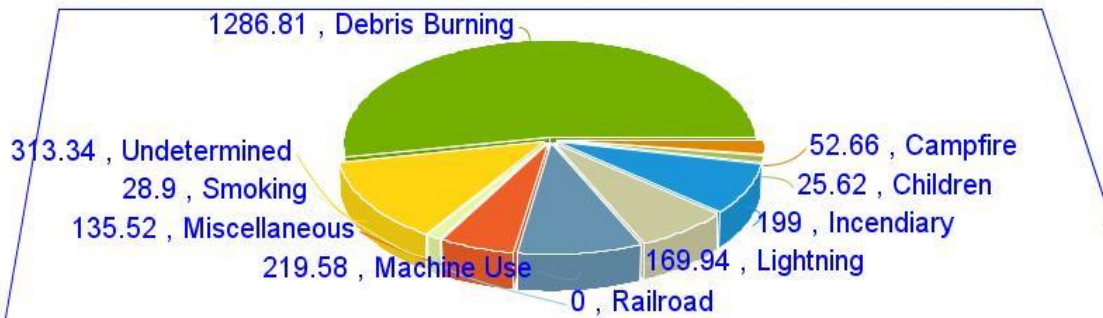


<b>Acreage Burned /Number of Fires For Johnson County For FY 2008-2017</b>				
<b>Year</b>	<b>Acreage Burned</b>	<b>Number of Fires</b>	<b>Average Size</b>	<b>Statewide Average Size</b>
2008	168.29	80	2.10	4.56
2009	271.57	81	3.35	3.90
2010	52.22	54	.97	3.93
2011	364.19	116	3.14	17.56
2012	324.14	72	4.50	5.08
2013	224.71	59	3.81	4.53
2014	166.87	40	4.17	5.02
2015	130.44	39	3.34	4.42
2016	68.28	13	5.25	6.29
2017	660.66	60	11.01	11.60

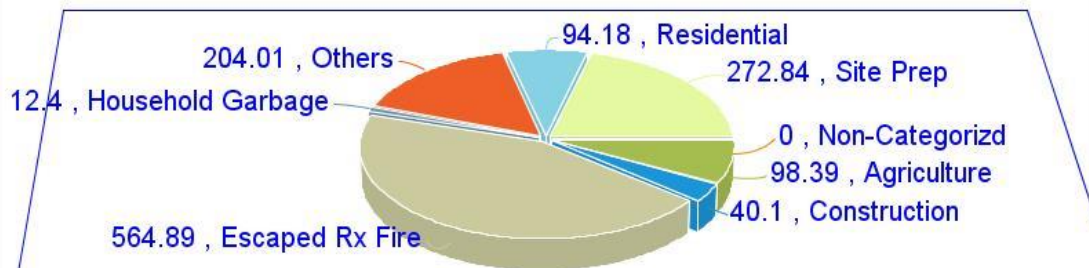
<b>Acreage Burned /Number of Fires by Fire Cause For Johnson County For FY 2008-2017</b>		
<b>Fire Cause</b>	<b>Acreage Burned</b>	<b>Number of Fires</b>
Campfire	52.66	12
Children	25.62	14
Debris Burning	1,286.81	301
Incendiary	199.00	50
Lightning	169.94	32
Machine Use	219.58	102
Miscellaneous	135.52	71
Railroad	0.00	0
Smoking	28.90	6
Undetermined	313.34	26
<b>Total</b>	<b>2,431.37</b>	<b>614</b>



Acreage Burned by Cause of Fire For Johnson County For FY 2008-2017

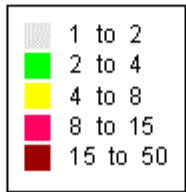
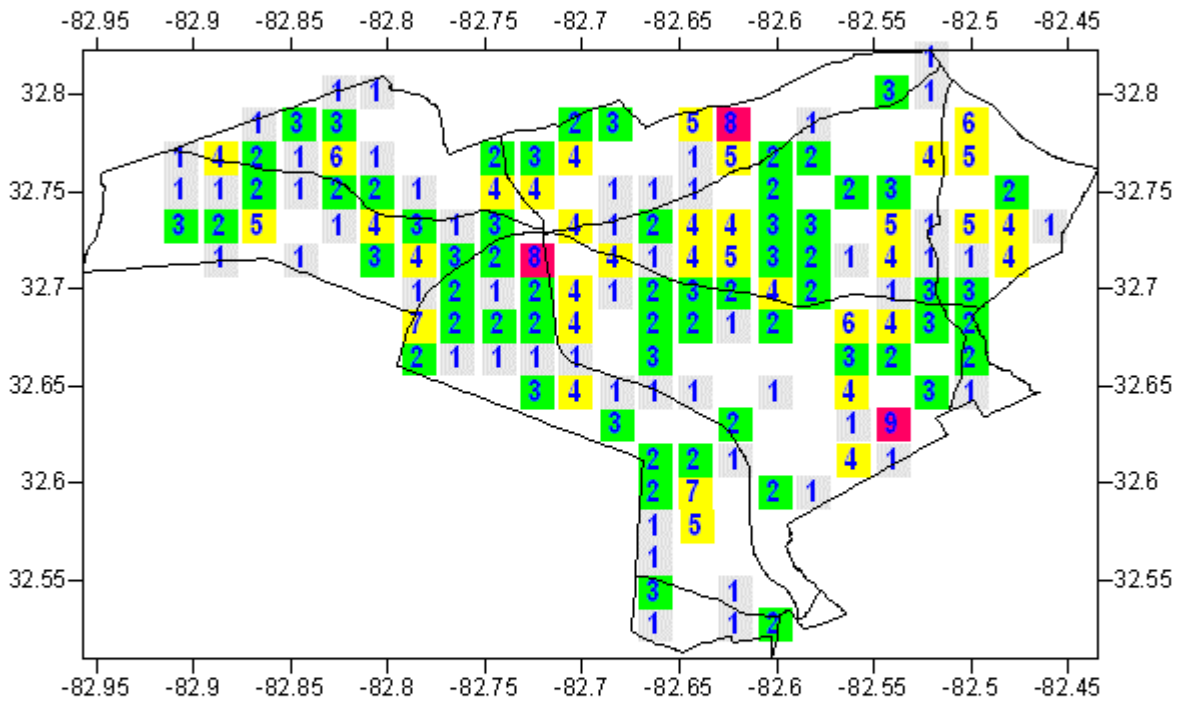


Acreage Burned By Debris Burning Sub Cause For Johnson County For FY 2008-2017

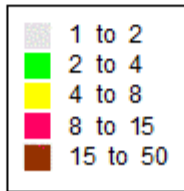
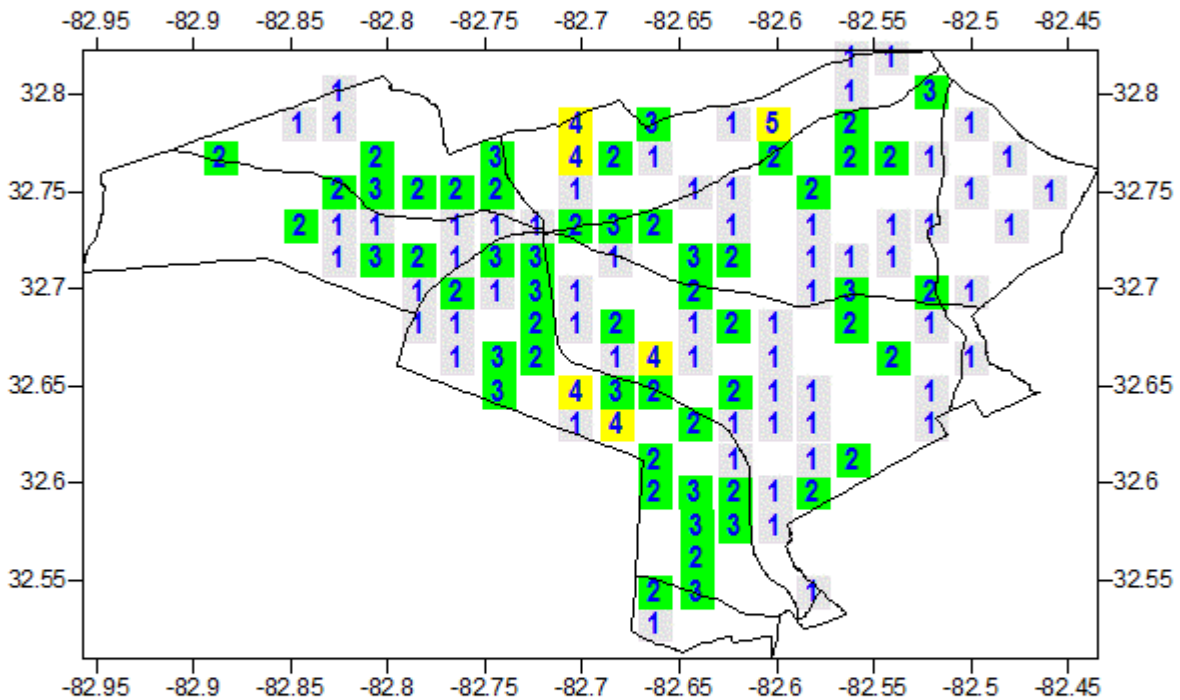


Fire Cause

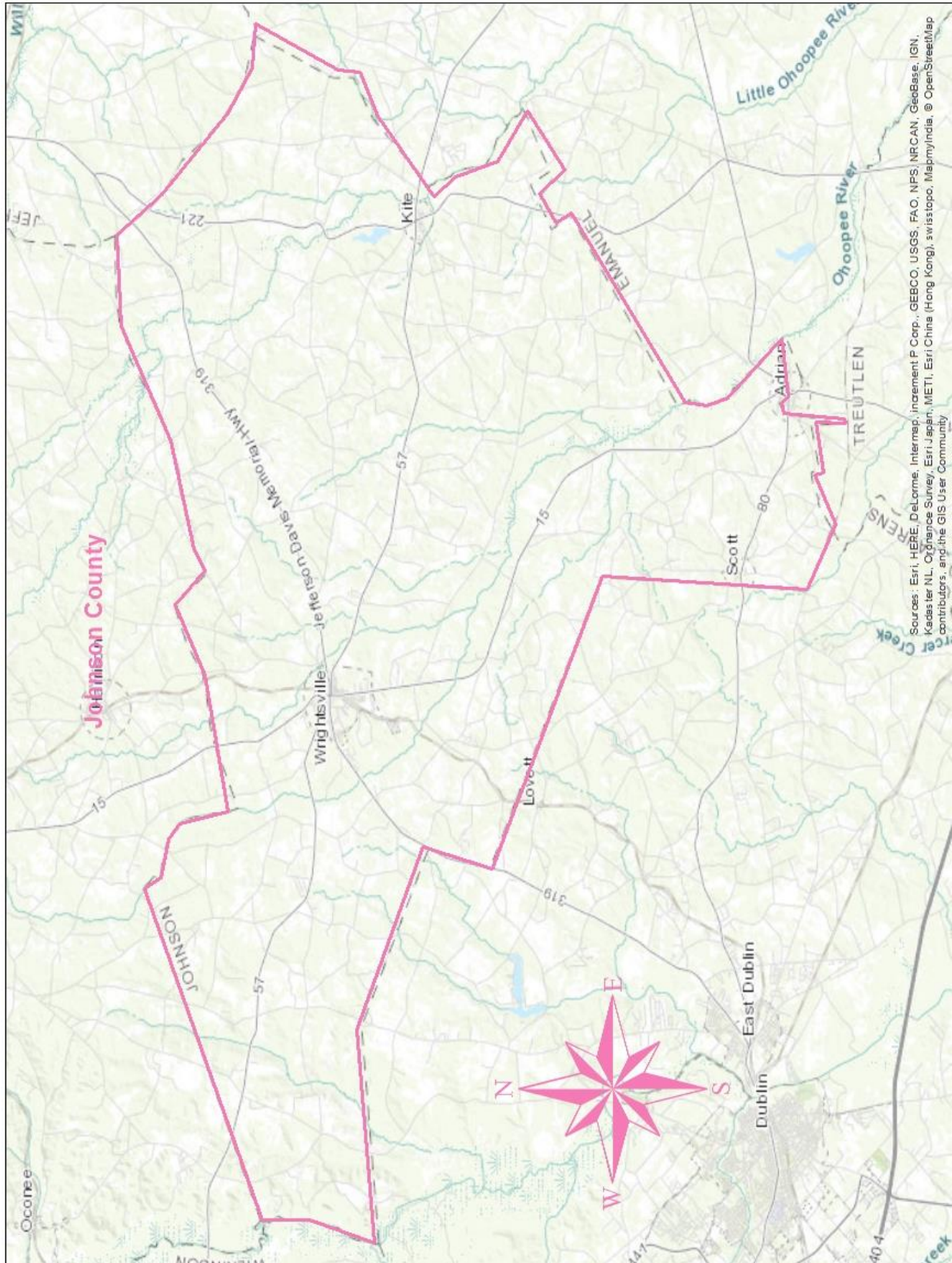
# Fire Occurrence Map for Johnson County for Fiscal Year 2007-2011



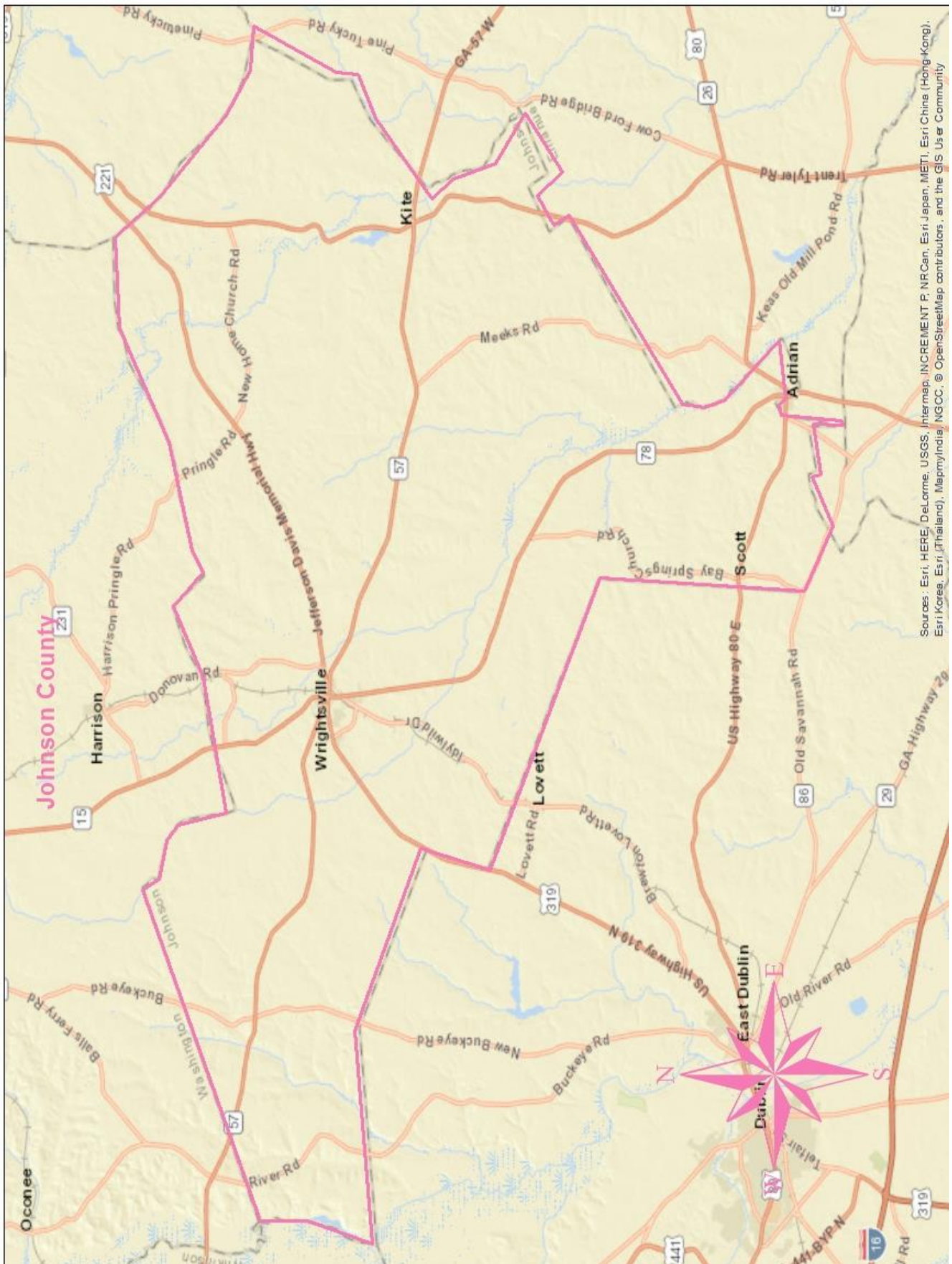
# Fire Occurrence Map for Johnson County for Fiscal Year 2012-2016



## IV. COMMUNITY BASE MAP







Sources: Esri, HERE, DeLorme, USGS, Intermap, INCREMENT P, NRCan, Esri Japan, METI, Esri China (Hong Kong), Esri Korea, Esri (India), MapmyIndia, NGCC, © OpenStreetMap contributors, and the GIS User Community



## V. COMMUNITY WILDFIRE RISK ASSESSMENT

### The Wildland-Urban Interface

There are many definitions of the Wildland-Urban Interface (WUI), however from a fire management perspective it is commonly defined as an area where structures and other human development meet or intermingles with undeveloped wildland or vegetative fuels. As fire is dependent on a certain set of conditions, the National Wildfire Coordinating Group has defined the wildland-urban interface as a set of conditions that exists in or near areas of wildland fuels, regardless of ownership. This set of conditions includes type of vegetation, building construction, accessibility, lot size, topography and other factors such as weather and humidity. When these conditions are present in certain combinations, they make some communities more vulnerable to wildfire damage than others. This “set of conditions” method is perhaps the best way to define wildland-urban interface areas when planning for wildfire prevention, mitigation, and protection activities.

There are three major categories of wildland-urban interface. Depending on the set of conditions present, any of these areas may be at risk from wildfire. A wildfire risk assessment can determine the level of risk.

- 1. “Boundary” wildland-urban interface** is characterized by areas of development where homes, especially new subdivisions, press against public and private wildlands, such as private or commercial forest land or public forests or parks. This is the classic type of wildland-urban interface, with a clearly defined boundary between the suburban fringe and the rural countryside.
- 2. “Intermix” wildland-urban interface** areas are places where improved property and/or structures are scattered and interspersed in wildland areas. These may be isolated rural homes or an area that is just beginning to go through the transition from rural to urban land use.
- 3. “Island” wildland-urban interface**, also called occluded interface, are areas of wildland within predominately urban or suburban areas. As cities or subdivisions grow, islands of undeveloped land may remain, creating remnant forests. Sometimes these remnants exist as parks, or as land that cannot be developed due to site limitations, such as wetlands.

The wildland fire risk assessments conducted in 2009 by the Johnson County Fire Departments returned an average score of 70 placing Johnson County in the “moderate” hazard range. The risk assessment instrument used to evaluate wildfire hazards to Johnson County’s WUI was the Hazard and Wildfire Risk Assessment Scoresheet. The instrument takes into consideration accessibility, vegetation (based on fuel models), roofing assembly, building construction, and availability of fire protection resources, placement of gas and electric utilities, and additional rating factors. The following factors contributed to the wildfire hazard score for Johnson County:

- Narrow unpaved roads without drivable shoulders
- Limited street signs and homes not clearly addressed
- Minimal defensible space around structures
- Homes with wooden siding and roofs with heavy accumulations of vegetative debris
- No pressurized or non-pressurized water systems available
- Large, adjacent areas of forest or wildlands
- Undeveloped lots comprising half the total lots in many rural communities.
- High occurrence of wildfires in the several locations
- Lack of homeowner or community organizations

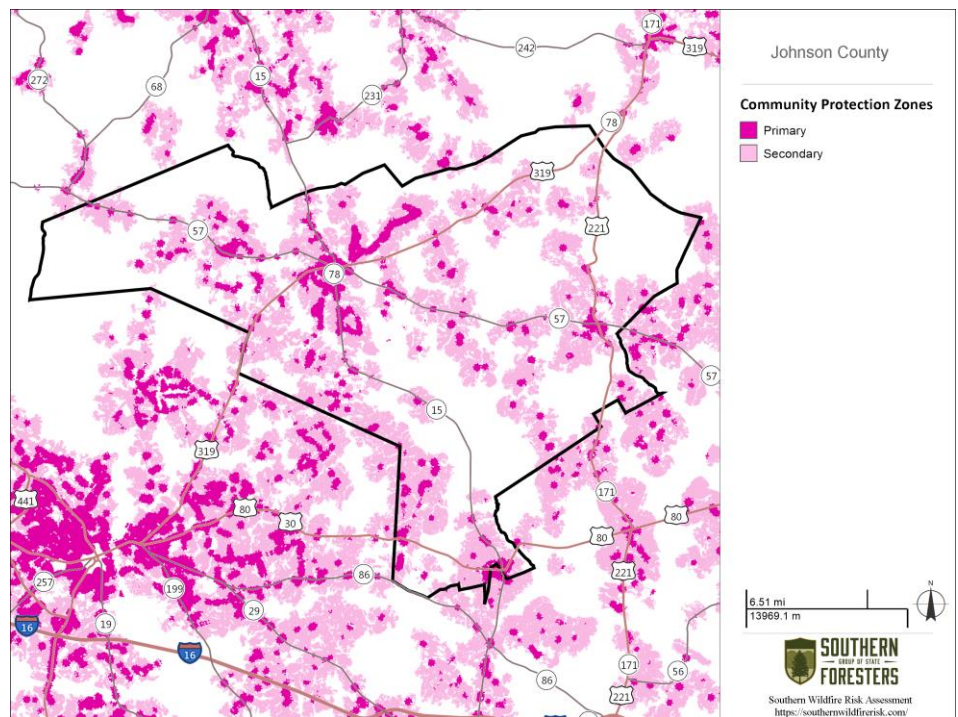
### Summary of Johnson County Assessment Ratings

Fire District/ Community	Access	Surrounding Vegetation	Bldg Construction	Fire Protection	Utilities	Additional Factors	Score	Hazard Rating
Wrightsville	9	15	15	2	5	15	61	Moderate
Scott Minters	9	15	15	13	3	20	74	Moderate
Chapel	6	20	15	13	4	12	70	Moderate
Kite/Meeks	7	20	16	18	1	6	68	Moderate
Raines/ Buckeye	8	15	20	21	1	8	73	Moderate
Moores/ New Home/ Pineymount	8	15	20	25	1	5	74	Moderate
<b>Average</b>	<b>8</b>	<b>17</b>	<b>17</b>	<b>15</b>	<b>3</b>	<b>11</b>	<b>70</b>	<b>Moderate</b>

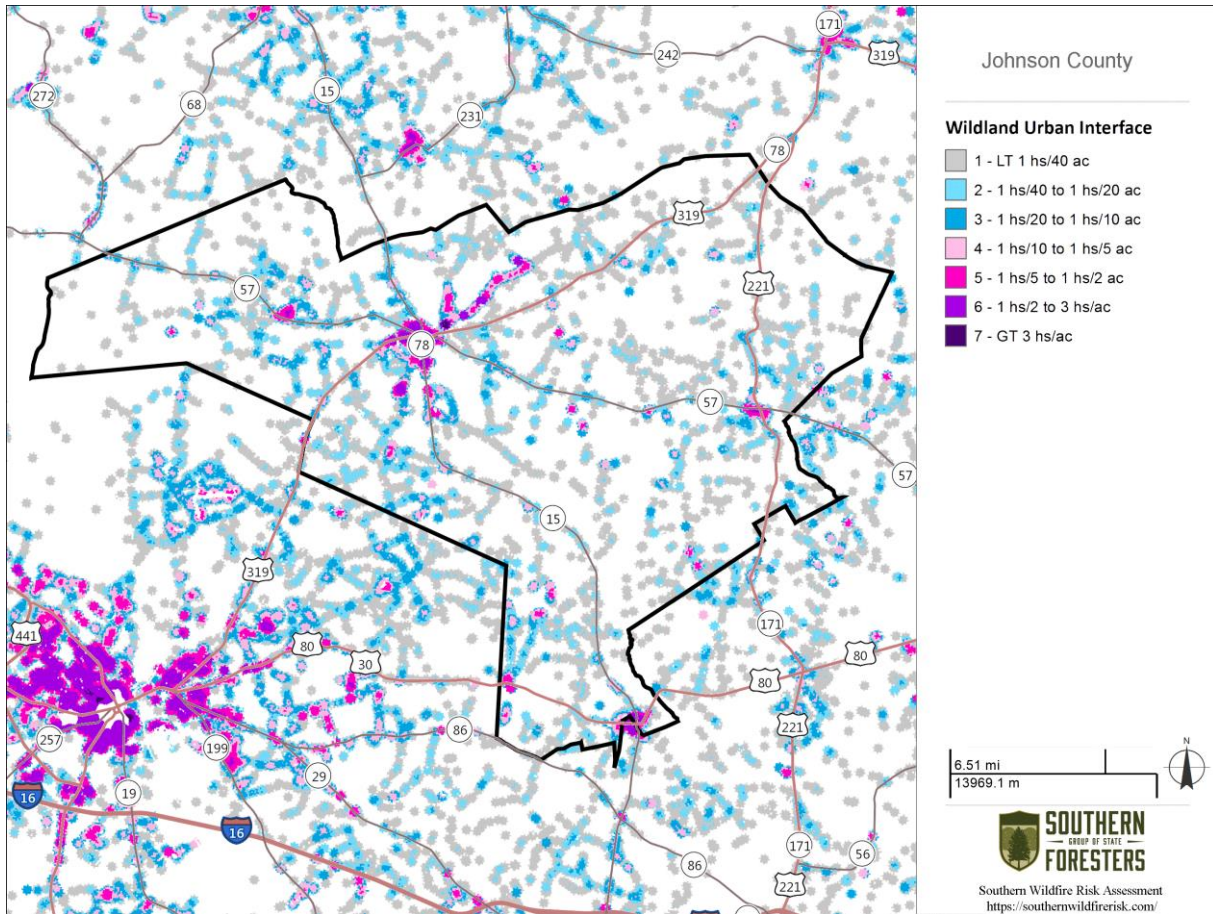
## VI. SOUTHERN WILDFIRE RISK ASSESSMENT & RISK HAZARD MAPS

The Southern Wildfire Risk Assessment tool, developed by the Southern Group of State Foresters, was released to the public in July 2014. This tool allows users of the Professional Viewer application of the Southern Wildfire Risk Assessment (SWRA) web Portal (SouthWRAP) to define a specific project area and summarize wildfire related information for this area. A detailed risk summary report is generated using a set of predefined map products developed by the Southern Wildfire Risk Assessment project which have been summarized explicitly for the user defined project area. A risk assessment summary was generated for Johnson County. The SouthWRAP (SWRA) products included in this report are designed to provide the information needed to support the following key priorities:

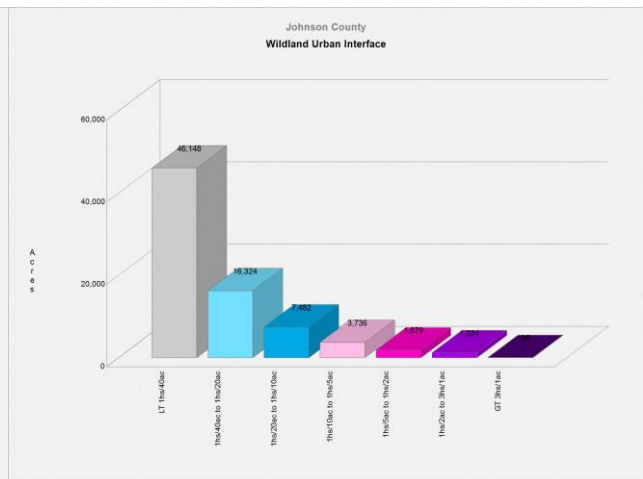
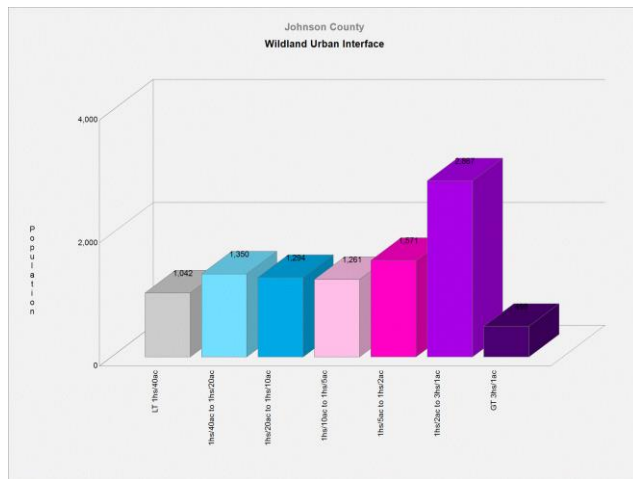
- Identify areas that are most prone to wildfire.
- Identify areas that may require additional tactical planning, specifically related to mitigation projects and Community Wildfire Protection Planning.
- Provide the information necessary to justify resource, budget and funding requests.
- Allow agencies to work together to better define priorities and improve emergency response, particularly across jurisdictional boundaries.
- Define wildland communities and identify the risk to those communities.
- Increase communication and outreach with local residents and the public to create awareness and address community priorities and needs.
- Plan for response and suppression resource needs.
- Plan and prioritize hazardous fuel treatment.

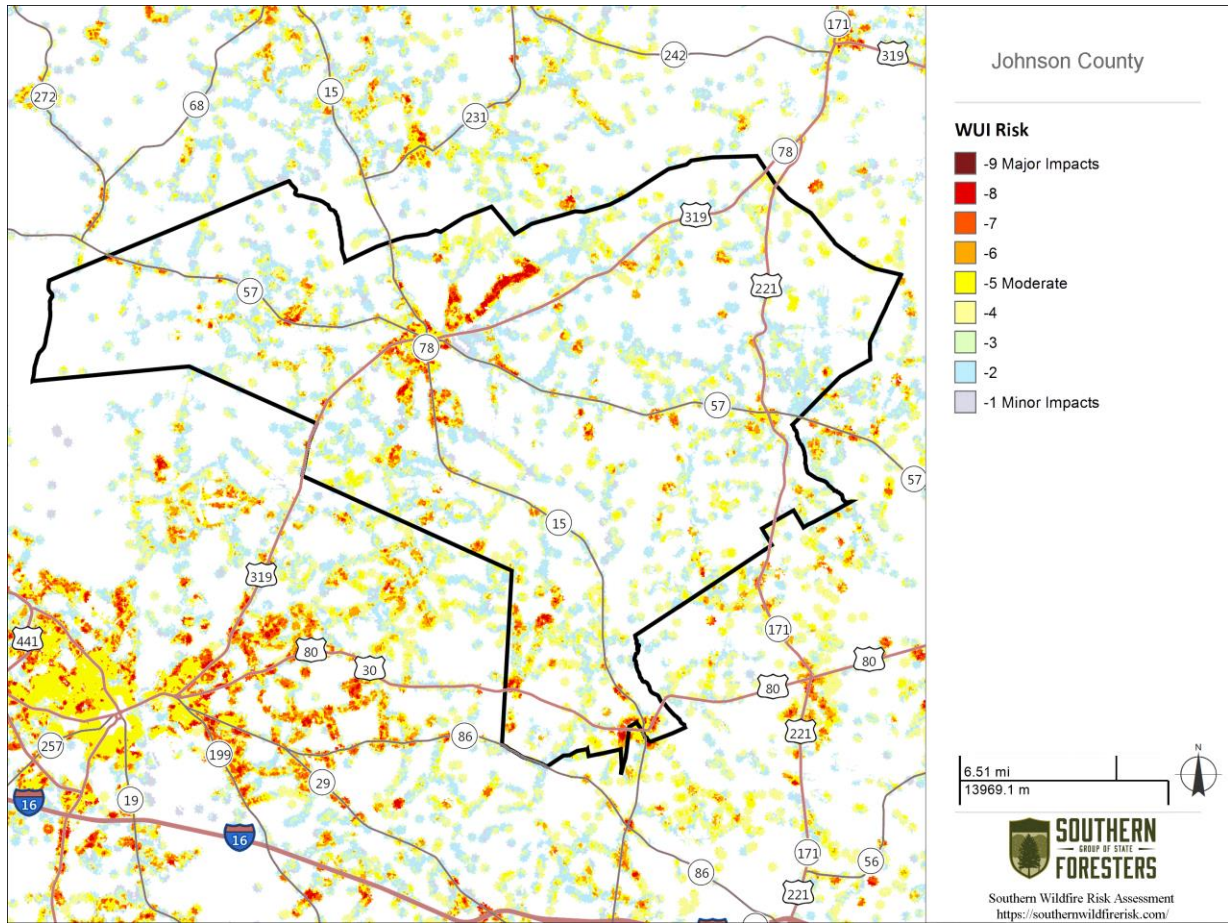


Community Protection Zones map from the Johnson County SWRA

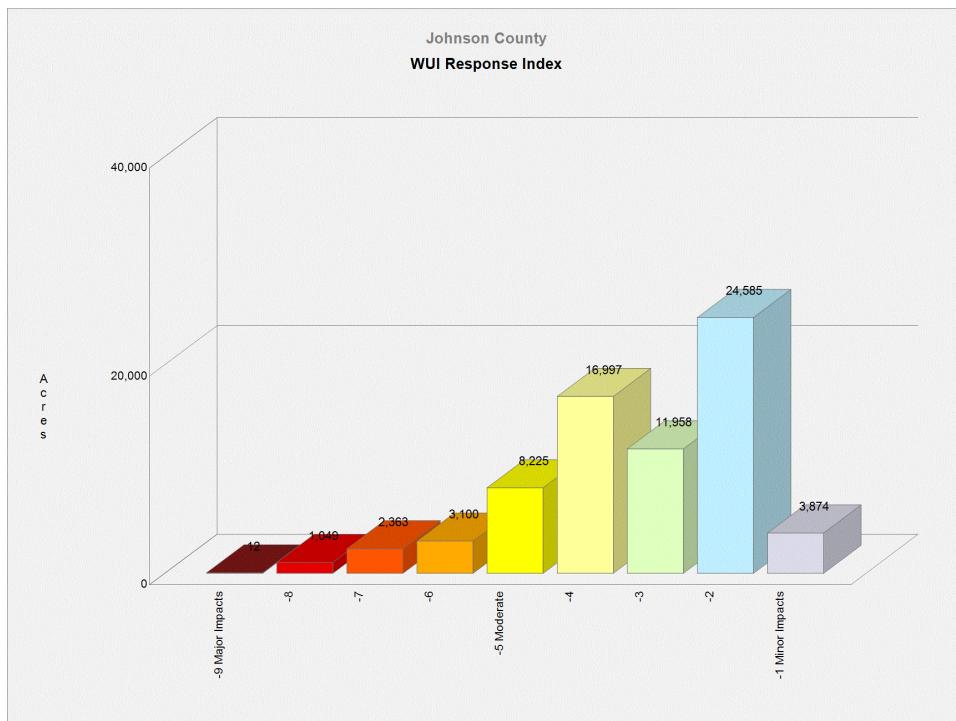


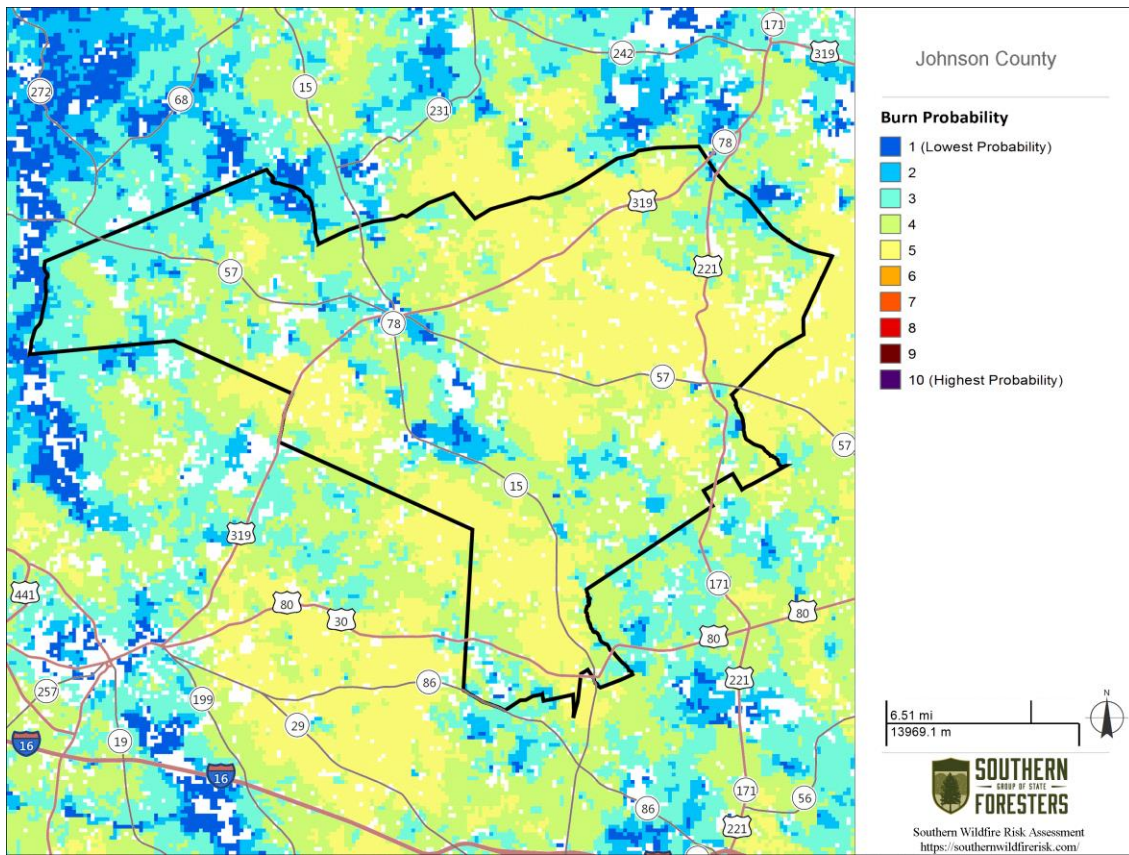
Above: Wildland Urban Interface (WUI) map      Below: WUI Population (left) WUI Acres (right)



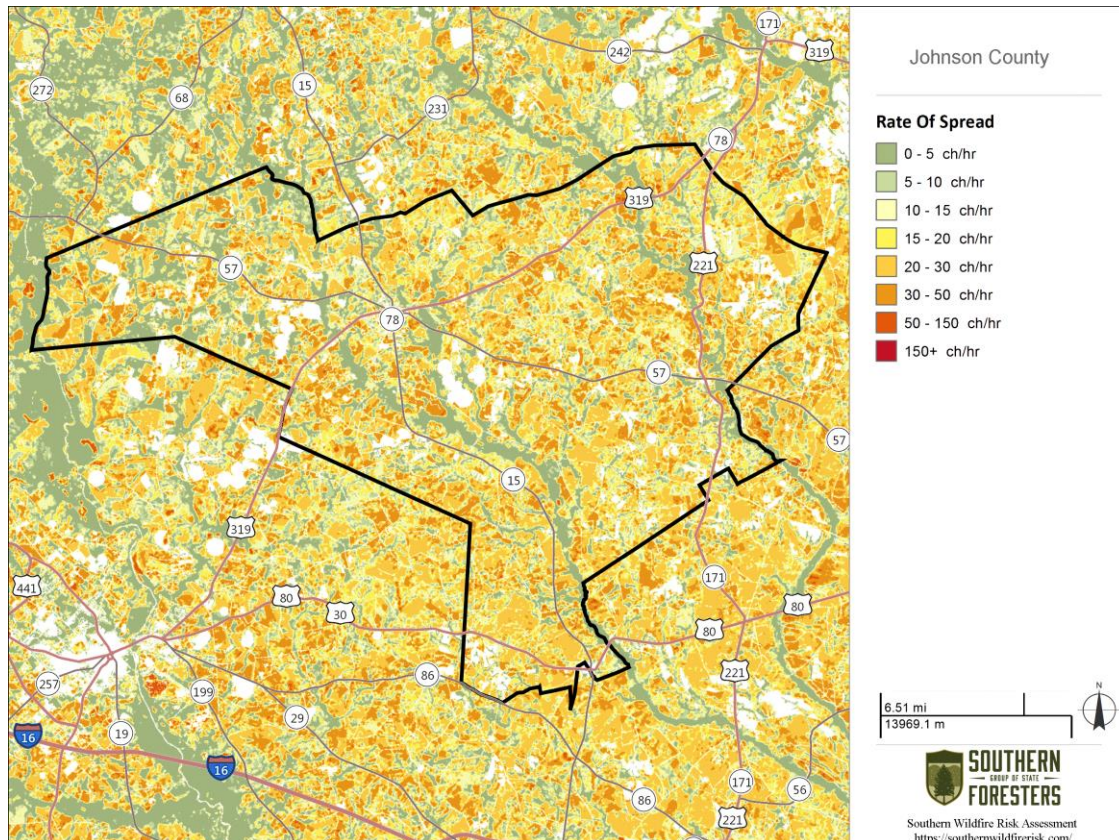


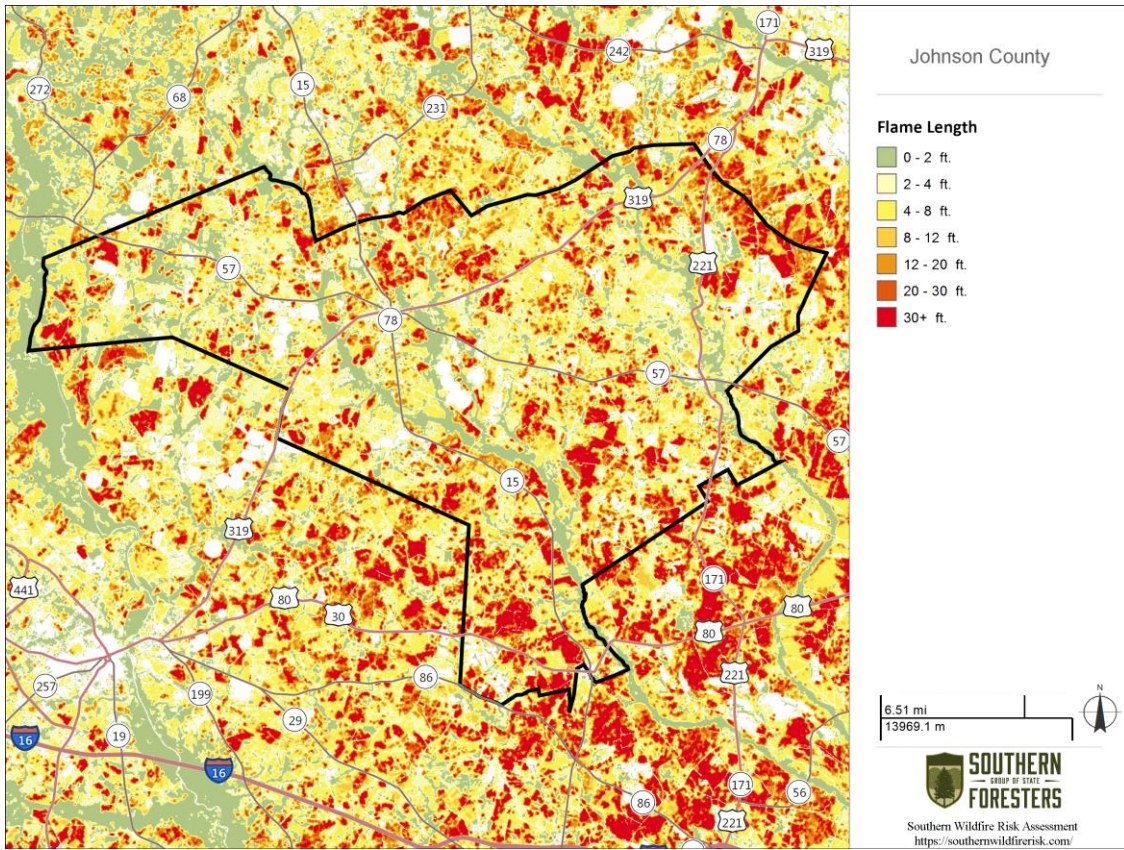
**Above: Wildland Urban Interface (WUI) Risk map      Below WUI Risk Index Acres**



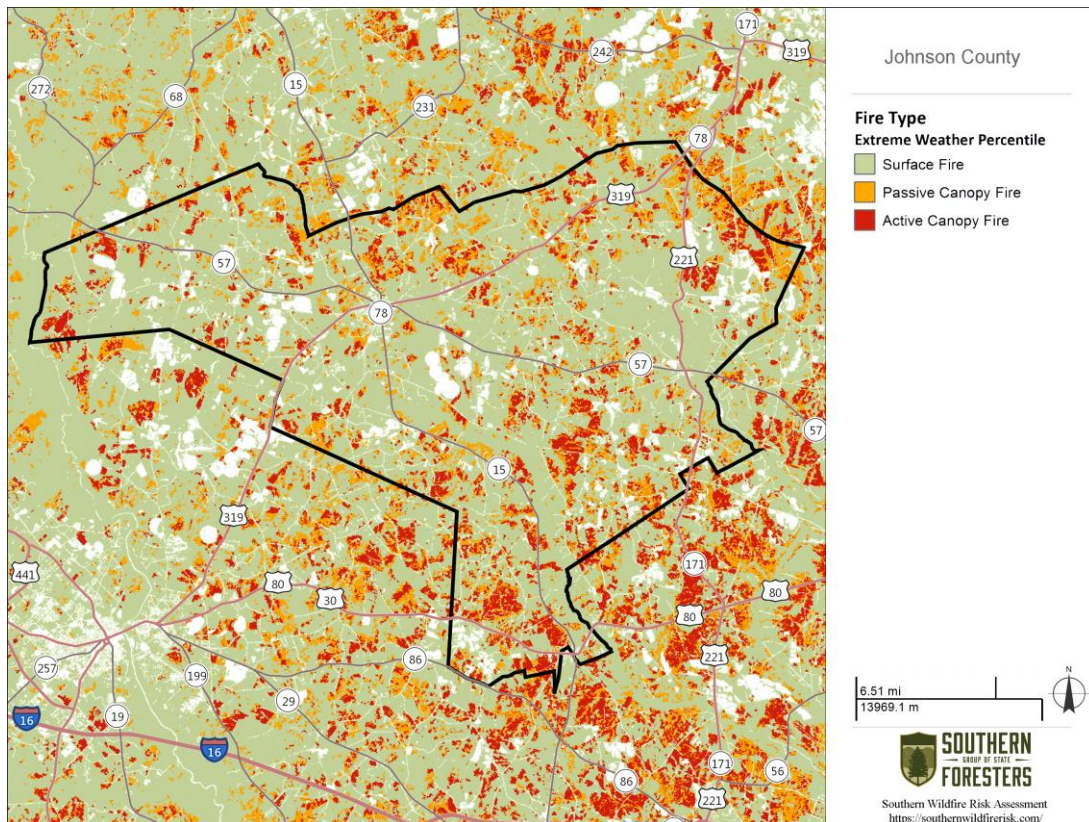


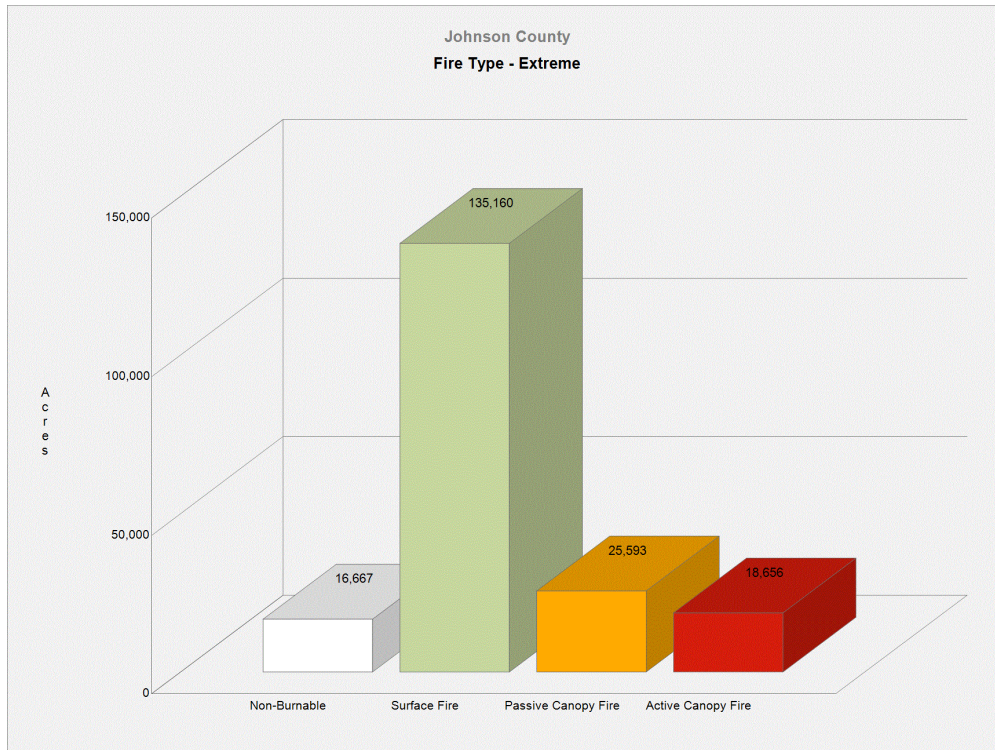
Above: Burn Probability map    Below: Rate of Spread map





Above: Flame Length map    Below: Fire Type map





**Above: Johnson County Fire Type Acres**

**Surface Fire**

A fire that spreads through surface fuel without consuming any overlying canopy fuel. Surface fuels include grass, timber litter, shrub/brush, slash and other dead or live vegetation within about 6 feet of the ground.



**Passive Canopy Fire**

A type of crown fire in which the crowns of individual trees or small groups of trees burn, but solid flaming in the canopy cannot be maintained except for short periods (Scott & Reinhardt, 2001).



**Active Canopy Fire**

A crown fire in which the entire fuel complex (canopy) is involved in flame, but the crowning phase remains dependent on heat released from surface fuel for continued spread (Scott & Reinhardt, 2001).





## VII. PRIORITIZED MITIGATION RECOMMENDATIONS

### Executive Summary

As Southern Georgia continues to see increased growth from other areas seeking less crowded and warmer climates, new development will occur more frequently on forest and wildland areas. Johnson County will have an opportunity to significantly influence the wildland fire safety of new developments. It is important that new development be planned and constructed to provide for public safety in the event of a wildland fire emergency.

Over the past 20 years, much has been learned about how and why homes burn during wildland fire emergencies. Perhaps most importantly, case histories and research have shown that even in the most severe circumstances, wildland fire disasters can be avoided. Homes can be designed, built and maintained to withstand a wildfire even in the absence of fire services on the scene. The national Firewise Communities program is a national awareness initiative to help people understand that they don't have to be victims in a wildfire emergency. The National Fire Protection Association has produced two standards for reference: NFPA 1144 Standard for Reducing Structure Ignition Hazards from Wildland Fire, 2008 Edition and NFPA 1141 Standard for Fire Protection Infrastructure for Land Development in Suburban and Rural Areas.

When new developments are built in the Wildland/Urban Interface, a number of public safety challenges may be created for the local fire services: (1) the water supply in the immediate areas may be inadequate for fire suppression; (2) if the Development is in an outlying area, there may be a longer response time for emergency services; (3) in a wildfire emergency, the access road(s) may need to simultaneously support evacuation of residents and the arrival of emergency vehicles; and (4) when wildland fire disasters strike, many structures may be involved simultaneously, quickly exceeding the capability of even the best equipped fire departments.

In 2012 the International Code Council developed the International Wildland Urban Interface Code (IWUIC). This code was adopted by the Georgia Legislature in 2014 for Counties to use when developing building and zoning codes in the Wildland Urban Interface (WUI) to help reduce risk and minimize structure loss.

The following recommendations were developed by the Johnson County CWPP Core team as a result of surveying and assessing fuels and structures and by conducting meetings and interviews with county and city officials. A priority order was determined based on which mitigation projects would best reduce the hazard of wildfire in the assessment area.

**Proposed Community Hazard and Structural Ignitability Reduction Priorities**

Primary Protection for Community and Its Essential Infrastructure		
Treatment Area	Treatment Types	Treatment Method(s)
1. All Structures	Create minimum of 30-foot of defensible space**	Trim shrubs and vines to 30 feet from structures, trim overhanging limbs, replace flammable plants near homes with less flammable varieties, remove vegetation around chimneys.
2. Applicable Structures	Reduce structural ignitability**	Clean flammable vegetative material from roofs and gutters, store firewood appropriately, install skirting around raised structures, store water hoses for ready access, and replace pine straw and mulch around plantings with less flammable landscaping materials.
3. Community Clean-up Day National Wildfire Preparedness Day (1 <sup>st</sup> Saturday in May annually)	Cutting, mowing, pruning**	Cut, prune, and mow vegetation in shared community spaces.
4. Driveway Access	Culvert installation	See that adequate lengths of culverts are installed to allow emergency vehicle access.
5. Road Access	Identify needed road improvements	As roads are upgraded, widen to minimum standards with at least 50 foot diameter cul de sacs or turn arounds.
6. Codes and Ordinances	Examine existing codes and ordinances.  International Wildland Urban Interface Code IWUIC	Amend and enforce existing building codes as they relate to skirting, propane tank locations, public nuisances (trash/debris on property), Property address marking standards and other relevant concerns  Review Subdivision and development ordinances for public safety concerns.
7. Burn Permits	Education and Enforcement	Greater Burn Permit enforcement and education from the Georgia Forestry Commission.

<b>Proposed Community Wildland Fuel Reduction Priorities</b>		
Treatment Area	Treatment Types	Treatment Method(s)
1. Adjacent WUI Lands	Reduce hazardous fuels	Encourage prescribed burning for private landowners and industrial timberlands particularly adjacent to residential areas.  Seek grant for prescribed burning in WUI areas.
2. Railroad Corridors	Reduce hazardous fuels	Encourage railroads to better maintain their ROW eliminating brush and grass through herbicide and mowing. Maintain firebreaks along ROW adjacent to residential areas.
3. Existing Fire Lines	Reduce hazardous fuels	Clean and re-harrow existing lines.
<b>Proposed Improved Community Wildland Fire Response Priorities</b>		
1. Water Sources	Dry Hydrants	Inspect, maintain and improve access to existing dry hydrants. Add signage along road to mark the hydrants.  Locate additional dry hydrants as needed.  Locate and pre-clear helicopter dip sites.
2. Fire Stations	Equipment	Wildland hand tools. Lightweight Wildland PPE Gear.
3. Addressing	Uniform Standard	Draft uniform addressing ordinance.
4. Road Names	Road Signage	Improved Road Signage at Crossroads. "Dead End" or "No Outlet" Tags on Road Signs.
5. Personnel	Training	Obtain Wildland Fire Suppression training for Fire Personnel. Ready Set Go training.
6. County maps	Develop Fire Response Maps	Provide maps showing potential road problems for responding emergency Vehicles.
**Actions to be taken by homeowners and community stakeholders		

## Proposed Education and Outreach Priorities

<p>1. Conduct “How to Have a Firewise Home” Workshop for Johnson County Residents</p>
<p>Set up and conduct a workshop for homeowners that teach the principles of making homes and properties safe from wildfire. Topics for discussion include defensible space, landscaping, building construction, etc. Workshop will be scheduled for evenings or weekends when most homeowners are available and advertised through local media outlets.</p> <p>Distribute materials promoting firewise practices and planning through local community and governmental meetings.</p>
<p>2. Conduct “Firewise” Workshop for Community Leaders</p>
<p>Arrange for GFC Firewise program to work with local community leaders and governmental officials on the importance of “Firewise Planning” in developing ordinances and codes as the county as the need arises. Identify “Communities at Risk” within the county for possible firewise community recognition.</p>
<p>3. Spring Clean-up Event (National Wildfire Preparedness Day – 1<sup>st</sup> Saturday in May annually)</p>
<p>Conduct clean-up event every spring involving the Georgia Forestry Commission, Johnson County Fire Departments and community residents. Set up information table with educational materials and refreshments. Initiate the event with a morning briefing by GFC Firewise coordinator and local fire officials detailing plans for the day and safety precautions. Activities to include the following:</p> <ul style="list-style-type: none"> <li>• Clean flammable vegetative material from roofs and gutters</li> <li>• Trim shrubs and vines to 30 feet away from structures</li> <li>• Trim overhanging limbs</li> <li>• Clean hazardous or flammable debris from adjacent properties</li> </ul> <p>Celebrate the work with a community cookout, with Community officials, GFC and Johnson County Fire Departments discussing and commending the work accomplished.</p>
<p>4. Informational Packets</p>
<p>Develop and distribute informational packets to be distributed by realtors and insurance agents. Included in the packets are the following:</p> <ul style="list-style-type: none"> <li>• Be Firewise Around Your Home</li> <li>• Firewise Guide to Landscape and Construction</li> <li>• Firewise Communities USA Brochures</li> <li>• Ready Set Go materials</li> <li>• Fire Adapted Community information</li> </ul>

5. Wildfire Protection Display

Create and exhibit a display for the general public at local events. Display can be independent or combined with the Georgia Forestry Commission display.

Hold Open House at individual Fire Stations to promote Community Firewise Safety and develop community support and understanding of local fire departments and current issues.

6. Media

Invite the local news media to community “Firewise” functions for news coverage and regularly submit press releases documenting wildfire risk improvements in Johnson County. Utilize TV, radio, cable access, and social media to reach diverse and new audiences.



**The Georgia Forestry Commission can assist with developing a prescribed burning plan, installation of firebreaks, and can provide equipment standby and burning assistance when personnel are available. Private forestry contractors can also provide this service.**



**Forestry mastication equipment and brush cutters, such as pictured above, can be very effective in reducing understory fuels in areas where prescribed fire may not be an option. Private contractors can provide this service. This practice is effective where homes border on the wildland urban interface.**

## VIII. ACTION PLAN

### Roles and Responsibilities

The following roles and responsibilities have been developed to implement the action plan:

Role	Responsibility
<b>Hazardous Fuels and Structural Ignitability Reduction</b>	
Johnson County WUI Fire Council	Create this informal team or council comprised of residents, GFC officials, Johnson County Fire department officials, a representative from the city and county government and the EMA Director for Johnson County. Meet periodically to review progress towards mitigation goals, appoint and delegate special activities, work with federal, state, and local officials to assess progress and develop future goals and action plans. Work with residents to implement projects and firewise activities.
Key Messages to focus on	<ol style="list-style-type: none"> <li>1 Defensible Space and Firewise Landscaping</li> <li>2 Debris Burning Safety</li> <li>3 Firewise information for homeowners</li> <li>4 Prescribed burning benefits</li> </ol>
Communications objectives	<ol style="list-style-type: none"> <li>1 Create public awareness for fire danger and defensible space issues</li> <li>2 Identify most significant human cause fire issues</li> <li>3 Enlist public support to help prevent these causes</li> <li>4 Encourage people to employ fire prevention and defensible spaces in their communities.</li> </ol>
Target Audiences	<ol style="list-style-type: none"> <li>1 Homeowners</li> <li>2 Forest Landowners and users</li> <li>3 Civic Groups</li> <li>4 School Groups</li> </ol>
Methods	<ol style="list-style-type: none"> <li>1 News Releases</li> <li>2 Radio and TV PSAs</li> <li>3 Personal Contacts &amp; Social media</li> <li>4 Key messages and prevention tips</li> <li>5 Visuals such as signs, brochures and posters</li> </ol>

Spring Clean-up Day (National Wildfire Preparedness Day – 1 <sup>st</sup> Saturday in May annually)	
Event Coordinator	Coordinate day’s events and schedule, catering for cookout, guest attendance, and moderate activities the day of the day of the event.
Event Treasurer	Collect funds from residents to cover food, equipment rentals, and supplies.
Publicity Coordinator	Advertise event through neighborhood newsletter, letters to officials, and public service announcements (PSAs) for local media outlets. Publicize post-event through local paper and radio PSAs.
Work Supervisor	Develop volunteer labor force of community residents; develop labor/advisory force from Georgia Forestry Commission, Johnson County Fire Departments, and Emergency Management Agency. Procure needed equipment and supplies. In cooperation with local city and county officials, develop safety protocol. Supervise work and monitor activities for safety the day of the event.

**Funding Needs**

The following funding is needed to implement the action plan:

Project	Estimated Cost	Potential Funding Source(s)
1. Create a minimum of 30 feet of defensible space around structures	Varies	Residents will supply labor and fund required work on their own properties.
2. Reduce structural ignitability by cleaning flammable vegetation from roofs and gutters; appropriately storing firewood, installing skirting around raised structures, storing water hoses for ready access, replacing pine needles and mulch around plantings with less flammable material.	Varies	Residents will supply labor and fund required work on their own properties.
3. Amend codes and ordinances to provide better driveway access, increased visibility of house numbers, properly stored firewood, minimum defensible space brush clearance, required Class A roofing materials and skirting around raised structures, planned maintenance of community lots.	No Cost	To be adopted by city and county government. IWUIC
4. Spring Cleanup Day National Wildfire Preparedness Day	Varies	Community Business Donations. State Farm Grants
5. Fuel Reduction Activities	\$35 / acre	FEMA & USFS Grants

### Assessment Strategy

To accurately assess progress and effectiveness for the action plan, the Johnson County WUI Fire Council will implement the following:

- Annual wildfire risk assessment will be conducted to re-assess wildfire hazards and prioritize needed actions.
- Mitigation efforts that are recurring (such as mowing, burning, and clearing of defensible space) will be incorporated into an annual renewal of the original action plan.
- Mitigation efforts that could not be funded in the requested year will be incorporated into the annual renewal of the original action plan.
- Continuing educational and outreach programs will be conducted and assessed for effectiveness. Workshops will be evaluated based on attendance and post surveys that are distributed by mail 1 month and 6 months following workshop date.
- The Johnson County WUI Council will publish an annual report detailing mitigation projects initiated and completed, progress for ongoing actions, funds received, funds spent, and in-kind services utilized. The report will include a “state of the community” section that critically evaluates mitigation progress and identifies areas for improvement. Recommendations will be incorporated into the annual renewal of the action plan.
- An annual survey will be distributed to residents soliciting information on individual mitigation efforts on their own property (e.g., defensible space). Responses will be tallied and reviewed at the next Johnson County WUI Council meeting. Needed actions will be discussed and delegated.

This plan should become a working document that is shared by local, state, and federal Agencies that will use it to accomplish common goals. An agreed-upon schedule for meeting to review accomplishments, solve problems, and plan for the future should extend beyond the scope of this plan. Without this follow up this plan will have limited value.



## IX. MITIGATION ASSISTANCE & GRANT FUNDING

Community Protection Grant: US Forest Service sponsored prescribed fire program. Communities with “at-risk” properties that lie within ten miles of a National Forest, National Park Service or Bureau of Land Management tracts may apply with the Georgia Forestry Commission to have their land prescribe burned free-of-charge. Forest mastication, where it is practical with Georgia Forestry Commission equipment, is also available under this grant program.

FEMA Mitigation Policy MRR-2-08-01: through GEMA – Hazard Mitigation Grant Program (HMGP) and Pre-Disaster Mitigation Program (PDM).

1. To provide technical and financial assistance to local governments to assist in the implementation of long term, cost effective hazard mitigation accomplishments.
2. This policy addresses wildfire mitigation for the purpose of reducing the threat to all-risk structures through creating defensible space, structural protection through the application of ignition resistant construction and limited hazardous fuel reduction to protect life and property.
3. With a completed registered plan (addendum to the State Plan) counties can apply for pre-mitigation funding. They will also be eligible for HMGP funding if the county is declared under a wildfire disaster.

Georgia Forestry Commission: Plowing and prescribed burning assistance, as well as forest mastication, can be obtained from the GFC as a low-cost option for mitigation efforts.

The Georgia Forestry Commission Firewise Community Mitigation Assistance Grants – Nationally recognized Firewise Communities can receive up to \$5000 grants to help address potential wildfire risk reduction projects. Grant submission can be made through local Georgia Forestry Commission offices or your Regional Wildfire Prevention Specialist.

The International Association of Fire Chiefs (IAFC) and American International Group, Inc. (AIG) offer grants to assist local fire departments in establishing or enhancing their community fuels mitigation programs while educating members of the community about community wildfire readiness and encouraging personal action.

## X. GLOSSARY

*Community-At-Risk – A group of two or more structures whose proximity to forested or wildland areas places homes and residents at some degree of risk.*

*Critical Facilities – Buildings, structures or other parts of the community infrastructure that require special protection from an approaching wildfire.*

*CWPP – The Community Wildfire Protection Plan.*

*Defensible Space – The immediate landscaped area around a structure (usually a minimum of 30 ft.) kept “lean, clean and green” to prevent an approaching wildfire from igniting the structure.*

*Dry Hydrant - A non-pressurized pipe system permanently installed in existing lakes, ponds and streams that provides a suction supply of water to a fire department tank truck.*

*FEMA – The Federal Emergency Management Agency whose mission is to support our citizens and first responders to ensure that as a nation we work together to build, sustain, and improve our capability to prepare for, protect against, respond to, recover from, and mitigate all hazards.*

*Fire Adapted Community – A community fully prepared for its wildfire risk by taking actions to address safety, homes, neighborhoods, businesses and infrastructure, forest, parks, open spaces, and other community assets.*

*Firewise Program – A national initiative with a purpose to reduce structural losses from wildland fires.*

*Firewise Community/USA – A national recognition program for communities that take action to protect themselves from wildland fire. To qualify a community must have a wildfire risk assessment by the Georgia Forestry Commission, develop a mitigation action plan, have an annual firewise mitigation/education event, have dedicated firewise leadership, and complete the certification application.*

*Fuels – All combustible materials within the wildland/urban interface or intermix including, but not limited to, vegetation and structures.*

*Fuel Modification – Any manipulation or removal of fuels to reduce the likelihood of ignition or the resistance to fire control.*

*Hazard & Wildfire Risk Assessment – An evaluation to determine an area’s (community’s) potential to be impacted by an approaching wildland fire.*

*Healthy Forests Initiative - Launched in August 2002 by President Bush (following passage of the Healthy Forests Restoration Act by Congress) with the intent to reduce the risks severe wildfires pose to people, communities, and the environment.*

Home Ignition Zone (Structure Ignition Zone) - *Treatment area for wildfire protection. The “zone” includes the structure(s) and their immediate surroundings from 0-200 ft.*

Mitigation – *An action that moderates the severity of a fire hazard or risk.*

National Fire Plan – *National initiative, passed by Congress in the year 2000, following a landmark wildland fire season, with the intent of actively responding to severe wildland fires and their impacts to communities while ensuring sufficient firefighting capacity for the future.*

National Fire Protection Association (NFPA) - *An international nonprofit organization established in 1896, whose mission is to reduce the worldwide burden of fire and other hazards on the quality of life by providing and advocating consensus codes and standards, research, training, and education.*

National Wildfire Preparedness Day – *Started in 2014 by the National Fire Protection Association as a day for communities to work together to prepare for the approaching wildfire season. It is held annually on the first Saturday in May.*

Prescribed Burning (prescribed fire) –*The use of planned fire that is deliberately set under specific fuel and weather condition to accomplish a variety of management objectives and is under control until it burns out or is extinguished.*

Ready, Set, Go - *A program fire services use to help homeowners understand wildfire preparedness, awareness, and planning procedures for evacuation.*

Southern Group of State Foresters – *Organization whose members are the agency heads of the forestry agencies of the 13 southern states, Puerto Rico and the Virgin Islands.*

Stakeholders– *Individuals, groups, organizations, businesses or others who have an interest in wildland fire protection and may wish to review and/or contribute to the CWPP content.*

Wildfire or Wildland Fire – *An unplanned and uncontrolled fire spreading through vegetative fuels.*

Wildland/Urban Interface - *The presence of structures in locations in which the authority having jurisdiction (AHJ) determines that topographical features, vegetation, fuel types, local weather conditions and prevailing winds result in the potential for ignition of the structures within the area from flames and firebrands from a wildland fire (NFPA 1144, 2008).*

## XI. SOURCES OF INFORMATION

### Publications/Brochures/Websites:

- FIREWISE materials can be ordered at [www.firewise.org](http://www.firewise.org)
- Georgia Forestry Commission [www.georgiafirewise.org](http://www.georgiafirewise.org)
- Examples of successful wildfire mitigation programs can be viewed at the website for National Database of State and Local wildfire Hazard Mitigation Programs sponsored by the U.S. Forest Service and the Southern Group of State Foresters [www.wildfireprograms.com](http://www.wildfireprograms.com)
- Information about a variety of interface issues (including wildfire) can be found at the USFS website for Interface South: [www.interfacesouth.org](http://www.interfacesouth.org)
- Information on codes and standards for emergency services including wildfire can be found at [www.nfpa.org](http://www.nfpa.org)
- Information on FEMA Assistance to Firefighters Grants (AFG) can be found at [www.firegrantsupport.com](http://www.firegrantsupport.com)
- Information on National Fire Plan grants can be found at <http://www.federalgrantswire.com/national-fire-plan--rural-fire-assistance.html>
- Southern Wildfire Risk Assessment website SouthWRAP [www.SouthernWildfireRisk.com](http://www.SouthernWildfireRisk.com)
- Fire Adapted Communities [www.fireadapted.org](http://www.fireadapted.org)
- Ready, Set, Go [www.wildlandfirersg.org](http://www.wildlandfirersg.org)
- National Wildfire Preparedness Day [www.wildfireprepdays.org](http://www.wildfireprepdays.org)

### Appended Documents:

Johnson County Southern Wildfire Risk Assessment Summary Report (SWRA)

Johnson County Wildfire assessment scoresheets

All files that make up this plan are available in an electronic format from the Georgia Forestry Commission.



**Georgia Forestry Commission**  
5645 Riggins Mill Rd.  
Dry Branch, GA 31020

**1-800-GA-TREES**  
**[www.GaTrees.org](http://www.GaTrees.org)**

*The Georgia Forestry Commission provides leadership, service, and education in the protection and conservation of Georgia's forest resources.*

*An Equal Opportunity Employer and Service Provider*

