



# **Community Wildfire Protection Plan** *An Action Plan for Wildfire Mitigation and Conservation of Natural Resources* **Screven County, Georgia**

---

A Program of the Georgia Forestry Commission  
with support from the U.S. Forest Service



JULY 2019

Prepared by;  
Rick Lane, Chief Ranger, Screven County  
Will Fell, CWPP Specialist (Initial plan 2010)  
Beryl Budd, Wildfire Prevention Specialist (Revised plan 2019)

Georgia Forestry Commission  
862 Buttermilk Rd  
Sylvania, GA 30467

The following report is a collaborative effort among various entities; the representatives listed below comprise the core decision-making team responsible for this report and mutually agree on the plan's contents:

Rick Jordan  
County Manager  
Screven County  
(912) 564-7535  
[comgr@screvencounty.org](mailto:comgr@screvencounty.org)

Will Boyd  
Chair, Screven County Board of Commissioners  
(912) 564-7535

Harvey Cryder  
Fire Chief/EMA Director, Screven County  
(912) 564-2709  
[fire1scfd@windstream.net](mailto:fire1scfd@windstream.net)

Shane Burke  
Chief of Police and Fire Services  
City of Sylvania  
(912) 564-2055  
[sylvaniadps@windstream.net](mailto:sylvaniadps@windstream.net)

Rick Lane  
Chief Ranger, Screven County Forestry Unit  
Georgia Forestry Commission  
(912) 564-7721  
[rlane@gfc.state.ga.us](mailto:rlane@gfc.state.ga.us)

## **PLAN CONTENTS**

|   |    |
|---|----|
| I. Objectives .....   | 4  |
| II. Community Collaboration.....                              | 4  |
| III. Community & Wildfire History.....                        | 5  |
| IV. Community Base Maps.....                                  | 12 |
| V. Community Wildfire Risk Assessment.....                    | 15 |
| VI. Southern Wildfire Risk Assessment & Risk Hazard Maps..... | 17 |
| VII. Prioritized Mitigation Recommendations.....              | 23 |
| VIII. Action Plan.....  | 28 |
| IX. Mitigation Assistance & Grant Information.....            | 31 |
| X. Glossary.....  | 32 |
| XI. Sources of Information.....                               | 34 |

### Appended Documents:

Screven County Southern Wildfire Risk Assessment Summary Report

Screven County Wildfire Pre-suppression Plan

NFPA 1141 Standard for Fire Protection Infrastructure for Land Development in Suburban and Rural Areas.

---

## I. OBJECTIVES

The mission of the following report is to set clear priorities for the implementation of wildfire mitigation in Screven County. The plan includes prioritized recommendations for the appropriate types and methods of fuel reduction and structure ignitability reduction that will protect this community and its essential infrastructure. It also includes a plan for wildfire suppression. Specifically, the plan includes community-centered actions that will:

- Educate citizens on wildfire, its risks, and ways to protect lives and properties,
- Support fire rescue and suppression entities,
- Focus on collaborative decision-making and citizen participation,
- Develop and implement effective mitigation strategies, and
- Develop and implement effective community ordinances and codes.

## II. COMMUNITY COLLABORATION

The core team convened on March 25<sup>th</sup>, 2009 to assess risks and develop the Community Wildfire Protection Plan. The group is comprised of representatives from local government, local fire authorities, and the state agency responsible for forest management. Below are the groups included in the task force:

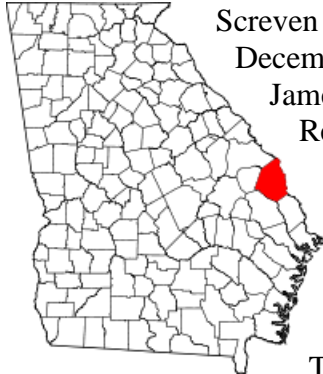
Screven County Government  
*County Volunteer Fire Departments*  
*Emergency Management*  
*Board of County Commissioners*  
City of Sylvania  
*Sylvania Fire Department,*  
Georgia Forestry Commission

It was decided to conduct community assessments on the basis of the individual fire districts in the county. The chiefs of the ten fire departments in the county assessed their districts and reconvened on Oct. 16<sup>th</sup>, 2009 for the purpose of completing the following:

|                        |   |
|------------------------|---|
| Risk Assessment        | Assessed wildfire hazard risks and prioritized mitigation actions.  |
| Fuels Reduction        | Identified strategies for coordinating fuels treatment projects.  |
| Structure Ignitability | Identified strategies for reducing the ignitability of structures within the Wildland interface.                          |
| Emergency Management   | Forged relationships among local government and fire districts and developed/refined a pre-suppression plan.              |
| Education and Outreach | Developed strategies for increasing citizen awareness and action and to conduct homeowner and community leader workshops. |

---

### III. COMMUNITY & WILDFIRE HISTORY



Screven County, located in the Coastal Plain of Georgia, was created on December 14, 1793, as the state's fourteenth county. It was named for General James Screven, who served as a commander in Savannah during the Revolutionary War (1775-83) and was a veteran of the Battle of the Riceboats. The county was carved out of the lower part of Burke County and the upper part of Effingham County, and originally included Bulloch County and parts of Emanuel and Jenkins counties. Rocky Ford was designated as the first county seat in 1793 but was replaced by Jacksonborough in 1797.

The original inhabitants of the area were Yuchi Indians. The first European settlers of Screven County were Germans who arrived in 1751. They were followed two years later by native-born American settlers who came mainly from the Carolinas and Virginia. In 1763, at the Southern Indian District Congress in Augusta, the Indians ceded the land between the Savannah River and the Ogeechee River. When the American Revolution began, what would later become Screven County was divided between St. Mathew Parish and St. George Parish.



The county government was originally situated in Jacksonborough but moved to Sylvania by an act of the state legislature in 1847. The act authorized the commissioners to make a plat of the town and sell the lots not needed for public buildings and parks to provide funds for a new courthouse and jail. The reason for moving the county seat is unclear but, according to legend, may be the result of a curse placed on the town by Lorenzo Dow, a Methodist preacher who was treated badly while visiting Jacksonborough.

The Battle of Briar Creek in 1779 was a major event in Screven County's history. Although American forces lost the battle, it is believed to have been a critical campaign during the Revolution. Another major event occurred in 1791, when U.S. president George Washington visited the area as part of his mission to travel to all thirteen existing states.

Prominent residents of Screven County have included Edward Junius Black, who was elected to the U.S. House of Representatives in 1839; J. R. McKinney, Georgia's most decorated hero of World War II (1941-45); and Bucky Dent, the Major League Baseball legend and Most Valuable Player in the 1978 World Series.

Screven County claims a number of interesting sites: one of the nation's largest persimmon trees, located in the Tuckahoe Wildlife Management Area; Robbin's Grist Mill, built in 1803 and located south of Sylvania; Millhaven Plantation, one of the largest farms east of the Mississippi River; and the artesian wells at Rocky Ford. The first Georgia visitors' center was built in Screven County in 1962.

In 1905 Jenkins County was created out of portions of Screven, Burke, Bulloch, and Emanuel counties, leaving Screven with an area of 648 square miles. According to the 2000 census, the population of Screven County was 15,374 (53.6 percent white and 45.3 percent black).

(Courtesy Jocelyn Poole *New Georgia Encyclopedia*)

---

## **Wildfire History**

Screven County located on the Savannah River in southeast Georgia, despite its well known agricultural presence, is still over 75% forested. With the exception of the large block of woodlands along the Savannah and Ogeechee Rivers, there are homes and communities scattered throughout the county. The risks and hazards from the wildland urban interface are fairly general and substantial throughout the county even on the edges of the incorporated towns of Sylvania, Hiltonia, Newington, Rocky Ford and Oliver.

Screven County is protected by organized fire departments within the five incorporated towns and six widely spaced volunteer fire departments in the unincorporated areas, Headquarters, Jenk Hill, Bay Branch, Jackson, Cooperville and White Hill. The Georgia Forestry Commission maintains a county protection unit located just off Hwy 301 on the northwest side of Sylvania on Buttermilk Rd to respond to wildfires throughout the county. The five incorporated cities and the adjacent areas of the county are serviced by a pressurized water system with well placed hydrants throughout.

Over the past fifty years, Screven County has averaged 85 reported wildland fires per year. The occurrence of these fires shows a pronounced peak in the four months from January through April and a slight decrease during the late summer months. These fires have burned an average of 455 acres annually. The monthly acreage burned fairly well corresponds with the number of fires. Over the past 10 years, 2009-2019, the annual numbers of fires and acres burned have dropped to 44 fires burning an average of 298 acres a year. This reduction in wildfires is perhaps the result of better response and equipment from both the Georgia Forestry Commission and the increased presence of rural fire departments. Despite this welcome trend in fire behavior, more homes are being built outside of traditional communities into the wildland urban interface.

The leading causes of these fires, over the past 10 years, was debris burning causing 44% of the fires and 42% of the acres burned. Machine use was the 2<sup>nd</sup> leading cause of these fires causing 18% of the fires and 9% of the acres burned. Incendiary caused (arson) fires were also a significant cause accounting for 11% of the fires and 13% of the acres burned during these years. Over the past ten years records show that over 45% of the debris fires originated from residential burning.

Georgia Forestry Commission Wildfire Records show that in the past five years, FY2015-FY2019, 3 homes have been lost or damaged by wildfire in Screven County resulting in estimated losses of \$50,000 along with six outbuildings valued at \$38,500. According to reports during this period 28 homes have been directly or indirectly threatened by these fires. Additionally five vehicles valued at \$24,500 and seven other pieces of mechanized equipment valued at \$85,000 were lost. There was also additionally estimated \$2600 damage to crops. This is a substantial loss of non-timber property attributed to wildfires in Screven County.

**Scriven County wildfire information for the last complete fiscal year, July 1, 2018 – June 30, 2019.**

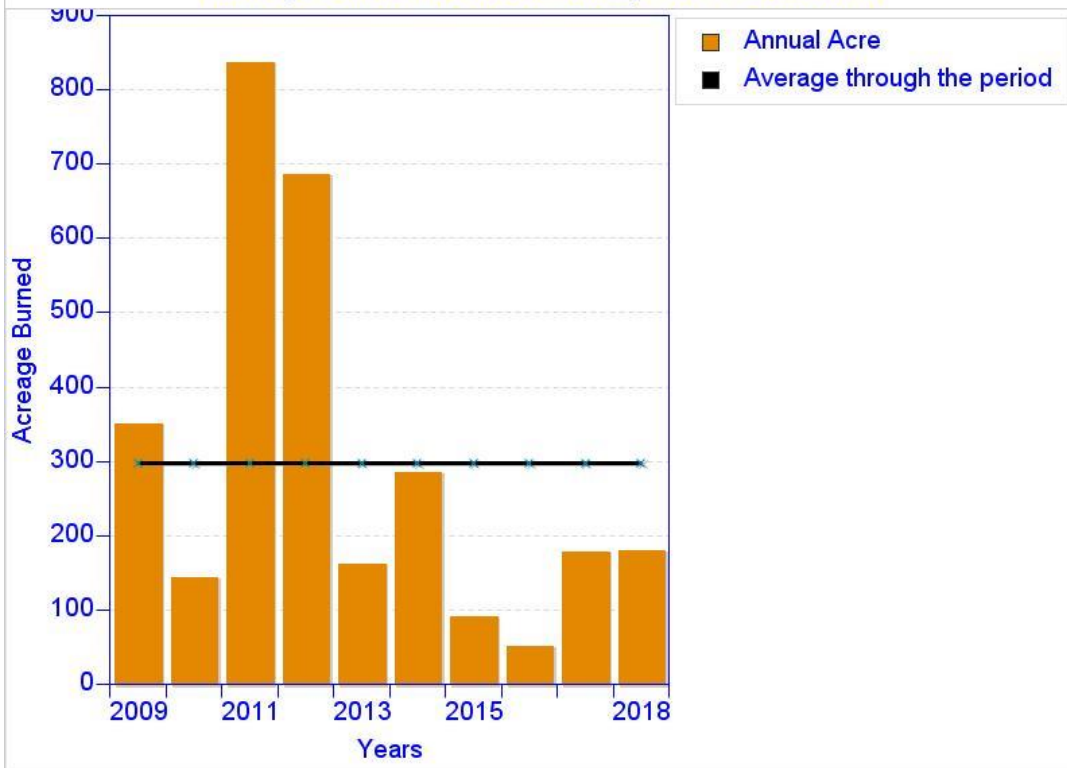
| County = Scriven  | Cause   | Fires | Acres  | Fires<br>5 Yr<br>Avg | Acres<br>5 Yr<br>Avg |
|---|---|-------|--------|----------------------|----------------------|
| <a href="#">Campfire</a>                                      | Campfire                                      | 0     | 0.00   | 0.80                 | 1.52                 |
| <a href="#">Children</a>                                      | Children                                      | 1     | 2.00   | 0.40                 | 8.80                 |
| <a href="#">Debris: Ag Fields, Pastures, Orchards, Etc</a>    | Debris: Ag Fields, Pastures, Orchards, Etc    | 0     | 0.00   | 1.00                 | 3.72                 |
| <a href="#">Debris: Construction Land Clearing</a>            | Debris: Construction Land Clearing            | 0     | 0.00   | 0.80                 | 1.78                 |
| <a href="#">Debris: Escaped Prescribed Burn</a>               | Debris: Escaped Prescribed Burn               | 5     | 56.65  | 4.00                 | 43.87                |
| <a href="#">Debris: Household Garbage</a>                     | Debris: Household Garbage                     | 1     | 2.70   | 0.40                 | 1.00                 |
| <a href="#">Debris: Residential, Leafpiles, Yard, Etc</a>     | Debris: Residential, Leafpiles, Yard, Etc     | 5     | 18.05  | 3.40                 | 14.49                |
| <a href="#">Debris: Site Prep - Forestry Related</a>          | Debris: Site Prep - Forestry Related          | 3     | 30.20  | 1.60                 | 9.78                 |
| <a href="#">Incendiary</a>                                    | Incendiary                                    | 2     | 11.60  | 3.00                 | 22.56                |
| <a href="#">Lightning</a>                                     | Lightning                                     | 5     | 89.18  | 1.80                 | 21.88                |
| <a href="#">Machine Use</a>                                   | Machine Use                                   | 3     | 7.26   | 2.20                 | 5.54                 |
| <a href="#">Miscellaneous: Other</a>                          | Miscellaneous: Other                          | 0     | 0.00   | 0.60                 | 0.85                 |
| <a href="#">Miscellaneous: Power lines/Electric fences</a>    | Miscellaneous: Power lines/Electric fences    | 0     | 0.00   | 1.40                 | 4.48                 |
| <a href="#">Miscellaneous: Spontaneous Heating/Combustion</a> | Miscellaneous: Spontaneous Heating/Combustion | 1     | 2.80   | 0.20                 | 0.56                 |
| <a href="#">Miscellaneous: Structure/Vehicle Fires</a>        | Miscellaneous: Structure/Vehicle Fires        | 0     | 0.00   | 0.60                 | 0.63                 |
| <a href="#">Miscellaneous: Woodstove Ashes</a>                | Miscellaneous: Woodstove Ashes                | 0     | 0.00   | 0.20                 | 0.05                 |
| <a href="#">Railroad</a>                                      | Railroad                                      | 0     | 0.00   | 0.40                 | 0.98                 |
| <a href="#">Smoking</a>                                       | Smoking                                       | 1     | 0.10   | 0.40                 | 0.47                 |
| <a href="#">Undetermined</a>                                  | Undetermined                                  | 1     | 0.50   | 1.60                 | 2.14                 |
| <b>Totals for County: Scriven Year: 2019</b>                  |   | 28    | 221.04 | 24.80                | 145.10               |

| <b>Acreage Burned /Number of Fires<br/>For Screven County<br/>For FY 2009-2018</b> |                       |                            |                         |                                   |
|--|-----------------------|----------------------------|-------------------------|-----------------------------------|
| <b>Year</b>  | <b>Acreage Burned</b> | <b>Number of<br/>Fires</b> | <b>Average<br/>Size</b> | <b>Statewide<br/>Average Size</b> |
| 2009   | 351.71                | 62                         | 5.66                    | 3.90                              |
| 2010   | 144.72                | 41                         | 7.01                    | 3.93                              |
| 2011   | 838.81                | 132                        | 7.61                    | 17.56                             |
| 2012   | 687.05                | 45                         | 6.74                    | 5.08                              |
| 2013   | 163.01                | 36                         | 14.37                   | 4.53                              |
| 2014   | 286.85                | 31                         | 11.94                   | 5.02                              |
| 2015   | 91.65                 | 18                         | 7.03                    | 4.42                              |
| 2016   | 52.17                 | 19                         | 3.90                    | 6.29                              |
| 2017   | 179.94                | 38                         | 4.15                    | 11.60                             |
| 2018   | 180.71                | 21                         | 8.61                    | 5.25                              |

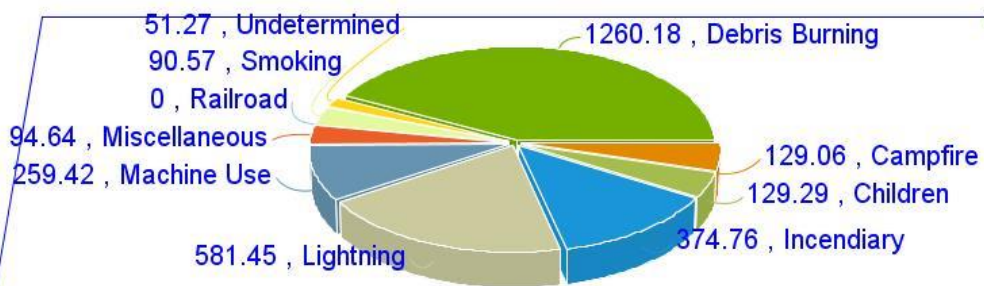
| <b>Acreage Burned /Number of Fires by Fire Cause<br/>For Screven County<br/>For FY 2009-2018</b> |                           |                            |
|--|---------------------------|----------------------------|
| <b>Fire Cause</b>  | <b>Acreage<br/>Burned</b> | <b>Number of<br/>Fires</b> |
| Campfire   | 129.06                    | 17                         |
| Children   | 129.29                    | 14                         |
| Debris Burning   | 1,260.18                  | 192                        |
| Incendiary   | 374.76                    | 49                         |
| Lightning  | 581.45                    | 29                         |
| MachineUse   | 259.42                    | 81                         |
| Miscellaneous  | 94.64                     | 38                         |
| Railroad   | 0.00                      | 0                          |
| Smoking  | 90.57                     | 10                         |
| Undetermined   | 51.27                     | 10                         |
| <b>Total</b>   | <b>2,970.64</b>           | <b>440</b>                 |



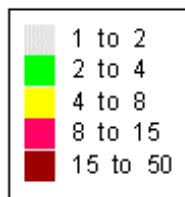
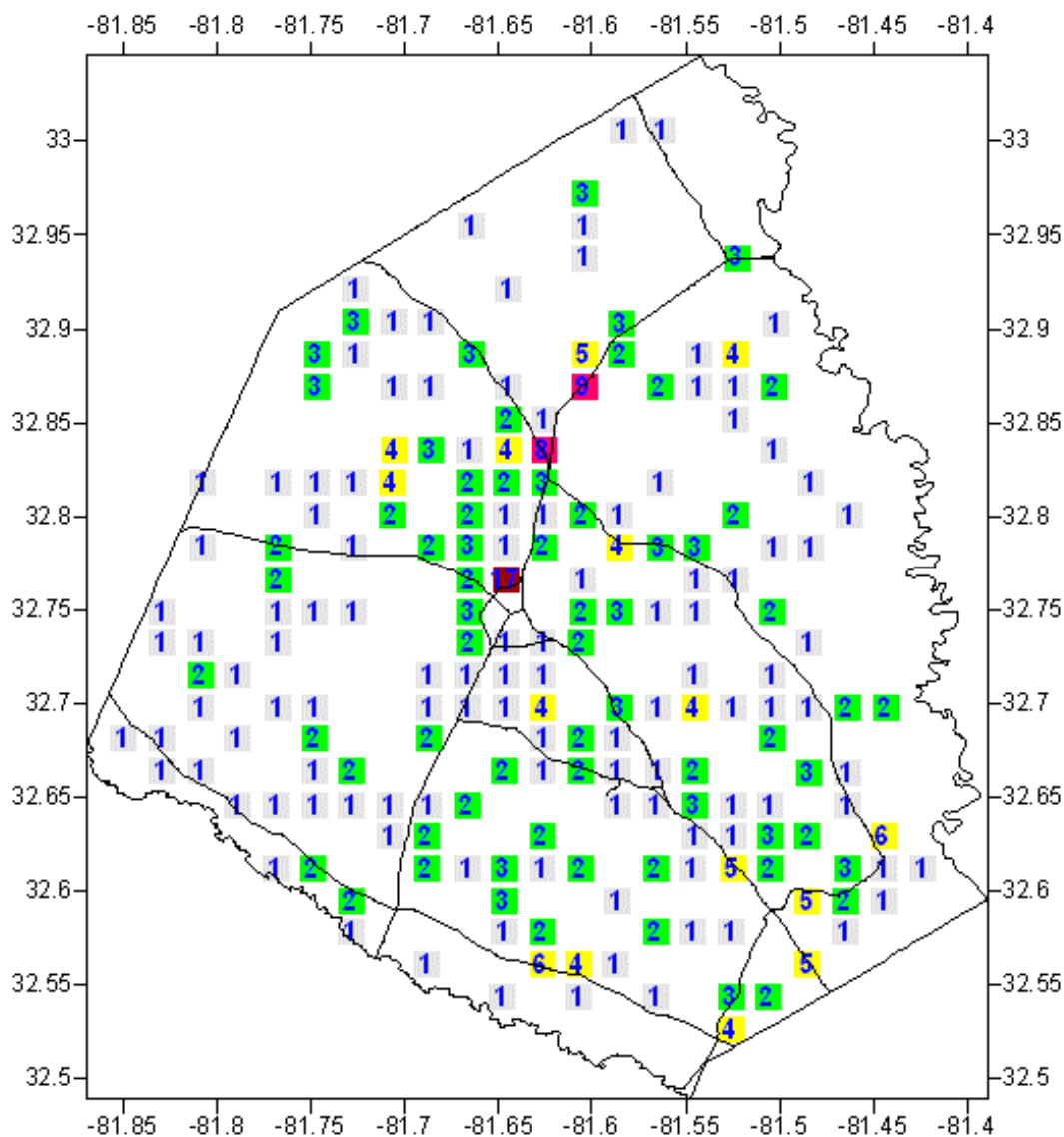
Acreage Burned For Screven County For FY 2009-2018



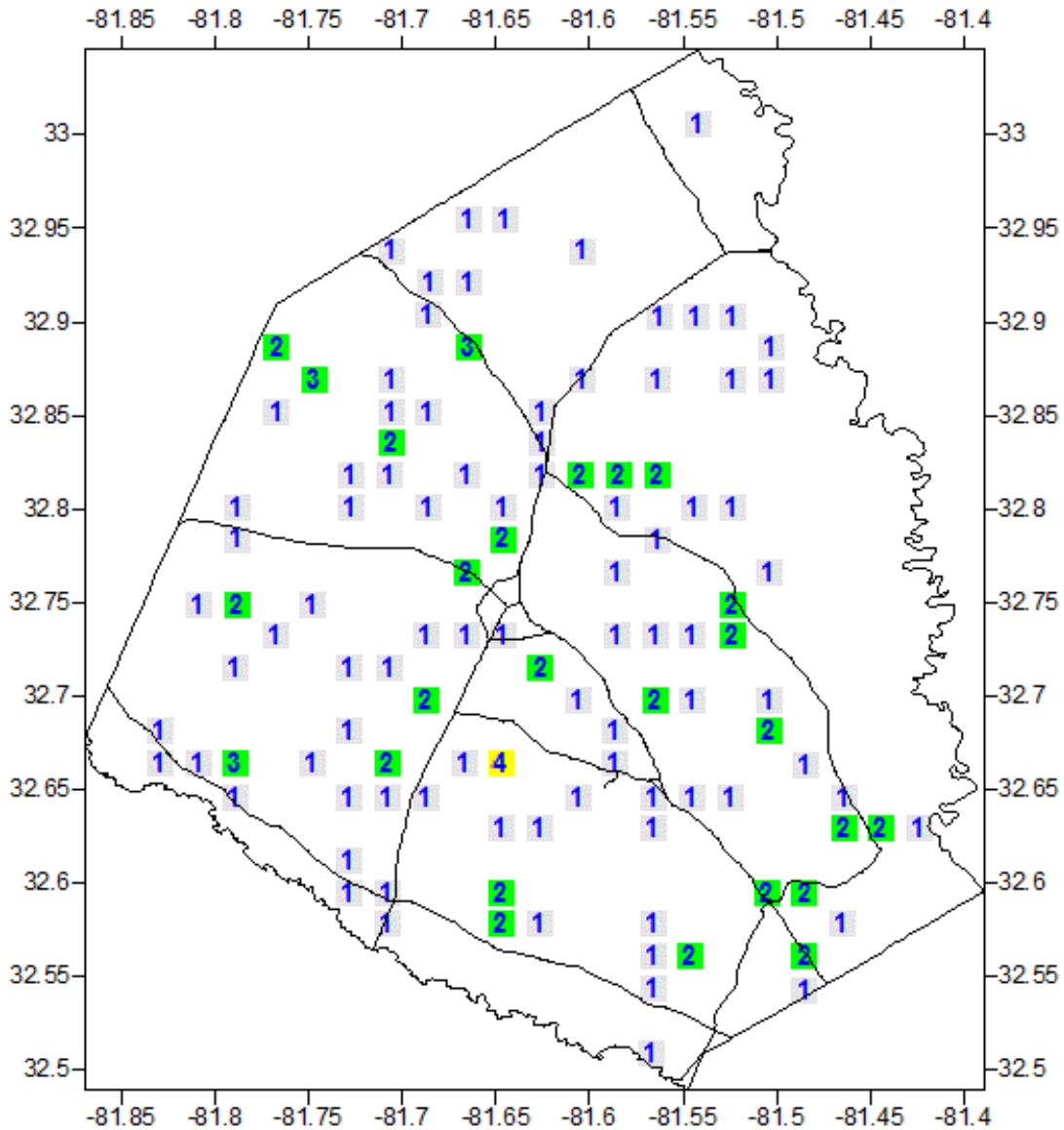
Acreage Burned by Cause of Fire For Screven County For FY 2009-2018



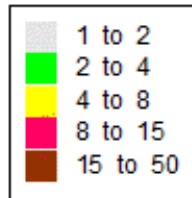
# Fire Occurrence Map for Screven County for Fiscal Year 2007-2011



# Fire Occurrence Map for Screven County for Fiscal Year 2012-2016



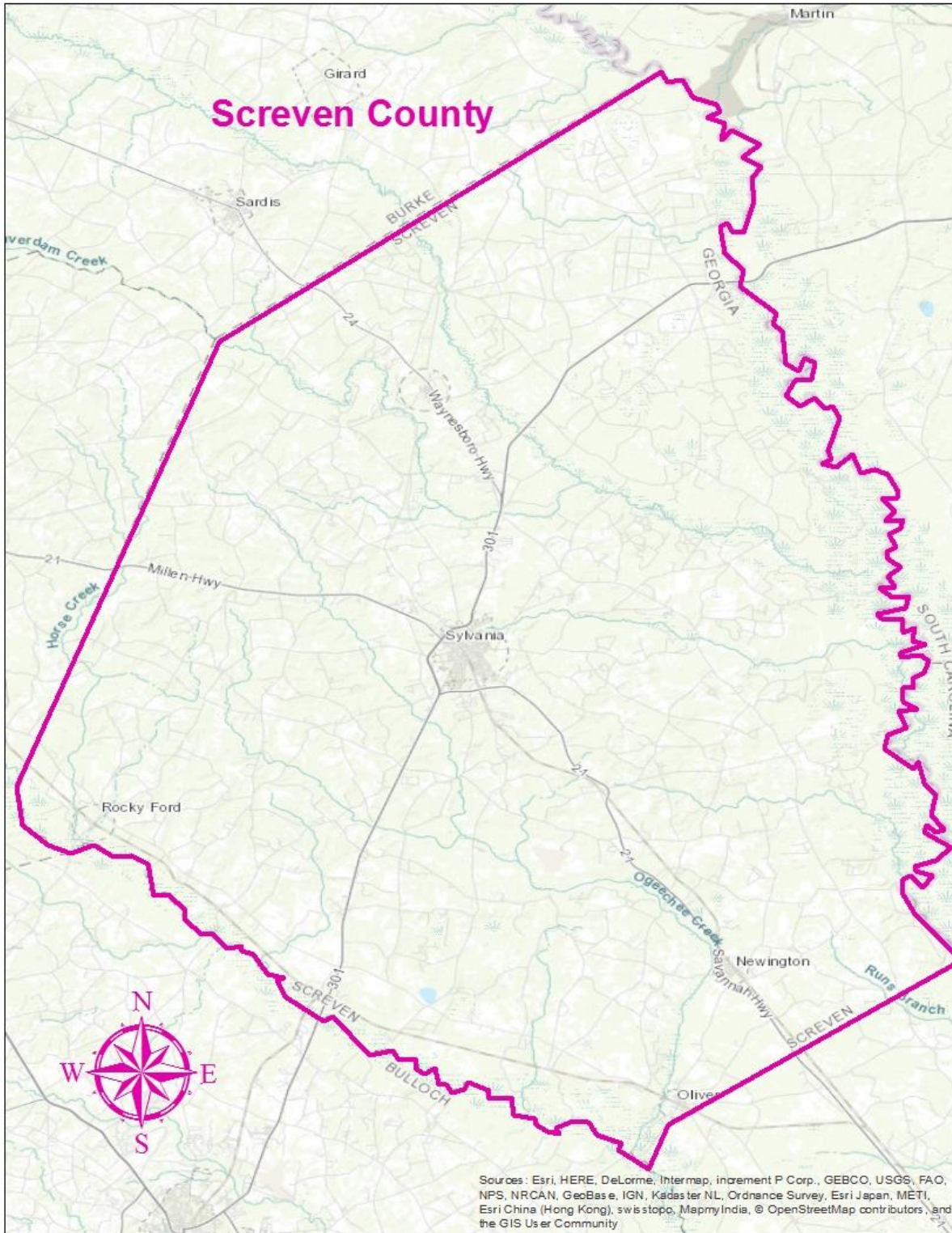
GEORGIA FORESTRY  
COMMISSION

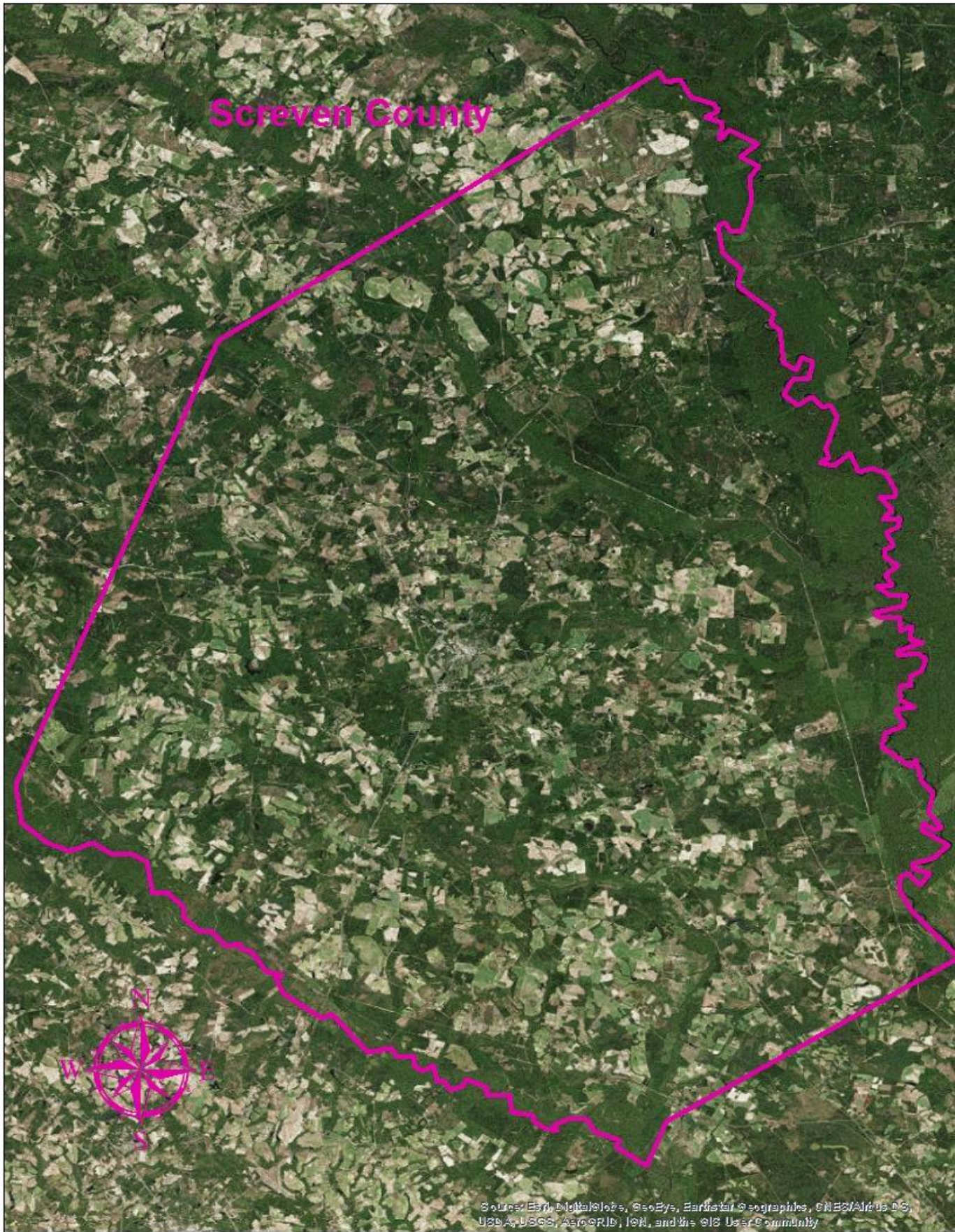


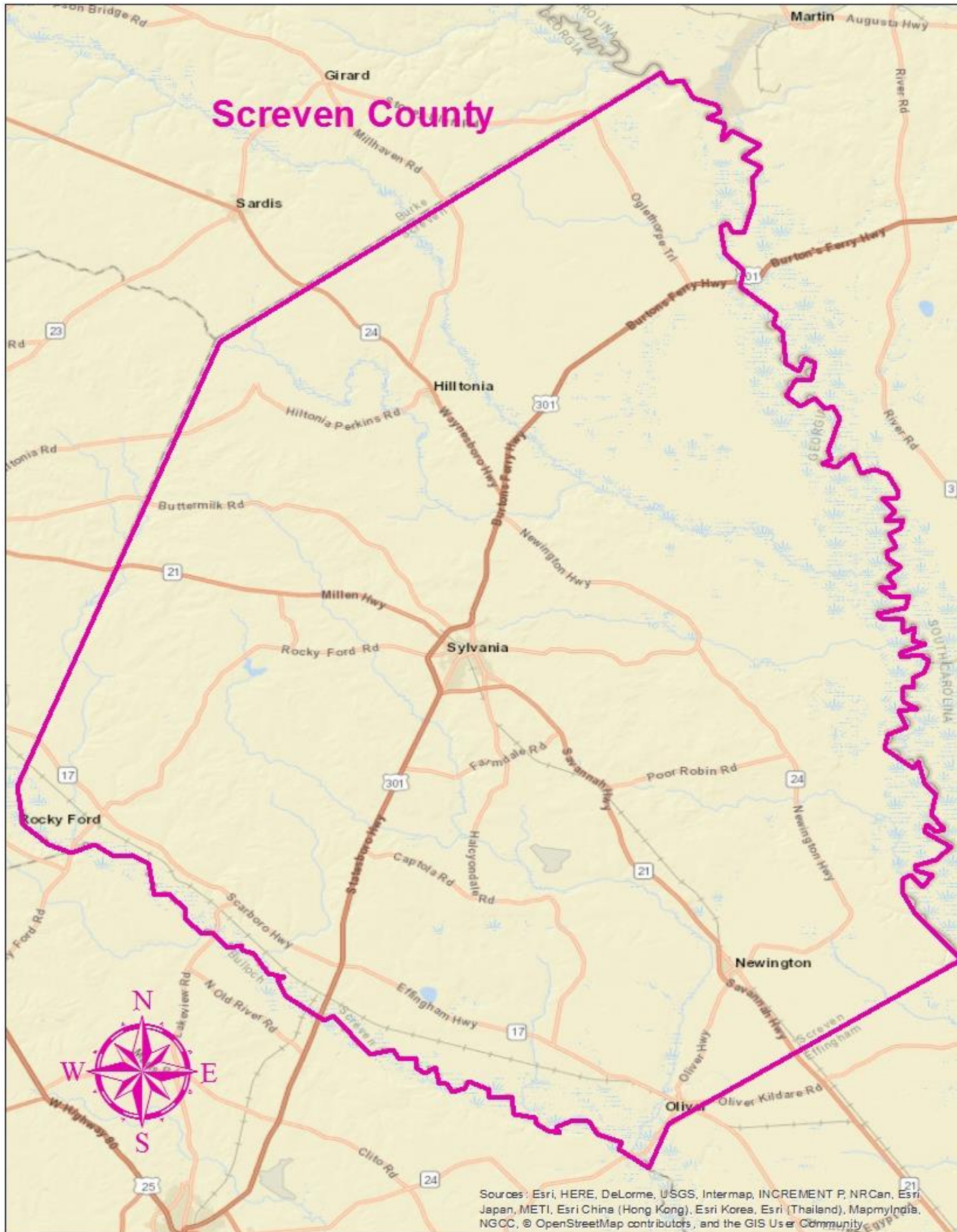
GEORGIA FORESTRY  
COMMISSION



## IV. COMMUNITY BASEMAPS







---

## V. COMMUNITY WILDFIRE RISK ASSESSMENT

### The Wildland-Urban Interface

There are many definitions of the Wildland-Urban Interface (WUI), however from a fire management perspective it is commonly defined as an area where structures and other human development meet or intermingles with undeveloped wildland or vegetative fuels. As fire is dependent on a certain set of conditions, the National Wildfire Coordinating Group has defined the wildland-urban interface as a set of conditions that exists in or near areas of wildland fuels, regardless of ownership. This set of conditions includes type of vegetation, building construction, accessibility, lot size, topography and other factors such as weather and humidity. When these conditions are present in certain combinations, they make some communities more vulnerable to wildfire damage than others. This “set of conditions” method is perhaps the best way to define wildland-urban interface areas when planning for wildfire prevention, mitigation, and protection activities.

There are three major categories of wildland-urban interface. Depending on the set of conditions present, any of these areas may be at risk from wildfire. A wildfire risk assessment can determine the level of risk.

1. **“Boundary” wildland-urban interface** is characterized by areas of development where homes, especially new subdivisions, press against public and private wildlands, such as private or commercial forest land or public forests or parks. This is the classic type of wildland-urban interface, with a clearly defined boundary between the suburban fringe and the rural countryside.
2. **“Intermix” wildland-urban interface** areas are places where improved property and/or structures are scattered and interspersed in wildland areas. These may be isolated rural homes or an area that is just beginning to go through the transition from rural to urban land use.
3. **“Island” wildland-urban interface**, also called occluded interface, are areas of wildland within predominately urban or suburban areas. As cities or subdivisions grow, islands of undeveloped land may remain, creating remnant forests. Sometimes these remnants exist as parks, or as land that cannot be developed due to site limitations, such as wetlands.



**Wildland Urban Interface (WUI) is described as the area where structures and other human improvements meet and intermingle with undeveloped wildland or vegetative fuels.**

---

The wildland fire risk assessments conducted in 2009 by the Screven County Fire Departments returned an average score of 82, placing Screven County in the “moderate” hazard range. The risk assessment instrument used to evaluate wildfire hazards to Screven County’s WUI was the Woodland Community Wildfire Hazard Assessment. The instrument takes into consideration accessibility, vegetation (based on fuel models), roofing assembly, building construction, and availability of fire protection resources, placement of gas and electric utilities, and additional rating factors. The following factors contributed to the wildfire hazard score for Screven County:

- Dead end roads with inadequate turn arounds
- Narrow roads without drivable shoulders
- Minimal defensible space around structures
- Homes with wooden siding and roofs with heavy accumulations of vegetative debris
- No pressurized or non-pressurized water systems available
- Above ground utilities
- Large, adjacent areas of forest or wildlands
- Undeveloped lots comprising half the total lots in many rural communities.
- High occurrence of wildfires in the several locations
- Lack of homeowner or community organizations

**Summary of Screven County Assessment Ratings:**

| Fire District | Community Design | Site Hazard | Bldg Construction | Additional Factors | Score | Hazard Rating |
|---------------|------------------|-------------|-------------------|--------------------|-------|---------------|
| Sylvania      | 6                | 21          | 10                | 2                  | 39    | Low           |
| Headquarters  | 7                | 43          | 5                 | 37                 | 92    | Moderate      |
| Jenk Hill     | 7                | 40          | 5                 | 34                 | 86    | Moderate      |
| Cooperville   | 7                | 38          | 5                 | 34                 | 84    | Moderate      |
| Hiltonia      | 8                | 45          | 5                 | 32                 | 90    | Moderate      |
| Rocky Ford    | 8                | 45          | 5                 | 32                 | 90    | Moderate      |
| Jackson       | 7                | 38          | 5                 | 34                 | 84    | Moderate      |
| Bay Branch    | 7                | 40          | 5                 | 34                 | 86    | Moderate      |
| White Hill    | 7                | 38          | 4                 | 34                 | 84    | Moderate      |

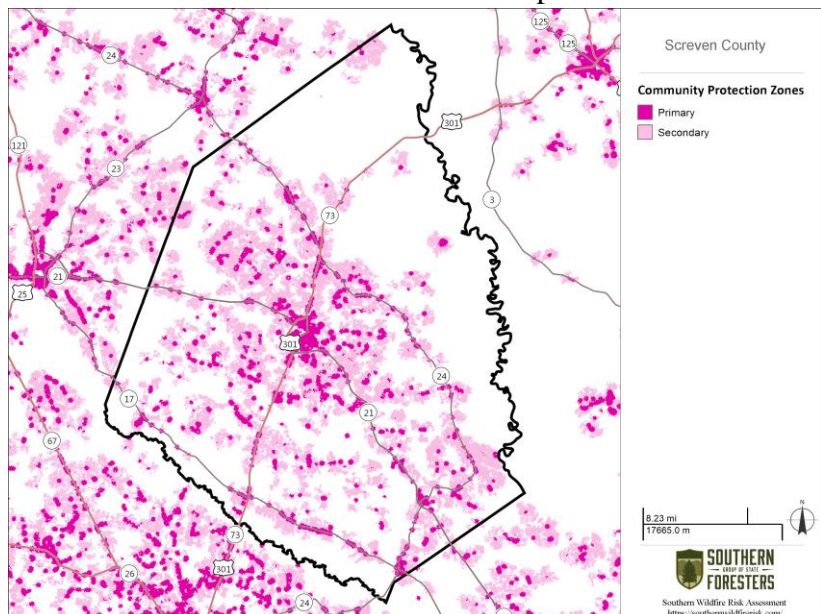


---

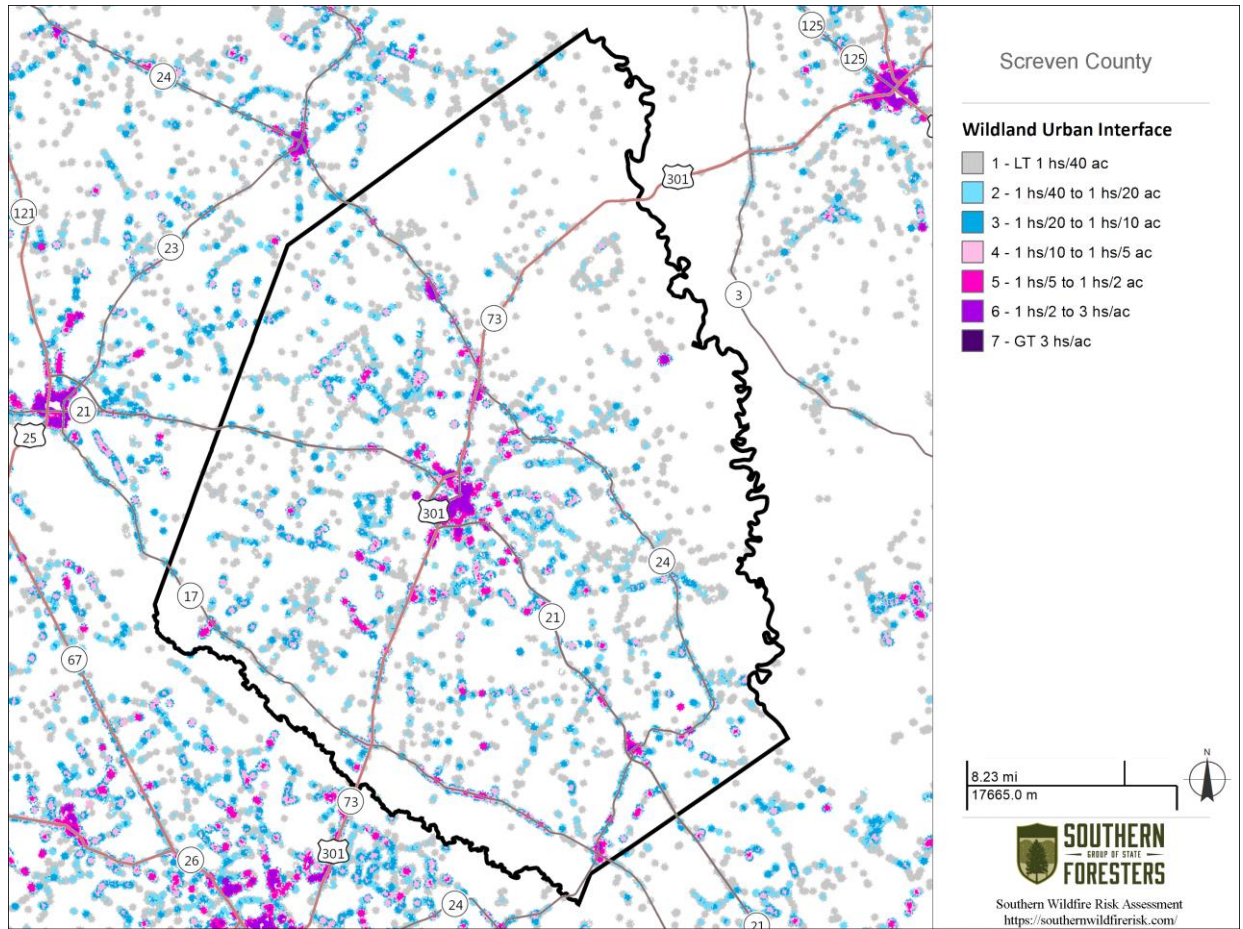
## VI. SOUTHERN WILDFIRE RISK ASSESSMENT & RISK HAZARD MAPS

The Southern Wildfire Risk Assessment tool, developed by the Southern Group of State Foresters, was released to the public in July 2014. This tool allows users of the Professional Viewer application of the Southern Wildfire Risk Assessment (SWRA) web Portal (SouthWRAP) to define a specific project area and summarize wildfire related information for this area. A detailed risk summary report is generated using a set of predefined map products developed by the Southern Wildfire Risk Assessment project which have been summarized explicitly for the user defined project area. A risk assessment summary was generated for Screven County. The SouthWRAP (SWRA) products included in this report are designed to provide the information needed to support the following key priorities:

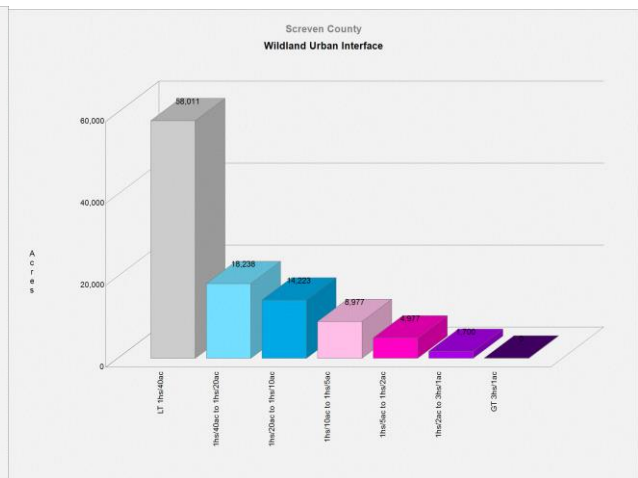
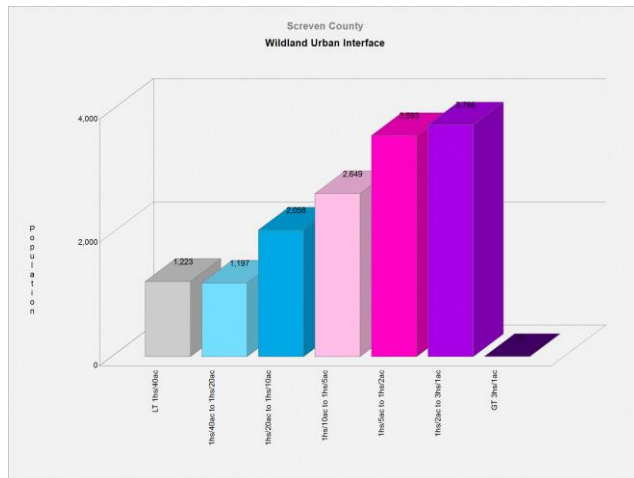
- Identify areas that are most prone to wildfire.
- Identify areas that may require additional tactical planning, specifically related to mitigation projects and Community Wildfire Protection Planning.
- Provide the information necessary to justify resource, budget and funding requests.
- Allow agencies to work together to better define priorities and improve emergency response, particularly across jurisdictional boundaries.
- Define wildland communities and identify the risk to those communities.
- Increase communication and outreach with local residents and the public to create awareness and address community priorities and needs.
- Plan for response and suppression resource needs.
- Plan and prioritize hazardous fuel treatment programs.

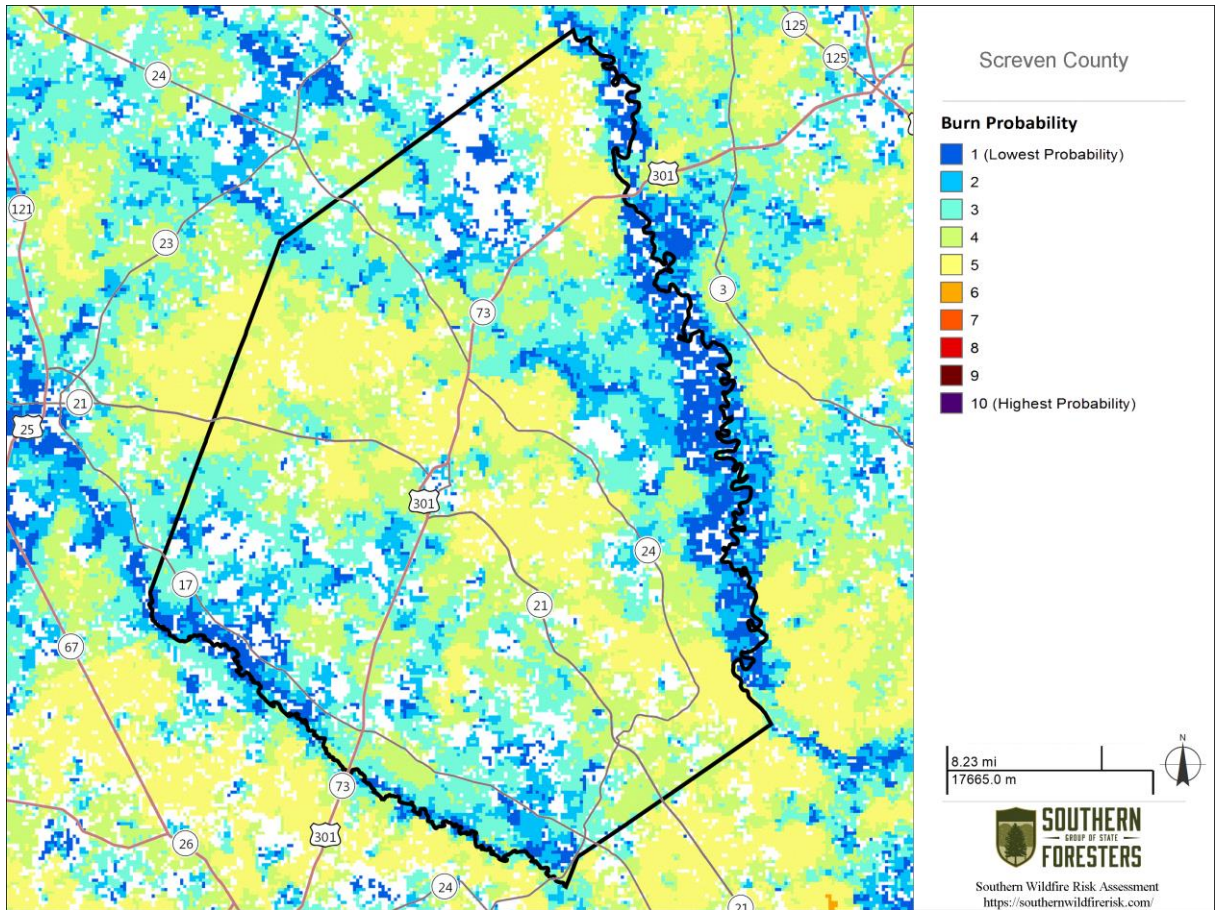


Community Protection Zones map from the Screven County SWRA

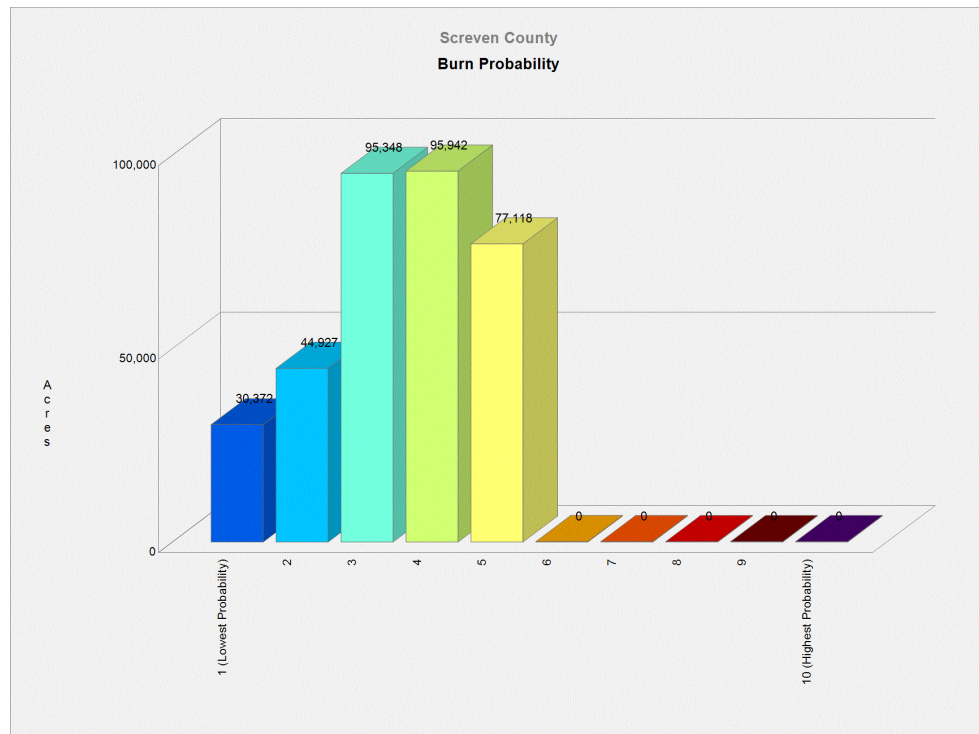


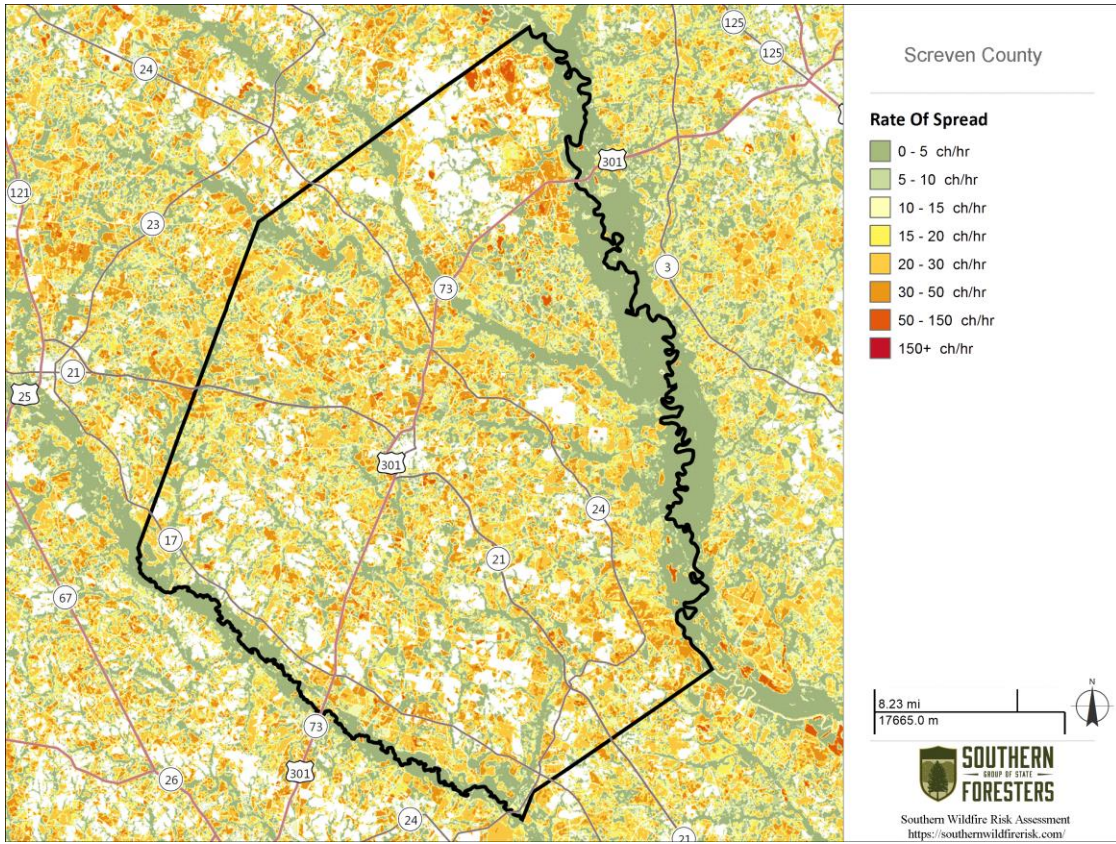
**Above: Wildland Urban Interface (WUI) map**  
**Below: WUI Acres (left) WUI Population (right)**



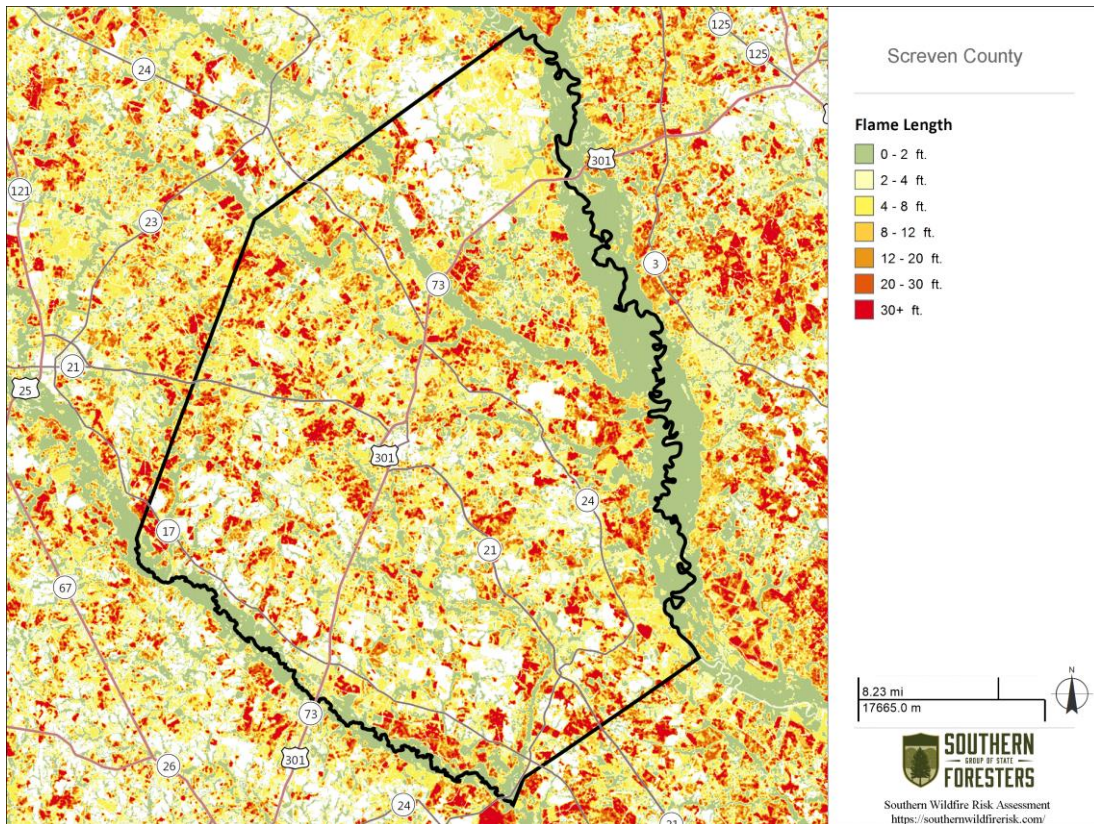


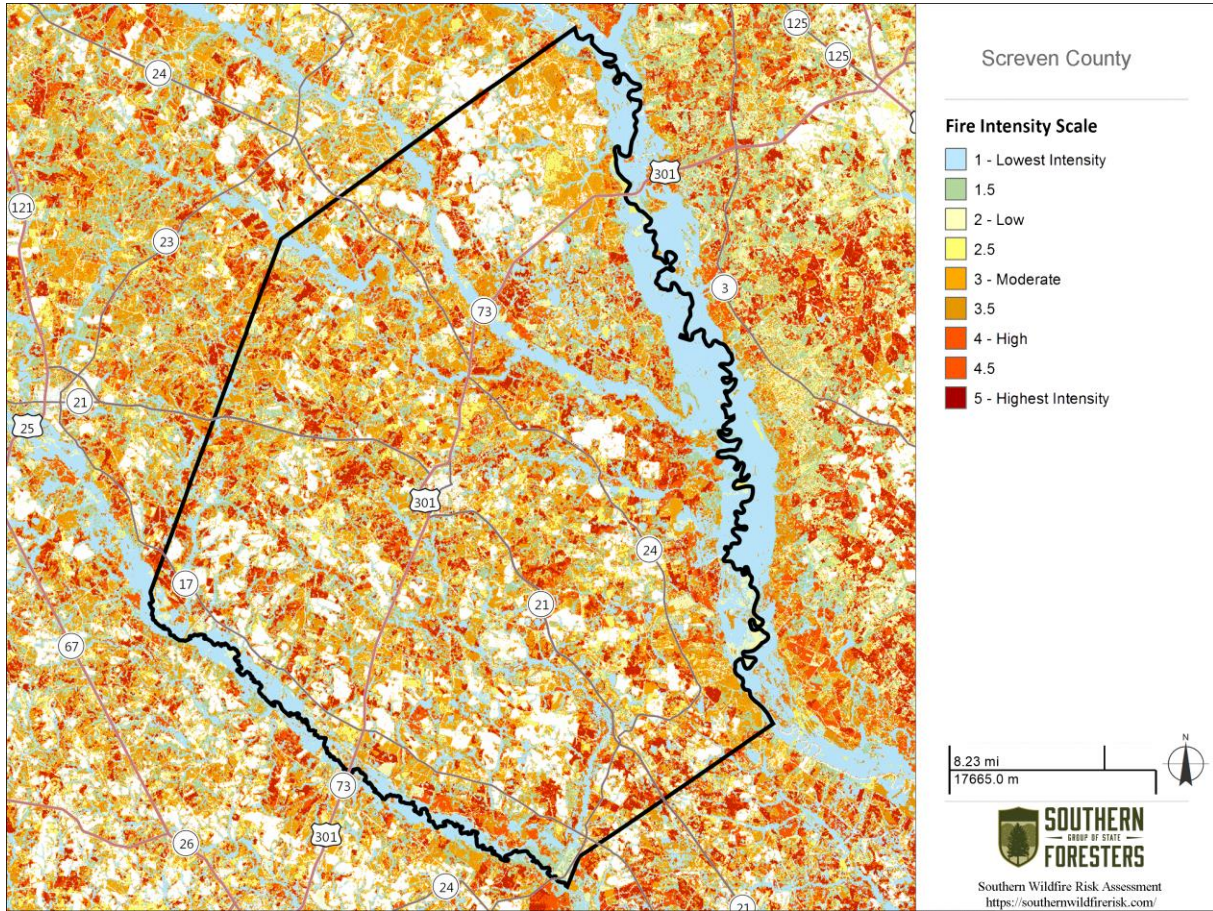
**Above: Burn Probability map    Below: Burn Probability Acres**



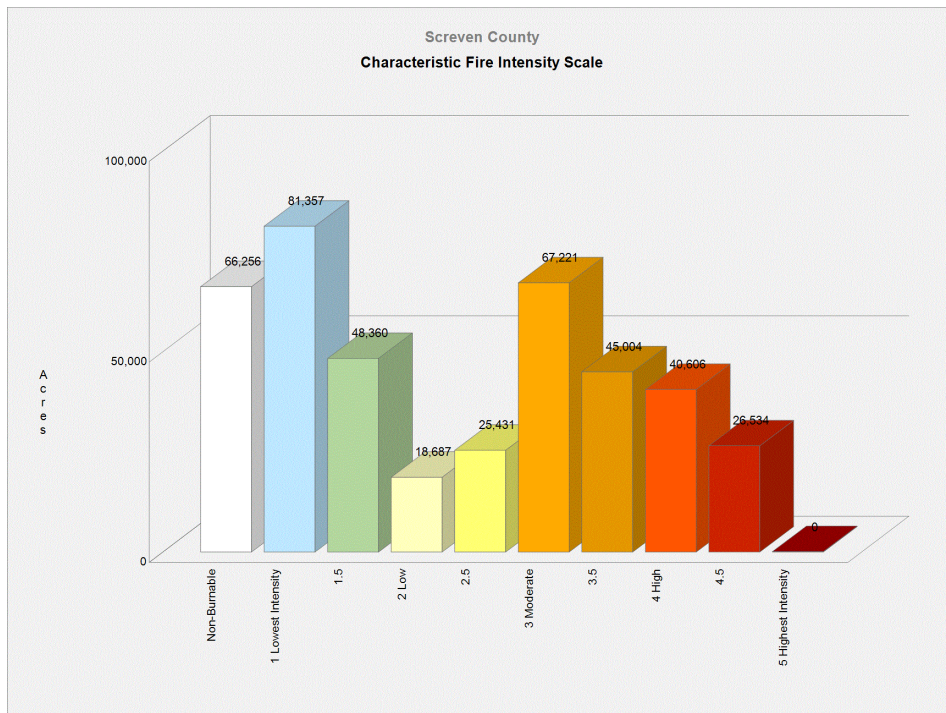


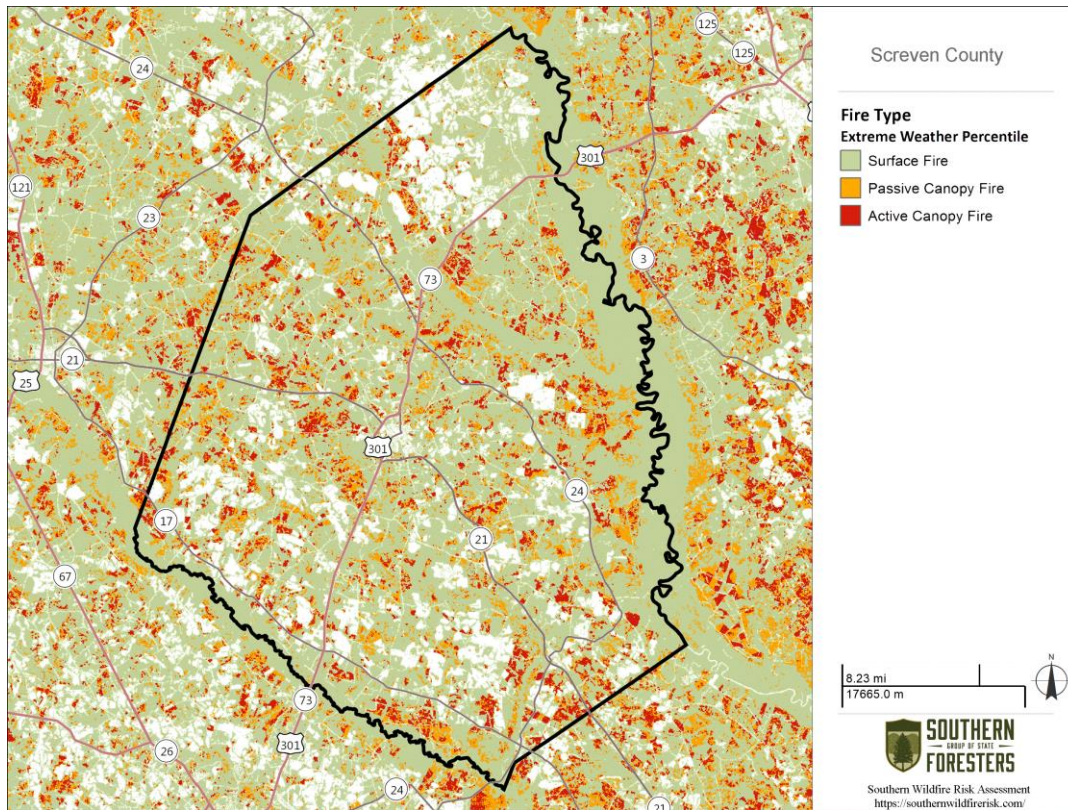
Above: Rate of Spread map    Below: Flame Length map





**Above: Fire Intensity Scale    Below: Fire Intensity Scale Acres**





There are two primary fire types – surface fire and canopy fire. Canopy fire can be further subdivided into passive canopy fire and active canopy fire. A short description of each of these is provided below.

**Surface Fire**

A fire that spreads through surface fuel without consuming any overlying canopy fuel. Surface fuels include grass, timber litter, shrub/brush, slash and other dead or live vegetation within about 6 feet of the ground.



**Passive Canopy Fire**

A type of crown fire in which the crowns of individual trees or small groups of trees burn, but solid flaming in the canopy cannot be maintained except for short periods (Scott & Reinhardt, 2001).



**Active Canopy Fire**

A crown fire in which the entire fuel complex (canopy) is involved in flame, but the crowning phase remains dependent on heat released from surface fuel for continued spread (Scott & Reinhardt, 2001).



---

## VII. PRIORITIZED MITIGATION RECOMMENDATIONS

### Executive Summary

As Screven County continues to see increased growth from Augusta and other areas seeking less crowded and warmer climates, new development will occur more frequently on forest and wildland areas. Screven County will have an opportunity to significantly influence the wildland fire safety of new developments. It is important that new development be planned and constructed to provide for public safety in the event of a wildland fire emergency.

Over the past 25 years, much has been learned about how and why homes burn during wildland fire emergencies. Perhaps most importantly, case histories and research have shown that even in the most severe circumstances, wildland fire disasters can be avoided. Homes can be designed, built and maintained to withstand a wildfire even in the absence of fire services on the scene. The National Firewise Communities program is a national awareness initiative to help people understand that they don't have to be victims in a wildfire emergency. The National Fire Protection Association has produced two standards for reference: NFPA 1144 Standard for Reducing Structure Ignition Hazards from Wildland Fire. 2008 Edition and NFPA 1141 Standard for Fire Protection Infrastructure for Land Development in Suburban and Rural Areas.

When new developments are built in the Wildland/Urban Interface, a number of public safety challenges may be created for the local fire services: (1) the water supply in the immediate areas may be inadequate for fire suppression; (2) if the Development is in an outlying area, there may be a longer response time for emergency services; (3) in a wildfire emergency, the access road(s) may need to simultaneously support evacuation of residents and the arrival of emergency vehicles; and (4) when wildland fire disasters strike, many structures may be involved simultaneously, quickly exceeding the capability of even the best equipped fire departments.

In 2012 the International Code Council developed the International Wildland Urban Interface Code (IWUIC). The code is endorsed by the National Fire Protection Association (NFPA) and in 2014 the code was adopted by the Georgia Legislature to be used by counties to help lower fire risk in the higher risk areas in the WUI.

The following recommendations were developed by the Screven County CWPP Core team as a result of surveying and assessing fuels and structures and by conducting meetings and interviews with county and city officials. A priority order was determined based on which mitigation projects would best reduce the hazard of wildfire in the assessment area.

## Proposed Community Hazard and Structural Ignitability Reduction Priorities

| Primary Protection for Community and Its Essential Infrastructure |  |   |
|---|--|---|
| Treatment Area  | Treatment Types  | Treatment Method(s)   |
| 1. All Structures   | Create minimum of 30-foot of defensible space**  | Trim shrubs and vines to 30 feet from structures, trim overhanging limbs, replace flammable plants near homes with less flammable varieties, remove vegetation around chimneys.   |
| 2. Applicable Structures  | Reduce structural ignitability**   | Clean flammable vegetative material from roofs and gutters, store firewood appropriately, install skirting around raised structures, store water hoses for ready access, and replace pine straw and mulch around plantings with less flammable landscaping materials.   |
| 3. Community Clean-up Day<br>National Wildfire Preparedness Day   | Cutting, mowing, pruning**   | Cut, prune, and mow vegetation in shared community spaces.  |
| 4. Driveway Access  | Culvert installation   | See that adequate lengths of culverts are installed to allow emergency vehicle access.  |
| 5. Road Access  | Identify needed road improvements  | As roads are upgraded, widen to minimum standards with at least 50 foot diameter cul de sacs or turn arounds.   |
| 6. Codes and Ordinances   | Examine existing codes and ordinances.<br><br>International Wildland Urban Interface Code<br><br>IWUIC | Amend and enforce existing building codes as they relate to skirting, propane tank locations, public nuisances (trash/debris on property), Property address marking standards and other relevant concerns<br><br>Review Subdivision and development ordinances for public safety concerns.<br><br>Enforce uniform addressing ordinance. |
| 7. Burn Permits   | Education and Enforcement  | Greater Burn Permit enforcement and education from the Georgia Forestry Commission.   |



**Proposed Community Wildland Fuel Reduction Priorities**

| Treatment Area         | Treatment Types        | Treatment Method(s)  |
|------------------------|------------------------|--|
| 1. Adjacent WUI Lands  | Reduce hazardous fuels | Encourage prescribed burning for private landowners and industrial timberlands particularly adjacent to residential areas.<br>Seek grant for prescribed burning in WUI areas.<br>Seek grant for WUI mitigation team. |
| 2. Railroad Corridors  | Reduce hazardous fuels | Encourage railroads to better maintain their ROW eliminating brush and grass through herbicide and mowing. Maintain firebreaks along ROW adjacent to residential areas.  |
| 3. Existing Fire Lines | Reduce hazardous fuels | Clean and re-harrow existing lines.  |

**Proposed Improved Community Wildland Fire Response Priorities**

|                  |                    |  |
|------------------|--------------------|--|
| 1. Water Sources | Dry Hydrants       | Inspect, maintain and improve access to existing dry hydrants. Add signage along road to mark the hydrants.<br>Locate additional dry hydrants as needed.<br>Locate and pre-clear helicopter dip sites. |
| 2. Fire Stations | Equipment          | Wildland hand tools. Lightweight Wildland PPE Gear.  |
| 3. Water Sources | Drafting equipment | Investigate need for additional drafting pumps.  |
| 4. Road Names    | Road Signage       | Improved Road Signage at Crossroads. “Dead End” or “No Outlet” Tags on Road Signs.   |
| 5. Personnel     | Training           | Obtain Wildland Fire Suppression training for Fire Personnel.<br>Ready Set Go training.  |

**\*\*Actions to be taken by homeowners and community stakeholders**

---

## Proposed Education and Outreach Priorities

### 1. Conduct “How to Have a Firewise Home” Workshop for Screven County Residents

Set up and conduct a workshop for homeowners that teach the principles of making homes and properties safe from wildfire. Topics for discussion include defensible space, landscaping, building construction, etc. Workshop will be scheduled for evenings or weekends when most homeowners are available and advertised through local media outlets.

Distribute materials promoting firewise practices and planning through local community and governmental meetings.

### 2. Conduct “Firewise” Workshop for Community Leaders

Arrange for GFC Firewise program to work with local community leaders and governmental officials on the importance of “Firewise Planning” in developing ordinances and codes as the county as the need arises. Identify “Communities at Risk” within the county for possible firewise community recognition.

### 3. Spring Clean-up Event (National Wildfire Preparedness Day – 1<sup>st</sup> Saturday in May annually)

Conduct clean-up event every spring involving the Georgia Forestry Commission, Screven County Fire Departments and community residents. Set up information table with educational materials and refreshments. Initiate the event with a morning briefing by GFC Firewise coordinator and local fire officials detailing plans for the day and safety precautions. Activities to include the following:

- Clean flammable vegetative material from roofs and gutters
- Trim shrubs and vines to 30 feet away from structures
- Trim overhanging limbs
- Clean hazardous or flammable debris from adjacent properties

Celebrate the work with a community cookout, with Community officials, GFC and Screven County Fire Departments discussing and commending the work accomplished.

### 4. Informational Packets

Develop and distribute informational packets to be distributed by realtors and insurance agents. Included in the packets are the following:

- Be Firewise Around Your Home
- Firewise Guide to Landscape and Construction
- Firewise Communities USA brochures
- Fire Adapted Community information
- Ready Set Go materials

---

## 5. Wildfire Protection Display

Create and exhibit a display for the general public at the Screven County Livestock Festival and other local events. Display can be independent or combined with the Georgia Forestry Commission display. Hold Open House at individual Fire Stations to promote Community Firewise Safety and develop community support and understanding of local fire departments and current issues.

## 6. Media

Invite the Sylvania and Statesboro news media to community “Firewise” functions for news coverage and regularly submit press releases documenting wildfire risk improvements in Screven County. Utilize Radio, TV, Cable access, and Social Media to help spread information.



**The Georgia Forestry Commission can assist with developing a prescribed burning plan, installation of firebreaks, and can provide equipment standby and burning assistance when personnel are available. Private forestry contractors can also provide this service.**

**Forestry mowers and brush cutters, such as pictured here, can be very effective in reducing understory fuels in areas where prescribed fire is not practical. This practice can lower risk near homes in the wildland urban interface. Private contractors can provide this service.**



## VIII. ACTION PLAN

### Roles and Responsibilities

The following roles and responsibilities have been developed to implement the action plan:

| Role  | Responsibility   |
|---|--|
| Hazardous Fuels and Structural Ignitability Reduction |  |
| Screven County WUI Fire Council                       | Create this informal team or council comprised of residents, GFC officials, Screven County Fire department officials, a representative from the city and county government and the EMA Director for Screven County. Meet periodically to review progress towards mitigation goals, appoint and delegate special activities, work with federal, state, and local officials to assess progress and develop future goals and action plans. Work with residents to implement projects and firewise activities. |
| Key Messages to focus on                              | <ol style="list-style-type: none"> <li>1 Defensible Space and Firewise Landscaping</li> <li>2 Debris Burning Safety</li> <li>3 Firewise information for homeowners</li> <li>4 Prescribed burning benefits</li> </ol>   |
| Communications objectives                             | <ol style="list-style-type: none"> <li>1 Create public awareness for fire danger and defensible space issues</li> <li>2 Identify most significant human cause fire issues</li> <li>3 Enlist public support to help prevent these causes</li> <li>4 Encourage people to employ fire prevention and defensible spaces in their communities.</li> </ol>   |
| Target Audiences                                      | <ol style="list-style-type: none"> <li>1 Homeowners</li> <li>2 Forest Landowners and users</li> <li>3 Civic Groups</li> <li>4 School Groups</li> </ol>   |
| Methods   | <ol style="list-style-type: none"> <li>1 News Releases</li> <li>2 Radio and TV PSAs</li> <li>3 Personal Contacts</li> <li>4 Key messages and prevention tips</li> <li>5 Visuals such as signs, brochures and posters</li> </ol>  |

| Spring Clean-up Day (National Wildfire Preparedness Day – 1 <sup>st</sup> Saturday in May annually) |  |
|---|--|
| Event Coordinator   | Coordinate day's events and schedule, catering for cookout, guest attendance, and moderate activities the day of the day of the event.   |
| Event Treasurer   | Collect funds from residents to cover food, equipment rentals, and supplies.   |
| Publicity Coordinator   | Advertise event through neighborhood newsletter, letters to officials, and public service announcements (PSAs) for local media outlets. Publicize post-event through local paper and radio PSAs.   |
| Work Supervisor   | Develop volunteer labor force of community residents; develop labor/advisory force from Georgia Forestry Commission, Screven County Fire Departments, and Emergency Management Agency. Procure needed equipment and supplies. In cooperation with local city and county officials, develop safety protocol. Supervise work and monitor activities for safety the day of the event. |

### Funding Needs

The following funding is needed to implement the action plan:

| Project  | Estimated Cost | Potential Funding Source(s)   |
|--|----------------|---|
| 1. Create a minimum of 30 feet of defensible space around structures   | Varies         | Residents will supply labor and fund required work on their own properties. |
| 2. Reduce structural ignitability by cleaning flammable vegetation from roofs and gutters; appropriately storing firewood, installing skirting around raised structures, storing water hoses for ready access, replacing pine needles and mulch around plantings with less flammable material. | Varies         | Residents will supply labor and fund required work on their own properties. |
| 3. Amend codes and ordinances to provide better driveway access, increased visibility of house numbers, properly stored firewood, minimum defensible space brush clearance, required Class A roofing materials and skirting around raised structures, planned maintenance of community lots.   | No Cost        | To be adopted by city and county government.                                |
| 4. Spring Cleanup Day<br>National Wildfire Preparedness Day  | Varies         | Community Business Donations.<br>State Farm grant                           |
| 5. Fuel Reduction Activities   | \$35 / acre    | FEMA & USFS Grants  |

---

## Assessment Strategy

To accurately assess progress and effectiveness for the action plan, the Screven County WUI Fire Council will implement the following:

- Annual wildfire risk assessment will be conducted to re-assess wildfire hazards and prioritize needed actions.
- Mitigation efforts that are recurring (such as mowing, burning, and clearing of defensible space) will be incorporated into an annual renewal of the original action plan.
- Mitigation efforts that could not be funded in the requested year will be incorporated into the annual renewal of the original action plan.
- Continuing educational and outreach programs will be conducted and assessed for effectiveness. Workshops will be evaluated based on attendance and post surveys that are distributed by mail 1 month and 6 months following workshop date.
- The Screven County WUI Council will publish an annual report detailing mitigation projects initiated and completed, progress for ongoing actions, funds received, funds spent, and in-kind services utilized. The report will include a “state of the community” section that critically evaluates mitigation progress and identifies areas for improvement. Recommendations will be incorporated into the annual renewal of the action plan.
- An annual survey will be distributed to residents soliciting information on individual mitigation efforts on their own property (e.g., defensible space). Responses will be tallied and reviewed at the next Screven County WUI Council meeting. Needed actions will be discussed and delegated.

This plan should become a working document that is shared by local, state, and federal agencies that will use it to accomplish common goals. An agreed-upon schedule for meeting to review accomplishments, solve problems, and plan for the future should extend beyond the scope of this plan. Without this follow up this plan will have limited value.

---

## IX. MITIGATION ASSISTANCE & GRANT FUNDING

Community Protection Grant: US Forest Service sponsored prescribed fire program. Communities with “at-risk” properties that lie within ten miles of a National Forest, National Park Service or Bureau of Land Management tracts may apply with the Georgia Forestry Commission to have their land prescribe burned free-of-charge. Forest mastication, where it is practical with Georgia Forestry Commission equipment, is also available under this grant program.

FEMA Mitigation Policy MRR-2-08-01: through GEMA – Hazard Mitigation Grant Program (HMGP) and Pre-Disaster Mitigation Program (PDM).

1. To provide technical and financial assistance to local governments to assist in the implementation of long term, cost effective hazard mitigation accomplishments.
2. This policy addresses wildfire mitigation for the purpose of reducing the threat to all-risk structures through creating defensible space, structural protection through the application of ignition resistant construction and limited hazardous fuel reduction to protect life and property.
3. With a completed registered plan (addendum to the State Plan) counties can apply for pre-mitigation funding. They will also be eligible for HMGP funding if the county is declared under a wildfire disaster.

Georgia Forestry Commission: Plowing and prescribed burning assistance, as well as forest mastication, can be obtained from the GFC as a low-cost option for mitigation efforts.

The Georgia Forestry Commission Firewise Community Mitigation Assistance Grants – Nationally recognized Firewise Communities can receive up to \$5000 grants to help address potential wildfire risk reduction projects. Grant submission can be made through local Georgia Forestry Commission offices or your Regional Wildfire Prevention Specialist.

The International Association of Fire Chiefs (IAFC) and American International Group, Inc. (AIG) offer grants to assist local fire departments in establishing or enhancing their community fuels mitigation programs while educating members of the community about community wildfire readiness and encouraging personal action.

---

## **X. GLOSSARY**

*Community-At-Risk – A group of two or more structures whose proximity to forested or wildland areas places homes and residents at some degree of risk.*

*Critical Facilities – Buildings, structures or other parts of the community infrastructure that require special protection from an approaching wildfire.*

*CWPP – The Community Wildfire Protection Plan.*

*Defensible Space – The immediate landscaped area around a structure (usually a minimum of 30 ft.) kept “lean, clean and green” to prevent an approaching wildfire from igniting the structure.*

*Dry Hydrant - A non-pressurized pipe system permanently installed in existing lakes, ponds and streams that provides a suction supply of water to a fire department tank truck.*

*FEMA – The Federal Emergency Management Agency whose mission is to support our citizens and first responders to ensure that as a nation we work together to build, sustain, and improve our capability to prepare for, protect against, respond to, recover from, and mitigate all hazards.*

*Fire Adapted Community – A community fully prepared for its wildfire risk by taking actions to address safety, homes, neighborhoods, businesses and infrastructure, forest, parks, open spaces, and other community assets.*

*Firewise Program – A national initiative with a purpose to reduce structural losses from wildland fires.*

*Firewise Community/USA – A national recognition program for communities that take action to protect themselves from wildland fire. To qualify a community must have a wildfire risk assessment by the Georgia Forestry Commission, develop a mitigation action plan, have an annual firewise mitigation/education event, have dedicated firewise leadership, and complete the certification application.*

*Fuels – All combustible materials within the wildland/urban interface or intermix including, but not limited to, vegetation and structures.*

*Fuel Modification – Any manipulation or removal of fuels to reduce the likelihood of ignition or the resistance to fire control.*

*Hazard & Wildfire Risk Assessment – An evaluation to determine an area’s (community’s) potential to be impacted by an approaching wildland fire.*



---

Healthy Forests Initiative - *Launched in August 2002 by President Bush (following passage of the Healthy Forests Restoration Act by Congress) with the intent to reduce the risks severe wildfires pose to people, communities, and the environment.*

Home Ignition Zone (Structure Ignition Zone) - *Treatment area for wildfire protection. The “zone” includes the structure(s) and their immediate surroundings from 0-200 ft.*

Mitigation – *An action that moderates the severity of a fire hazard or risk.*

National Fire Plan – *National initiative, passed by Congress in the year 2000, following a landmark wildland fire season, with the intent of actively responding to severe wildland fires and their impacts to communities while ensuring sufficient firefighting capacity for the future.*

National Fire Protection Association (NFPA) - *An international nonprofit organization established in 1896, whose mission is to reduce the worldwide burden of fire and other hazards on the quality of life by providing and advocating consensus codes and standards, research, training, and education.*

National Wildfire Preparedness Day – *Started in 2014 by the National Fire Protection Association as a day for communities to work together to prepare for the approaching wildfire season. It is held annually on the first Saturday in May.*

Prescribed Burning (prescribed fire) –*The use of planned fire that is deliberately set under specific fuel and weather condition to accomplish a variety of management objectives and is under control until it burns out or is extinguished.*

Ready, Set, Go - *A program fire services use to help homeowners understand wildfire preparedness, awareness, and planning procedures for evacuation.*

Southern Group of State Foresters – *Organization whose members are the agency heads of the forestry agencies of the 13 southern states, Puerto Rico and the Virgin Islands.*

Stakeholders– *Individuals, groups, organizations, businesses or others who have an interest in wildland fire protection and may wish to review and/or contribute to the CWPP content.*

Wildfire or Wildland Fire – *An unplanned and uncontrolled fire spreading through vegetative fuels.*

Wildland/Urban Interface - *The presence of structures in locations in which the authority having jurisdiction (AHJ) determines that topographical features, vegetation, fuel types, local weather conditions and prevailing winds result in the potential for ignition of the structures within the area from flames and firebrands from a wildland fire (NFPA 1144, 2008).*

---

## **XI. SOURCES OF INFORMATION**

Publications/Brochures/Websites:

- FIREWISE materials can be ordered at [www.firewise.org](http://www.firewise.org)
- Georgia Forestry Commission [www.georgiafirewise.org](http://www.georgiafirewise.org)
- Examples of successful wildfire mitigation programs can be viewed at the website for National Database of State and Local wildfire Hazard Mitigation Programs sponsored by the U.S. Forest Service and the Southern Group of State Foresters [www.wildfireprograms.com](http://www.wildfireprograms.com)
- Information about a variety of interface issues (including wildfire) can be found at the USFS website for Interface South: [www.interfacesouth.org](http://www.interfacesouth.org)
- Information on codes and standards for emergency services including wildfire can be found at [www.nfpa.org](http://www.nfpa.org)
- Information on FEMA Assistance to Firefighters Grants (AFG) can be found at [www.firegrantsupport.com](http://www.firegrantsupport.com)
- Information on National Fire Plan grants can be found at <http://www.federalgrantswire.com/national-fire-plan--rural-fire-assistance.html>
- Southern Wildfire Risk Assessment website SouthWRAP [www.SouthernWildfireRisk.com](http://www.SouthernWildfireRisk.com)
- Fire Adapted Communities [www.fireadapted.org](http://www.fireadapted.org)
- Ready, Set, Go [www.wildlandfirersg.org](http://www.wildlandfirersg.org)
- National Wildfire Preparedness Day [www.wildfireprepreday.org](http://www.wildfireprepreday.org)

### **Appended Documents:**

Screven County Southern Wildfire Risk Assessment Summary Report (SWRA)

Screven County Wildfire assessment scoresheets

All files that make up this plan are available in an electronic format from the Georgia Forestry Commission.

GEORGIA FORESTRY  
COMMISSION



Georgia Forestry Commission  
5645 Riggins Mill Rd.  
Dry Branch, GA 31020

1-800-GA-TREES  
GaTrees.org

*The Georgia Forestry Commission provides leadership,  
service, and education in the protection and conservation  
of Georgia's forest resources.*

*An Equal Opportunity Employer and Service Provider*