



# Community Wildfire Protection Plan

## *An Action Plan for Wildfire Mitigation and Conservation of Natural Resources*

### Spalding County, Georgia

A Program of the Georgia Forestry Commission  
with support from the U.S. Forest Service



SEPTEMBER, 2017

**SIGNATURE PAGE**

---

Honorable Raymond Ray, Chairman  
Spalding County Board of Commissioners

---

Date

---

William Wilson, County Manager  
Spalding County

---

Date

---

Eric Mosley Assistant County Manager  
Spalding County

---

Date

---

Kenny West, Fire Chief/EMA Director  
Spalding County

---

Date

---

Jeff Kenerly, Chief Ranger  
Georgia Forestry Commission

---

Date

Prepared by:

Jeff Kenerly, Spalding County Chief Ranger  
Eric Mosley, Community Wildfire Protection Specialist  
Beryl Budd, Wildfire Prevention Specialist (revised 2017)

Georgia Forestry Commission  
Spalding County Forestry Office  
2035 Etheridge Mill  
Griffin, GA. 30224

The following report is a collaborative effort among various entities; the representatives listed below comprise the core decision-making team responsible for this report and mutually agree on the plan's contents:

County Commissioners Office, Spalding County

Spalding County Emergency Management/Fire Department

Jeff Kenerly  
Chief Ranger, Spalding County Forestry Unit

City of Griffin

Eric Mosley  
Community Wildfire Protection Specialist

## **PLAN CONTENTS**

I. Objectives .....	1
II. Community Collaboration .....	1
III. Community Background and Wildfire History.....	2
IV. County Base Maps .....	8
V. Community Wildfire Risk Assessment .....	12
VI. Southern Wildfire Risk Assessment & Risk Hazard Maps .....	19
VII. Prioritized Mitigation Recommendations .....	23
VIII. Action Plan .....	27
IX. Mitigation Assistance & Grant Funding.....	30
X. Glossary .....	31
XI. Sources of Information .....	33

### Attachments:

Spalding County Southern Wildfire Risk Assessment Summary Report (SWRA)

Spalding County Wildfire Pre-suppression Plan

Community Wildfire Risk Assessment Template

Community Wildfire Risk Assessments Completed

NFPA 1141 Standard for Fire Protection Infrastructure for Land Development in Suburban and Rural Areas.

## **I. OBJECTIVES**

A Community Wildfire Protection Plan (CWPP) provides a community with a road map to reduce its risk from wildfire. A CWPP is designed through collaboration between state and local fire agencies, homeowners and landowners, and other interested parties such as city councils, utilities, homeowners associations, environmental organizations, and other local stakeholders. The plan identifies strategic sites and methods for risk reduction and structural protection projects across jurisdictional boundaries.

Comprehensive plans provide long-term guidance for growth, reflecting a community's values and future expectations. The plan implements the community's values and serves to protect natural and community resources and public safety. Planning also enables communities to address their development patterns in the Wildland Urban Interface and determine how they can reduce their risk through alternative development patterns. The formal legal standing of the plan and its central role in local government decision making underscores the opportunity to use this planning process as an effective means for reducing wildfire risk.

The mission of the following plan is to set clear priorities for the implementation of wildfire mitigation in Spalding County. The plan includes prioritized recommendations for the appropriate types and methods of fuel reduction and structure ignitability reduction that will protect this community and its essential infrastructure. It also includes a plan for wildfire suppression. Specifically, the plan includes community-centered actions that will:

- Educate citizens on wildfire, its risks, and ways to protect lives and properties,
- Support fire rescue and suppression entities,
- Focus on collaborative decision-making and citizen participation,
- Develop and implement effective mitigation strategies, and
- Develop and implement effective community ordinances and codes.

## **II. COMMUNITY COLLABORATION**

Wildfire risk reduction strategies are most effective when approached collaboratively – involving groups of residents, elected officials, community decision makers, emergency managers, and natural resource managers –and when combined with effective outreach approaches. Collaborative approaches make sense as the initial focus of any community attempting to work toward wildfire risk reduction. In all Community Wildfire Protection Plan collaborations, the goal is to cooperatively identify problems and reach a consensus for mutual action. In the case of wildfire mitigation, a reduction in the wildfire risk to the community's lives, houses, and property is the desired outcome.

The collaborative core team convened in April 2012 to assess risks and develop the Community Wildfire Protection Plan. The group is comprised of representatives from local Spalding County government, Spalding County Fire Department and Emergency Management, and the Georgia Forestry Commission.

Below are the groups included in the task force:

Spalding County Government

*County Fire Chief*

*Emergency Management*

*County Commissioner*

City of Griffin

Georgia Forestry Commission

It was decided to conduct community assessments on the basis of the high risk communities and the individual fire districts in the county. The representatives of the local Georgia Forestry Commission office reconvened in late Summer of 2012 for the purpose of completing the following:

Risk Assessment	Assessed wildfire hazard risks and prioritized mitigation actions. The wildfire risk assessment will help homeowners, builders, developers, and emergency personnel whether the area needs attention and will help direct wildfire risk reduction practices to the areas at highest risk.
Fuels Reduction	Identified strategies for coordinating fuels treatment projects.
Structure Ignitability	Identified strategies for reducing the ignitability of structures within the Wildland interface.
Emergency Management	Forged relationships among local government and fire districts and developed/refined a pre-suppression plan.
Education and Outreach	Developed strategies for increasing citizen awareness and action and to conduct homeowner and community leader workshops. Outreach and education programs are designed to raise awareness and improve audience knowledge of wildfire risk reduction needs and practices. In the best cases, education and outreach programs will influence attitudes and opinions and result in effective action.

### III. COUNTY BACKGROUND AND WILDFIRE HISTORY

#### County Background:



Spalding County, in west central Georgia, was created in 1851 by the state legislature from parts of Fayette, Henry, and Pike counties. Forty miles south of downtown Atlanta, Spalding is part of the Atlanta Metropolitan Statistical Area and one of six counties in the Towaliga Soil and Water Conservation District. Comprising 198 square miles, the county was named for Thomas Spalding, an influential statesman and planter from coastal Georgia.

The incorporated communities in Spalding County are Griffin, Orchard Hill, and Sunny Side. The county seat is Griffin, where the current county courthouse was built in 1985. Griffin was incorporated in 1843, when it was located in Pike County. Known as Pleasant Grove until 1841, the town was first settled in the mid-1820s. In 1840 Lewis Lawrence Griffin, a banker, planter, philanthropist, and the first president of the Macon and Western Railroad, bought 800 acres in the area. He sold off lots in town, with plans to develop the community into an elaborate city with wide boulevards. Pleasant Grove citizens renamed the town to honor him.

A number of military companies from Spalding County fought in the Civil War (1861-65), and historical markers noting their activities are scattered across the area. Infantry mobilized from Camp Stephens, two miles north of Griffin on McIntosh Road, and residents cared for the wounded in the town's hospitals and homes. The hundreds of miles of railroad through the county sustained major damage during the war, creating extreme financial distress throughout the area. The economy was later revived by the arrival of textile manufacturing.



*Spalding County Courthouse*

The Stonewall Confederate Cemetery and Memorial Park in Griffin was created by women who collected and buried the remains of the fallen after the battles of Atlanta and Jonesboro. It has since been dedicated to the dead of other American wars, as well as to the women who nursed soldiers during the Civil War.

Notable persons who have lived in Spalding County include the gambler and sharpshooter John Henry "Doc" Holliday and Olympic track and field athletes Margaret Matthews and Wyomia Tyus.



Among the interesting sites in the county is the Orr-Williamson-Gaissert Homeplace (also known as the Old Gaissert Homeplace, the Williamson Place, or the Mary Brook Farm), northeast of Williamson. The site won a 2002 Georgia Centennial Farm Award, which honors families and farms for preserving their historic properties. Oak Hill Cemetery, part of Griffin's original city plan, is the burial site of many historical figures associated with Spalding County.

As have many other areas in the state whose economies focused on one or two major industries, Spalding County has experienced cycles of economic depression and recovery during the Civil War, Reconstruction (1867-76), a subsequent depression, a boll weevil infestation, and the Great Depression.



Georgia Experiment Station

Most recently, Spalding County's economy has been threatened by imported textile goods, which directly compete with one of the county's major products.

Although it has remained a county of small-town communities, Spalding's proximity to Atlanta has attracted new residents from the city. Several regional facilities, including Spalding Regional Medical Center and Southern Crescent Technical College, also draw people to the area. The University of Georgia College of Agricultural and Environmental Sciences supports a Griffin campus that provides agricultural education, conducts research, maintains an agricultural extension service, and serves the needs of area residents and farmers with information and other assistance.

According to the 2010 U.S. census, Spalding County's population was 64,073, an increase from the 2000 population of 58,417.

### **Wildfire History:**

Recent data show that a majority of the fastest growing areas in the U.S. are in wildfire-prone environments. It is not a surprise that some of these fastest growing areas are in Georgia. In last decade of the 20<sup>th</sup> Century, Georgia's population increased substantially. Homeowners in Georgia must contend with natural hazards including wildfire, tornados, and flooding. This combination of factors – burgeoning population, abundant natural areas, development pressures, and lack of public awareness makes Georgia a perfect state for creating solutions to various hazards. Georgia is looked to throughout the southern region as a leader in comprehensive and hazard mitigation planning.

Many of Georgia's existing and new residents living in the urban interface are unaware of the vital role fire plays in our landscape and that their homes are extremely vulnerable to wildfire damage. Balancing development pressures with wildfire risk reduction and education creates a unique challenge for local governments, emergency managers, and wildfire management agencies such as the Georgia Forestry Commission.

Over the past five years, Spalding County has averaged 12.8 reported wildfires per year. The occurrence of these fires is fairly uniform throughout the year with a slight peak in the months of February and March and a slight decrease during the fall months. These fires have burned an average of 53.72 acres annually. While the numbers of fires remain fairly similar every month, there is a marked difference in the monthly acreage lost. The monthly acres lost during the late winter through summer period show a tenfold increase over the acres lost during the fall and early winter. Additionally while the annual numbers of fires have not increased noticeably during the 5 year period that records are available, the annual acreage lost appears to have decreased in later years. This perhaps a result of the increase in the practice of prescribed burning. The local Georgia Forestry Commission office needs to be commended for their valiant work increasing their very impressive prescribed burning regiment. Despite their work, more homes are being built outside of traditional communities into the wildland urban interface. With this migration of people to the wildland urban interface the potential for a wildfire disaster continues to increase for Spalding County.

The leading causes of these fires over the past 5 years in Spalding county was careless debris burning which came to almost 60 percent of all fires reported. Though these causes are a bit disturbing, local efforts of outreach and education can easily curb this problem.

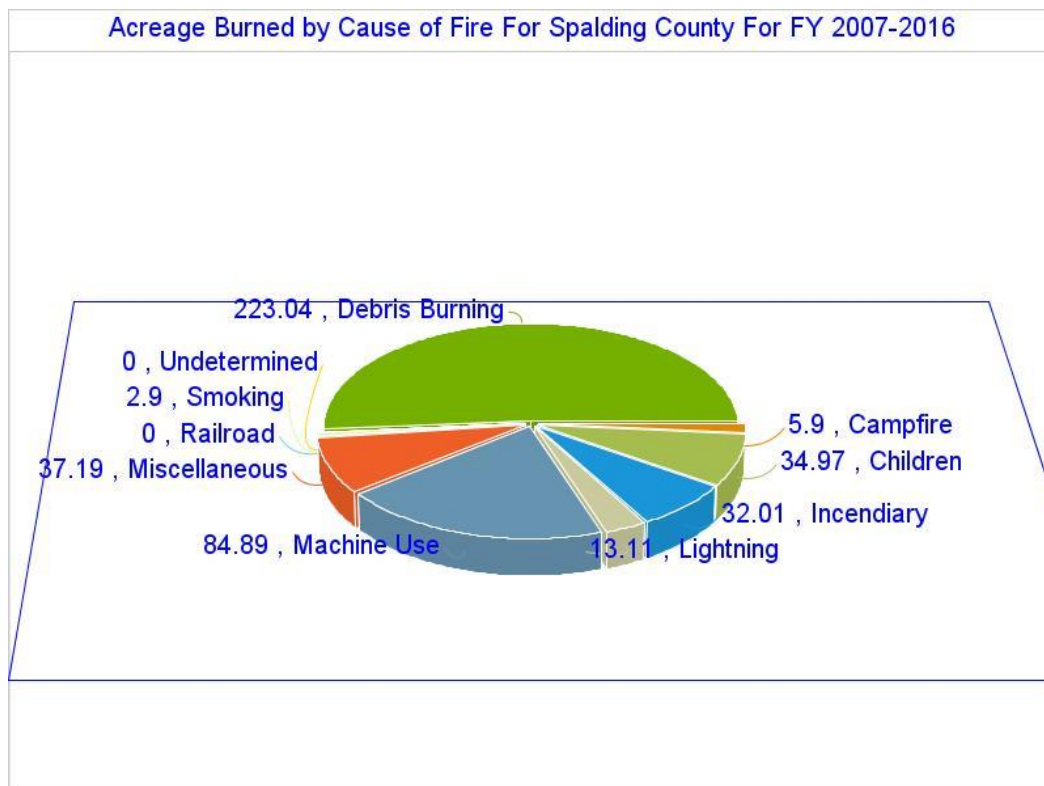


Wildfire activity for the 2017 fiscal year, July 1, 2016 – June 30, 2017.

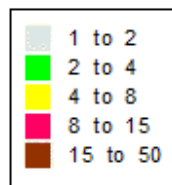
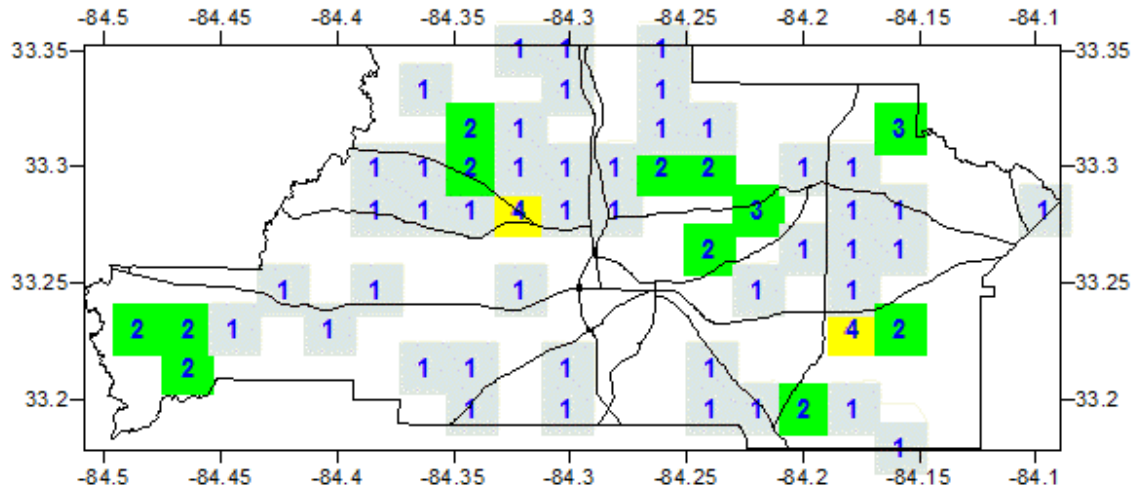
County = Spalding	Cause	Fires	Acres	Fires 5 Yr Avg	Acres 5 Yr Avg
<a href="#">Campfire</a>	Campfire	2	2.47	0.60	0.51
<a href="#">Children</a>	Children	1	0.50	1.40	0.78
<a href="#">Debris: Ag Fields, Pastures, Orchards, Etc</a>	Debris: Ag Fields, Pastures, Orchards, Etc	1	0.01	0.40	4.38
<a href="#">Debris: Construction Land Clearing</a>	Debris: Construction Land Clearing	1	2.60	0.80	1.08
<a href="#">Debris: Escaped Prescribed Burn</a>	Debris: Escaped Prescribed Burn	0	0.00	0.40	4.63
<a href="#">Debris: Household Garbage</a>	Debris: Household Garbage	1	1.00	0.20	0.20
<a href="#">Debris: Residential, Leafpiles, Yard, Etc</a>	Debris: Residential, Leafpiles, Yard, Etc	8	25.80	3.60	9.88
<a href="#">Debris: Site Prep - Forestry Related</a>	Debris: Site Prep - Forestry Related	0	0.00	0.60	1.08
<a href="#">Incendiary</a>	Incendiary	1	0.10	0.60	0.21
<a href="#">Lightning</a>	Lightning	0	0.00	0.40	0.22
<a href="#">Machine Use</a>	Machine Use	3	119.90	1.60	25.80
<a href="#">Miscellaneous: Cutting/Welding/Grinding</a>	Miscellaneous: Cutting/Welding/Grinding	0	0.00	0.20	0.02
<a href="#">Miscellaneous: Firearms/Ammunition</a>	Miscellaneous: Firearms/Ammunition	0	0.00	0.20	0.02
<a href="#">Miscellaneous: Other</a>	Miscellaneous: Other	0	0.00	0.20	0.66
<a href="#">Miscellaneous: Power lines/Electric fences</a>	Miscellaneous: Power lines/Electric fences	2	3.57	0.80	3.89
<a href="#">Miscellaneous: Spontaneous Heating/Combustion</a>	Miscellaneous: Spontaneous Heating/Combustion	0	0.00	0.20	0.02
<a href="#">Miscellaneous: Structure/Vehicle Fires</a>	Miscellaneous: Structure/Vehicle Fires	0	0.00	0.20	0.00
<a href="#">Miscellaneous: Woodstove Ashes</a>	Miscellaneous: Woodstove Ashes	1	1.50	0.20	0.30
<a href="#">Smoking</a>	Smoking	0	0.00	0.20	0.05
<b>Totals for County: Spalding Year: 2017</b>		21	157.45	12.80	53.72

Acreage Burned /Number of Fires For Spalding County for FY 2007-2016				
Year	Acreage Burned	Number of Fires	Average Size	Statewide Average Size
2007	89.30	36	2.48	18.64
2008	17.48	17	1.03	4.56
2009	18.25	11	1.66	3.90
2010	46.39	17	2.73	3.93
2011	79.32	26	3.05	17.56
2012	72.11	35	2.06	5.08
2013	3.90	5	.78	4.53
2014	55.28	16	3.46	5.02
2015	41.88	14	2.99	4.42
2016	10.10	8	1.26	6.29

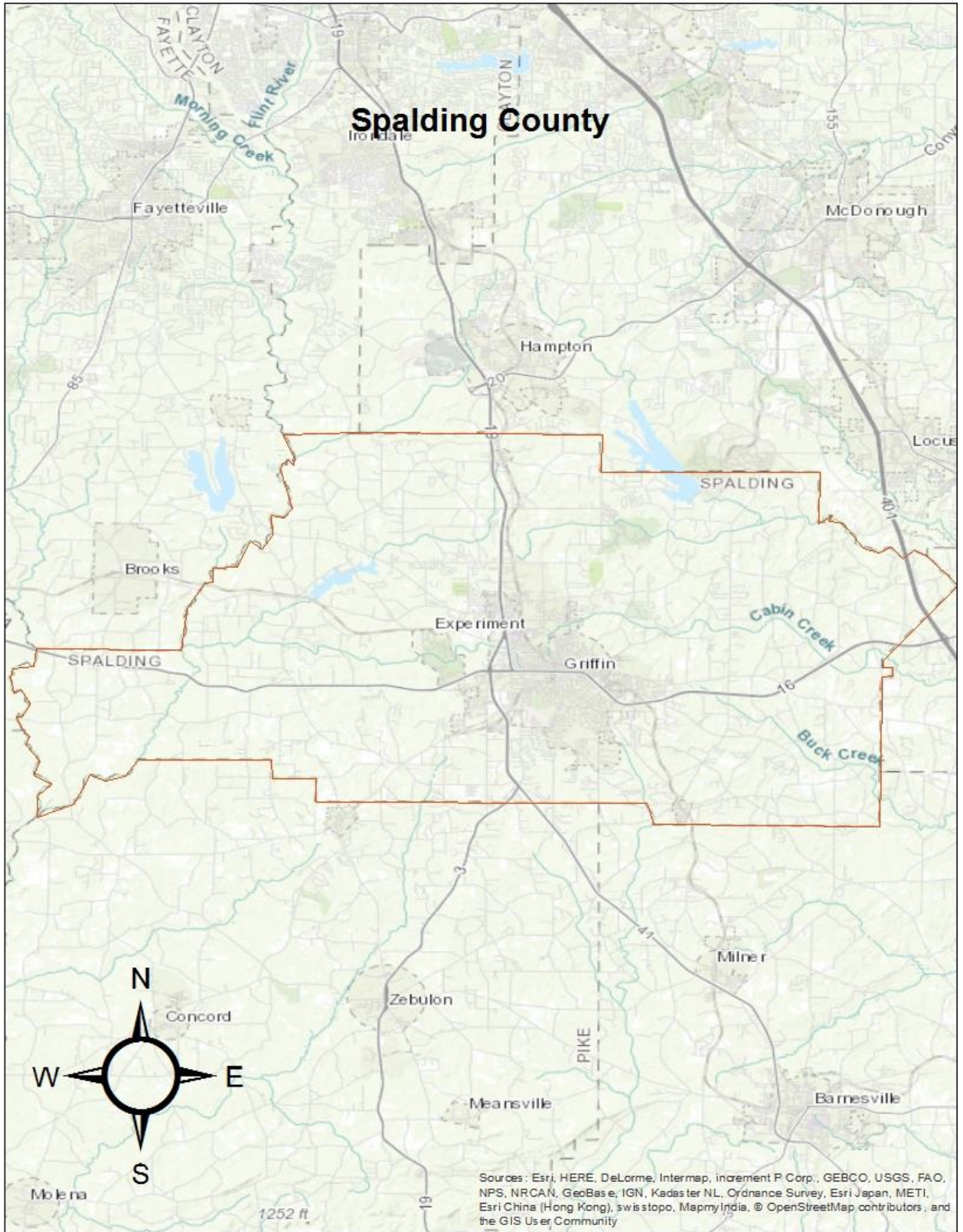
Wildfire Activity table Fiscal years 2007-2016 (above) and Acreage burned by Cause chart (below)

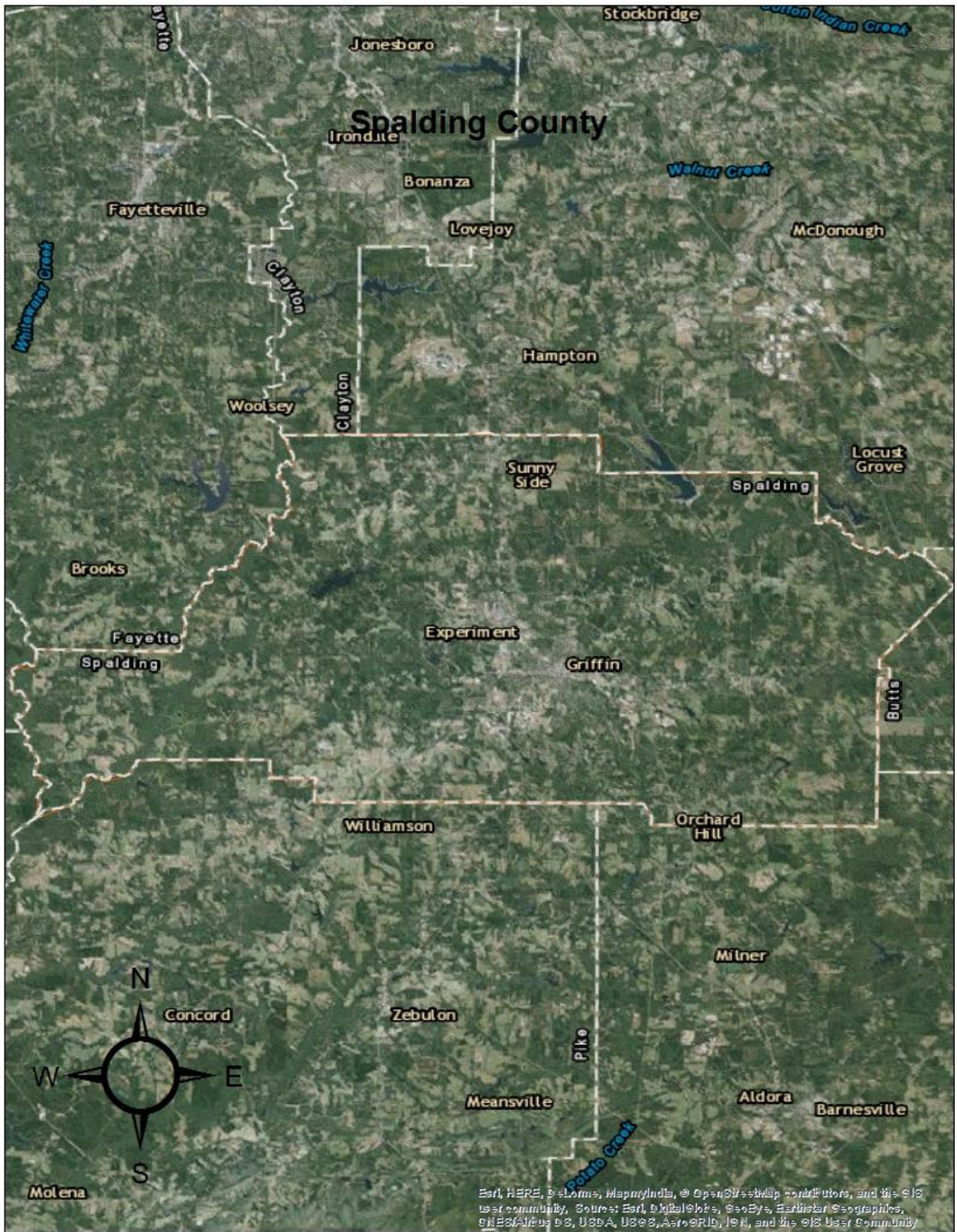


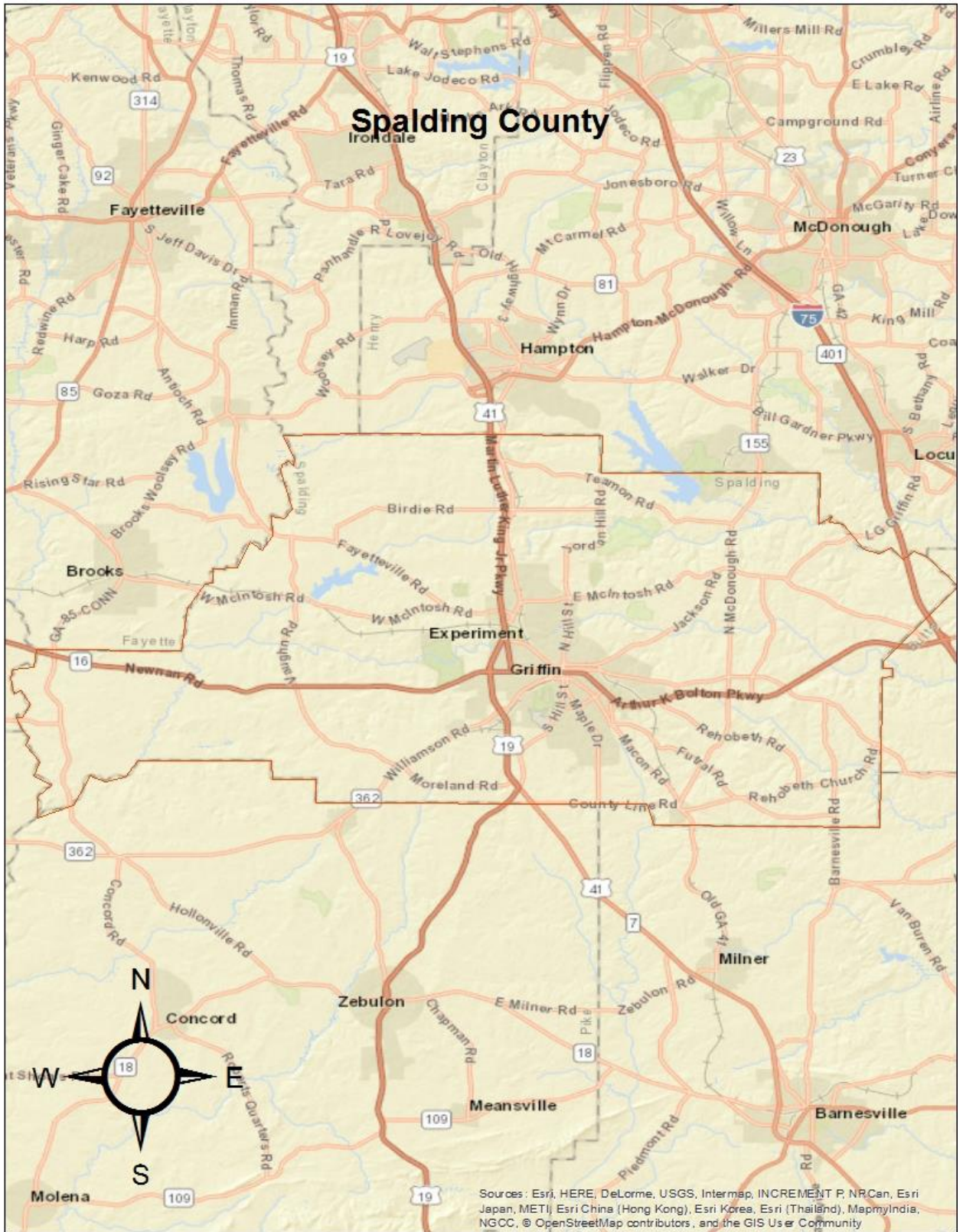
# Fire Occurrence Map for Spalding County for Fiscal Year 2012-2016



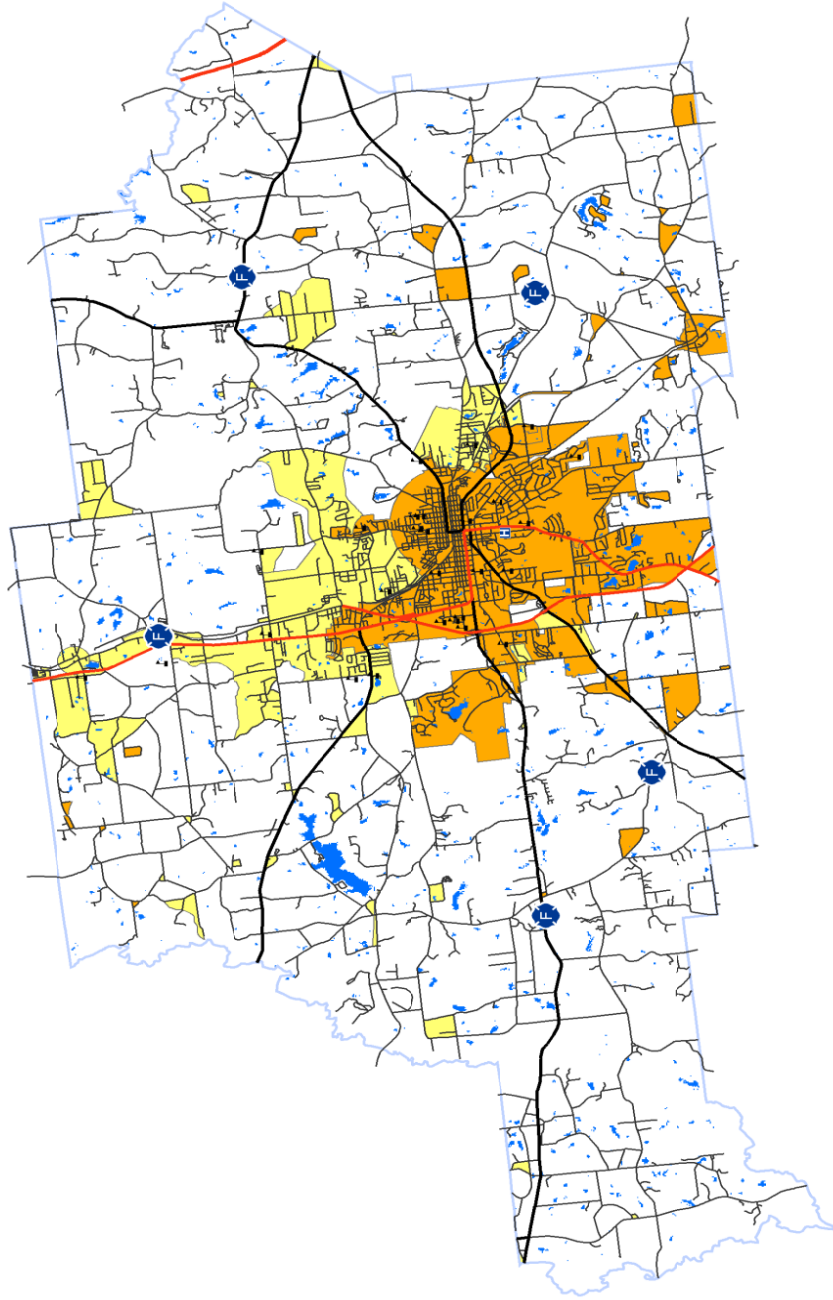
## IV. COUNTY BASE MAPS







**Fire Station locations in Spalding County**



## V. COMMUNITY WILDFIRE RISK ASSESSMENT

### The Wildland-Urban Interface

There are many definitions of the Wildland-Urban Interface (WUI), however from a fire management perspective it is commonly defined as an area where structures and other human development meet or intermingles with undeveloped wildland or vegetative fuels. As fire is dependent on a certain set of conditions, the National Wildfire Coordinating Group has defined the wildland-urban interface as a set of conditions that exists in or near areas of wildland fuels, regardless of ownership. This set of conditions includes type of vegetation, building construction, accessibility, lot size, topography and other factors such as weather and humidity. When these conditions are present in certain combinations, they make some communities more vulnerable to wildfire damage than others. This “set of conditions” method is perhaps the best way to define wildland-urban interface areas when planning for wildfire prevention, mitigation, and protection activities.

There are three major categories of wildland-urban interface. Depending on the set of conditions present, any of these areas may be at risk from wildfire. A wildfire risk assessment can determine the level of risk.

1. **“Boundary” wildland-urban interface** is characterized by areas of development where homes, especially new subdivisions, press against public and private wildlands, such as private or commercial forest land or public forests or parks. This is the classic type of wildland-urban interface, with a clearly defined boundary between the suburban fringe and the rural countryside.
2. **“Intermix” wildland-urban interface** areas are places where improved property and/or structures are scattered and interspersed in wildland areas. These may be isolated rural homes or an area that is just beginning to go through the transition from rural to urban land use.
3. **“Island” wildland-urban interface**, also called occluded interface, are areas of wildland within predominately urban or suburban areas. As cities or subdivisions grow, islands of undeveloped land may remain, creating remnant forests. Sometimes these remnants exist as parks, or as land that cannot be developed due to site limitations, such as wetlands.

(courtesy *Fire Ecology and Wildfire Mitigation in Florida* 2004)



## Wildland Urban Interface Hazards

Firefighters in the wildland urban interface may encounter hazards other than the fire itself, such as hazardous materials, utility lines and poor access.

### ● Hazardous Materials

- Common chemicals used around the home may be a direct hazard to firefighters from flammability, explosion potential and/or vapors or off-gassing. Such chemicals include paint, varnish and other flammable liquids; fertilizer; pesticides; cleansers; aerosol cans, fireworks, batteries and ammunition. In addition, some common household products such as plastics may give off very toxic fumes when they burn. Stay OUT of the smoke from burning structures and any unknown sources such as trash piles.

### ● Illicit Activities

- Marijuana plantations or drug production labs may be found in wildland urban interface areas. Extremely hazardous materials such as propane tanks and flammable/toxic chemicals may be encountered, as well as booby traps.

### ● Propane tanks

- Both large (household size) and small (gas grill size) liquefied propane gas (LPG) tanks can present hazards to firefighters, including explosion. See the "LPG Tank Hazards" discussion for details.

### ● Utility lines

- Utility lines may be located above and below ground and may be cut or damaged by tools or equipment. Don't spray water on utility lines or boxes.

### ● Septic tanks and fields

- Below-ground structures may not be readily apparent and may not support the weight of engines or other apparatus.

### ● New construction materials

- Many new construction materials have comparatively low melting points and may "off-gas" extremely hazardous vapors. Plastic decking materials that resemble wood are becoming more common and may begin softening and losing structural strength at 180° F, though they normally do not sustain combustion once direct flame is removed. However, if

they continue to burn they exhibit the characteristics of flammable liquids.

● Pets and livestock

- Pets and livestock may be left when residents evacuate and will likely be highly stressed, making them more inclined to bite and kick. Firefighters should not put themselves at risk to rescue pets or livestock.

● Evacuation occurring

- Firefighters may be taking structural protection actions while evacuations of residents are occurring. Be very cautious of people driving erratically. Distraught residents may refuse to leave their property, and firefighters may need to disengage from fighting fire to contact law enforcement officers for assistance. In most jurisdictions firefighters do not have the authority to force evacuations. Firefighters should not put themselves at risk trying to protect someone who will not evacuate!

● Limited access

- Narrow one-lane roads with no turn-around room, inadequate or poorly maintained bridges and culverts are frequently found in wildland urban interface areas. Access should be sized-up and an evacuation plan for all emergency personnel should be developed.



**WUI is described as the area where structures and other human improvements meet and intermingle with undeveloped wildland or vegetative fuels.**

The wildland fire risk assessments conducted in the Summer of 2012 by the Georgia Forestry Commission and the Spalding County Fire Department and returned an average score of 112, placing Spalding County in the “Very High Risk” hazard range. The risk assessment instrument used to evaluate wildfire hazards to Spalding County’s WUI was the Hazard and Wildfire Risk Assessment Score Sheet. The instrument takes into consideration accessibility, vegetation (based on fuel models), roofing assembly, building construction, and availability of fire protection resources, placement of gas and electric utilities, and additional rating factors. The following factors contributed to the wildfire hazard score for Spalding County:

- Dead end roads with inadequate turn-arounds
- Narrow roads without drivable shoulders
- Long, narrow, and poorly labeled driveways
- Limited street signs and homes not clearly addressed
- Thick, highly flammable vegetation surrounding many homes
- Minimal defensible space around structures
- Homes with wooden siding and roofs with heavy accumulations of vegetative debris
- No pressurized or non-pressurized water systems available
- Above ground utilities
- Large, adjacent areas of forest or wildlands
- Heavy fuel buildups in adjacent wildlands
- Undeveloped lots comprising half the total lots in many rural communities.
- High occurrence of wildfires in the several locations
- Distance from fire stations
- Lack of homeowner or community organizations
- Fuel loads from tornado storm damage

The Communities-at-Risk within Spalding County that led to its **Very High Hazard** risk rating are:

Communities-at-Risk	Score	Hazard Rating
<b>Spalding County Station 1</b>		
Ethridge Mill Rd	108	Very High Hazard
Bethany / W. Williamson Rd.	99	Moderate Hazard
Ethridge Mill to S. 6 <sup>th</sup> St.	113	Very High Hazard
Rower Rd.	108	Very High Hazard
Hwy 16 (Popular/Maloy Rd.)	112	Very High Hazard
Hwy 362 (Moreland/Rawls)	120	Very High Hazard
Carver (Aerodrome/Moreland)	99	High Hazard
Moreland(Lakeside/Merrybook Rd.)	65	Moderate Hazard
Carver (Kalamazoo/Aerodrome)	55	Moderate Hazard

<b>Spalding County Station 2</b>		
Jonan / S. McDonough Rd.	78	High Hazard
Hereford Farm /Rehoboth Church Rd.	109	Very High Hazard
Rehoboth/Buck Creek Rd.	96	High Hazard
Chappell Mill/Fox Rd.	94	High Hazard
Macon/Wilson Rd.	89	High Hazard
Linda Lane/Susan Terrace Trailers	68	Moderate Hazard
Green Valley/Futral Rd.	68	Moderate Hazard
Arthur K. Bolton (S. McDonough and S. Walker Rd.)	112	Very High Hazard
<b>Spalding County Station 3</b>		
North Walker Mill/Gainer Rd.	60	Moderate Hazard
Trestle Rd. (Johnson/Teamon)	56	Moderate Hazard
Smoak Rd. (Weldon/Teamon)	71	Moderate Hazard
Dutchman (McDonough/N. Walker Mill)	54	Moderate Hazard
Tomochichi Rd. (Wani/Jackson Rd.)	53	Moderate Hazard
Bailey Jester (Jackson/Hwy 16)	64	Moderate Hazard
Walker Rd. (Jackson/Jenkins)	55	Moderate Hazard
Johnny Cut Rd. (Locust Grove/Jackson Rd.)	47	Low Hazard
Amelia (Locust Grove/Apple)	57	Moderate Hazard
<b>Spalding County Station 4</b>		
Baptist Camp Rd.	78	High Hazard
Hill View Rd. near Old Atl.	58	Moderate Hazard
Hosanna Rd.(Teamon/Smoak)	88	Moderate Hazard
Cheatham Rd. at West Ellis 1980 Kilgore Rd.	81	Moderate Hazard
Kilgore Rd. (Dobbins Mill/Baptist Camp Rd.)	91	Moderate Hazard
Patterson Rd. (Malier/Elder)	74	Low Hazard
Steele Rd. (Honey Bear Area)	117	Very High Hazard
Old Atlanta Rd. (Mailier/Birdie Rd.)	89	High Hazard
Vineyard Rd. (Steele/N. Expressway)	55	Moderate Hazard
<b>Spalding County Station 5</b>		
Newman/Hickoryville	113	Very High Hazard
Line Creek (Fairview/BlantonMill Rd.)	129	Extreme Hazard
Rover Zettella (Blanton Mill/Scott Branch Rd.)	134	Extreme Hazard

Hollouville Rd. (Newman/Line Creek Rd.)	91	High Hazard
Crowder Rd. (Hwy 16/Flint River Rd.)	87	High Hazard
Lakeview Dr. (Newman/Flint River Rd.)	104	Very High Hazard
Hollonville Rd. (Line Creek/Fairview Rd.)	103	Very High Hazard
Newman Rd. (W. Ellis/Parker)	109	Very High Hazard
<b>Spalding County Station 6</b>		
Jordan Hill Rd/Richard St.	104	Very High Hazard
2 <sup>nd</sup> Street Ext./Teamon Rd.	104	Very High Hazard
Northside Dr./9 <sup>th</sup> Street	45	Low Hazard
Callie Rd./E McIntosh	89	High Hazard
Hamil Rd./Jackson Rd.	103	Very High Hazard
Dundee Lake Cir./Dundee Lake/Jordan Hill	131	Extreme Hazard
Seminole/Vineyard Rd.	107	Very High Hazard
Bourbon St./ N. 9 <sup>th</sup> St.	130	Extreme Hazard
Dewey St./Pinelea Rd./Jackson Rd.	96	High Hazard
Oak St./Poplar St.	120	Very High Hazard
<b>Spalding County Station 7</b>		
David Elder's (Fayetteville Hwy / Flint River Rd.)	128	Extreme Hazard
W. Ellis Rd. (Shoal Creek/Vaughn Rd.)	131	Extreme Hazard
West Ellis/Crab Tree/Flint River	114	Very High Hazard
West McIntosh Rd./Vaughn/ West Ellis Rd.	121	Extreme Hazard
Fayetteville Hwy (West Moreland / Cheatham Rd.)	134	Extreme Hazard
Moore Rd. (David Elder Rd\Flint River)	154	Extreme Hazard***
New Salem Rd. (Bendview Rd.\The Flint River)	131	Extreme Hazard
Birdie Rd. (Fayetteville / Sidney Rd.)	99	High Hazard
West McIntosh Rd. (Cheatham Rd./Vaughn School Rd.)	139	Extreme Hazard
West McIntosh Rd. (Cheatham Rd.\West Ellis Rd.)	129	Extreme Hazard



*A local neighborhood near Griffin, Georgia after the April, 2011 Tornadoes*

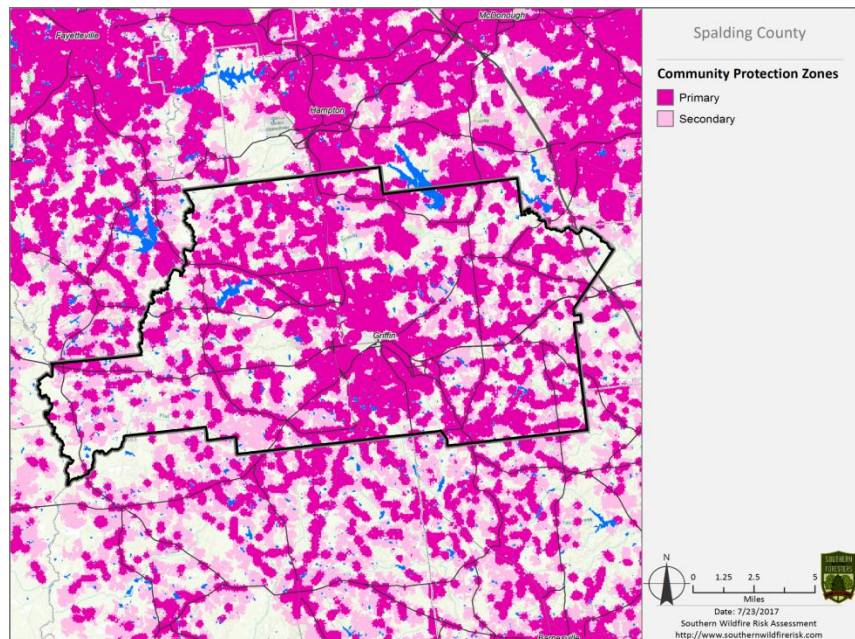


**Prescribed burning of woodlands is the best management practice to reduce hazardous fuel accumulation. The Georgia Forestry Commission can provide a prescribed burning plan, establish fire breaks, and can also provide equipment standby and assist with burning when personnel are available.**

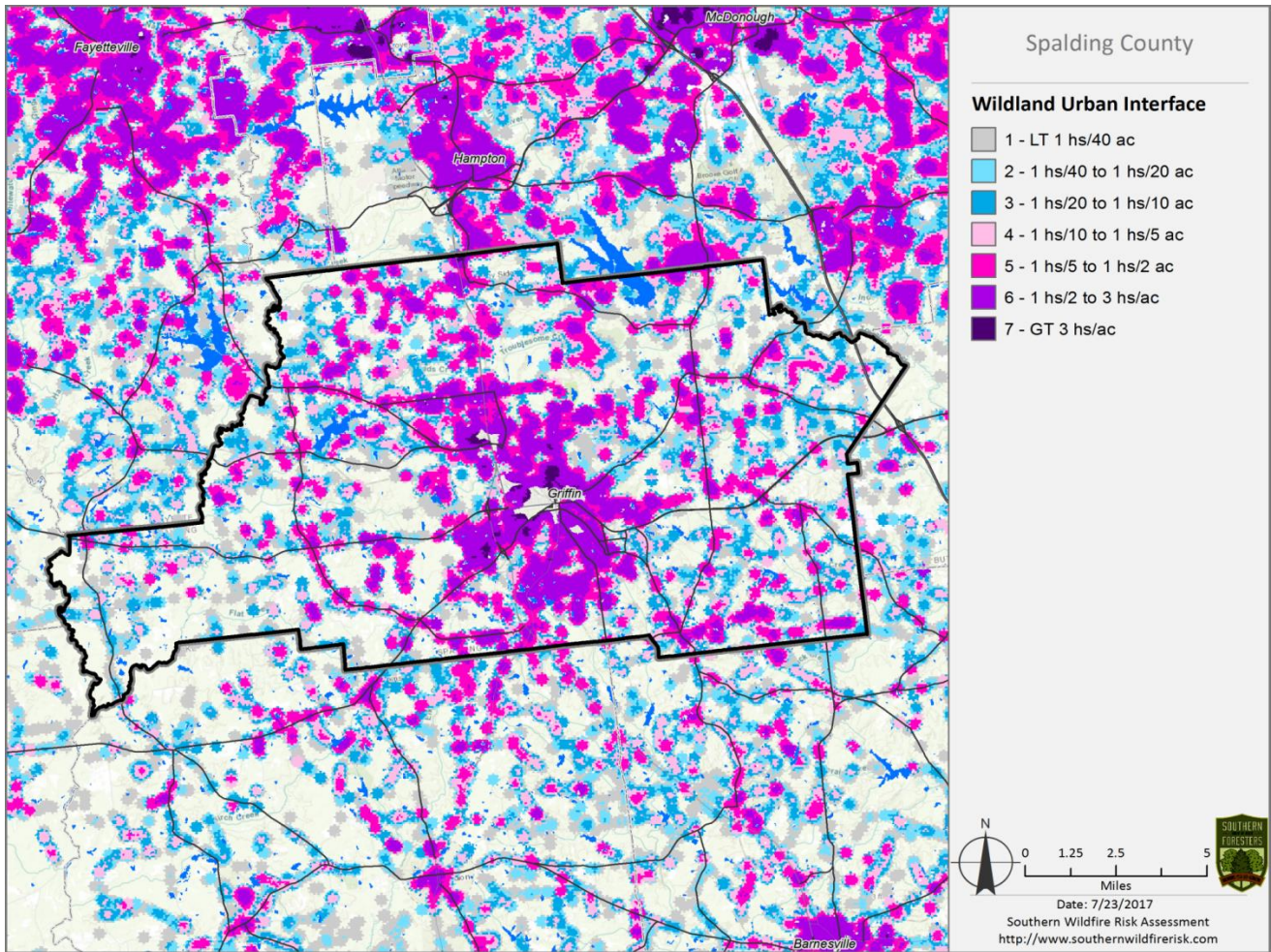
## VI. SOUTHERN WILDFIRE RISK ASSESSMENT & RISK HAZARD MAPS

The Southern Wildfire Risk Assessment tool, developed by the Southern Group of State Foresters, was released to the public in July 2014. This tool allows users of the Professional Viewer application of the Southern Wildfire Risk Assessment (SWRA) web Portal (SouthWRAP) to define a specific project area and summarize wildfire related information for this area. A detailed risk summary report is generated using a set of predefined map products developed by the Southern Wildfire Risk Assessment project which have been summarized explicitly for the user defined project area. A risk assessment summary was generated for Spalding County. The SouthWRAP (SWRA) products included in this report are designed to provide the information needed to support the following key priorities:

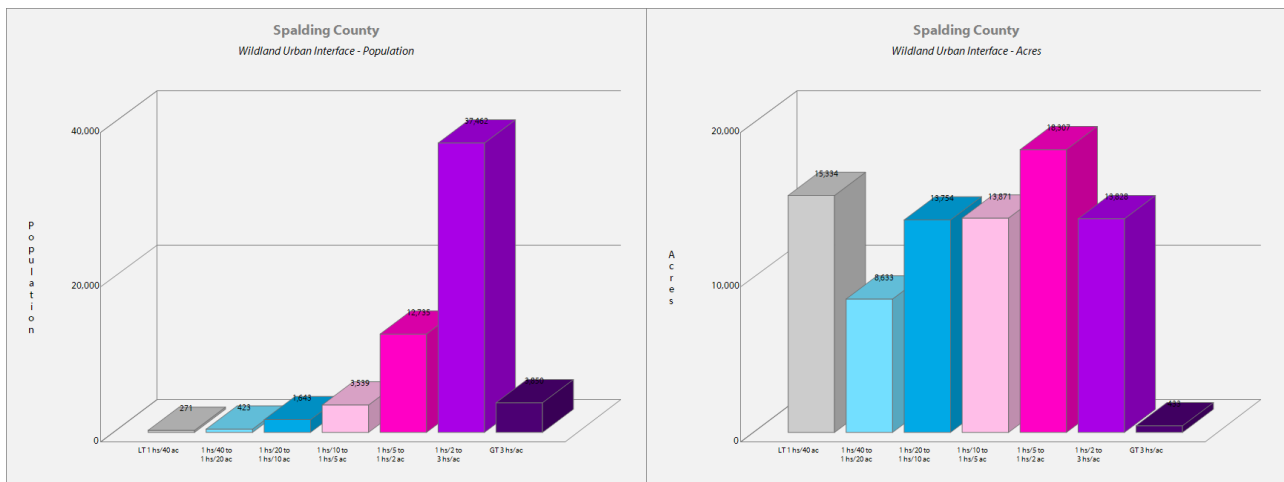
- Identify areas that are most prone to wildfire
- Identify areas that may require additional tactical planning, specifically related to mitigation projects and Community Wildfire Protection Planning
- Provide the information necessary to justify resource, budget and funding requests
- Allow agencies to work together to better define priorities and improve emergency response, particularly across jurisdictional boundaries
- Define wildland communities and identify the risk to those communities
- Increase communication and outreach with local residents and the public to create awareness and address community priorities and needs
- Plan for response and suppression resource needs
- Plan and prioritize hazardous fuel treatment programs



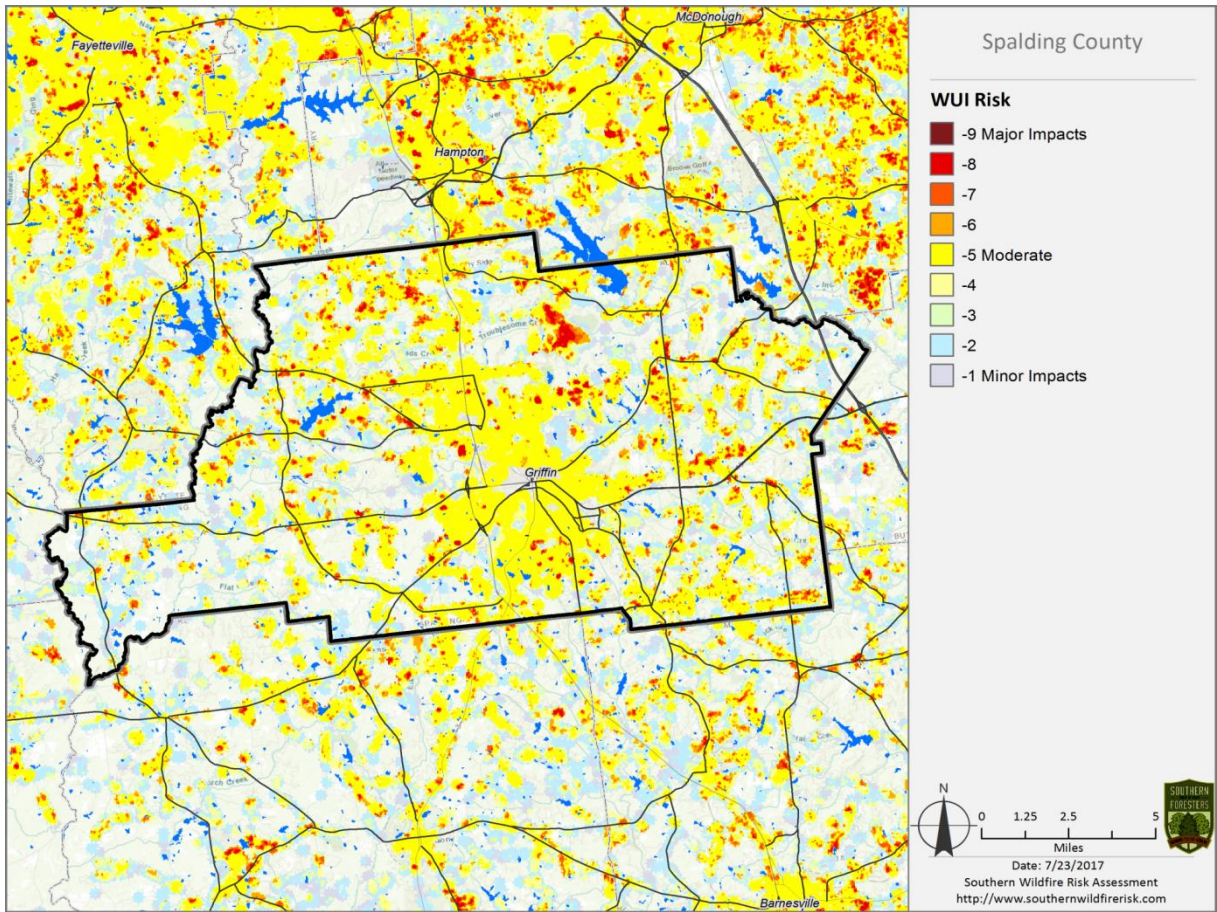
Community Protection Zones map from the Spalding County SWRA



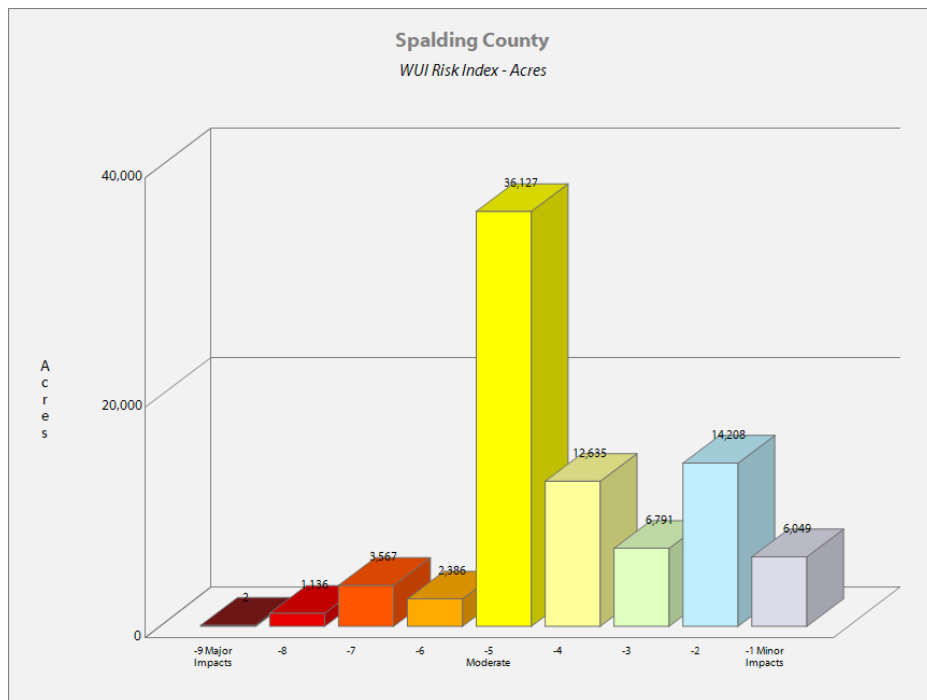
**Wildland Urban Interface (WUI) map and WUI Population and Acres graphs from the Spalding SWRA**

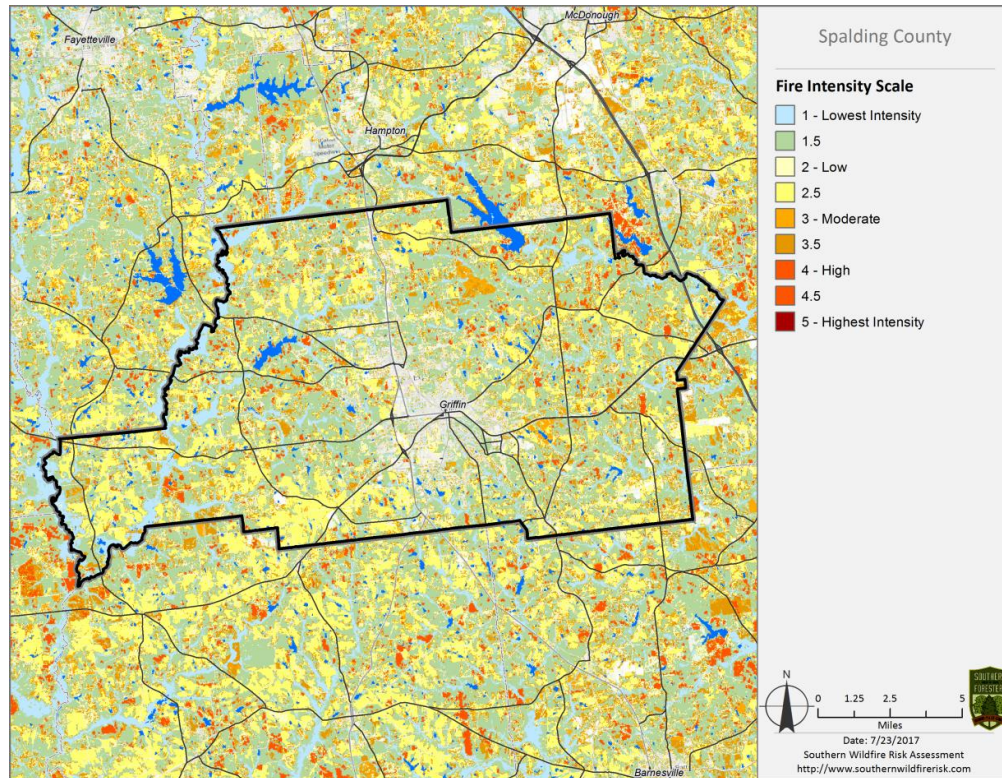




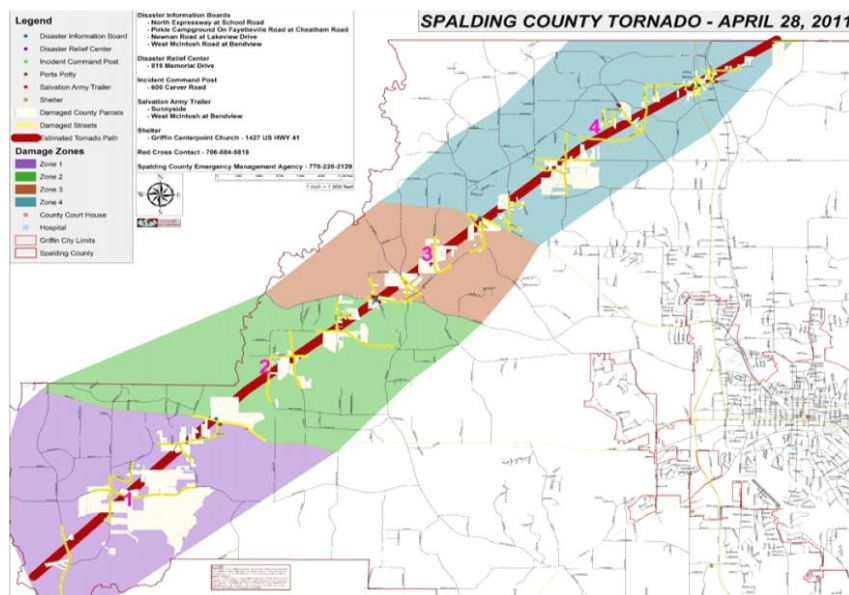


**Wildland Urban Interface (WUI) Risk map and WUI Risk Index-Acres graph**





Fire Intensity Scale map (above) and Spalding County Tornado map, April 2011 (below)



## VII. PRIORITIZED MITIGATION RECOMMENDATIONS

### Executive Summary

As Georgia continues to see increased growth from other areas seeking less crowded and warmer climates, new development will occur more frequently on forest and wildland areas. Spalding County will have an opportunity to significantly influence the wildland fire safety of new developments. It is important that new development be planned and constructed to provide for public safety in the event of a wildland fire emergency.

Over the past 20 years, much has been learned about how and why homes burn during wildland fire emergencies. Perhaps most importantly, case histories and research have shown that even in the most severe circumstances, wildland fire disasters can be avoided. Homes can be designed, built and maintained to withstand a wildfire even in the absence of fire services on the scene. The national Firewise Communities program is a national awareness initiative to help people understand that they don't have to be victims in a wildfire emergency. The National Fire Protection Association has produced two standards for reference: NFPA 1144 Standard for Reducing Structure Ignition Hazards from Wildland Fire. 2008 Edition and NFPA 1141 Standard for Fire Protection Infrastructure for Land Development in Suburban and Rural Areas.

When new developments are built in the Wildland/Urban Interface, a number of public safety challenges may be created for the local fire services: (1) the water supply in the immediate areas may be inadequate for fire suppression; (2) if the Development is in an outlying area, there may be a longer response time for emergency services; (3) in a wildfire emergency, the access road(s) may need to simultaneously support evacuation of residents and the arrival of emergency vehicles; and (4) when wildland fire disasters strike, many structures may be involved simultaneously, quickly exceeding the capability of even the best equipped fire departments.

The following recommendations were developed by the Spalding County Fire Department, Georgia Forestry Commission Chief Ranger, and by the Community Wildfire Protection Specialist as a result of surveying and assessing fuels and structures and by conducting meetings and interviews with county and city officials. A priority order was determined based on which mitigation projects would best reduce the hazard of wildfire in the assessment area.

**Proposed Community Hazard and Structural Ignitability Reduction Priorities**

Primary Protection for Community and Its Essential Infrastructure		
Treatment Area	Treatment Types	Treatment Method(s)
1. All Structures	Create minimum of 30-feet of defensible space**	Trim shrubs and vines to 30 feet from structures, trim overhanging limbs, replace flammable plants near homes with less flammable varieties, remove vegetation around chimneys.
2. Applicable Structures	Reduce structural ignitability**	Clean flammable vegetative material from roofs and gutters, store firewood appropriately, install skirting around raised structures, store water hoses for ready access, and replace pine straw and mulch around plantings with less flammable landscaping materials.
3. Community Clean-up Day National Wildfire Preparedness Day (1st Saturday in May)	Cutting, mowing, pruning**	Cut, prune, and mow vegetation in shared community spaces.
4. Driveway Access	Culvert installation	See that adequate lengths of culverts are installed to allow emergency vehicle access.
5. Road Access	Identify needed road improvements	As roads are upgraded, widen to minimum standards with at least 50 foot diameter cul-de-sacs or turn-around.

**Proposed Community Wildland Fuel Reduction Priorities**

Treatment Area	Treatment Types	Treatment Method(s)
1. Adjacent WUI Lands	Reduce hazardous fuels	Encourage prescribed burning for private landowners and industrial timberlands particularly adjacent to residential areas.  Seek grant for WUI mitigation team.
2. Railroad Corridors	Reduce hazardous fuels	Encourage railroads to manage their ROW by eliminating brush and grass through herbicide and mowing. Maintain firebreaks along ROW adjacent to residential areas.

**Proposed Improved Community Wildland Fire Response Priorities**

1. Water Sources	Dry Hydrants	Inspect, maintain and improve access to existing dry hydrants. Add signage along road to mark the hydrants. Locate additional dry hydrants as needed.
2. Fire Stations	Equipment	Wildland hand tools. Lightweight Wildland PPE Gear. Investigate need for “brush” trucks near communities at risk.
3. Water Sources	Drafting equipment	Investigate need for additional drafting pumps.
4. Personnel	Training	Obtain Wildland Fire Suppression training for fire personnel to include S130, S190, and S215. Ready Set Go training.
**Actions to be taken by homeowners and community stakeholders		

### Proposed Education and Outreach Priorities

1. Conduct “How to Have a Firewise Home” Workshop for County Residents
<p>Set up and conduct a workshop for homeowners that teach the principles of making homes and properties safe from wildfire. Topics for discussion include defensible space, landscaping, building construction, etc. Workshop will be scheduled for evenings or weekends when most homeowners are available and advertised through local media outlets.</p> <p>Distribute materials promoting Firewise practices and planning through local community and governmental meetings.</p>
2. Conduct “Firewise” Workshop for Community Leaders
<p>Arrange for GFC Firewise Coordinator to work with local community leaders and governmental officials on the importance of “Firewise Planning” in developing ordinances and codes in the county as the need arises. The International Wildland-Urban Code, established in 2012, was adopted in 2013 in Georgia for counties to use.</p> <p>Identified “communities-at-risk” are Moore Rd. Community and Dundee Lake, and should be sought after for inclusion in the National Firewise Communities Program.</p>
3. Spring Clean-up Event

Conduct clean-up event every spring involving the Georgia Forestry Commission, Spalding County Fire Departments, and local residents of the city of Griffin and Spalding County. Set up information table with educational materials and refreshments. Initiate the event with a morning briefing by GFC Firewise coordinator and local fire officials detailing plans for the day and safety precautions. National Wildfire Preparedness Day, sponsored nationally by NFPA, is held the First Saturday in May. Activities to include the following:

- Clean flammable vegetative material from roofs and gutters
- Trim shrubs and vines to 30 feet away from structures
- Trim overhanging limbs
- Clean hazardous or flammable debris from adjacent properties

#### 4. Informational Packets

Develop and distribute informational packets to be distributed by realtors and insurance agents. Included in the packets are the following:

- Be Firewise Around Your Home
- Firewise Guide to Landscape and Construction
- Firewise Communities materials
- Ready Set Go materials
- Fire Adapted Community materials

#### 5. Wildfire Protection Display

Create and exhibit a display for the general public at the local events. Display can be independent or combined with the Georgia Forestry Commission display.

#### 6. Media

Invite the local and regional news media to community “Firewise” functions for news coverage and regularly submit press releases documenting wildfire risk improvements in Spalding County. Utilize social media to reach the younger population.

## VIII. ACTION PLAN

### Roles and Responsibilities

The following roles and responsibilities have been developed to implement the action plan:

Role	Responsibility
Hazardous Fuels and Structural Ignitability Reduction	
Spalding County WUI Fire Council	Create this informal team or council comprised of residents, GFC officials, County Fire department officials, a representative from the city and county government and the EMA Director for Spalding County. Meet periodically to review progress towards mitigation goals, appoint and delegate special activities, work with federal, state, and local officials to assess progress and develop future goals and action plans. Work with residents to implement projects and Firewise activities.
Key Messages to focus on	<ol style="list-style-type: none"> <li>1 Defensible Space and Firewise Landscaping</li> <li>2 Debris Burning Safety</li> <li>3 Firewise information for homeowners</li> <li>4 Prescribed burning benefits</li> </ol>
Communications objectives	<ol style="list-style-type: none"> <li>1 Create public awareness for fire danger and defensible space issues</li> <li>2 Identify most significant human cause fire issues</li> <li>3 Enlist public support to help prevent these causes</li> <li>4 Encourage people to employ fire prevention and defensible spaces in their communities.</li> </ol>
Target Audiences	<ol style="list-style-type: none"> <li>1 Homeowners</li> <li>2 Forest Landowners and users</li> <li>3 Civic Groups</li> <li>4 School Groups</li> </ol>
Methods	<ol style="list-style-type: none"> <li>1 News Releases</li> <li>2 Personal Contacts</li> <li>3 Key messages and prevention tips</li> <li>4 Visuals such as signs, brochures and posters</li> <li>5 Social media</li> </ol>

Spring Clean-up Day (National Wildfire Preparedness Day, 1 <sup>st</sup> Saturday in May)	
Event Coordinator	Coordinate day's events and schedule, catering for cookout, guest attendance, and moderate activities the day of the day of the event.
Event Treasurer	Collect funds from residents to cover food, equipment rentals, and supplies.
Publicity Coordinator	Advertise event through neighborhood newsletter, letters to officials, and public service announcements (PSAs) for local media outlets. Publicize post-event through local paper and radio PSAs.
Work Supervisor	Develop volunteer labor force of community residents; develop labor/advisory force from Georgia Forestry Commission, Spalding County Fire Departments, and Emergency Management Agency. Procure needed equipment and supplies. In cooperation with local city and county officials, develop safety protocol. Supervise work and monitor activities for safety the day of the event.

### Funding Needs

The following funding is needed to implement the action plan:

Project	Estimated Cost	Potential Funding Source(s)
1. Create a minimum of 30 feet of defensible space around structures	Varies	Residents will supply labor and fund required work on their own properties.
2. Reduce structural ignitability by cleaning flammable vegetation from roofs and gutters; appropriately storing firewood, installing skirting around raised structures, storing water hoses for ready access, replacing pine needles and mulch around plantings with less flammable material.	Varies	Residents will supply labor and fund required work on their own properties.
3. Amend codes and ordinances to provide better driveway access, increased visibility of house numbers, properly stored firewood, minimum defensible space brush clearance, required Class A roofing materials and skirting around raised structures, planned maintenance of community lots.	No Cost	To be adopted by city and county government.
4. Spring Cleanup Day	Varies	Community Business Donations.
5. Fuel Reduction Activities	\$15 / acre	FEMA & USFS Grants



## Assessment Strategy

To accurately assess progress and effectiveness for the action plan, the Spalding County WUI Fire Council will implement the following:

- Annual wildfire risk assessment will be conducted to re-assess wildfire hazards and prioritize needed actions.
- Mitigation efforts that are recurring (such as mowing, burning, and clearing of defensible space) will be incorporated into an annual renewal of the original action plan.
- Mitigation efforts that could not be funded in the requested year will be incorporated into the annual renewal of the original action plan.
- Continuing educational and outreach programs will be conducted and assessed for effectiveness. Workshops will be evaluated based on attendance and post surveys that are distributed by mail 1 month and 6 months following workshop date.
- The Spalding County WUI Fire Council will publish an annual report detailing mitigation projects initiated and completed, progress for ongoing actions, funds received, funds spent, and in-kind services utilized. The report will include a “state of the community” section that critically evaluates mitigation progress and identifies areas for improvement. Recommendations will be incorporated into the annual renewal of the action plan.
- An annual survey will be distributed to residents soliciting information on individual mitigation efforts on their own property (e.g., defensible space). Responses will be tallied and reviewed at the next Spalding County WUI Council meeting. Needed actions will be discussed and delegated.

This plan should become a working document that is shared by local, state, and federal agencies that will use it to accomplish common goals. An agreed-upon schedule for meeting to review accomplishments, solve problems, and plan for the future should extend beyond the scope of this plan. Without this follow up this plan will have limited value

## **IX. MITIGATION ASSISTANCE & GRANT FUNDING**

Community Protection Grant: US Forest Service sponsored prescribed fire program. Communities with “at-risk” properties that lie within ten miles of a National Forest, National Park Service or Bureau of Land Management tracts may apply with the Georgia Forestry Commission to have their land prescribe burned free-of-charge. Forest mastication, where it is practical with Georgia Forestry Commission equipment, is also available under this grant program.

FEMA Mitigation Policy MRR-2-08-01: through GEMA – Hazard Mitigation Grant Program (HMGP) and Pre-Disaster Mitigation Program (PDM).

1. To provide technical and financial assistance to local governments to assist in the implementation of long term, cost effective hazard mitigation accomplishments.
2. This policy addresses wildfire mitigation for the purpose of reducing the threat to all-risk structures through creating defensible space, structural protection through the application of ignition resistant construction and limited hazardous fuel reduction to protect life and property.
3. With a completed registered plan (addendum to the State Plan) counties can apply for pre-mitigation funding. They will also be eligible for HMGP funding if the county is declared under a wildfire disaster.

Georgia Forestry Commission: Plowing and prescribed burning assistance, as well as forest mastication, can be obtained from the GFC as a low-cost option for mitigation efforts.

The Georgia Forestry Commission Firewise Community Mitigation Assistance Grants – Nationally recognized Firewise Communities can receive up to \$5000 grants to help address potential wildfire risk reduction projects. Grant submission can be made through local Georgia Forestry Commission offices or your Regional Wildfire Prevention Specialist.

The International Association of Fire Chiefs (IAFC) and American International Group, Inc. (AIG) offer grants to assist local fire departments in establishing or enhancing their community fuels mitigation programs while educating members of the community about community wildfire readiness and encouraging personal action.

## **X. GLOSSARY**

*Community-At-Risk – A group of two or more structures whose proximity to forested or wildland areas places homes and residents at some degree of risk.*

*Critical Facilities – Buildings, structures or other parts of the community infrastructure that require special protection from an approaching wildfire.*

*CWPP – The Community Wildfire Protection Plan.*

*Defensible Space – The immediate landscaped area around a structure (usually a minimum of 30 ft.) kept “lean, clean and green” to prevent an approaching wildfire from igniting the structure.*

*Dry Hydrant - A non-pressurized pipe system permanently installed in existing lakes, ponds and streams that provides a suction supply of water to a fire department tank truck.*

*FEMA – The Federal Emergency Management Agency whose mission is to support our citizens and first responders to ensure that as a nation we work together to build, sustain, and improve our capability to prepare for, protect against, respond to, recover from, and mitigate all hazards.*

*Fire Adapted Community – A community fully prepared for its wildfire risk by taking actions to address safety, homes, neighborhoods, businesses and infrastructure, forest, parks, open spaces, and other community assets.*

*Firewise Program – A national initiative with a purpose to reduce structural losses from wildland fires.*

*Firewise Community/USA – A national recognition program for communities that take action to protect themselves from wildland fire. To qualify a community must have a wildfire risk assessment by the Georgia Forestry Commission, develop a mitigation action plan, have an annual firewise mitigation/education event, have dedicated firewise leadership, and complete the certification application.*

*Fuels – All combustible materials within the wildland/urban interface or intermix including, but not limited to, vegetation and structures.*

*Fuel Modification – Any manipulation or removal of fuels to reduce the likelihood of ignition or the resistance to fire control.*

*Hazard & Wildfire Risk Assessment – An evaluation to determine an area’s (community’s) potential to be impacted by an approaching wildland fire.*

*Healthy Forests Initiative - Launched in August 2002 by President Bush (following passage of the Healthy Forests Restoration Act by Congress) with the intent to reduce the risks severe wildfires pose to people, communities, and the environment.*

Home Ignition Zone (Structure Ignition Zone) - *Treatment area for wildfire protection. The “zone” includes the structure(s) and their immediate surroundings from 0-200 ft.*

Mitigation – *An action that moderates the severity of a fire hazard or risk.*

National Fire Plan – *National initiative, passed by Congress in the year 2000, following a landmark wildland fire season, with the intent of actively responding to severe wildland fires and their impacts to communities while ensuring sufficient firefighting capacity for the future.*

National Fire Protection Association (NFPA) - *An international nonprofit organization established in 1896, whose mission is to reduce the worldwide burden of fire and other hazards on the quality of life by providing and advocating consensus codes and standards, research, training, and education.*

National Wildfire Preparedness Day – *Started in 2014 by the National Fire Protection Association as a day for communities to work together to prepare for the approaching wildfire season. It is held annually on the first Saturday in May.*

Prescribed Burning (prescribed fire) –*The use of planned fire that is deliberately set under specific fuel and weather condition to accomplish a variety of management objectives and is under control until it burns out or is extinguished.*

Ready, Set, Go - *A program fire services use to help homeowners understand wildfire preparedness, awareness, and planning procedures for evacuation.*

Southern Group of State Foresters – *Organization whose members are the agency heads of the forestry agencies of the 13 southern states, Puerto Rico and the Virgin Islands.*

Stakeholders– *Individuals, groups, organizations, businesses or others who have an interest in wildland fire protection and may wish to review and/or contribute to the CWPP content.*

Wildfire or Wildland Fire – *An unplanned and uncontrolled fire spreading through vegetative fuels.*

Wildland/Urban Interface - *The presence of structures in locations in which the authority having jurisdiction (AHJ) determines that topographical features, vegetation, fuel types, local weather conditions and prevailing winds result in the potential for ignition of the structures within the area from flames and firebrands from a wildland fire (NFPA 1144, 2008).*

## **XI. SOURCES OF INFORMATION**

Publications/Brochures/Websites:

- FIREWISE materials can be ordered at [www.firewise.org](http://www.firewise.org)
- Georgia Forestry Commission [www.georgiafirewise.org](http://www.georgiafirewise.org)
- Examples of successful wildfire mitigation programs can be viewed at the website for National Database of State and Local wildfire Hazard Mitigation Programs sponsored by the U.S. Forest Service and the Southern Group of State Foresters [www.wildfireprograms.com](http://www.wildfireprograms.com)
- Information about a variety of interface issues (including wildfire) can be found at the USFS website for Interface South: [www.interfacesouth.org](http://www.interfacesouth.org)
- Information on codes and standards for emergency services including wildfire can be found at [www.nfpa.org](http://www.nfpa.org)
- Information on FEMA Assistance to Firefighters Grants (AFG) can be found at [www.firegrantsupport.com](http://www.firegrantsupport.com)
- Information on National Fire Plan grants can be found at <http://www.federalgrantswire.com/national-fire-plan--rural-fire-assistance.html>
- Southern Wildfire Risk Assessment website SouthWRAP [www.SouthernWildfireRisk.com](http://www.SouthernWildfireRisk.com)
- Fire Adapted Communities [www.fireadapted.org](http://www.fireadapted.org)
- Ready, Set, Go [www.wildlandfirersg.org](http://www.wildlandfirersg.org)
- National Wildfire Preparedness Day [www.wildfireprepdlay.org](http://www.wildfireprepdlay.org)

### **Appended Documents:**

Spalding County Southern Wildfire Risk Assessment Summary Report (SWRA)

All files that make up this plan are available in an electronic format from the Georgia Forestry Commission.



**Georgia Forestry Commission**  
5645 Riggins Mill Rd.  
Dry Branch, GA. 31020

**1-800-GA-TREES**  
**GaTrees.org**

*The Georgia Forestry Commission provides leadership, service, and education in the protection and conservation of Georgia's forest resources.*

*An Equal Opportunity Employer and Service Provider*