

GEORGIA FORESTRY
COMMISSION



Community Wildfire Protection Plan

An Action Plan for Wildfire Mitigation and Conservation of Natural Resources

Upson County, Georgia

A Program of the Georgia Forestry Commission
with support from the U.S. Forest Service

+



FEBRUARY, 2017

SIGNATURE PAGE

Honorable Norman Allen, Chairman
Upson County Board of County Commissioners

Date

Honorable John David Stallings, Mayor
City of Thomaston

Date

Jim Wheelless, County Manager
Upson County

Date

Renee Harris, Chief
Thomaston Fire Department

Date

Martha Anne McCarty
Upson County EMA Director

Date

Jeffery Kenerly
Chief Ranger
Georgia Forestry Commission

Date

Prepared by;

Jeff Kenerly, Upson County Chief Ranger
Jeff Sanders, Upson County Ranger 1
Eric Mosley, CWPP Specialist
Beryl Budd, Wildfire Prevention Specialist (Revised 2017)

Georgia Forestry Commission
2429 Yatesville Highway
Thomaston GA 30286

The following report is a collaborative effort among various entities; the representatives listed below comprise the core decision-making team responsible for this report and mutually agree on the plan's contents:

Maurice Raines
County Commission Chair, Upson County

Hays Arnold
Mayor, City of Thomaston

Eddie Lifsey
Fire Chief, City of Thomaston

William G. Mitcham
Upson County EMA Director

Jeff Kenerly
Chief Ranger, Upson County Forestry Unit

Jeff Sanders
Ranger 1, Upson County Forestry Unit

PLAN CONTENTS

I. Objectives	1
II. Community Collaboration	1
III. Community Background and Wildfire History.....	3
IV. Community Base Maps.....	8
V. Community Wildfire Risk Assessment	11
VI. Southern Wildfire Risk Assessment Summary.....	15
VII. Prioritized Mitigation Recommendations	18
VIII. Action Plan	22
IX. Grant Funding	24
X. Glossary	25
IX. Sources of Information	27

Appended Documents:

Upson County Wildfire Pre-suppression Plan

NFPA 1141 Standard for Fire Protection Infrastructure for Land Development in Suburban and Rural Areas.

Upson County Southern Wildfire Risk Assessment Report

.....

I. OBJECTIVES

A Community Wildfire Protection Plan (CWPP) provides a community with a road map to reduce its risk from wildfire. A CWPP is designed through collaboration between state and local fire agencies, homeowners and landowners, and other interested parties such as city councils, utilities, homeowners associations, environmental organizations, and other local stakeholders. The plan identifies strategic sites and methods for risk reduction and structural protection projects across jurisdictional boundaries.

Comprehensive plans provide long-term guidance for growth, reflecting a community's values and future expectations. The plan implements the community's values and serves to protect natural and community resources and public safety. Planning also enables communities to address their development patterns in the Wildland Urban Interface and determine how they can reduce their risk through alternative development patterns. The formal legal standing of the plan and its central role in local government decision making underscores the opportunity to use this planning process as an effective means for reducing wildfire risk.

The mission of the following plan is to set clear priorities for the implementation of wildfire mitigation in Upson County. The plan includes prioritized recommendations for the appropriate types and methods of fuel reduction and structure ignitability reduction that will protect this community and its essential infrastructure. It also includes a plan for wildfire suppression. Specifically, the plan includes community-centered actions that will:

- Educate citizens on wildfire, its risks, and ways to protect lives and properties,
- Support fire rescue and suppression entities,
- Focus on collaborative decision-making and citizen participation,
- Develop and implement effective mitigation strategies, and
- Develop and implement effective community ordinances and codes.

II. COMMUNITY COLLABORATION

Wildfire risk reduction strategies are most effective when approached collaboratively – involving groups of residents, elected officials, community decision makers, emergency managers, and natural resource managers –and when combined with effective outreach approaches. Collaborative approaches make sense as the initial focus of any community attempting to work toward wildfire risk reduction. In all Community Wildfire Protection Plan collaborations, the goal is to cooperatively identify problems and reach a consensus for mutual action. In the case of wildfire mitigation, a reduction in the wildfire risk to the community's lives, houses, and property is the desired outcome.

The collaborative core team convened on August 20, 2009 to assess risks and develop the Community Wildfire Protection Plan. The group is comprised of representatives from local government, local fire authorities, and the state agency responsible for forest management.

Below are the groups included in the task force:

Upson County Government
County Fire Department
Emergency Management
Board of County Commissioners
City of Thomaston
Fire Department
Georgia Forestry Commission

It was decided to conduct community assessments on the basis of the on high risk communities and the individual fire districts in the county. The Chief of the Thomaston Fire Department reconvened on September 29, 2010 for the purpose of completing the following:

- | | |
|------------------------|---|
| Risk Assessment | Assessed wildfire hazard risks and prioritized mitigation actions. The wildfire risk assessment will help homeowners, builders, developers, and emergency personnel whether the area needs attention and will help direct wildfire risk reduction practices to the areas at highest risk. |
| Fuels Reduction | Identified strategies for coordinating fuels treatment projects. |
| Structure Ignitability | Identified strategies for reducing the ignitability of structures within the Wildland interface. |
| Emergency Management | Forged relationships among local government and fire districts and developed/refined a pre-suppression plan. |
| Education and Outreach | Developed strategies for increasing citizen awareness and action and to conduct homeowner and community leader workshops. Outreach and education programs are designed to raise awareness and improve audience knowledge of wildfire risk reduction needs and practices. In the best cases, education and outreach programs will influence attitudes and opinions and result in effective action. |

III. COUNTY BACKGROUND AND WILDFIRE HISTORY

County Background

Upson County, in west central Georgia, was established by an act of the state legislature on December 15, 1824. The Treaty of Indian Springs (1821) between the United States and the Creek Indians gave the government the land that extended from the Ocmulgee River to the Flint River through middle Georgia. Upson County was created from Pike and Crawford counties. Many settlers were drawn to the area by the lottery system used to settle the acquired lands. The state's fifty-ninth county was named in honor of the noted Georgia lawyer Stephen Upson (1784/5-1824) just four months after his death. It is also the birthplace of John B. Gordon, a major general in the Confederate army and a governor of Georgia.



In March 1825 the justices of the inferior court bought land lot 217 in the Tenth District to build the courthouse and the jail. Around this lot grew Thomaston, the county seat. Incorporated June 11, 1825, the town was named for General Jett Thomas, a hero of the War of 1812 (1812-15).



The majority of the settlers to Upson County came from the eastern counties of Georgia, between the Oconee River and Augusta. Some were wealthy plantation owners who also owned many slaves. Farming the rich soil of the eastern section of Upson County, around the town of The Rock and along the Flint River, they primarily grew cotton. Other settlers came from North Carolina and South Carolina. The first cotton mill in Upson County, the Waymanville or Franklin Factory, was built on Tobler Creek in 1833, and in 1835 a group of New Englanders arrived to manufacture textiles.

The Old Alabama Stagecoach Road, a well-traveled stagecoach and wagon-freight line between Augusta and Columbus, ran from the northeastern section of Upson County, crossing the Flint River at Double Bridges in the southwest. Double Bridges is the site where two bridges spanned either side of Owen's Island in the middle of the Flint River; a brief Civil War (1861-65) cavalry skirmish took place there. On April 18, 1865, Union raiders began three days of devastation in Upson County. Major General James Harrison Wilson's cavalry was headed toward Macon; its task was to destroy the agricultural and industrial facilities in the South. Fifty men of the First Battalion Georgia Cavalry Reserves stood to defend the bridges. The defenders fired a few scattered shots at the larger Union forces before fleeing. Homes were pillaged and burned, and several factories were destroyed, including the Waymanville cotton mill.



Auchumpkee Covered Bridge

After the war mills continued to be an important part of the county's economy.

Thomaston Mills was a major employer in the county from its beginning in 1899 until 2000, when the company declared bankruptcy. Martha Mills, a manufacturer of tire cord fabric, began operation in 1927 and continues to be a large employer (Martha Mills was bought by B. F. Goodrich, later WesTek, in 1929). In the 1920s the peach industry thrived in Upson County, but peaches all but vanished in the county with the onset of the Great Depression in the 1930s, as orchard laborers found work in the mills. Peach orchards were cut down to make room for timber stands.



Thomaston Peaches

In 1930 a history of the county, *History of Upson County, Georgia*, was sponsored by the Daughters of the American Revolution and coauthored by Evelyn Hanna, a well-known author of romantic fiction



Sprewell Bluff State Park

Upson County is home to Flint River Technical College, and several sites draw tourism to the area. Sprewell Bluff is a 200-acre area of climbing river bluffs formed by the Flint River as it cuts through Oak Mountain. A three-mile trail winds along the bank. The Sprewell Bluff State Park offers 1,372 acres for fishing, hiking, picnicking, horseshoes, and volleyball. Auchumpkee Covered Bridge, located in the southeastern part of the county, is an exact replica of the 1892 bridge that was destroyed in the floods that swept through the state in 1994. Federal disaster-relief money paid for covered-bridge craftsman Arnold M. Graton to reconstruct the bridge.

According to the 2000 U.S. census, the population of Upson County is 27,597 (70.6 percent white, 27.9 percent black, and 1.2 percent Hispanic).

(Courtesy *New Georgia Encyclopedia*)

Wildfire History

Recent data show that a majority of the fastest growing areas in the U.S. are in wildfire-prone environments. It is not a surprise that some of these fastest growing areas are in Georgia. In last decade of the 20th Century, Georgia's population increased substantially. Homeowners in Georgia must contend with natural hazards including wildfire, tornados, and flooding. This combination of factors – burgeoning population, abundant natural areas, development pressures, and lack of public awareness makes Georgia a perfect state for creating solutions to various hazards. Georgia is looked to throughout the southern region as a leader in comprehensive and hazard mitigation planning.

Many of Georgia's existing and new residents living in the urban interface are unaware of the vital role fire plays in our landscape and that their homes are extremely vulnerable to wildfire damage. Balancing development pressures with wildfire risk reduction and education creates a unique challenge for local governments, emergency managers, and wildfire management agencies such as the Georgia Forestry Commission.

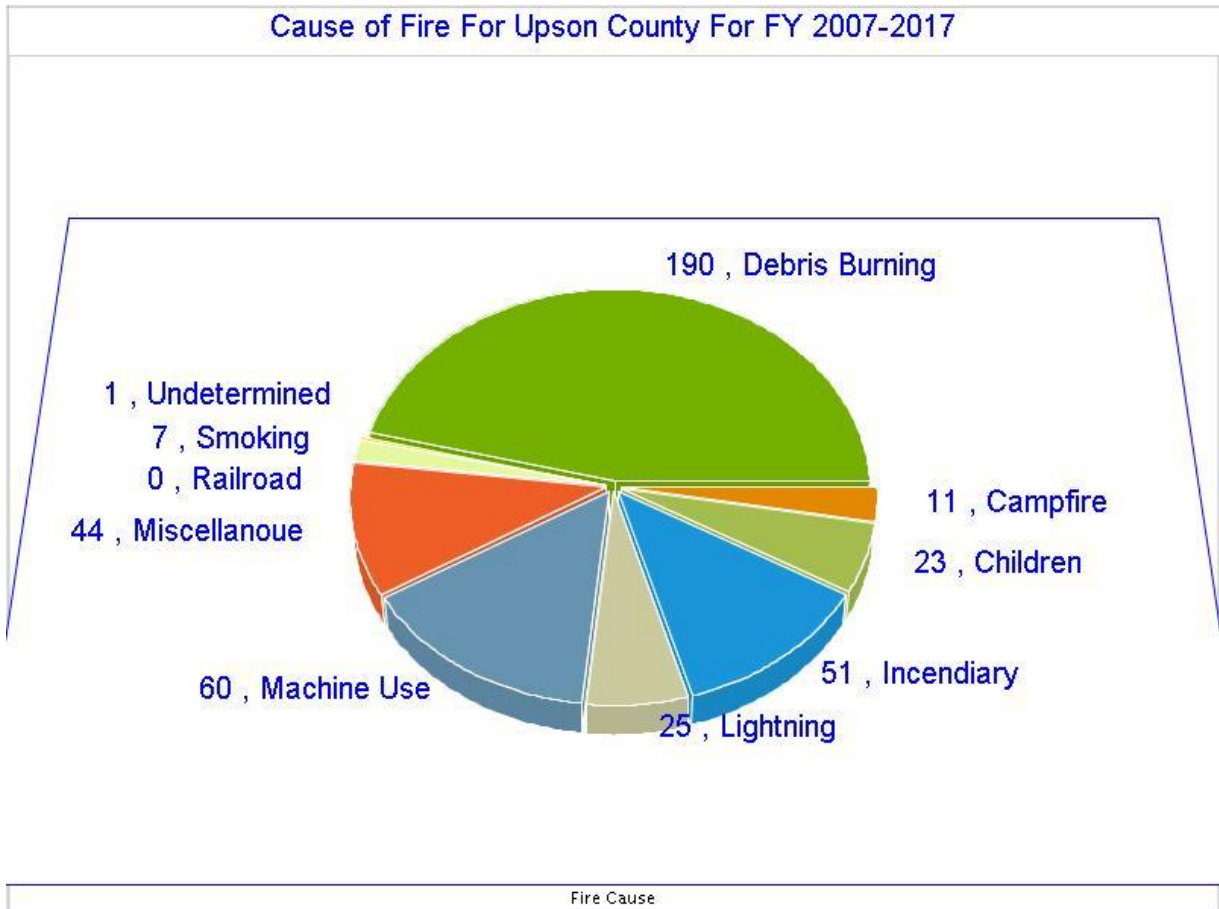
County = Upson	Cause	Fires	Acres	Fires 5 Yr Avg	Acres 5 Yr Avg
Campfire	Campfire	0	0.00	0.80	10.19
Children	Children	2	6.65	1.20	5.52
Debris: Ag Fields, Pastures, Orchards, Etc	Debris: Ag Fields, Pastures, Orchards, Etc	0	0.00	0.60	0.31
Debris: Construction Land Clearing	Debris: Construction Land Clearing	2	13.69	1.00	2.85
Debris: Escaped Prescribed Burn	Debris: Escaped Prescribed Burn	3	176.90	2.40	52.11
Debris: Household Garbage	Debris: Household Garbage	0	0.00	0.20	0.09
Debris: Other	Debris: Other	1	4.32	0.40	3.02
Debris: Residential, Leafpiles, Yard, Etc	Debris: Residential, Leafpiles, Yard, Etc	6	7.36	5.20	18.79
Debris: Site Prep - Forestry Related	Debris: Site Prep - Forestry Related	2	0.40	2.00	8.84
Incendiary	Incendiary	0	0.00	2.40	12.05
Lightning	Lightning	3	7.45	0.80	1.53
Machine Use	Machine Use	1	0.20	3.40	10.14
Miscellaneous	Miscellaneous	0	0.00	1.40	5.98
Miscellaneous: Cutting/Welding/Grinding	Miscellaneous: Cutting/Welding/Grinding	0	0.00	0.40	0.00
Miscellaneous: Other	Miscellaneous: Other	0	0.00	0.20	0.01
Miscellaneous: Power lines/Electric fences	Miscellaneous: Power lines/Electric fences	0	0.00	0.40	0.26
Miscellaneous: Structure/Vehicle Fires	Miscellaneous: Structure/Vehicle Fires	1	0.01	0.60	0.31
Miscellaneous: Woodstove Ashes	Miscellaneous: Woodstove Ashes	0	0.00	0.40	3.35
Smoking	Smoking	0	0.00	0.20	1.22
Undetermined	Undetermined	0	0.00	0.20	0.02
Totals for County: Upson Year: 2016		21	216.98	24.20	136.59

Over the past fifty years, Upson County has averaged 73 reported wildfires per year. The occurrence of these fires is fairly uniform throughout the year with a slight peak in the months of February and March and a slight decrease during the fall months. These fires have burned an average of 234 acres annually. While the numbers of fires remain fairly similar every month, there is a marked difference in the monthly acreage lost. The monthly acres lost during the late winter through summer period

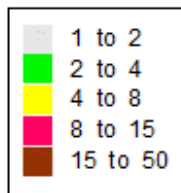
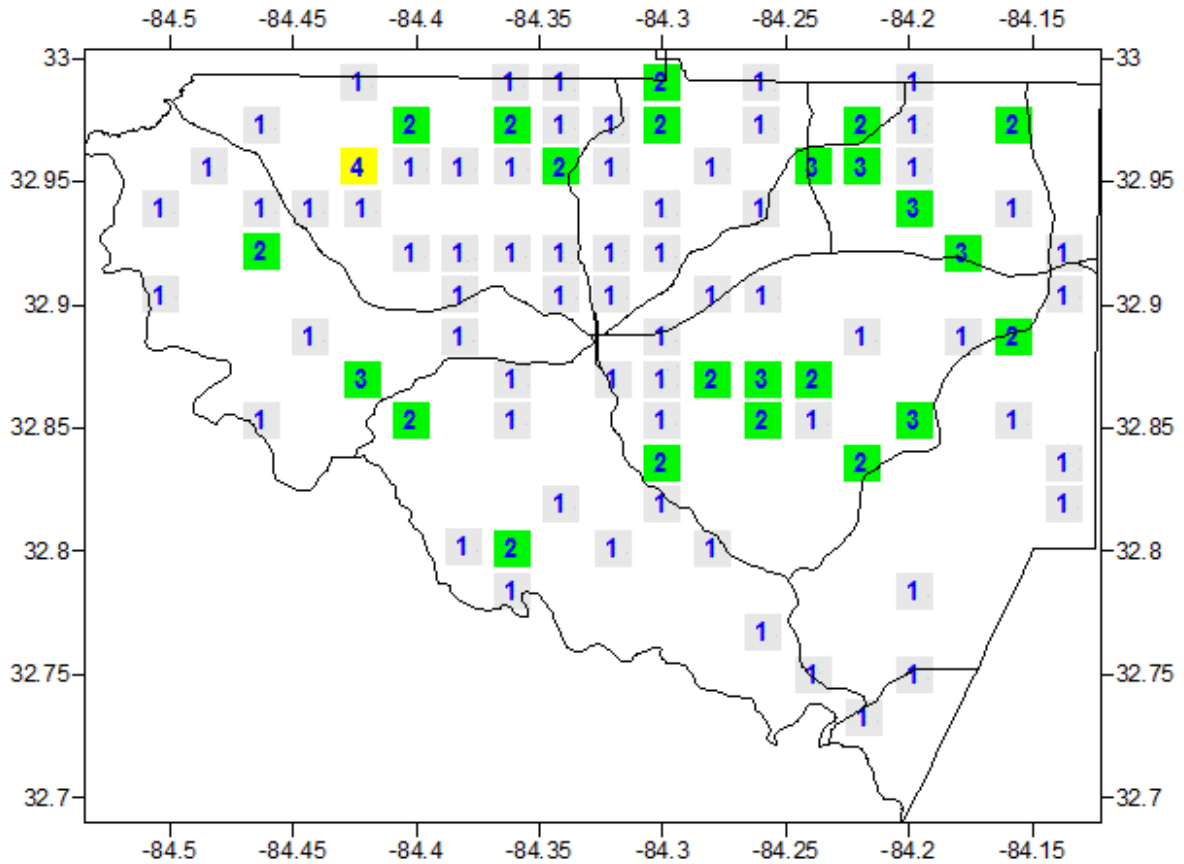
show a ten fold increase over the acres lost during the fall and early winter. Additionally while the annual numbers of fires have not increased noticeably during the 50 year period that records are available, the annual acreage lost appears to have increased in later years. This perhaps a result of the decrease in the practice of prescribed burning and the resultant increase in wildland fuel loadings. Despite this alarming trend in fire behavior, more homes are being built outside of traditional communities into the wildland urban interface.

Alarmingly the leading causes of these fires in Upson County, were arson and debris burning causing which came to almost 60 percent of all fire reported. Though these causes are a bit disturbing, local efforts of outreach and education can easily curb this problem.

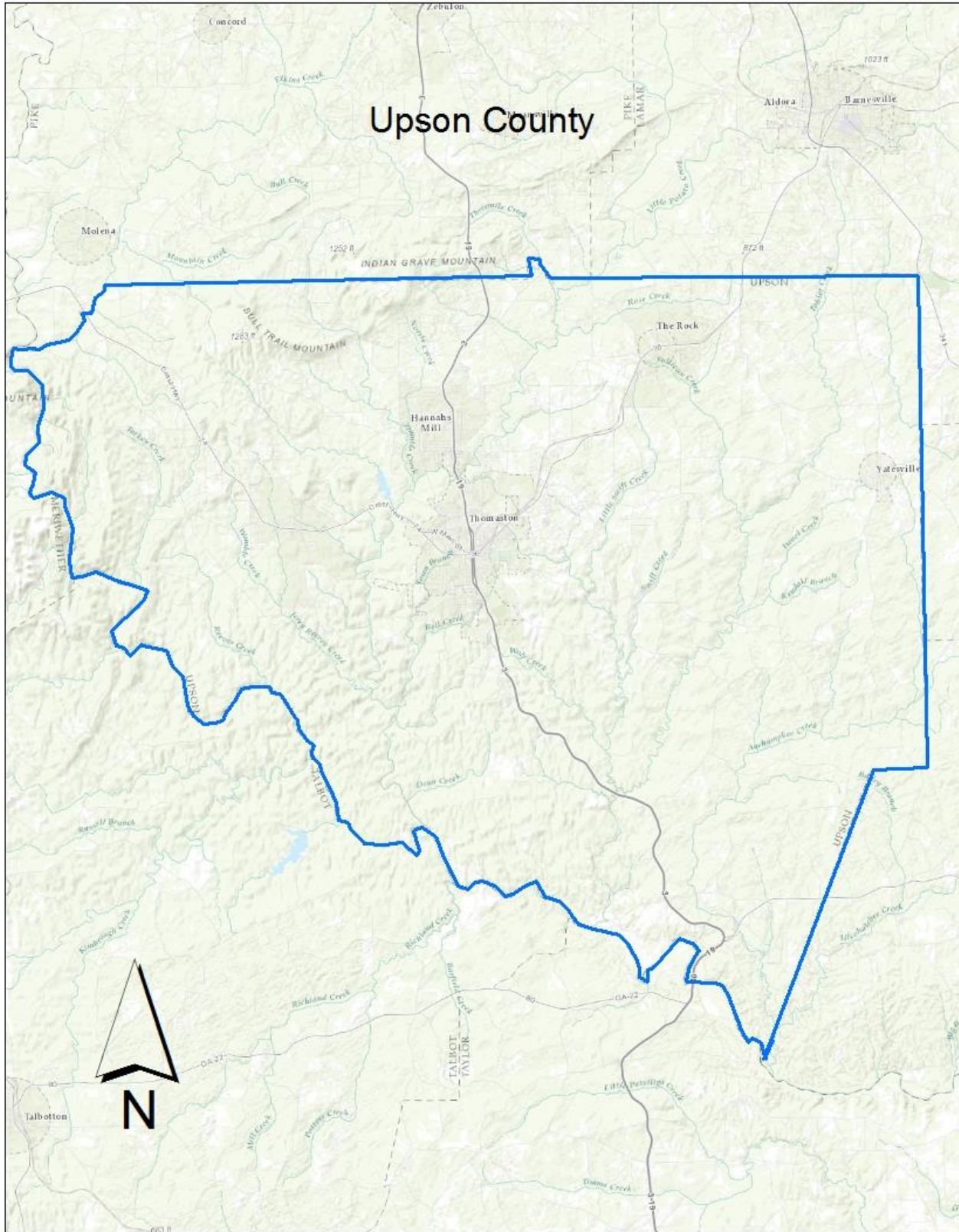
Georgia Forestry Commission Wildfire Records show that in the past five years, 3 Homes have been lost or damaged by wildfire in Upson County resulting in estimated losses of \$40,000 along with 3 outbuildings valued at \$2,000. According to reports during this period 13 homes have been directly or indirectly threatened by these fires. Additionally 3 vehicles valued at \$550 were lost. This is a substantial loss of non timber property attributed to wildfires in UpsonCounty.

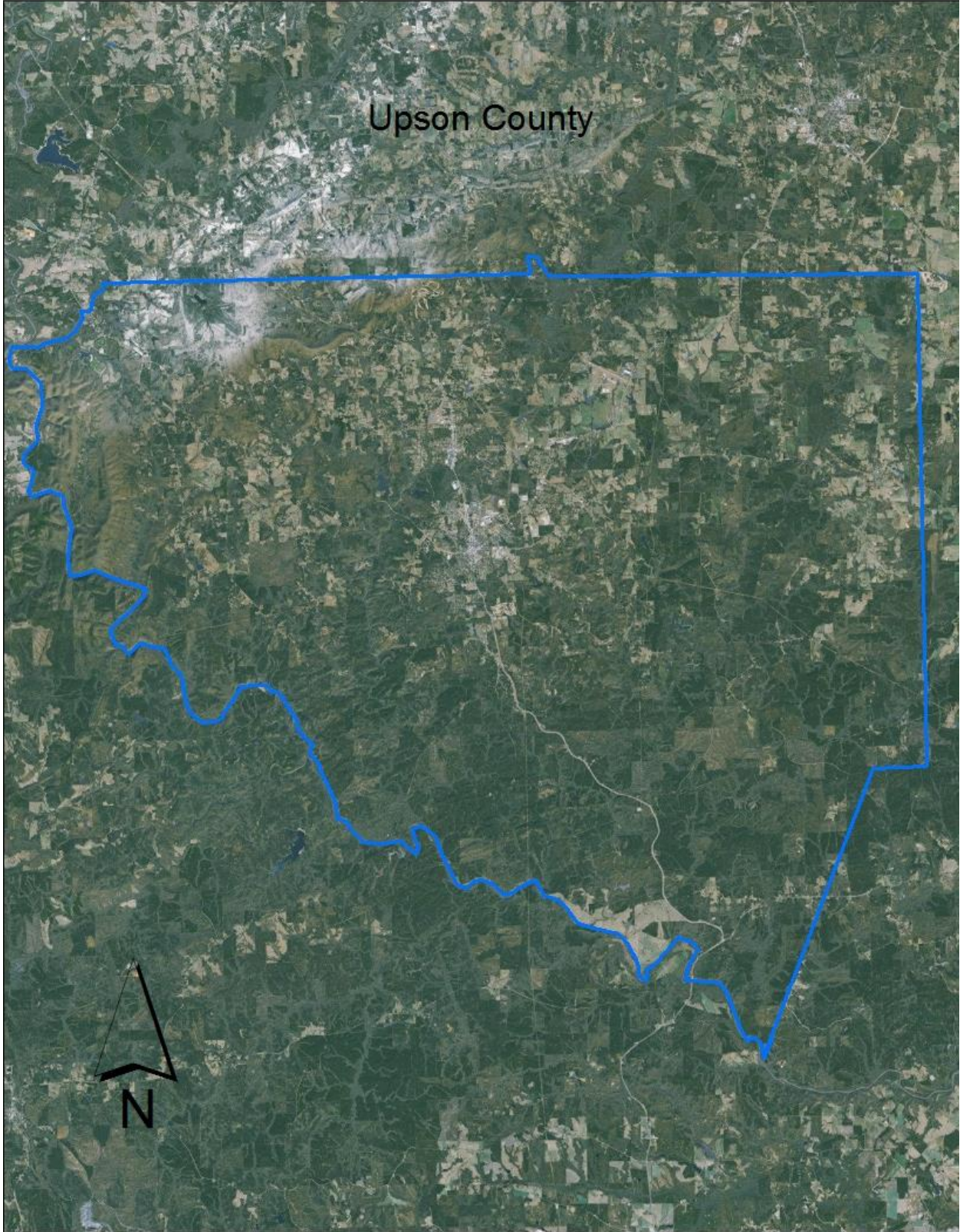


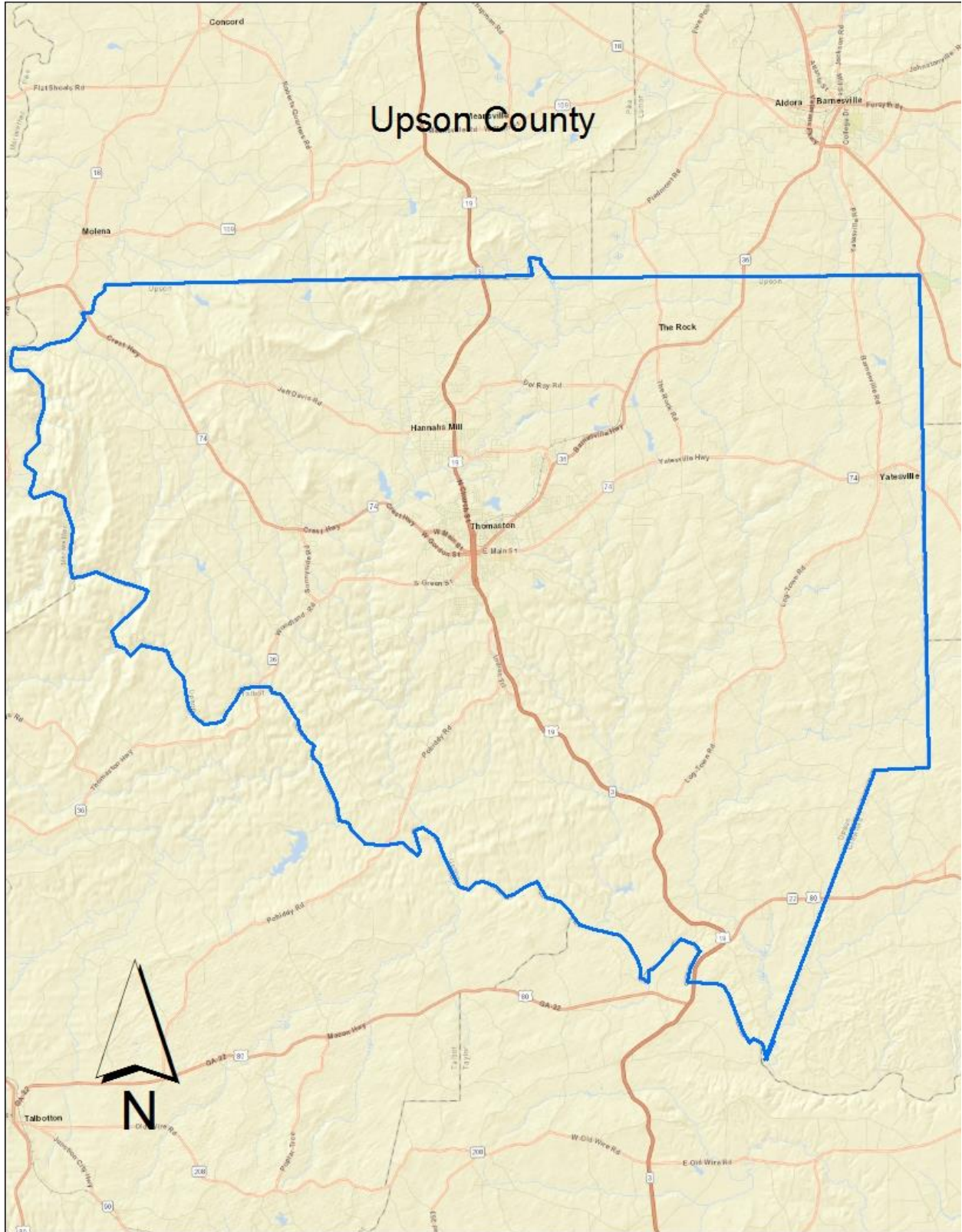
Fire Occurrence Map for Upson County for Fiscal Year 2012-2016



IV. COMMUNITY BASE MAPS







V. COMMUNITY WILDFIRE RISK ASSESSMENT

The Wildland-Urban Interface

There are many definitions of the Wildland-Urban Interface (WUI), however from a fire management perspective it is commonly defined as an area where structures and other human development meet or intermingles with undeveloped wildland or vegetative fuels. As fire is dependent on a certain set of conditions, the National Wildfire Coordinating Group has defined the wildland-urban interface as a set of conditions that exists in or near areas of wildland fuels, regardless of ownership. This set of conditions includes type of vegetation, building construction, accessibility, lot size, topography and other factors such as weather and humidity. When these conditions are present in certain combinations, they make some communities more vulnerable to wildfire damage than others. This “set of conditions” method is perhaps the best way to define wildland-urban interface areas when planning for wildfire prevention, mitigation, and protection activities.

There are three major categories of wildland-urban interface. Depending on the set of conditions present, any of these areas may be at risk from wildfire. A wildfire risk assessment can determine the level of risk.

1. “Boundary” wildland-urban interface is characterized by areas of development where homes, especially new subdivisions, press against public and private wildlands, such as private or commercial forest land or public forests or parks. This is the classic type of wildland-urban interface, with a clearly defined boundary between the suburban fringe and the rural countryside.

2. “Intermix” wildland-urban interface areas are places where improved property and/or structures are scattered and interspersed in wildland areas. These may be isolated rural homes or an area that is just beginning to go through the transition from rural to urban land use.

3. “Island” wildland-urban interface, also called occluded interface, are areas of wildland within predominately urban or suburban areas. As cities or subdivisions grow, islands of undeveloped land may remain, creating remnant forests. Sometimes these remnants exist as parks, or as land that cannot be developed due to site limitations, such as wetlands.

(courtesy *Fire Ecology and Wildfire Mitigation in Florida* 2004)



The Wildland Urban Interface (WUI) layer reflects housing density depicting where humans and their structures meet or intermix with wildland fuels.

Wildland Urban Interface Hazards

Firefighters in the wildland urban interface may encounter hazards other than the fire itself, such as hazardous materials, utility lines and poor access.

● Hazardous Materials

- Common chemicals used around the home may be a direct hazard to firefighters from flammability, explosion potential and/or vapors or off-gassing. Such chemicals include paint, varnish and other flammable liquids; fertilizer; pesticides; cleansers; aerosol cans, fireworks, batteries and ammunition. In addition, some common household products such as plastics may give off very toxic fumes when they burn. Stay OUT of the smoke from burning structures and any unknown sources such as trash piles.

● Illicit Activities

- Marijuana plantations or drug production labs may be found in wildland urban interface areas. Extremely hazardous materials such as propane tanks and flammable/toxic chemicals may be encountered, as well as booby traps.

● Propane tanks

- Both large (household size) and small (gas grill size) liquefied propane gas (LPG) tanks can present hazards to firefighters, including explosion. See the "LPG Tank Hazards" discussion for details.

● Utility lines

- Utility lines may be located above and below ground and may be cut or damaged by tools or equipment. Don't spray water on utility lines or boxes.

● Septic tanks and fields

- Below-ground structures may not be readily apparent and may not support the weight of engines or other apparatus.

● New construction materials

- Many new construction materials have comparatively low melting points and may "off-gas" extremely hazardous vapors. Plastic decking materials that resemble wood are becoming more common and may begin softening and losing structural strength at 180° F, though they normally do not sustain combustion once direct flame is removed. However, if they continue to burn they exhibit the characteristics of flammable liquids.

● Pets and livestock

- Pets and livestock may be left when residents evacuate and will likely be highly stressed, making them more inclined to bite and kick. Firefighters should not put themselves at risk to rescue pets or livestock.

● Evacuation occurring

- Firefighters may be taking structural protection actions while evacuations of residents are occurring. Be very cautious of people driving erratically. Distraught residents may refuse to leave their property, and firefighters may need to disengage from fighting fire to contact law enforcement officers for assistance. In most jurisdictions firefighters do not have the authority to force evacuations. Firefighters should not put themselves at risk trying to protect someone who will not evacuate!

● Limited access

- Narrow one-lane roads with no turn-around room, inadequate or poorly maintained bridges and culverts are frequently found in wildland urban interface areas. Access should be sized-up and an evacuation plan for all emergency personnel should be developed.

The wildland fire risk assessments conducted in 2010 by the Thomaston Fire Department and the Georgia Forestry Commission returned an average score of 131, placing Upson County in the “high risk” hazard range. The risk assessment instrument used to evaluate wildfire hazards to Upson County’s WUI was the Hazard and Wildfire Risk Assessment Checklist. The instrument takes into consideration accessibility, vegetation (based on fuel models), roofing assembly, building construction, and availability of fire protection resources, placement of gas and electric utilities, and additional rating factors. The following factors contributed to the wildfire hazard score for Upson County:

- Dead end roads with inadequate turn arounds
- Narrow roads without drivable shoulders
- Long, narrow, and poorly labeled driveways
- Limited street signs and homes not clearly addressed
- Thick, highly flammable vegetation surrounding many homes
- Minimal defensible space around structures
- Homes with wooden siding and roofs with heavy accumulations of vegetative debris
- No pressurized or non-pressurized water systems available
- Above ground utilities
- Large, adjacent areas of forest or wildlands
- Heavy fuel buildups in adjacent wildlands
- Undeveloped lots comprising half the total lots in many rural communities.
- High occurrence of wildfires in the several locations
- Distance from fire stations
- Lack of homeowner or community organizations

The Communities-at-Risk within Upson County that led to its high risk rating are:

Smokey Hollow Community, Smokey Hollow RD

Goshen Road Community, Hwy 36 West

Saw Mill Village, East Lee Street

Earles Road / Willams Road Intersection

Pobiddy, Hidden Hill and Rockwood Lane

Day Estates Subdivision, Green Oaks Circle – Northridge Drive – Allenwood Road

Shadowood Subdivision, Off Woodland Highway

Hickory Ridge, Near Hickory Ridge Golf Course

Salem Community, Off US Hwy 80 and Allen Road

Hagans Mountain East, Gail Lane Off Day Road

Pallet Mill Village, Pallet Mill – Mt. Lake Road – Reidplace Road

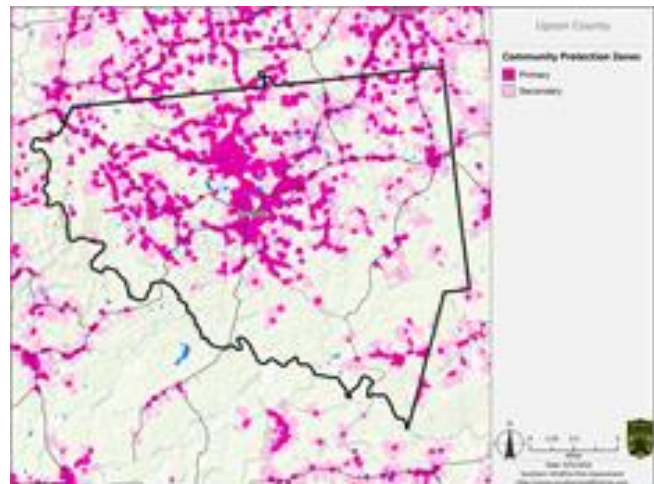
Bull Trail, Off Smyrna Church Road

Stagecoach Community, Off Hwy 19 North near the Pike County Line

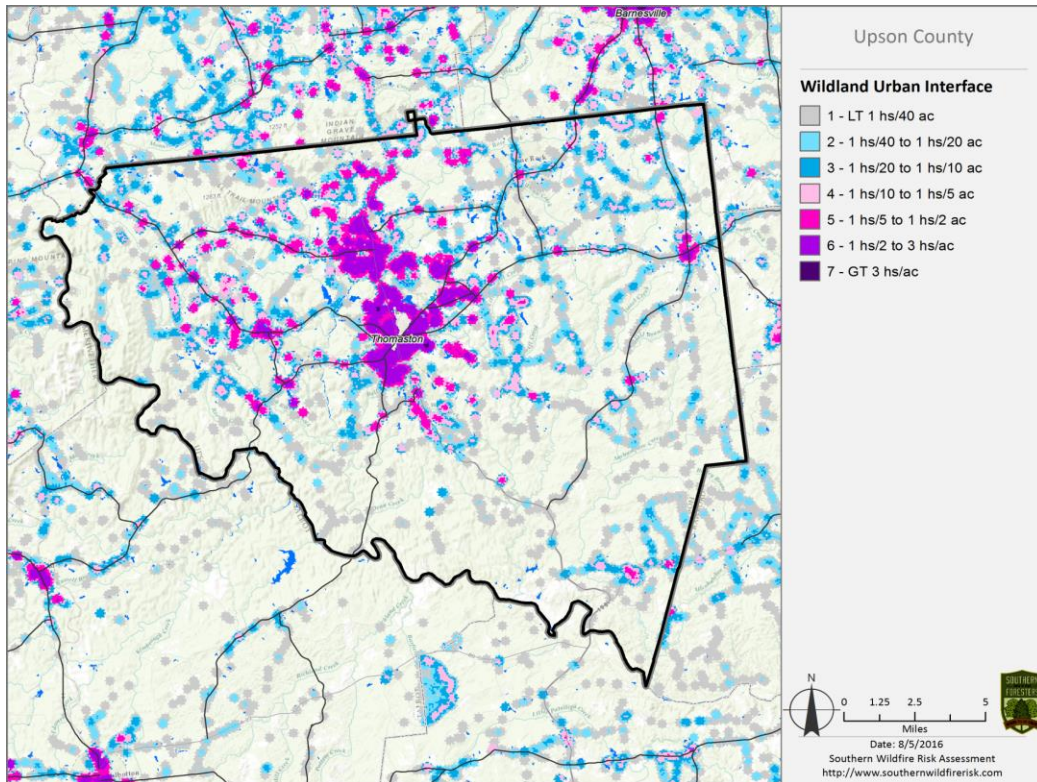
VI. SOUTHERN WILDFIRE RISK ASSESSMENT SUMMARY

The Southern Wildfire Risk Assessment tool, developed by the Southern Group of State Foresters, was released to the public in July 2014. This tool allows users of the Professional Viewer application of the Southern Wildfire Risk Assessment (SWRA) web Portal (SouthWRAP) to define a specific project area and summarize wildfire related information for this area. A detailed risk summary report is generated using a set of predefined map products developed by the Southern Wildfire Risk Assessment project which have been summarized explicitly for the user defined project area. A risk assessment summary was generated for Upson County. The SouthWRAP (SWRA) products included in this report are designed to provide the information needed to support the following key priorities:

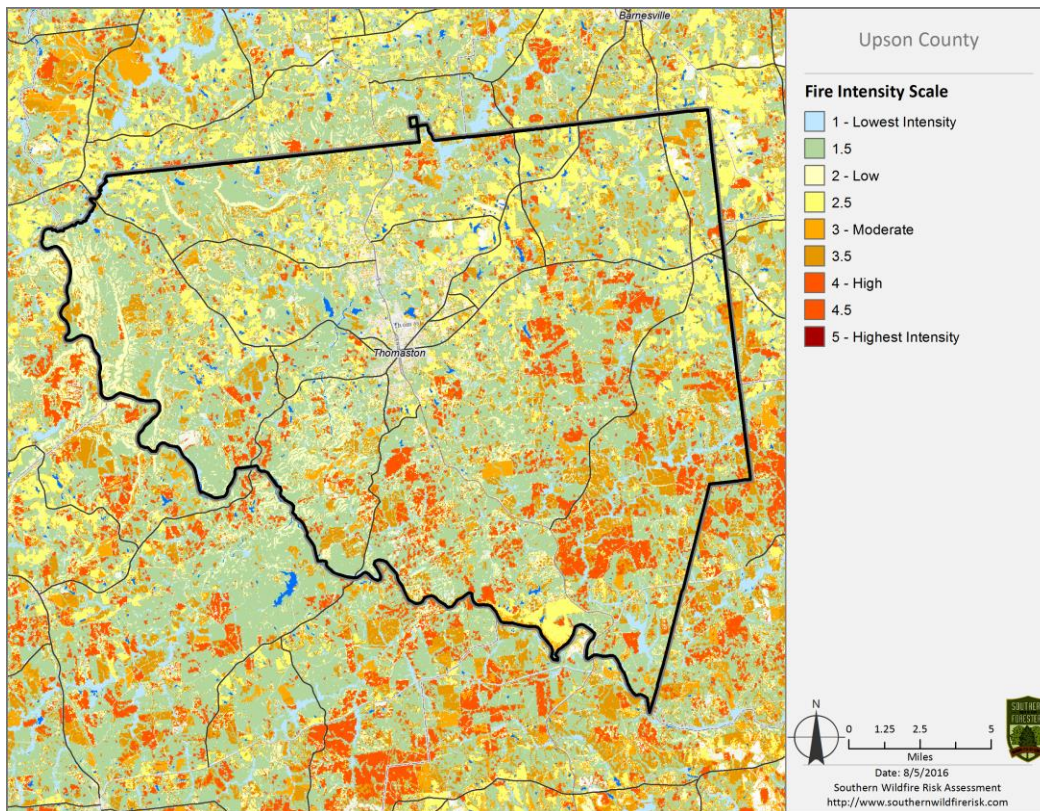
- Identify areas that are most prone to wildfire
- Identify areas that may require additional tactical planning, specifically related to mitigation projects and Community Wildfire Protection Planning
- Provide the information necessary to justify resource, budget and funding requests
- Allow agencies to work together to better define priorities and improve emergency response, particularly across jurisdictional boundaries
- Define wildland communities and identify the risk to those communities
- Increase communication and outreach with local residents and the public to create awareness and address community priorities and needs
- Plan for response and suppression resource needs
- Plan and prioritize hazardous fuels treatment programs

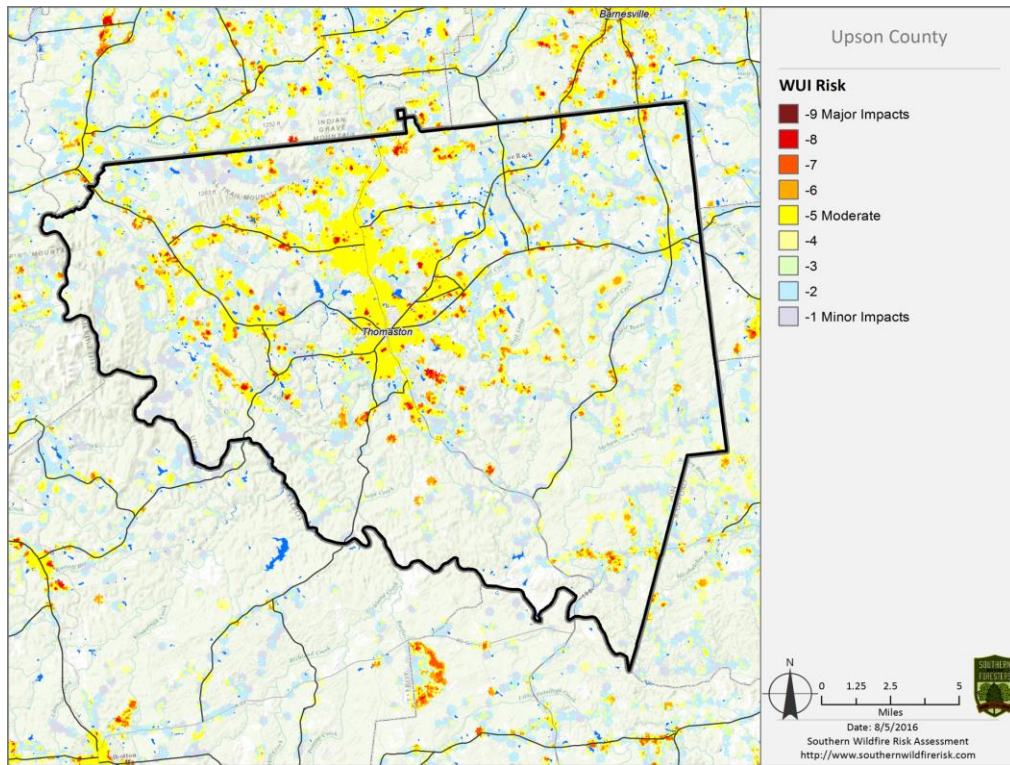


Community Protection Zone map from the Upson County SWRA report

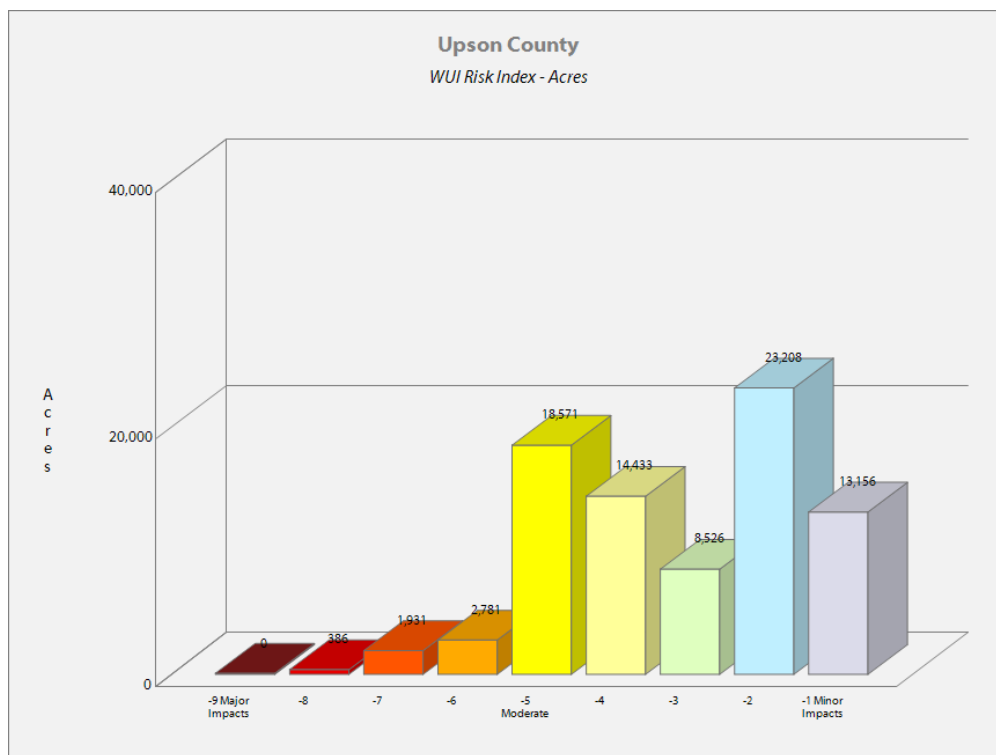


Wildland Urban Interface map (above) and Fire Intensity map (below) from the Upson County SWRA report





Wildland Urban Interface Risk map (above) from the Upson SWRA report and WUI Risk acres (below)



VII. PRIORITIZED MITIGATION RECOMMENDATIONS

Executive Summary

As Central Georgia continues to see increased growth from other areas seeking less crowded and warmer climates, new development will occur more frequently on forest and wildland areas. The County will have an opportunity to significantly influence the wildland fire safety of new developments. It is important that new development be planned and constructed to provide for public safety in the event of a wildland fire emergency.

Over the past 20 years, much has been learned about how and why homes burn during wildland fire emergencies. Perhaps most importantly, case histories and research have shown that even in the most severe circumstances, wildland fire disasters can be avoided. Homes can be designed, built and maintained to withstand a wildfire even in the absence of fire services on the scene. The national Firewise Communities program is a national awareness initiative to help people understand that they don't have to be victims in a wildfire emergency. The National Fire Protection Association has produced two standards for reference: NFPA 1144 Standard for Reducing Structure Ignition Hazards from Wildland Fire. 2008 Edition and NFPA 1141 Standard for Fire Protection Infrastructure for Land Development in Suburban and Rural Areas.

In 2014 Georgia approved and adopted the International Wildland-Urban Interface Code for use by Georgia Counties. This is a modern, up to date code addressing the mitigation of fire in the wildland-urban interface. The code establishes minimum regulations for land use and the built environment in interface areas. The 2012 IWUIC Code is available from the International Code Council.

When new developments are built in the Wildland/Urban Interface, a number of public safety challenges may be created for the local fire services: (1) the water supply in the immediate areas may be inadequate for fire suppression; (2) if the Development is in an outlying area, there may be a longer response time for emergency services; (3) in a wildfire emergency, the access road(s) may need to simultaneously support evacuation of residents and the arrival of emergency vehicles; and (4) when wildland fire disasters strike, many structures may be involved simultaneously, quickly exceeding the capability of even the best equipped fire departments.

The following recommendations were developed by the Upson County CWPP Core team as a result of surveying and assessing fuels and structures and by conducting meetings and interviews with county and city officials. A priority order was determined based on which mitigation projects would best reduce the hazard of wildfire in the assessment area.

Proposed Community Hazard and Structural Ignitability Reduction Priorities

Primary Protection for Community and Its Essential Infrastructure		
Treatment Area	Treatment Types	Treatment Method(s)
1. All Structures	Create minimum of 30-foot of defensible space**	Trim shrubs and vines to 30 feet from structures, trim overhanging limbs, replace flammable plants near homes with less flammable varieties, remove vegetation around chimneys.
2. Applicable Structures	Reduce structural ignitability**	Clean flammable vegetative material from roofs and gutters, store firewood appropriately, install skirting around raised structures, store water hoses for ready access, and replace pine straw and mulch around plantings with less flammable landscaping materials.
3. Community Clean-up Day	Cutting, mowing, pruning**	Cut, prune, and mow vegetation in shared community spaces.
4. Driveway Access	Culvert installation	See that adequate lengths of culverts are installed to allow emergency vehicle access.
5. Road Access	Identify needed road improvements	As roads are upgraded, widen to minimum standards with at least 50 foot diameter cul de sacs or turn arounds.

Proposed Community Wildland Fuel Reduction Priorities

Treatment Area	Treatment Types	Treatment Method(s)
1. Adjacent WUI Lands	Reduce hazardous fuels	Encourage prescribed burning for private landowners and industrial timberlands particularly adjacent to residential areas. County resolution to state recommending that the Ga Forestry Commission not charge for prescribed burning in WUI areas. Seek grant for WUI mitigation team.

2. Railroad Corridors	Reduce hazardous fuels	Encourage railroads to better maintain their ROW eliminating brush and grass through herbicide and mowing. Maintain firebreaks along ROW adjacent to residential areas.
3. Existing Fire Lines	Reduce hazardous fuels	Clean and re-harrow existing lines
Proposed Improved Community Wildland Fire Response Priorities		
1. Water Sources	Dry Hydrants	Inspect, maintain and improve access to existing dry hydrants. Add signage along road to mark the hydrants. Locate additional dry hydrants as needed.
2. Fire Stations	Equipment	Wildland hand tools. Lightweight Wildland PPE Gear. Investigate need for “brush” trucks near communities at risk.
3. Water Sources	Drafting equipment	Investigate need for additional drafting pumps.
4. Personnel	Training	Obtain Wildland Fire Suppression training for fire personnel to include S130, S190, and S215.
**Actions to be taken by homeowners and community stakeholders		

Proposed Education and Outreach Priorities

1. Conduct “How to Have a Firewise Home” Workshop for County Residents
<p>Set up and conduct a workshop for homeowners that teach the principles of making homes and properties safe from wildfire. Topics for discussion include defensible space, landscaping, building construction, etc. Workshop will be scheduled for evenings or weekends when most homeowners are available and advertised through local media outlets.</p> <p>Distribute materials promoting firewise practices and planning through local community and governmental meetings.</p>
2. Conduct “Firewise” Workshop for Community Leaders
<p>Arrange for GFC Firewise Coordinator to work with local community leaders and governmental officials on the importance of “Firewise Planning” in developing ordinances and codes as the county as the need arises. Identified “communities-at-risk” including: Smokey Hollow and Fair Oaks, should be sought after for inclusion in the National Firewise Communities Program.</p>

<p>3. Spring Clean-up Event</p>
<p>Conduct clean-up event every spring involving the Georgia Forestry Commission, Upson County Fire Departments, City of Thomaston Fire Department and local residence of Upson County. Set up information table with educational materials and refreshments. Initiate the event with a morning briefing by GFC Firewise coordinator and local fire officials detailing plans for the day and safety precautions. Activities to include the following:</p> <ul style="list-style-type: none"> • Clean flammable vegetative material from roofs and gutters • Trim shrubs and vines to 30 feet away from structures • Trim overhanging limbs • Clean hazardous or flammable debris from adjacent properties <p>Celebrate the work with a community cookout, with Community officials, GFC and Upson County Fire Departments discussing and commending the work accomplished. NFPA sponsors National Wildfire Preparedness Day on the 1st Saturday of May each year, which is an excellent time to have this program.</p>
<p>4. Informational Packets</p>
<p>Develop and distribute informational packets to be distributed by realtors and insurance agents. Included in the packets are the following:</p> <ul style="list-style-type: none"> • Be Firewise Around Your Home • Firewise Guide to Landscape and Construction • Firewise Communities USA Bookmarks, litter bags, and brochures.
<p>5. Wildfire Protection Display</p>
<p>Create and exhibit a display for the general public at the local events. Display can be independent or combined with the Georgia Forestry Commission display.</p>
<p>6. Press</p>
<p>Invite the local and regional news media to community “Firewise” functions for news coverage and regularly submit press releases documenting wildfire risk improvements in Upson County.</p>



Prescribed burning of woodlands is the best management practice to reduce hazardous fuel accumulation. The Georgia Forestry Commission can provide a prescribed burning plan, establish fire breaks, and can also provide equipment standby and assist with burning when personnel are available.

VIII. ACTION PLAN

Roles and Responsibilities

The following roles and responsibilities have been developed to implement the action plan:

Role	Responsibility
Hazardous Fuels and Structural Ignitability Reduction	
Upson County WUI Fire Council	Create this informal team or council comprised of residents, GFC officials, Upson County Fire department officials, a representative from the city and county government and the EMA Director for Upson County. Meet periodically to review progress towards mitigation goals, appoint and delegate special activities, work with federal, state, and local officials to assess progress and develop future goals and action plans. Work with residents to implement projects and firewise activities.
Key Messages to focus on	<ol style="list-style-type: none"> 1 Defensible Space and Firewise Landscaping 2 Debris Burning Safety 3 Firewise information for homeowners 4 Prescribed burning benefits 5 Fuel mitigation
Communications objectives	<ol style="list-style-type: none"> 1 Create public awareness for fire danger and defensible space issues 2 Identify most significant human cause fire issues 3 Enlist public support to help prevent these causes 4 Encourage people to employ fire prevention and defensible spaces in their communities.
Target Audiences	<ol style="list-style-type: none"> 1 Homeowners 2 Forest Landowners and users 3 Civic Groups 4 School Groups
Methods	<ol style="list-style-type: none"> 1 News Releases 2 Personal Contacts 3 Key messages and prevention tips 4 Visuals such as signs, brochures and posters

Spring Clean-up Day	
Event Coordinator	Coordinate day's events and schedule, catering for cookout, guest attendance, and moderate activities the day of the day of the event.
Event Treasurer	Collect funds from residents to cover food, equipment rentals, and supplies.
Publicity Coordinator	Advertise event through neighborhood newsletter, letters to officials, and public service announcements (PSAs) for local media outlets. Publicize post-event through local paper and radio PSAs.
Work Supervisor	Develop volunteer labor force of community residents; develop labor/advisory force from Georgia Forestry Commission, Upson County Fire Departments, and Emergency Management Agency. Procure needed equipment and supplies. In cooperation with local city and county officials, develop safety protocol. Supervise work and monitor activities for safety the day of the event.

Funding Needs

The following funding is needed to implement the action plan:

Project	Estimated Cost	Potential Funding Source(s)
1. Create a minimum of 30 feet of defensible space around structures	Varies	Residents will supply labor and fund required work on their own properties.
2. Reduce structural ignitability by cleaning flammable vegetation from roofs and gutters; appropriately storing firewood, installing skirting around raised structures, storing water hoses for ready access, replacing pine needles and mulch around plantings with less flammable material.	Varies	Residents will supply labor and fund required work on their own properties.
3. Amend codes and ordinances to provide better driveway access, increased visibility of house numbers, properly stored firewood, minimum defensible space brush clearance, required Class A roofing materials and skirting around raised structures, planned maintenance of community lots.	No Cost	To be adopted by city and county government. Utilize the 2012 IWUIC Code.
4. Spring Cleanup Day/ NFPA WF Prep Day		Business Donations. State Farm grants.
5. Fuel Reduction Activities	\$15 / acre	FEMA & USFS Grants

VIII.) GRANT FUNDING AND MITIGATION ASSISTANCE

Community Protection Grant: US Forest Service sponsored prescribed fire program. Communities with “at-risk” properties that lie within ten miles of a National Forest, National Park Service or Bureau of Land Management tracts may apply with the Georgia Forestry Commission to have their land prescribe burned free-of-charge. Forest mastication, where it is practical with Georgia Forestry Commission equipment, is also available under this grant program.

FEMA Mitigation Policy MRR-2-08-01: through GEMA – Hazard Mitigation Grant Program (HMGP) and Pre-Disaster Mitigation Program (PDM).

1. To provide technical and financial assistance to local governments to assist in the implementation of long term, cost effective hazard mitigation accomplishments.
2. This policy addresses wildfire mitigation for the purpose of reducing the threat to all-risk structures through creating defensible space, structural protection through the application of ignition resistant construction and limited hazardous fuel reduction to protect life and property.
3. With a completed registered plan (addendum to the State Plan) counties can apply for pre-mitigation funding. They will also be eligible for HMGP funding if the county is declared under a wildfire disaster.

Georgia Forestry Commission: Plowing and prescribed burning assistance, as well as forest mastication, can be obtained from the GFC as a low-cost option for mitigation efforts.

The Georgia Forestry Commission Firewise Community Mitigation Assistance Grants – Nationally recognized Firewise Communities can receive up to \$5000 grants to help address potential wildfire risk reduction projects. Grant submission can be made through local Georgia Forestry Commission offices or your Regional Wildfire Prevention Specialist.

The International Association of Fire Chiefs (IAFC) and American International Group, Inc. (AIG) offer grants to assist local fire departments in establishing or enhancing their community fuels mitigation programs while educating members of the community about community wildfire readiness and encouraging personal action.

IX.) GLOSSARY

Community-At-Risk – A group of two or more structures whose proximity to forested or wildland areas places homes and residents at some degree of risk.

Critical Facilities – Buildings, structures or other parts of the community infrastructure that require special protection from an approaching wildfire.

CWPP – The Community Wildfire Protection Plan.

Defensible Space – The immediate landscaped area around a structure (usually a minimum of 30 ft.) kept “lean, clean and green” to prevent an approaching wildfire from igniting the structure.

Dry Hydrant - A non-pressurized pipe system permanently installed in existing lakes, ponds and streams that provides a suction supply of water to a fire department tank truck.

FEMA – The Federal Emergency Management Agency whose mission is to support our citizens and first responders to ensure that as a nation we work together to build, sustain, and improve our capability to prepare for, protect against, respond to, recover from, and mitigate all hazards.

Fire Adapted Community – A community fully prepared for its wildfire risk by taking actions to address safety, homes, neighborhoods, businesses and infrastructure, forest, parks, open spaces, and other community assets.

Firewise Program – A national initiative with a purpose to reduce structural losses from wildland fires.

Firewise Community/USA – A National recognition program for communities that take action to protect themselves from wildland fire. To qualify a community must have a wildfire risk assessment, mitigation action plan, have an annual firewise education event, have firewise leadership, and complete a certification application.

Fuels – All combustible materials within the wildland/urban interface or intermix including, but not limited to, vegetation and structures.

Fuel Modification – Any manipulation or removal of fuels to reduce the likelihood of ignition or the resistance to fire control.

Healthy Forests Initiative - [Launched in August 2002 by President Bush](#) (following passage of the Healthy Forests Restoration Act by Congress) with the intent to reduce the risks severe wildfires pose to people, communities, and the environment.

Hazard & Wildfire Risk Assessment – An evaluation to determine an area’s (community’s) potential to be impacted by an approaching wildland fire

Home Ignition Zone (Structure Ignition Zone) - Treatment area for wildfire protection. The “zone” includes the structure(s) and their immediate surroundings from 0-200 ft.

Mitigation – An action that moderates the severity of a fire hazard or risk.

International Wildland Urban Interface Code (IWUIC) – Adopted in Georgia in 2014 and is a model code intended to be adopted and used supplemental to the adopted building and fire codes of a jurisdiction. Its objective is the minimum special regulations for the safeguarding of life and property from the intrusion of wildfire.

National Fire Plan – National initiative, passed by Congress in the year 2000, following a landmark wildland fire season, with the intent of actively responding to severe wildland fires and their impacts to communities while ensuring sufficient firefighting capacity for the future.

National Fire Protection Association (NFPA) - An international nonprofit organization established in 1896, whose mission is to reduce the worldwide burden of fire and other hazards on the quality of life by providing and advocating consensus codes and standards, research, training, and education.

National Wildfire Preparedness Day – Started in 2014 by the National Fire Protection Association as a day for communities to work together to prepare for the fire season. It is held annually on the first Saturday in May.

Prescribed Burning (prescribed fire) –The use of planned fire that is deliberately set under specific fuel and weather condition to accomplish a variety of management objectives and is under control until it burns out or is extinguished.

Ready, Set, Go - A program fire services use to help homeowners understand wildfire preparedness, awareness, and planning procedures for evacuation.

Southern Group of State Foresters – Organization of agency heads of the forestry agencies of the 13 southern states, Puerto Rico and the Virgin Islands.

Stakeholders– Individuals, groups, organizations, businesses or others who have an interest in wildland fire protection and may wish to review and/or contribute to the CWPP content.

Wildfire or Wildland Fire – An unplanned and uncontrolled fire spreading through vegetative fuels.

Wildland/Urban Interface - The presence of structures in locations in which the authority having jurisdiction (AHJ) determines that topographical features, vegetation, fuel types, local weather conditions and prevailing winds result in the potential for ignition of the structures within the area from flames and firebrands from a wildland fire.

X.) SOURCES OF INFORMATION

Publications/Brochures/Websites:

- FIREWISE materials can be ordered for no cost at www.firewise.org
- Georgia Forestry Commission www.georgiafirewise.org
- Examples of successful wildfire mitigation programs can be viewed at the website for National Database of State and Local wildfire Hazard Mitigation Programs sponsored by the U.S. Forest Service and the Southern Group of State Foresters www.wildfireprograms.com
- Information about a variety of interface issues (including wildfire) can be found at the USFS website for Interface South: www.interfacesouth.org
- Information on codes and standards for emergency services including wildfire can be found at www.nfpa.org
- Information on FEMA Assistance to Firefighters Grants (AFG) can be found at www.firegrantsupport.com
- Information on National Fire Plan grants can be found at <http://www.federalgrantswire.com/national-fire-plan--rural-fire-assistance.html>
- Southern Wildfire Risk Assessment website SouthWRAP www.SouthernWildfireRisk.com
- Fire Adapted Communities www.fireadapted.org
- Ready, Set, Go www.wildlandfirersg.org
- National Wildfire Preparedness Day www.wildfireprepreday.org

Appended Documents:

Upson County Southern Risk Assessment Summary Report (SouthWRAP)

All files that make up this plan are available in an electronic format from the Georgia Forestry Commission.



**P. O. Box 819Macon, GA 312021-800-GA-
TREESGaTrees.org**

The Georgia Forestry Commission provides leadership, service, and education in the protection and conservation of Georgia's forest resources. An Equal Opportunity Employer and Service Provider