



# Community Wildfire Protection Plan

*An Action Plan for Wildfire Mitigation and Conservation of Natural Resources*

## Madison County

---

A Program of the Georgia Forestry Commission  
with support from the U.S. Forest Service



Prepared by:

Gary Roberts, Chief Ranger Sr. Elbert – Franklin – Hart – Madison

Wesley Moss, Ranger II Elbert – Franklin – Hart - Madison

Carl Melear, CWPP Specialist Forest Protection

The following report is a collaborative effort between various entities. The representatives listed below comprise the core decision-making team responsible for this report and mutually agree on the plan's contents.

**County Representatives:**

Anthony Dove, Commission Chairman

Signature \_\_\_\_\_

Stanley Thomas, Commissioner District 1

Signature \_\_\_\_\_

John Pethel Sr., Commissioner District 2

Signature \_\_\_\_\_

Mike Youngblood, Commissioner District 3

Signature \_\_\_\_\_

Dewitt Bond, Commissioner District 4

Signature \_\_\_\_\_

Jim Escoe, Commissioner District 5

Signature \_\_\_\_\_

**Local Emergency Services Representatives:**

Marc Perry President Madison County Fire Protection Association

Signature \_\_\_\_\_

Johnny Bridges Madison County EMA Director

Signature \_\_\_\_\_

**Local Georgia Forestry Commission Representatives:**

Gary Roberts Chief Ranger Sr.

Georgia Forestry Commission

Signature \_\_\_\_\_

Carl W. Melear Community Wildfire Protection Plan Specialist

Georgia Forestry Commission

Signature \_\_\_\_\_

## PLAN CONTENTS

1. Objectives and Goals
2. County Background, Existing Fire Situation, and Interface information
3. Risk Summary
4. Prioritized Mitigation Recommendations
5. Action Plan, Timetables, and Assessment Strategy
6. Wildfire Pre-Suppression Plan
7. County Base and Hazards Maps
8. Appendix

### 1) OBJECTIVES AND GOALS

The mission of the following report is to set clear priorities for the implementation of wildfire mitigation in Madison County. The plan includes prioritized recommendations for the appropriate types and methods of fuel reduction and structure ignitability reduction that will protect this county and its essential infrastructure. Prioritized activities to educate the public are included. It also includes a plan for wildfire suppression. Specifically, the plan includes community-centered actions that will:

- Educate citizens on wildfire, its risks, and ways to protect lives and properties,
- Support fire, rescue, and suppression entities,
- Focus on collaborative decision-making and citizen participation,
- Develop and implement effective mitigation strategies, and
- Develop and implement effective community ordinances and codes.

This plan should become a working document that is shared by local, state, and federal agencies that will use it to accomplish common goals. An agreed-upon schedule for meeting to review accomplishments, solve problems, and plan for the future should extend beyond the scope of this plan. Without this follow up this plan will have limited value

## 2) COUNTY BACKGROUND AND EXISTING FIRE SITUATION

### Madison County



Madison County, in northeast Georgia, was created on December 5, 1811, by an act of the [state legislature](#). Originally inhabited by [Creek](#) and [Cherokee Indians](#), the land was gradually ceded during the colonial period to Governor [James Wright](#) of Georgia and was organized into two counties—[Wilkes](#) and [Franklin](#). Eventually that land was divided into smaller counties, and Madison County was created from portions of [Clarke](#), [Elbert](#), Franklin, [Jackson](#), and [Oglethorpe](#) counties. Georgia's thirty-eighth county was named for James Madison, who was president of the United States at the time of its creation.

According to the 2000 U.S. census, the population of Madison County was 25,730 (89 percent white, 8.5 percent black, and 2 percent Hispanic). Incorporated towns in the county are Carlton, Colbert, Comer, Danielsville, Hull, and Ila.

Danielsville, the county seat, was named for General Allen Daniel, a [Revolutionary War](#) (1775-83) hero, who donated land for public buildings soon after the county was established. Settlers in the area were primarily Revolutionary War veterans who had acquired land through land grants. Madison has been primarily an agricultural county for most of its history. In the nineteenth century farmers grew [corn](#), beans, pumpkins, and later [cotton](#) and oats. The latter half of the nineteenth century saw the introduction of beef and [dairy farming](#) as well. By the 1930s overcultivation of cotton had damaged the [soil](#) in much of the county, making it useless for crop farming. Since 2003 agribusiness, particularly [poultry](#) production, has dominated the local economy.



[Madison County Government Complex](#)



[Danielsville Hardware](#)

Madison County's most famous native is [Crawford Long](#). Born in Danielsville in 1815, Long was the first physician to use sulfuric ether as anesthesia during surgery. As a young doctor in Jefferson (in neighboring Jackson County) he used the gas in 1842 when he removed a tumor from the neck of James Venable for two dollars.

Besides being the birthplace of Long, Madison County is home to several other historic landmarks. New Hope Presbyterian Church, established in 1788, is Georgia's third oldest church.



[Watson Mill Bridge State Park](#)

The county is also the site of the longest covered bridge in the state. The bridge, which is on the National Register of Historic Places, is located in [Watson Mill Bridge State Park](#), which is shared by Madison and Oglethorpe counties. It was constructed in 1885 by Washington King, the son of a former [slave](#), at a cost of \$3,000. Though the bridge was renovated in the early 1970s, the original truss system still supports it. The bridge spans 228.6 feet over the South Fork of the Broad River and is named for Gabriel Watson, who once operated a gristmill several hundred feet

## WILDFIRE PROTECTION PLAN: AN ACTION PLAN FOR WILDFIRE MITIGATION

---

downriver from the bridge.

The most recognizable site in Madison County is the old courthouse. Completed in 1901 for \$18,314, the brick structure stands in the center of the Danielsville town square. Also listed on the National Register of Historic Places, it is one of Georgia's most ornate courthouses. It was used continuously as a courthouse and county offices from 1901 until 1996, when officials moved to a more spacious county complex.



[Madison County Courthouse](#)

Madison County is also home to [Jubilee Partners](#), a Christian service community located near Comer.

**The above information is courtesy of the New Georgia Encyclopedia**

**WILDFIRE PROTECTION PLAN: AN ACTION PLAN FOR WILDFIRE MITIGATION**

---

**Current Fire Situation:**

Wildland fire has not been a serious problem in Madison County when compared to the rest of the state. This is due to rapid response by county and state response agencies and excellent interagency cooperation. Thus far(as of April 8, 2011) in FY 2011 which began on July 1, 2010, there have been 17 fires that burned 14.39 acres for an average size of .85 acres. During this same period the statewide county average was 9.78 acres. Causes and fire information by class is outlined in the table below.

<b>County = Madison</b>	<b>Cause</b>	<b>Fires</b>		<b>Acres</b>	<b>Fires 5 Yr Avg</b>	<b>Acres 5 Yr Avg</b>
<a href="#">Campfire</a>	Campfire	1	↑	0.22	0.40	0.27
<a href="#">Children</a>	Children	0		0.00	0.80	0.40
<a href="#">Debris: Ag Fields, Pastures, Orchards, Etc</a>	Debris: Ag Fields, Pastures, Orchards, Etc	0		0.00	0.60	0.50
<a href="#">Debris: Construction Land Clearing</a>	Debris: Construction Land Clearing	1	↑	0.18	0.60	0.08
<a href="#">Debris: Escaped Prescribed Burn</a>	Debris: Escaped Prescribed Burn	0		0.00	0.40	0.18
<a href="#">Debris: Household Garbage</a>	Debris: Household Garbage	1		0.38	1.40	1.37
<a href="#">Debris: Residential, Leafpiles, Yard, Etc</a>	Debris: Residential, Leafpiles, Yard, Etc	7	↑	5.97	4.20	5.03
<a href="#">Debris: Site Prep - Forestry Related</a>	Debris: Site Prep - Forestry Related	0		0.00	1.00	6.28
<a href="#">Incendiary</a>	Incendiary	1		4.00	7.40	8.93
<a href="#">Lightning</a>	Lightning	0		0.00	0.40	0.12
<a href="#">Machine Use</a>	Machine Use	4		2.96	4.20	7.22
<a href="#">Miscellaneous</a>	Miscellaneous	0		0.00	1.80	5.12
<a href="#">Railroad</a>	Railroad	0		0.00	0.40	0.03
<a href="#">Smoking</a>	Smoking	2	↑	0.68	0.40	0.14
<b>Totals for County: Madison Year: 2011</b>		17		14.39	24.00	35.66

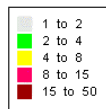
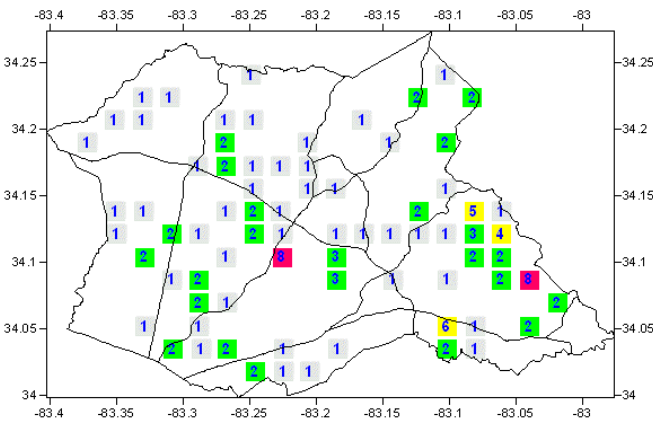
**WILDFIRE PROTECTION PLAN: AN ACTION PLAN FOR WILDFIRE MITIGATION**

The following outlines fire activity in Madison County for the past 5 complete fiscal years. It should be remembered that the statewide average in FY 2007 was influenced by the Sweat Farm, Big Turnaround, and Bugaboo Fires that burned in the Okefenokee. These large fires caused the statewide average to be greatly increased. Overall, FY 2007 was a year of greatly increased fire activity due to prolonged drought.

Fiscal Year	Number of Fires	Acres	Average size	Statewide average size
2010	13	10.79	.83	3.56
2009	23	53.64	2.33	3.90
2008	38	72.29	1.90	4.56
2007	29	27.19	.94	18.64
2006	49	80.68	1.65	3.93

The following map is a representation of fire occurrence numbers for the period FY 2006 through FY 2010. There is also a map of historical fire occurrence areas for Georgia Forestry Commission responses for the period Calendar year 1997 through 2002 in the appendix.

**Fire Occurrence Map for  
Madison County for Fiscal Year 2006-2010**



In general, causes of wildland fire in Madison County cover most all categories. Machine use, escaped debris burns, and incendiary fires are the most prevalent. In FY 2009, incendiary causes accounted for half of all fires that were documented (12 of 23). This cause accounted for approximately one third of all fires over the past 5 years and is the leading cause.

## **The Wildland-Urban Interface**

There are many definitions of the Wildland-Urban Interface (WUI), however from a fire management perspective it is commonly defined as an area where structures and other human development meet or intermingles with undeveloped wildland or vegetative fuels. As fire is dependent on a certain set of conditions, the National Wildfire Coordinating Group has defined the wildland-urban interface as a set of conditions that exists in or near areas of wildland fuels, regardless of ownership. This set of conditions includes type of vegetation, building construction, accessibility, lot size, topography and other factors such as weather and humidity. When these conditions are present in certain combinations, they make some communities more vulnerable to wildfire damage than others. This “set of conditions” method is perhaps the best way to define wildland-urban interface areas when planning for wildfire prevention, mitigation, and protection activities.

There are three major categories of wildland-urban interface. Depending on the set of conditions present, any of these areas may be at risk from wildfire. A wildfire risk assessment can determine the level of risk.

- 1. “Boundary” wildland-urban interface** is characterized by areas of development where homes, especially new subdivisions, press against public and private wildlands, such as private or commercial forest land or public forests or parks. This is the classic type of wildland-urban interface, with a clearly defined boundary between the suburban fringe and the rural countryside.
- 2. “Intermix” wildland-urban interface** areas are places where improved property and/or structures are scattered and interspersed in wildland areas. These may be isolated rural homes or an area that is just beginning to go through the transition from rural to urban land use.
- 3. “Island” wildland-urban interface**, also called occluded interface, are areas of wildland within predominately urban or suburban areas. As cities or subdivisions grow, islands of undeveloped land may remain, creating remnant forests. Sometimes these remnants exist as parks, or as land that cannot be developed due to site limitations, such as wetlands.  
(courtesy *Fire Ecology and Wildfire Mitigation in Florida* 2004)

Madison County is typical of a county that is undergoing a rapid transition from an isolated rural county to an area feeling the influence of an expanding urban area (Athens –Clarke County. It contains mixtures of both boundary and intermix interface.



### **Wildland Urban Interface Hazards**

Firefighters in the wildland urban interface may encounter hazards other than the fire itself, such as hazardous materials, utility lines and poor access.

- **Hazardous Materials**  
Common chemicals used around the home may be a direct hazard to firefighters from flammability, explosion potential and/or vapors or off-gassing. Such chemicals include paint, varnish and other flammable liquids; fertilizer; pesticides; cleansers; aerosol cans, fireworks, batteries and ammunition. In addition, some common household products such as plastics may give off very toxic fumes when they burn. Stay OUT of the smoke from burning structures and any unknown sources such as trash piles.
- **Illicit Activities**  
Marijuana plantations or drug production labs may be found in wildland urban interface areas. Extremely hazardous materials such as propane tanks and flammable/toxic chemicals may be encountered, as well as booby traps.
- **Propane tanks**  
Both large (household size) and small (gas grill size) liquefied propane gas (LPG) tanks can present hazards to firefighters, including explosion. See the "LPG Tank Hazards" discussion for details.
- **Utility lines**  
Utility lines may be located above and below ground and may be cut or damaged by tools or equipment. Don't spray water on utility lines or boxes.
- **Septic tanks and fields**  
Below-ground structures may not be readily apparent and may not support the weight of engines or other apparatus.

- **New construction materials**

Many new construction materials have comparatively low melting points and may "off-gas" extremely hazardous vapors. Plastic decking materials that resemble wood are becoming more common and may begin softening and losing structural strength at 180° F, though they normally do not sustain combustion once direct flame is removed. However, if they continue to burn they exhibit the characteristics of flammable liquids.
- **Pets and livestock**

Pets and livestock may be left when residents evacuate and will likely be highly stressed, making them more inclined to bite and kick. Firefighters should not put themselves at risk to rescue pets or livestock.
- **Evacuation occurring**

Firefighters may be taking structural protection actions while evacuations of residents are occurring. Be very cautious of people driving erratically. Distraught residents may refuse to leave their property, and firefighters may need to disengage from fighting fire to contact law enforcement officers for assistance. In most jurisdictions firefighters do not have the authority to force evacuations. Firefighters should not put themselves at risk trying to protect someone who will not evacuate!
- **Limited access**

Narrow one-lane roads with no turn-around room, inadequate or poorly maintained bridges and culverts are frequently found in wildland urban interface areas. Access should be sized-up and an evacuation plan for all emergency personnel should be developed.

### 3) Risk Summary

Following a meeting of County officials and representatives of the Georgia Forestry Commission on May 20, 2009, assessments were made of communities at risk within the county. Areas designated for assessment were selected using the Southern Fire Risk Assessment (SFRA) Communities at risk layer supported by local knowledge. It should be noted that not all polygons within the SFRA layer were assessed. The SFRA information was used to assist local fire departments in locating areas that could be assessed. It was not to be the sole deciding factor for determining areas that should be assessed. Fifty eight (58) areas were assessed using the Georgia Forestry Commission Form 140 for Woodland Community Wildfire Hazard Assessment. Three areas were recognized as being at extreme risk, one was designated as at high risk, twenty three were designated at moderate risk, and thirty one were classified as being low. Information on these areas is presented in tabular form in a document entitled 'Risk Summary for Areas of Concern Madison County, Georgia' located in the appendix. Assessments are organized by fire department jurisdiction. The color shading in the

spreadsheet corresponds to the colors used in the level of concern maps to show the locations of assessment areas. Some overlap occurs between jurisdictions in these maps.

#### 4) Prioritized Mitigation Recommendations

***As a significant number of fires in the County are related to incendarism, investigation of all fires deemed to be related to this cause should be standard practice.***

The following recommendations were developed during follow-up meetings with County and State fire response agencies. A priority order was determined based on which mitigation projects would best reduce the hazard of wildland fire to communities and infrastructure. The following priorities were considered. Community Hazard and Structural Ignitability Reduction

- Wildland Fuel reduction or modification
- Improvements to capabilities of Wildland response agencies
- Public Education regarding risk of wildland fire

##### **Proposed Community and Structural Ignitability Reduction Priorities:**

1. Locate lack of and improve defensible space around structures in communities at risk
2. Identify access problems that affect initial attack in communities at risk
3. Identify structural ignitability concerns in communities at risk
4. Identify and resolve problems with codes, covenants, or ordinances that negatively influence structural ignitability

##### **Proposed Wildland Fuel Reduction or Modification Priorities:**

1. Reduction or modification of wildland fuel in proximity to communities at risk
2. Reduction or modification of fuel concentrations in shared spaces inside communities at risk

##### **Proposed Improvements to capabilities of Wildland Response agencies:**

1. Identify needs and improve training and qualification of wildland response agencies
2. Identify needs and recommend equipment acquisitions for wildland response agencies

##### **Proposed Education and Outreach Priorities:**

1. Improve public knowledge in communities at risk and in the general population of Madison County regarding Firewise principles.
2. Identify opportunities and achieve Firewise USA certification for communities at risk.
3. Notification of communities at risk regarding wildland fire hazard
4. Improvements to public notification during periods of high to extreme fire danger.

## 5) Action Plan

### POTENTIAL FUNDING SOURCES:

As funding is questionable in these times of tight government budgets and economic uncertainty, unconventional means should be identified whereby the need for funding can be reduced or eliminated.

#### Publications / Brochures –

- FIREWISE materials are available for cost of shipping only at [www.firewise.org](http://www.firewise.org).
- Another source of mitigation information can be found at [www.nfpa.org](http://www.nfpa.org).
- Access to reduced cost or free of charge copy services should be sought whereby publications can be reproduced.
- Free of charge public meeting areas should be identified where communities could gather to be educated regarding prevention and firewise principles.

#### Mitigation –

- Community Protection Grant:
  - USFS sponsored prescribed burn program. Communities with at risk properties that lie within 3 miles of the USFS border may apply with the GFC to have their forest land prescribed burned free of charge.
- FEMA Mitigation Policy MRR-2-08-01: through GEMA - Hazard Mitigation Grant Program (HMGP) and Pre Disaster Mitigation (PDM)
  - To provide technical and financial assistance to local governments to assist in the implementation of long term cost effective hazard mitigation measures.
  - This policy addresses wildfire mitigation for the purpose of reducing the threat to all-risk structures through creating defensible space, structural protection through the application of ignition resistant construction, and limited hazardous fuels reduction to protect life and property.
  - With a complete and registered plan (addendum to the State plan) counties can apply for pre- mitigation funding. They will also be eligible for HMGP if the county is declared under a wildfire disaster.
- GFC - Plowing and burning assistance can be provided through the Georgia Forestry Commission as a low cost option for mitigation efforts.
- Individual Homeowners –
  - In most cases of structural protection ultimately falls on the responsibility of the community and the homeowner. They will bear the cost; yet they will reap the benefit from properly implemented mitigation efforts.
  - GEMA Grant - PDM (See above)

Ultimately it is our goal to help the communities by identifying the communities threatened with a high risk to wildfire and educate those communities on methods to implement on reducing those risks.

5) Action Plan Continued

Steps to implement Community Hazard and Structural Ignitability Priorities

Hazard	Specific Action and Responsible Party
Lack of Defensible Space	Using the risk summary in section 3, each department should conduct inspections of communities at risk in their jurisdiction or area of response for lack of defensible space. Findings will be conveyed to residents and treatment methods will be recommended in accordance with Firewise principles.
Access problems	Using the County Base map the Georgia Forestry Commission and Madison County Fire officials should visit all identified communities at risk for the purpose of locating and resolving access difficulties. This inspection should extend into the wildland adjacent to the communities at risk looking for hindrances to suppression tactics
Structural Ignitability	Madison County Fire officials should examine structures for structural ignitability concerns at the time when the communities at risk are inspected for lack of defensible space. Using Firewise guidelines for reducing structural ignitability, (a checklist from the Firewise web site could be used) structures should be assessed and findings conveyed to residents. This could be through use of media or by direct contact.
Codes and Ordinances	Madison County and municipal Fire Marshalls should closely examine all codes and ordinances for gaps and oversights which could cause problems in the wildland fire arena. Examples include proximity of propane tanks to structures, accumulations of debris, road widths in new developments, lack of proper identification pertaining address or street names etc..

In regard to priority, the above steps should first extend to the higher numbers in the extreme category from the risk summary as these communities are at a higher degree of risk. **Another means of reaching homeowners would be to distribute literature on Firewise principles through the building permit office. Checklists for Homeowners are available on the Georgia Forestry Commission public website <http://www.gfc.state.ga.us> . Look under Forest Fire – Wildland Urban Interface- Firewise**

## Steps to implement Fuel Reduction or Modification Priorities

Hazard	Specific Action and Responsible Party
Hazardous Wildland Fuel Accumulations	<p>The Georgia Forestry Commission will prioritize prescribed burning projects adjacent to Communities at risk where burning is determined to be appropriate. A suggested prescribed burn project to reduce fuels near the Rural Urban interface area near the intersection of State Hwy. 98 and Rogers Mill Rd is outlined on an aerial photograph in the appendix. This project is a suggested model of action that could be conducted to protect interface or communities that are in proximity to wildland fuel. Property lines and landowner information has not been verified in regard to this suggested project. The landscape fuel break depicted in the northwest quadrant is representative of a means to reduce fuel that could involve multiple landowners or take advantage of natural breaks without burning large blocks. In communities where burning is not feasible or unfavorable to residents the use of permanent fuel breaks could be considered. These breaks could be installed by the Georgia Forestry Commission.</p>
Hazardous Fuel Accumulations in communities and hindrances to suppression	<p>Using the risk summary in section 3, Fire departments could conduct community clean up days in communities at risk in their respective jurisdictions aimed at reducing hazardous fuels and hindrances to suppression in shared community space. Residents would be provided with guidance and access to disposal alternatives for materials removed.</p>

5) Action Plan Continued

Steps to implement improvements to wildland response capability

Improvement needed	Responsible Party and specific action
Improve training and qualification of Madison County Wildland firefighters	Chief Ranger Gary Roberts, Assistant District Manager Shawn Alexander of the Georgia Forestry Commission and Madison Co Fire Chief(s) should examine all training records for personnel under their supervision. All personnel should be certified Georgia Basic Wildland Firefighters or higher in qualification. Additional training and qualification should be sought for personnel identified in Madison County who are assigned specific Incident Command System (ICS) functions. Sources for available funds for training should be sought at State and Federal levels.
Improve or acquire wildland firefighting equipment	All stations for Madison County Fire Departments should inventory their present equipment relating to their wildland capability. Funding sources should be investigated from available grants or other sources. Needs for job specific wildland responses should be examined by Chief Ranger Roberts and Fire Chiefs

Steps to educate or inform the Public regarding wildland fire prevention and responsibilities

Opportunity	Responsible Party and Specific Action
Improve Public Education through direct contact	Prior to the onset of fire season(s) rangers of the Georgia Forestry Commission and Madison County Fire personnel should conduct Firewise meetings in conjunction with normally scheduled fire department meetings. People living in or near extreme and high risk communities should be invited to these meetings by use of door to door campaigns or by mailbox flyers. Notices regarding these meetings could be placed in local post offices or stores near communities at risk. A Firewise display should be acquired and utilized at this meeting. This display would be retained by the Franklin Hart Elbert Madison office of the Georgia Forestry Commission and used for all Firewise meetings in Madison County. Local news media should be invited to these meetings. Goals for potential Firewise certified communities in Madison County could be considered after these meetings are completed.
Improve Public Education through use of media	Prior to the onset of fire season(s) or during periods of particularly high fire danger use of the media should be stepped up by personnel of the Georgia Forestry Commission. This should include use of all available media in the County. PSA's should be run weekly during periods of high to extreme fire danger. Signs or poster boards could be developed for display in public spaces near communities at risk advising residents that they live in areas that are susceptible to wildland fire and directing them to sources of information regarding wildland fire safety.

## Timetables for Actions

### Steps to implement Community Hazard and Structural Ignitability Priorities

- Steps to examine communities at risk for defensible space and structural ignitability should begin as soon as practical with existing work schedules. This should occur prior to the time when most citizens begin fall or spring cleanup projects in order for recommendations regarding improvements to defensible space and reduction of structural ignitability to coincide with these seasonal actions.
- Pre-planning to examine access and suppression problems should take place as soon as possible by fire department jurisdiction.
- Codes and Ordinances should be examined as soon as possible.

### Steps to implement Fuel Reduction or Modification Priorities

- The prescribed burn project to reduce fuels near the Rogers Mill and Hwy 98 Community should take place in late winter 2010-2011. Any other priority burn projects or installation of pre suppression fuel breaks should take place during this same window.
- Steps to reduce fuels in communities at risk should coincide with steps to improve defensible space and reduce structural ignitability –fall 2010. Any actions that do not take place during this window could be undertaken during the late winter of 2010 - 2011.

### Steps to implement improvements to wildland response capability

- Cooperation between state and local wildland suppression forces regarding improvements to training and equipment should begin immediately.

### Steps to educate or inform the Public regarding wildland fire prevention and responsibilities

- Direct contact with residents in Communities at risk should take place as soon as possible.
- The use of media should coincide with the above action.



## Assessment of Actions

### Reduction of Community hazard and structural ignitability

- Direct measurement of the number of communities assessed would be the appropriate measure of success
- Any meetings that result in cooperation between wildland departments should be logged along with minutes of those meetings. Goals should be set and reviewed after each meeting.
- Any changes to or additions to codes and ordinances would be an obvious measure of success.

### Steps to implement Fuel Reduction or Modification Priorities

- Acres burned would be the appropriate measure for fuel reduction. A direct measure of linear feet of firebreaks would be an appropriate measure for pre suppression breaks.
- Fuel reduction in communities at risk would be measured by the number of communities affected and number of projects completed.

### Steps to implement improvements to wildland response capability

- A direct measure of the number of capabilities or qualifications gained would be the appropriate measure of success.
- Any equipment acquired or any equipment brought up to national standards would be the appropriate measure of success.

### Steps to educate or inform the Public regarding wildland fire prevention and responsibilities

- Direct measurement of the number of persons contacted, literature distributed, public notices posted, news articles published, radio programs aired, etc. would be the best measure of success.

## 6) Wildfire Pre-Suppression Plan

This document is located in the appendix of this plan.

## 7) County Base and Hazards maps

The maps for Level of Concern, Surface Fuels, Wildland Fire Susceptibility, and Historical Fire Occurrence are located in the appendix of this plan.

## 8) Appendix

Wildfire Pre-Suppression Plan

County Base and Hazards maps

Fuel Modification project Hwy 98 Rogers Mill Rd Photograph

Risk Summary table

All files that make up this plan are available in an electronic format from the Georgia Forestry Commission. This is especially useful in regard to viewing the PDF files that make up the County Base and Hazards maps in that it will allow for increased magnification and better resolution.



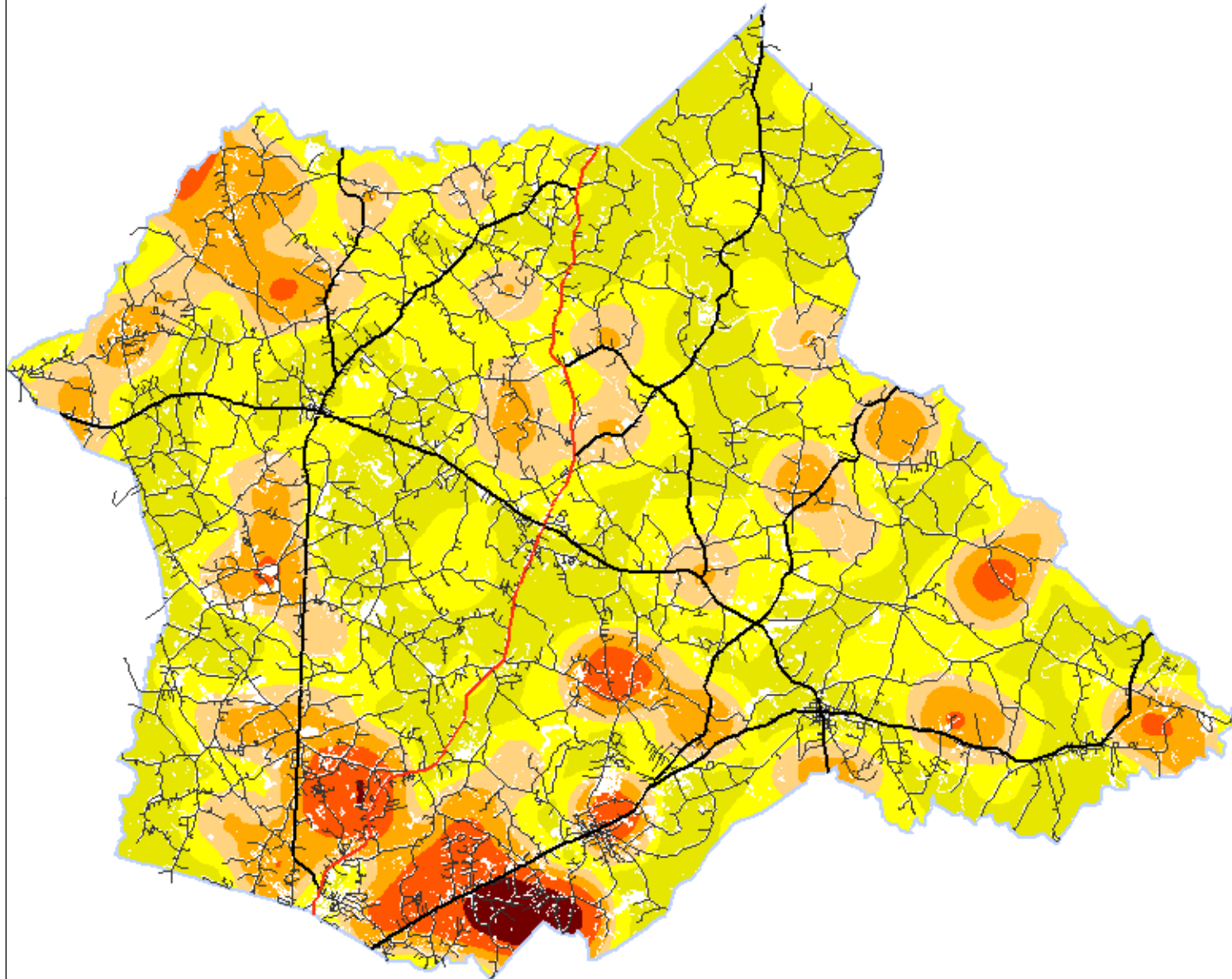
**P. O. Box 819  
Macon, GA 31202  
1-800-GA-TREES  
GaTrees.org**

*The Georgia Forestry Commission provides leadership,  
service, and education in the protection and conservation of  
Georgia's forest resources.*

*An Equal Opportunity Employer and Service Provider*

# Madison County Fire Occurrence Areas

Published Results Dataset

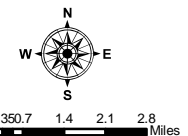


- Roads, Level 2 - 195-Madison, GA
- Roads, Level 3 - 195-Madison, GA
- Roads, Level 4 - 195-Madison, GA
- County Boundaries - 195-Madison, GA

Fire Occurrence Areas (fires/1000 acres/year) - 195-Madison, GA

<VALUE>

- Non-Burnable
- 0 - 0.024
- 0.025 - 0.049
- 0.050 - 0.099
- 0.100 - 0.199
- 0.200 - 0.299
- 0.291 - 0.399
- 0.400 - 0.599
- 0.600 - 0.999
- 1.000 - 1.000



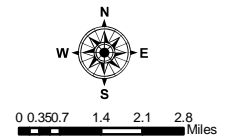
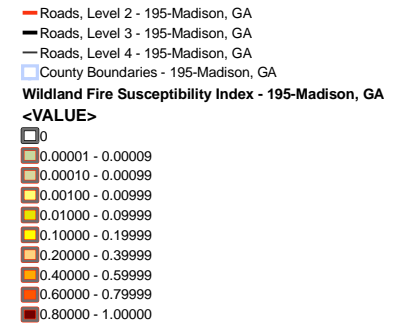
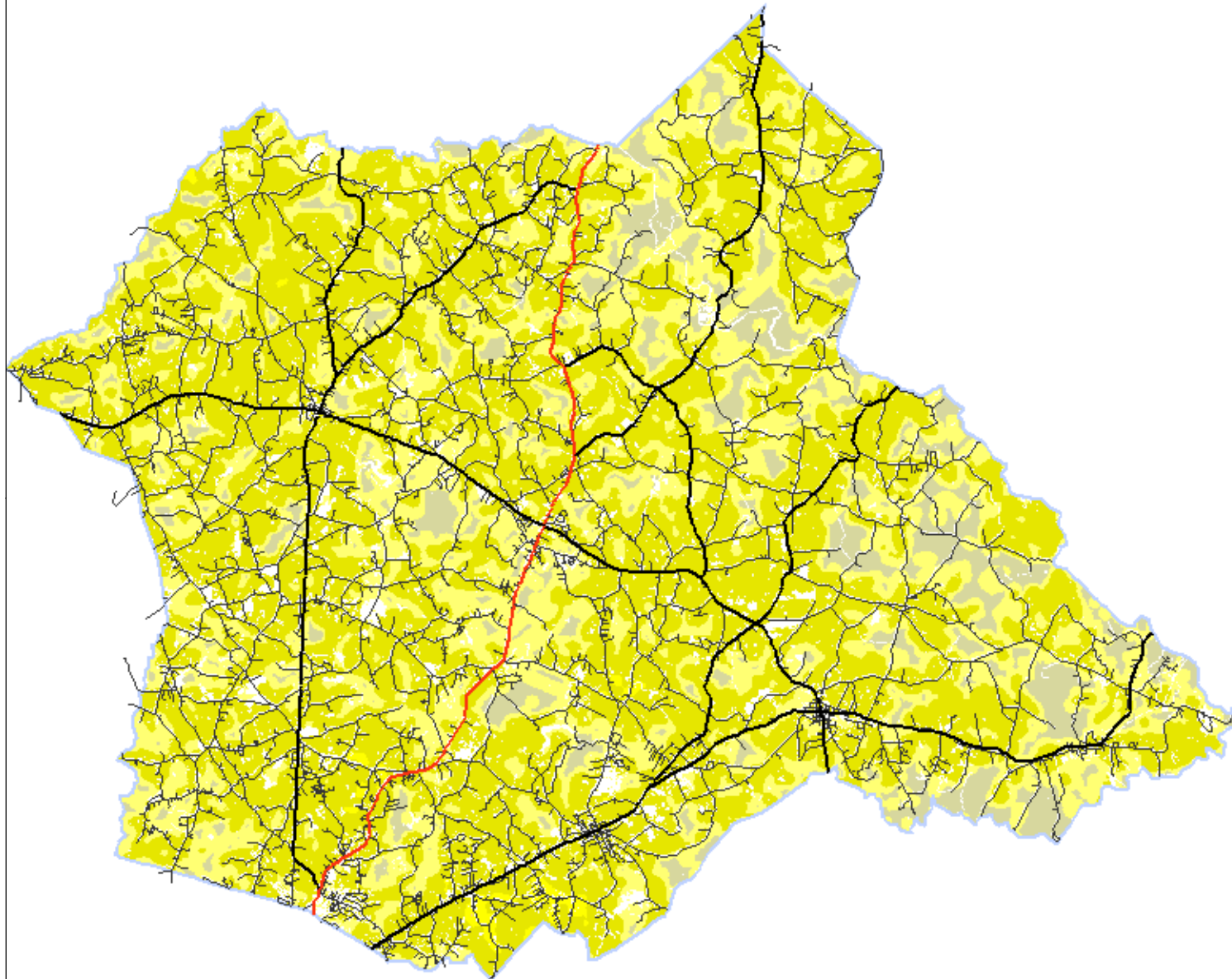
10/26/2010

Disclaimer: The user assumes the entire risk related to their use of the SFRAS application and either the published or derived maps from the application. The Southern Group of State Foresters is providing these data "as is" and disclaims any and all warranties, whether expressed or implied, including (without limitation) any implied warranties of merchantability or fitness for a particular purpose. In no event will the Southern Group of State Foresters be liable to you or to any third party for any direct, indirect, incidental, consequential, special or exemplary damages or lost profit resulting from any use or misuse of these data.



# Madison County Wildland Fire Susceptibility Index

Published Results Dataset



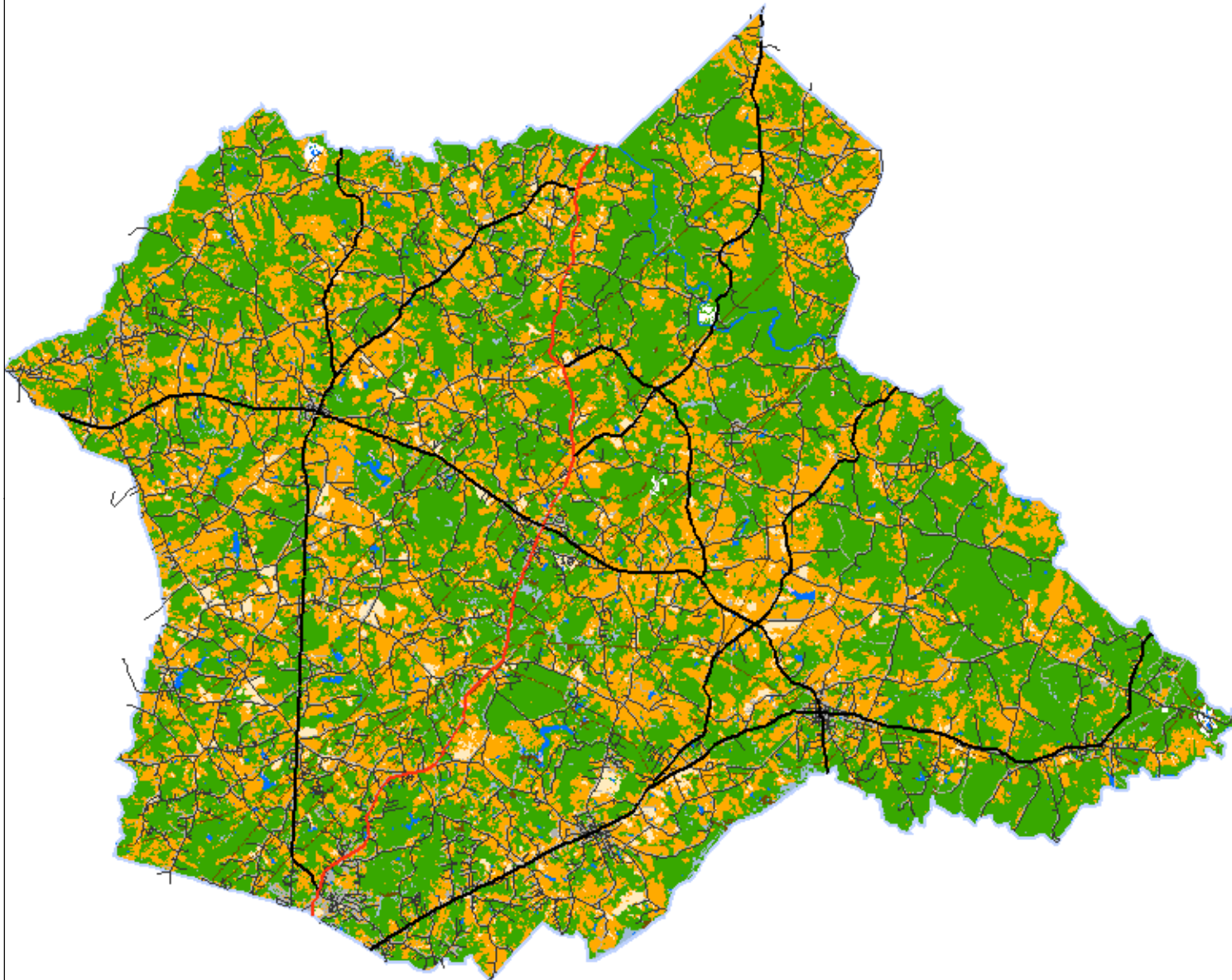
2/17/2011

Disclaimer: The user assumes the entire risk related to their use of the SFRAS application and either the published or derived maps from the application. The Southern Group of State Foresters is providing these data "as is" and disclaims any and all warranties, whether expressed or implied, including (without limitation) any implied warranties of merchantability or fitness for a particular purpose. In no event will the Southern Group of State Foresters be liable to you or to any third party for any direct, indirect, incidental, consequential, special or exemplary damages or lost profit resulting from any use or misuse of these data.

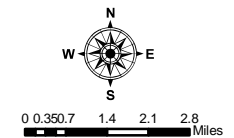


# Madison County Surface Fuels

Published Results Dataset



- Roads, Level 2 - 195-Madison, GA
- Roads, Level 3 - 195-Madison, GA
- Roads, Level 4 - 195-Madison, GA
- County Boundaries - 195-Madison, GA
- FBPS 1 - Short grass (1 ft.)
- FBPS 2 - Timber (grass and understory)
- FBPS 3 - Tall grass (2.5 ft.)
- FBPS 4 - Chaparral
- FBPS 5 - Brush
- FBPS 6 - Dormant brush, hardwood slash
- FBPS 7 - Southern rough
- FBPS 8 - Closed timber litter
- FBPS 9 - Hardwood (long-needle pine) litter
- FBPS 10 - Timber (litter and understory)
- FBPS 11 - Light slash
- FBPS 12 - Medium slash
- FBPS 96 - Urban
- FBPS 97 - Non-burnable agriculture
- FBPS 98 - Water
- FBPS 99 - Non-burnable, barren



10/26/2010

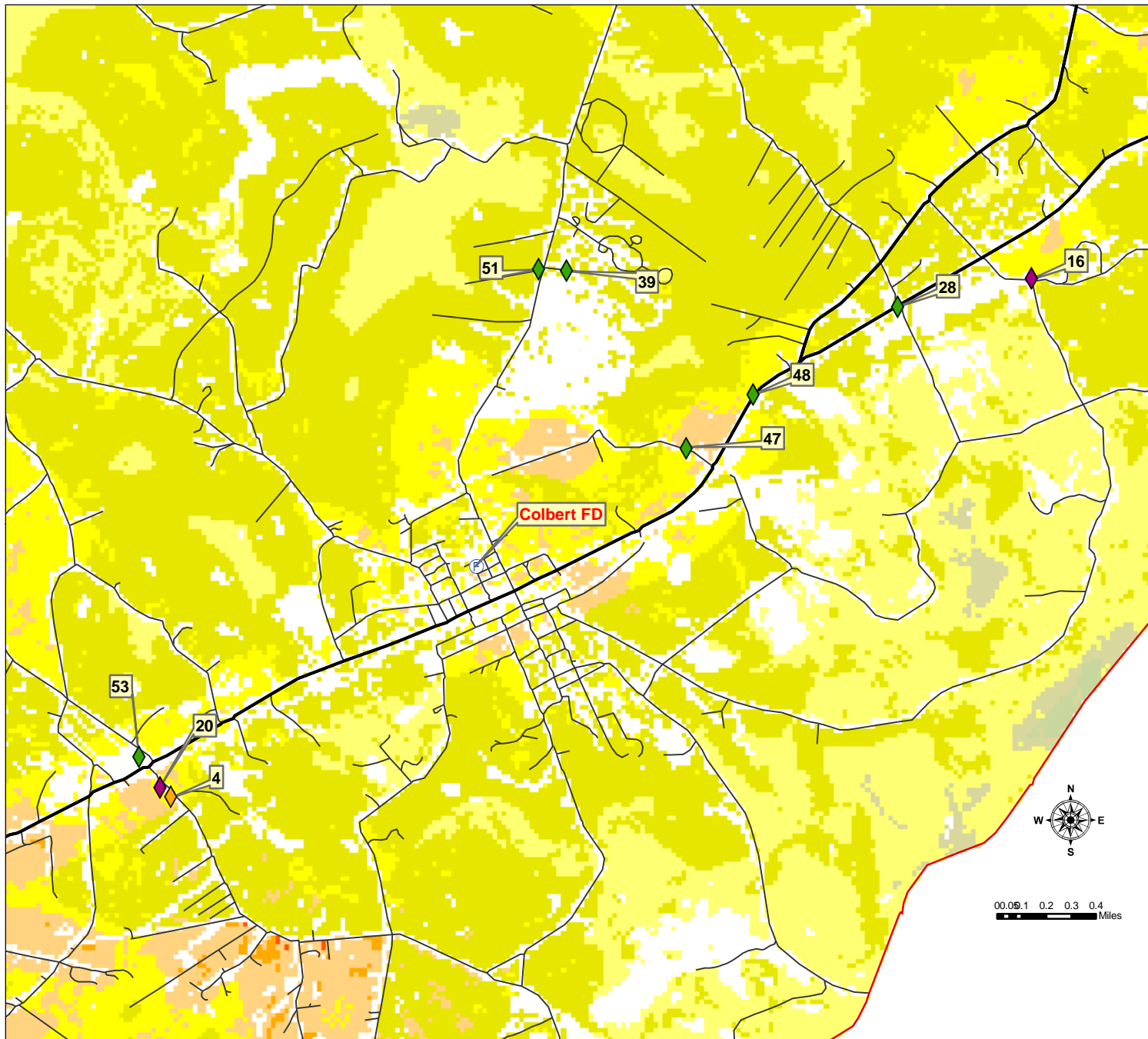
Disclaimer: The user assumes the entire risk related to their use of the SFRAS application and either the published or derived maps from the application. The Southern Group of State Foresters is providing these data "as is" and disclaims any and all warranties, whether expressed or implied, including (without limitation) any implied warranties of merchantability or fitness for a particular purpose. In no event will the Southern Group of State Foresters be liable to you or to any third party for any direct, indirect, incidental, consequential, special or exemplary damages or lost profit resulting from any use or misuse of these data.





# Colbert Jurisdiction Level of Concern

AOI: Hull LOC Description: Published Results Dataset for the AOI



Community Name or location	Map #
Development South of Hardman Morris Rd	4
Farm Rd	16
Covey Landing	20
Hwy 72,172 McCarty Dodd Rd Goss Ln.	28
Kingston Greens	39
Saddle Ridge off Charles Hart Rd	47
Tumbling Creek / Hwy 172 and 72	48
Gatewood @Colbert Danielsville Rd.	51
Sorrow Patterson Rd Foote McClellan Rd Hwy 72	53

- Area of Interest (AOI)
- Ⓧ Initial Dispatch Locations
- Roads, Level 2
- Roads, Level 3
- Roads, Level 4

### Level of Concern Index

<VALUE>

- 0
- 0.00001 - 0.0004
- 0.00041 - 0.0024
- 0.00241 - 0.0458
- 0.04581 - 0.6429
- 0.64291 - 1.3593
- 1.35931 - 3.4268
- 3.42681 - 4.9999
- 4.99991 - 14.999
- 14.9991 - 100.00

12/10/2010

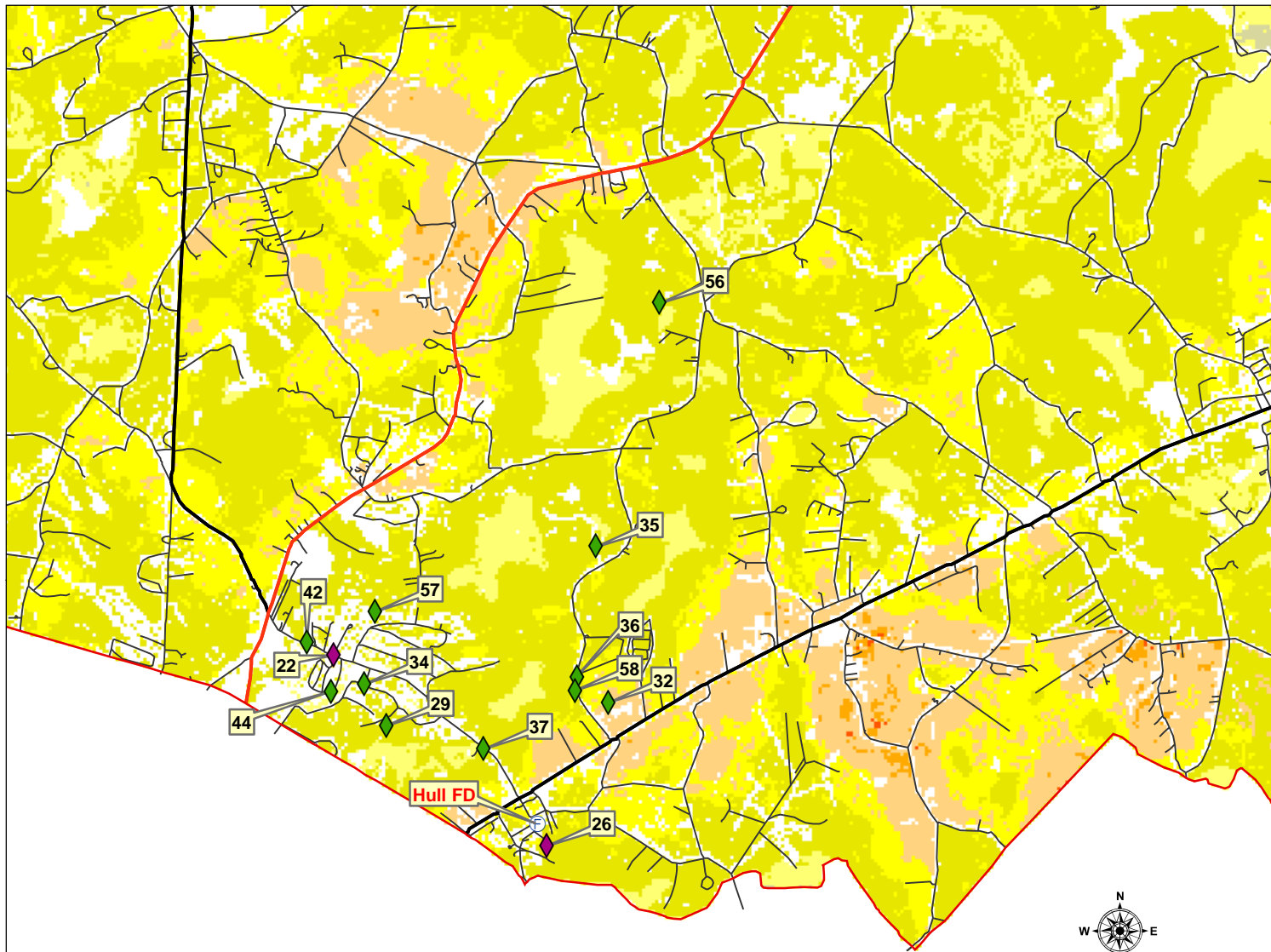
Disclaimer: The user assumes the entire risk related to their use of the SFRAS application and either the published or derived maps from the application. The Southern Group of State Foresters is providing these data "as is" and disclaims any and all warranties, whether expressed or implied, including (without limitation) any implied warranties of merchantability or fitness for a particular purpose. In no event will the Southern Group of State Foresters be liable to you or to any third party for any direct, indirect, incidental, consequential, special or exemplary damages or lost profit resulting from any use or misuse of these data.





# Hull Jurisdiction Level of Concern

AOI: Hull LOC Description: Published Results Dataset for the AOI



Oakdale / Grady Dr. / Gillespie Dr.	22
Charlie Bolton Rd	26
Woodland Lane	29
Tranquility Forest	32
Virginia Lane Chestnut Lane	34
Spratlin Mill Dr.	35
Millbrook Circle	36
Hidden Falls Dr.	37
Arthur Rd Williamson Dr. Sweetgum Alley	42
Windsor Heights	44
Spratlin Pond Dr.	56
Hannah Heights	57
South Creek	58

- Area of Interest (AOI)
- Initial Dispatch Locations
- Roads, Level 2
- Roads, Level 3
- Roads, Level 4

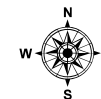
### Level of Concern Index

<VALUE>

0
0.00001 - 0.0004
0.00041 - 0.0024
0.00241 - 0.0458
0.04581 - 0.6429
0.64291 - 1.3593
1.35931 - 3.4268
3.42681 - 4.9999
4.99991 - 14.999
14.9991 - 100.00

12/9/2010

Disclaimer: The user assumes the entire risk related to their use of the SFRAS application and either the published or derived maps from the application. The Southern Group of State Foresters is providing these data "as is" and disclaims any and all warranties, whether expressed or implied, including (without limitation) any implied warranties of merchantability or fitness for a particular purpose. In no event will the Southern Group of State Foresters be liable to you or to any third party for any direct, indirect, incidental, consequential, special or exemplary damages or lost profit resulting from any use or misuse of these data.

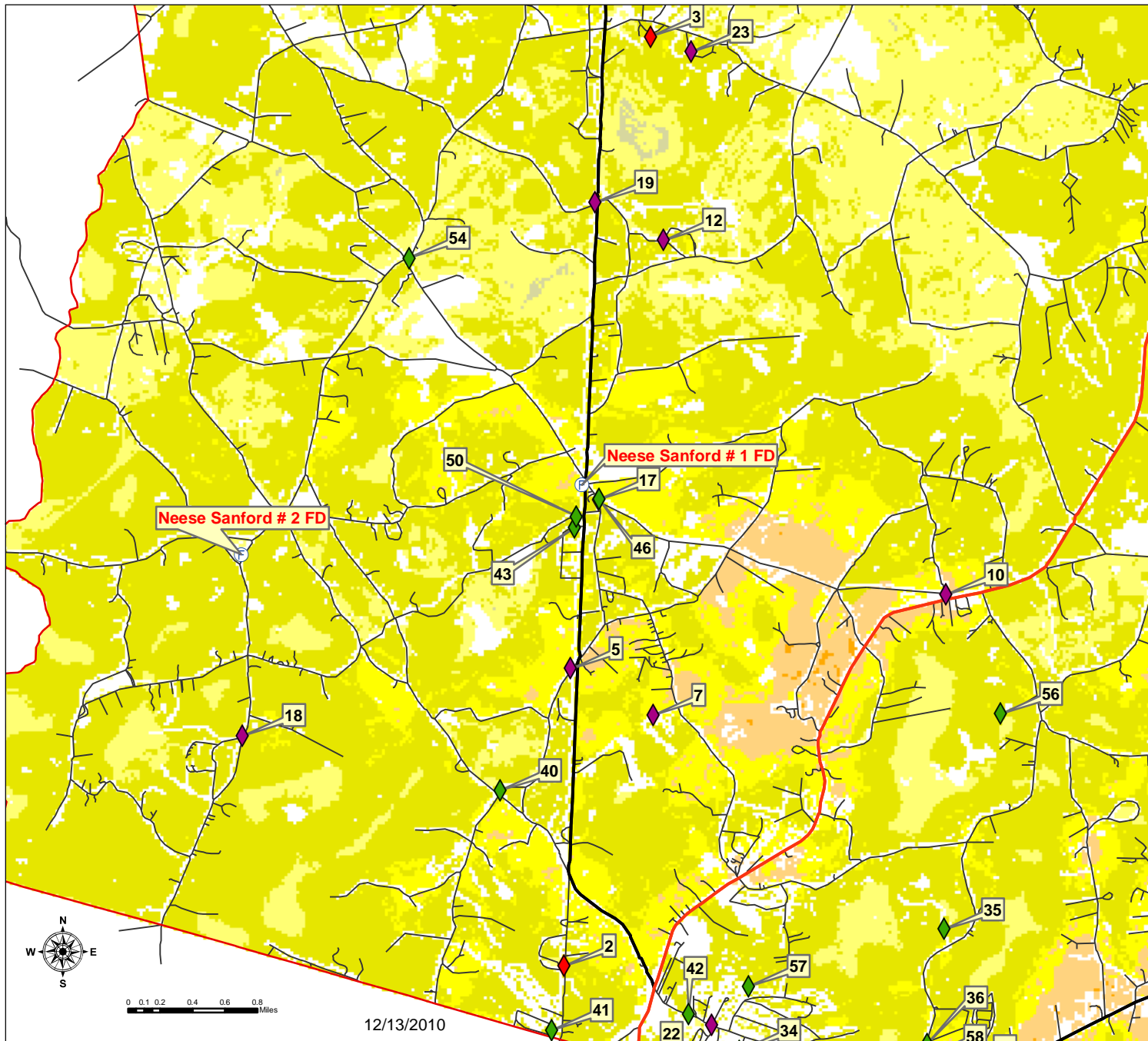


0 0.1 0.2 0.4 0.6 0.8 Miles



# Neese Sanford Jurisdiction Level of Concern

AOI: Hull LOC Description: Published Results Dataset for the AOI



Rugg Rd (Bugg Rd)	2
Moons Grove Church Rd Beecher Hill Rd	3
Hwy 106 Sanford Rd Smith Rd	5
Garnett Ward Rd Piedmont Park Area	7
Buddy Moore Rd Strickland Cir. Diamond Hill	10
Neese	10
Northwood Circ. Shady Ln Griffith Rd Stone Stew.	12
Garnett Ward Rd Glen Rd Sanders Rd	17
Nowhere Rd Horace Elnut Circle	18
Hwy 106 Stone Stewart Rd Griffith Rd	19
Moons Grove Church Rd Corey Rd	23
West of Helicon Springs Rd at County Line	40
Amberly Drive Belhaven Lane Hwy 106	41
Hwy 106 Oak Circle	43
Diamond Hill Neese Willis Glen Rds Hwy 106	46
Crabapple Hollow Rd off Hwy 106	50
Sanford Rd Dillard Rd Nowhere Rd	54

- Area of Interest (AOI)
- Ⓧ Initial Dispatch Locations
- Roads, Level 2
- Roads, Level 3
- Roads, Level 4

### Level of Concern Index

<VALUE>

- 0
- 0.00001 - 0.0004
- 0.00041 - 0.0024
- 0.00241 - 0.0458
- 0.04581 - 0.6429
- 0.64291 - 1.3593
- 1.35931 - 3.4268
- 3.42681 - 4.9999
- 4.99991 - 14.999
- 14.9991 - 100.00

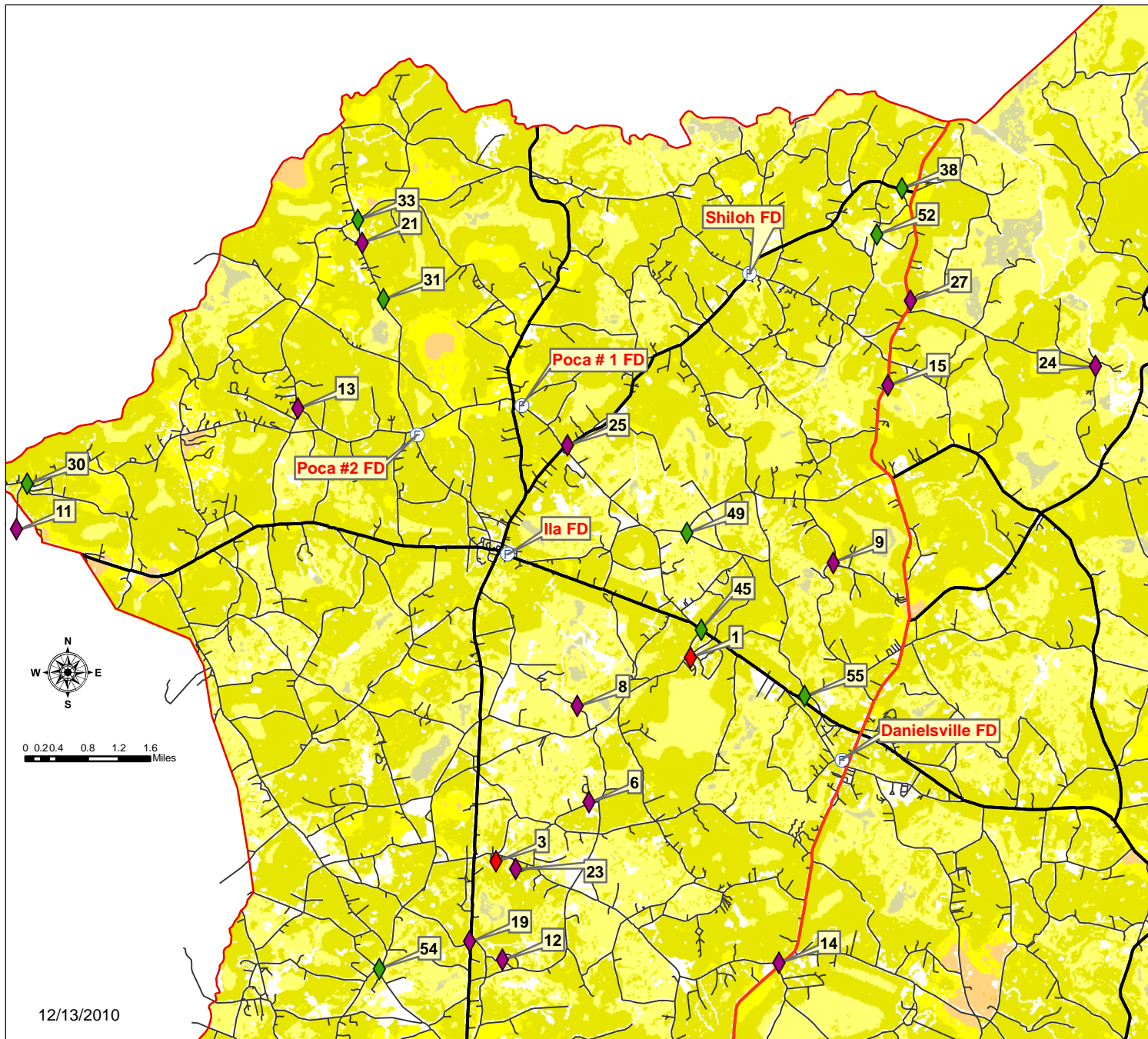
Disclaimer: The user assumes the entire risk related to their use of the SFRAS application and either the published or derived maps from the application. The Southern Group of State Foresters is providing these data "as is" and disclaims any and all warranties, whether expressed or implied, including (without limitation) any implied warranties of merchantability or fitness for a particular purpose. In no event will the Southern Group of State Foresters be liable to you or to any third party for any direct, indirect, incidental, consequential, special or exemplary damages or lost profit resulting from any use or misuse of these data.



12/13/2010

# North Madison Jurisdictions Level of Concern

AOI: Hull LOC Description: Published Results Dataset for the AOI



Mae Drive	1
Doe Run Circle Chandler Farm Rd	8
Blacks Creek Church Rd Mize Rd @ County line	11
Wesley Chapel Rd Morgan Rd Jot em down Rd	13
Hwy 174 and Friendship Church Rd.	25
Blacks Creek Church Rd McGinnis Chandler Rd	30
Woodland Dr. Roger Mill Rd Lakeview Circle	45
Miller McElrath Rd Peach Orchard Rd	49
Michigan Trail off Cowart Toole Rd	6
Collins Bridges Rd Rock Quarry Rd.	9
Moon Grove Church Rd Clegborne Rd Hwy 29	14
Camp Kiwanas Old Wildcat Bridge Rd	24
Mason Mill	15
Manley Martin Rd Hwy 29	27
Hwy 174 Hwy 29	38
Hudson River Church Rd Arrowhead Lane Jot Em	21
Off New Haven Church Rd	55
Hwy 29 east near Long Peebles Rd. Intersec.	52
Hudson River Church Rd	31
Hudson River Church Rd	33

**Area of Interest (AOI)**  
 Area of Interest (AOI)

**Initial Dispatch Locations**  
 Initial Dispatch Locations

**Roads, Level 2**  
 Roads, Level 2

**Roads, Level 3**  
 Roads, Level 3

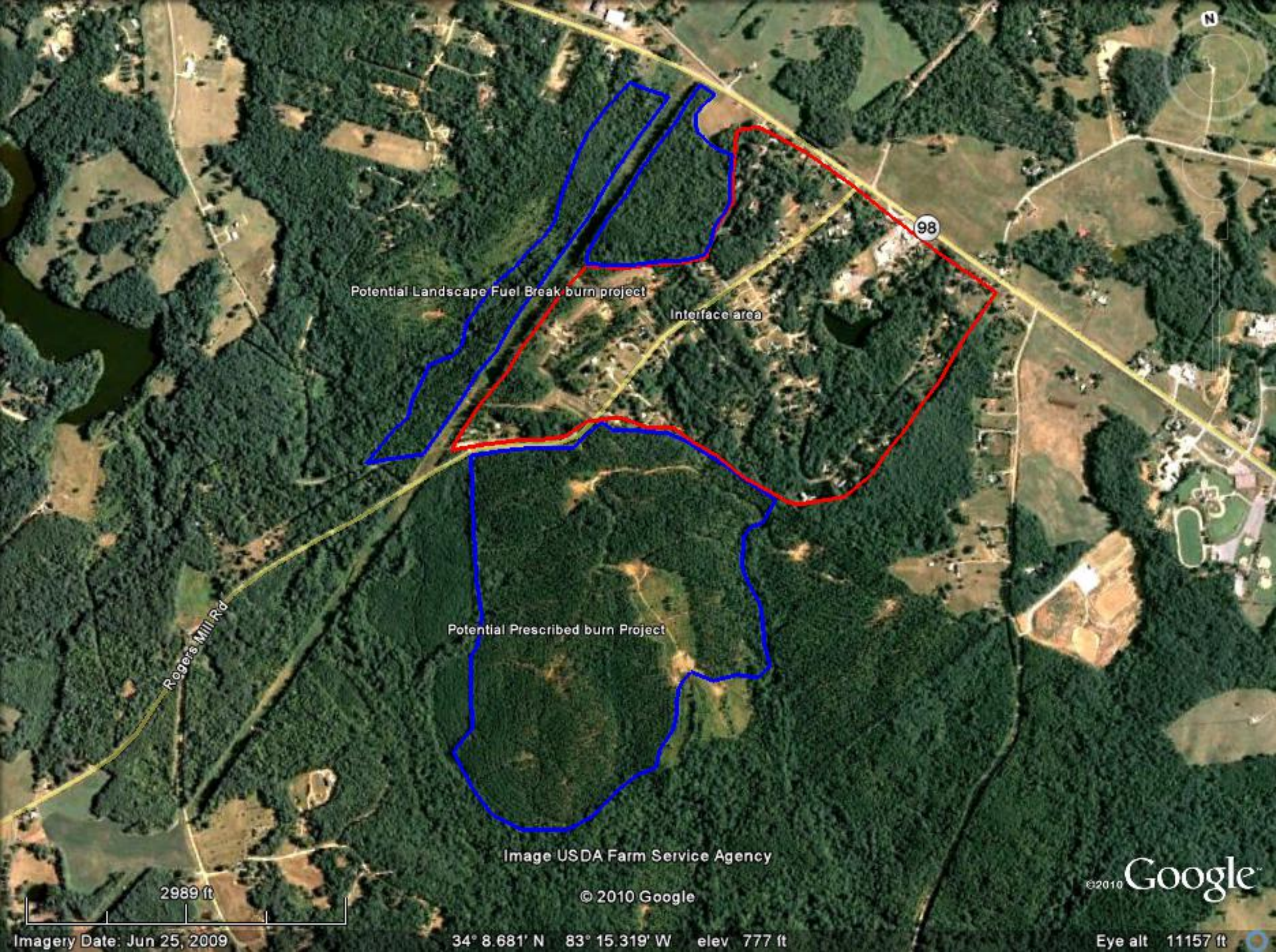
**Roads, Level 4**  
 Roads, Level 4

**Level of Concern Index**  
**<VALUE>**

	0
	0.00001 - 0.0004
	0.00041 - 0.0024
	0.00241 - 0.0458
	0.04581 - 0.6429
	0.64291 - 1.3593
	1.35931 - 3.4268
	3.42681 - 4.9999
	4.99991 - 14.999
	14.9991 - 100.00

Disclaimer: The user assumes the entire risk related to their use of the SFRAS application and either the published or derived maps from the application. The Southern Group of State Foresters is providing these data "as is" and disclaims any and all warranties, whether expressed or implied, including (without limitation) any implied warranties of merchantability or fitness for a particular purpose. In no event will the Southern Group of State Foresters be liable to you or to any third party for any direct, indirect, incidental, consequential, special or exemplary damages or lost profit resulting from any use or misuse of these data.





Potential Landscape Fuel Break burn project

Interface area

Potential Prescribed burn Project

Rogers Mill Rd

98

N

Image USDA Farm Service Agency

© 2010 Google

©2010 Google

2989 ft

Imagery Date: Jun 25, 2009

34° 8.681' N 83° 15.319' W elev 777 ft

Eye alt 11157 ft

**Contents Information  
Fire Plan**

County	Date of Latest Revision
MADISON 095	3/11

**Fire Plan Section Heading Information Contained**

**Wildfire Situation Analysis** Wildfire response considerations, policies, co-operators response considerations, manning and action guides to outline detection, initial attack, fire prevention, personnel availability and equipment readiness/staging considerations.

**Command Section**, Incident Command functions, Safety, Liaison, Information Officer position, information and contact lists.  
(Law enforcement, DOT, and co-operating agencies for Staff officers.)

**Operations Section**, Staging areas/assigned mgrs.,div/group supervisors, ST/Task Force leaders, Air Ops., helispots, Ops. map

**Plans Section**, GFC, and all co-operator fire resources in the county/district SITSAT analysis of complex fire incidents, narrative describing county, locked gates/access problems, 300 ac+ plantations high hazard, SSA's, traffic, wildland/urban interface, 5 yr. fire occurrence, airports, required maps etc., Documentation, Demob. plans and Technical Specialists.

**Logistics Section**Service: Communications capabilities of GFC and co-operators and related information, Medical: EMT, hospitals, Dr.s, etc., Food unit suppliers, vendors, mobile kitchen capabilities, personnel etc., Support: Supply vendors, providers, equip. repair sources, fueling, equip. rentals etc., unit supplies, Facilities: Unit capability, co-operators, pre-planned C.P.'s, staging, base, motels, etc., Ground Support: mobile repairs, co-operators, personnel transportation, etc.

**Finance Section**, Time keeping procedures/reporting, Procurement: Vendor Contracts, lodging, food service, parts/supplies agency contracts, local vendor information etc., signed agreements for water pickup points, base camps, staging areas, etc., Compensation/Claims reporting procedures injuries/accident paperwork, GFC physicians etc.  
Costs, unit and reporting procedures

**Wildfire Situation Analysis  
Fire Plan**

<b>County</b>	<b>Date of Last Revision</b>
MADISON 095	3/11

The purpose of this section of the incident plan is to provide ready access to pre-planned personnel functions, assignments, and resource information for incident management. While "co-operator" personnel and agencies are listed that will be active in other types of *non-fire incidents*, ***the personnel and resources which are identified in this section have been done so for their primary knowledge, training, skills and abilities to be an interagency co-operator on wildland fires with the Georgia Forestry Commission.***

All responses to wildland fire and other emergency response incidents will take place under the Incident Command System guidelines and all other policies and guidelines as outlined in the general preface of this plan.

As the greatest majority of wildland fires are contained and controlled by the initial attack forces, most fire situations are not expected to reach a level of complexity requiring activation of numerous sections of the ICS organization outlined in this section. All position requirements and job responsibilities **will be** considered and accomplished as required during "routine" or Type 4 fire responses by the initial attack crews and in events of fire/ incident escalation or increases in complexity. ICS considerations will "start early" in order that various functions and sections of the ICS organization can be implemented as the need arises beginning at the lowest level and utilizing local resources which are ***pre-designated*** throughout this appendix.

The NWCG FIRELINE HANDBOOK #3 should be available to personnel assigned to position responsibilities and the position checklists followed in the accomplishment of the assigned duties.

**INITIAL ATTACK-PREVENTION-RESOURCE AVAILABILITY-EQUIPMENT STAGING**

Georgia Forestry Commission response to wildland fire situations will take place as outlined in the **"Proposed Manning and Action Guidelines"** included elsewhere in this incident plan. Refer to the manning and action guidelines for planning purposes.

Geographic and wildfire situation information is outlined under the **Plans Section - Situation Unit** section of this fire plan.

**Command Section  
Fire Plan**

<b>County</b>	<b>Date of Last Revision</b>
MADISON 095	3/11

**INCIDENT COMMAND**

**Georgia Forestry Commission**

All incidents of initial attack, in which the Georgia Forestry Commission has agency jurisdiction, will be under command of the highest ranking member of the GFC initial attack crew. In cases of multi-agency response, the acting GFC incident commander should initiate contact and "Unified Command" with the responding fire agency. Forest rangers who will be directly involved in attack of the fire must consider the applications of ICS, fulfill the job responsibilities of ICT4 and plan accordingly. As the fire and responsibilities of incident command escalate, the GFC commander should provide as thorough a briefing as necessary to the unified commander and district dispatch to insure a smooth transition when his/her position is relieved.

In the event of an extended attack,( type III incident or larger), or whenever the chief forest ranger is on scene, the chief ranger will serve as the GFC incident commander and fulfill job responsibilities of ICT4. Unified incident command personnel will be highest ranking assisting fire agency representatives.

All personnel and available resources to fill respective ICS positions, are listed under the Plan Section; Resources Unit, section of the fire plan.

**GFC INCIDENT COMMAND UNIFIED I.C. PERSONNEL AGENCY**

<b>NAME</b>	<b>AGENCY</b>	<b>POSITION</b>
GARY ROBERTS	GEORGIA FORESTRY COMMISSION	CHIEF RANGER SENIOR / E-F-H-M
MARC PERRY	MADISON CO FIRE ASSO.	CHIEF
JOHNNY BRIDGES	COUNTY EMA	DIRECTOR
KIP THOMAS	MADISON CO.	SHERIFF

-----  
General Comments on Command Information:

**Command Staff  
Fire Plan**

<b>County</b>	<b>Date of Last Revision</b>
MADISON 095	3/11

**SAFETY OFFICER**

Personnel who have been identified to be qualified to serve in the position of Safety Officer for wildland fire incidents within this county are listed as follows:

<b>Name</b>	<b>Agency</b>	<b>Title</b>	<b>Radio Freq.</b>	<b>ICS Certified ?</b>
Jason Lewis	MADISON CO. EMS	DIRECTOR	154-385	No

-----  
Safety officer contact list for this county:

<b>Emergency Medical</b>	<b>Phone # or how contacted</b>	<b>Radio Freq.</b>	<b>Location</b>	<b>Type Equipment</b>
MADISON CO. EMS	795-2300 911	154-385	DANIELSVILLE,GA.	AMBULANCE
1 <sup>st</sup> Responders	911	154-385	Madison Co.	Medical

Hospitals

<b>Name of Hospital</b>	<b>Phone #</b>	<b>Location</b>	<b>Trauma/Burn Center/Life Flight?</b>
Drs. Hospital	911	Augusta, Ga.	Burn Center
Athens Reg.	911	Athens, Ga.	Trauma Center
St. Marys Hospital	911	Athens, GA	Hospital

-----  
Note: Additional information required by the safety officer may be found under the Medical Unit section of the fire plan. GFC fireline safety policy is found on the following page.



**Command Staff  
Fire Plan**

<b>County</b>	<b>Date of Last Revision</b>
MADISON 095	3/11

**LIAISON OFFICER**

Personnel identified to serve as liaison officer for wildland fire incidents in this county are as follows:

<b>Name</b>	<b>Agency</b>	<b>Position</b>	<b>Phone #</b>	<b>Radio Freq.</b>
RANDY WILSON	DANIELSVILLE VFD	CAPTAIN	540-9242	154-385
MARC PERRY	DANIELSVILLE VFD	CHIEF	795-2300	154-385

Assisting emergency management agencies in this county are:

<b>Agency</b>	<b>Director/Supervisor</b>	<b>Telephone #</b>	<b>Type of Jurisdictional Responsibility</b>
MADISON CO. 911	DAVID CAMP	795-0893	911
SHERIFF'S OFFICE	KIP THOMAS	795-2101	LAW ENFORCEMENT
ROAD DEPARTMENT	CHARLES TEMPLE	795-5664	COUNTY ROAD MAINT.
MADISON EMS	JASON LEWIS	795-2174	EMERG. MEDICAL

-----  
A Liaison Officer should be appointed in all instances of **GEMA** emergencies or in cases of local activation of Emergency Management Agency when GFC resources will be an assisting agency and not hold jurisdictional responsibility for incident command or control.

**Command Staff  
Fire Plan**

<b>County</b>	<b>Date of Last Revision</b>
MADISON 095	3/11

**INFORMATION OFFICER**

Personnel who have been identified to serve as information officer on wildland fire incidents in this county are as follows:

<b>Name</b>	<b>Agency</b>	<b>Title</b>	<b>Phone #</b>	<b>Radio Freq.</b>
DAVID CAMP	MADISON 911	DIRECTOR	795-0893	154-385
JOHNNY BRIDGES	MADISON EMA	DIRECTOR	612-5168	154-385

**MEDIA CONTACTS FOR THIS COUNTY and SERVING THIS AREA**

<b>Type of Media</b>	<b>Contact Person</b>	<b>Telephone #</b>	<b>Location</b>
MADISON CO JOURNAL	ZACK MITCHUM	795-2765	DANIELSVILLE, GA.
WGMG 102.1	SCOTT SMITH	549-6222	ATHENS, GA.
WPUP 103.7	DON NESTER	549-6222	ATHENS, GA.
WNGC 106.1	SCOTT SMITH	549-1340	ATHENS, GA.

Assisting agency Public Information Officers


General Information:

**OPERATIONS SECTION  
FIRE PLAN**

<b>County</b>	<b>Date of Last Revision</b>
MADISON 095	1/11

**OPERATIONS CHIEF**

Operations chief will usually be filled by GFC personnel but may be assigned to co-operator personnel when approved by incident command. The chief forest ranger or his designee will

fill the ops chief position until span of control or complexity situations deem it necessary to expand the ICS organization. Usually beyond initial attack into a type III or larger incident.

**STAGING AREAS**

Staging areas have been pre-planned and named. (Refer to operations map for locations)

Staging area managers have been identified as follows:

<b>Name of Staging Area</b>	<b>Location</b>	<b>Assigned Staging Mgr.</b>	<b>Radio Freq. of Mgr.</b>
NEESE RFD	NEESE, GA.		154-385
INGLES	HWY-29		154-385
COLLINS RFD	HWY-172		154-385
ILA RFD	HWY 98		154-385
CARLTON RFD	CARLTON, GA.		154-385

All staging area communications needs will be addressed by incident communications plans, as required. When possible, use the co-operating STAM radio frequency for dispatch. Communications capabilities of resources who are ordered to report and check into a staging area will need to be considered.

**DIVISION/ GROUP SUPERVISOR**

Co-operator personnel who have been identified to serve as division/group supervisor on wildland fire in this county are as follows.

<b>Name</b>	<b>Agency</b>	<b>Radio Freq.</b>	<b>ICS Certified</b>
MARC PERRY	DANIELSVILLE VFD	154-385	No
JOHNNY BRIDGES	COMER VFD	154-385	No
WAYNE SMITH	HARRISON VFD	154-385	No
SONNY BELK	POCA VFD	154-385	No
KEITH LORD	ILA VFD	154-385	No
TERRY KIDD	CARLTON VFD	154-385	NO
TIM WYATT	COLBERT VFD	154-385	No
DONNIE EVANS	HULL VFD	154-385	No
JOHN SEAGRAVES	NEESE SANFORD	154-385	No
JEFF SEXTON	SHILOH VFD	154-385	No
TRAVIS CHAMBERS	COLLINS VFD	154-385	No

**OPERATIONS SECTION  
FIRE PLAN**

<b>County</b>	<b>Date of Last Revision</b>
MADISON 095	3/11

**STRIKE TEAM/TASK FORCE LEADERS**

Name	Agency	Radio Freq.	ICS Certified?
BRIAN KIRK	DANIELSVILLE VFD	154-385	No
WAYNE SMITH	HARRISON VFD	154-385	No
DARRELL COILE	ILA VFD	154-385	No
JOHNNY BRIDGES	COMER VFD	154-385	No

**AIR OPERATIONS BRANCH**

All air operations set up and functions will be assigned and coordinated through the district office plans section and positions will be activated as required.

Requests for Helicopter/Air Tanker support should be made by the incident command after initial request by operations section.

**AIR SUPPORT**

Airport Name	Phone #	Length of runway	Fuels available	Nearest JET-A Fuel	Pilot Facilities
PATZ FIELD ELBERTON, GA.	283-2035	4,000	100 OCT.	ATHENS	LOUNGE AND SNACK ROOM
EPPS FIELD ATHENS, GA.	354-2916	5500 FT.	100 OCT	ANDERSON ,S.C.	"
JACKSON CO. AIR PORT	367-8639	4200 FT.	100 OCT.		"

Helispots that have been pre-identified as being easily accessible for water tank or fuel set ups are as follows:

<b>Heli-Spot Name</b>	<b>GFC Block #/Location</b>	<b>General Information</b>

HELISPOTS WILL BE DESIGNATED AS INCIDENT NEEDS ARE IDENTIFIED

**Plans Section  
Fire Plan**

**RESOURCES UNIT**

<b>County</b>	<b>Date of Last Revision</b>
MADISON 095	3/11

**Georgia Forestry Commission County Unit Personnel**

<b>Name</b>	<b>Position</b>	<b>ICS Qualification</b>	<b>Equip. Assigned, Radio Call, Other spare equip.</b>	<b>ICS Type (Equip)</b>
Gary Roberts	CR	ICT4	P/U Franklin 31	VII
S. Wesley Moss	RII	ICT4	P/U Elbert-31	VII
Brannon Carey	RII	ICT4	P/U Madison 32	VII
Derek Thomason	RI	ICT4	TRPL, Elbert 61 & 71	V
Rusty Carroll	RI	FFT1	TRPL, Franklin 60 & 70	V
Douglas M. Slay	RI	ICT4	TRPL, Elbert60 & 70	VI
BJ Hulsey	RI	FFT1	TRPL Franklin 61 & 71	

-----  
**NOTE; Highlight any unit personnel that are pre-designated strike team members.**  
 -----

**District Office Personnel**

<b>Name</b>	<b>Position</b>	<b>Equip Assigned, Radio Call</b>	<b>ICS Qualification</b>
Ken Masten	District Manager	Ford Ranger 4x4 Coosa 1	Agency Rep.
Shawn Alexander	Asst. District Manager	Ford Ranger 4x4 Coosa 3	SOF, ICT3
Joan Thomas	Admin. Asst.		TIME,FSC3
Mark Wiles	Sr. Forester	Ford Ranger 4x4	PIO
Gary White	Sr.Forester	Ford Ranger 4x4	FFT2,CRWB,FOBS
TonyStrickland	Forester	Ford Ranger 4x4	FFT2
Charles Bailey	Forester	Ford Ranger 4x4	FFT2, GISS
Jeff Kastle	Forester	Ford Ranger 4x4	FFT2

General Information:

**Plans Section  
Fire Plan**

<b>County</b>	<b>Date of Last Revision</b>
MADISON 095	3/11

**RESOURCES UNIT**

**Fire Department Co-operators**

Note: Fill out 1 of these resource lists for each co-operating department:

<b>Department Name</b>	DANIELSVILLE VOLUNTEER FIRE DEPARTMENT
<b>Phone # (Non-Emergency)</b>	(706) 795-2300
<b>Station Location</b>	DANIELSVILLE STATION, DANIELSVILLE, GA.
<b>Type Department</b>	[Volunteer CITY/COUNTY]
<b>Radio Frequency</b>	154.385
<b>Chief's Name</b>	MARC PERRY

**Tactical Equipment**

Equipment	ICS Type	Radio Call	Radio Freq.
ENGINE                    1000 gallon	I	ENG1	154.385
ENGINE                    1000 gallon	I	ENG2	154.385
ENGINE                    1000 gallon	I	ENG3	154.385
BRUSH TRUCK            400 gallon	III	BRUSH 3	154.385
<b>Total Number of Personnel</b>	24 FIRE PERSONNEL		
<b>Number of GFC compatible Hand-Held Radios</b>	NONE		
<b>Does dept. have a hand tool cache</b>	YES		
<b>Any Other Type of Support Equip</b>	NONE		

-----  
General Information: RCCFD HAS GA MUTUAL AID FREQ.

MADISON 095	3/11
-------------	------

**RESOURCES UNIT**

**Fire Department Co-operators**

Note: Fill out 1 of these resource lists for each co-operating department:

<b>Department Name</b>	HARRISON VOLUNTEER FIRE DEPARTMENT
<b>Phone # (Non-Emergency)</b>	(706) 245-8756 STATION # 245-5666
<b>Station Location</b>	HARRISON STATION
<b>Type Department</b>	[Volunteer County]
<b>Radio Frequency</b>	154.385
<b>Chief's Name</b>	WAYNE SMITH

**Tactical Equipment**

Equipment	ICS Type	Radio Call	Radio Freq.
TANKER 1250 gallon	III	ENG 29	154.385
ENGINE 1000 gallon	I	ENG 28	154.385
BRUSH TRUCK 300 gallon	6	BRUSH 30	154.385
TANKER3300		TANKER 28	154.385

<b>Total Number of Personnel</b>	14 FIRE PERSONNEL
<b>Number of GFC compatible Hand-Held Radios</b>	NONE
<b>Does dept. have a hand tool cache</b>	YES
<b>Any Other Type of Support Equip</b>	NONE

-----  
 General Information: Dept has shovels no rakes



**Plans Section  
Fire Plan**

<b>County</b>	<b>Date of Last Revision</b>
MADISON 095	3/11

**RESOURCES UNIT**

**Fire Department Co-operators**

Note: Fill out 1 of these resource lists for each co-operating department:

<b>Department Name</b>	COLLINS VOLUNTEER FIRE DEPARTMENT
<b>Phone # (Non-Emergency)</b>	(706) 783-3431
<b>Station Location</b>	COLLINS DISTRICT
<b>Type Department</b>	[Volunteer County]
<b>Radio Frequencies Available</b>	154.385
<b>Chief's Name</b>	Travis Chambers 740-6222

**Tactical Equipment**

Equipment	ICS Type	Radio Call	Radio Freq.
ENGINE 1000 gallon	III	ENG-32	154.385
Tanker 32 1800 gallon		TANKER 32	154.385
Tanker 31 5000 gal		TANKER 31	154.385

<b>Total Number of Personnel</b>	16 FIRE PERSONNEL		
<b>Number of GFC compatible Hand-Held Radios</b>	NONE		
<b>Does dept. have a hand tool cache</b>	YES		
<b>Any Other Type of Support Equip</b>	NONE		

-----  
 General Information: RCCFD HAS GA. MUTUAL AID FREQ.  
 DEPT HAS RAKES AND SHOVELS

**Plans Section  
Fire Plan**

<b>County</b>	<b>Date of Last Revision</b>
MADISON 095	3/11

**RESOURCES UNIT**

**Fire Department Co-operators**

Note: Fill out 1 of these resource lists for each co-operating department:

<b>Department Name</b>	ILA VOLUNTEER FIRE DEPARTMENT
<b>Phone # (Non-Emergency)</b>	(706) 789-3580
<b>Station Location</b>	ILA STATION
<b>Type Department</b>	[Volunteer CITY/COUNTY]
<b>Radio Frequencies Available</b>	154.385
<b>Chief's Name</b>	Keith Lord

**Tactical Equipment**

Equipment	ICS Type	Radio Call	Radio Freq.
ENGINE 1000 gallon	I	ENG-9	154.385
ENGINE 1000 gallon	I	ENG-7	154.385
FIRE KNOCKER 950	III	BRUSH-8	154.385
EQUIPMENT TRUCK		SERVICE-7	154.385
TANKER 3000 GALLON		TANKER 8	154.385
ENGINE 1000 GALLON		RESERVE 7	154.385

<b>Total Number of Personnel</b>	24
<b>Number of GFC compatible Hand-Held Radios</b>	NONE
<b>Does dept. have a hand tool cache</b>	YES
<b>Any Other Type of Support Equip</b>	NO

-----  
General Information: RCCFD HAS GA MUTUAL AID FREQ.  
DEPT. HAS RAKES AND SHOVELS

**Plans Section  
Fire Plan**

<b>County</b>	<b>Date of Last Revision</b>
MADISON 0-95	3/11

**RESOURCES UNIT**

**Fire Department Co-operators**

Note: Fill out 1 of these resource lists for each co-operating department:

<b>Department Name</b>	HULL VOLUNTEER FIRE DEPARTMENT
<b>Phone # (Non-Emergency)</b>	(706) 227-0404
<b>Station Location</b>	HULL STATION, HULL GEORGIA
<b>Type Department</b>	[Volunteer CITY / COUNTY]
<b>Radio Frequencies Available</b>	154.385
<b>Chief's Name</b>	DONNY EVANS

**Tactical Equipment**

Equipment	ICS Type	Radio Call	Radio Freq.
ENGINE                    1000 gallon	I	ENG-23	154.385
TENDER                    1000 gallon	III	ENG-22	154.385
TENDER                    1800 gallon	III	TANKER-24	154.385
<b>Total Number of Personnel</b>	27 FIRE PERSONNEL		
<b>Number of GFC compatible Hand-Held Radios</b>	NONE		
<b>Does dept. have a hand tool cache</b>	YES		
<b>Any Other Type of Support Equip</b>	NONE		

-----  
 General Information: RCCFD HAS GA. MUTUAL AID FREQ.  
 DEPT. HAS SHOVELS AND RAKES

**Plans Section  
Fire Plan**

<b>County</b>	<b>Date of Last Revision</b>
MADISON 095	3/11

**RESOURCES UNIT**

**Fire Department Co-operators**

Note: Fill out 1 of these resource lists for each co-operating department:

<b>Department Name</b>	COLBERT VOLUNTEER FIRE DEPARTMENT
<b>Phone # (Non-Emergency)</b>	(706) 788-9854
<b>Station Location</b>	COLBERT STATION, COLBERT, GA
<b>Type Department</b>	[Volunteer CITY /County]
<b>Radio Frequencies Available</b>	154.385
<b>Chief's Name</b>	TIM WYATT

**Tactical Equipment**

Equipment	ICS Type	Radio Call	Radio Freq.
ENGINE            1000 gallon	I	ENG-12	154.385
ENGINE            1000	III	ENG-11	154.385
TENDER            750 gallon	I	ENG-10	154.385
BRUSH TRUCK    250 gallon	111	BRUSH 11	154.385

<b>Total Number of Personnel</b>	23 FIRE PERSONNEL		
<b>Number of GFC compatible Hand-Held Radios</b>	NONE		
<b>Does dept. have a hand tool cache</b>	YES		
<b>Any Other Type of Support Equip</b>	NO		

-----  
General Information: RCCFD HAS GA. MUTUAL AID FREQ.

DEPT. HAS SHOVELS AND RAKES

**Plans Section  
Fire Plan**

<b>County</b>	<b>Date of Last Revision</b>
MADISON 095	3/11

**RESOURCES UNIT**

**Fire Department Co-operators**

Note: Fill out 1 of these resource lists for each co-operating department:

<b>Department Name</b>	COMER VOLUNTEER FIRE DEPARTMENT
<b>Phone # (Non-Emergency)</b>	706-783-3610
<b>Station Location</b>	COMER STATION, COMER, GA.
<b>Type Department</b>	[Volunteer CITY/County]
<b>Radio Frequencies Available</b>	154.385
<b>Chief's Name</b>	JOHNNY BRIDGES

**Tactical Equipment**

Equipment	ICS Type	Radio Call	Radio Freq.
ENGINE 750 gallon	I	ENG 6	154.385
ENGINE 1000 gallon	I	ENG 4	154.385
BRUSH TRUCK 300 gallon	II	BRUSH-5	154.385
TANKER 2000 gallon	III	TANKER-4	154.385
LADDER TRUCK 400 GAL		LADDER -4	154.385
SERVICE TRUCK		SERVICE 4	

<b>Total Number of Personnel</b>	23
<b>Number of GFC compatible Hand-Held Radios</b>	NONE
<b>Does dept. have a hand tool cache</b>	YES
<b>Any Other Type of Support Equip</b>	NONE

-----  
General Information: RCCFD HAS GA MUTUAL AID FREQ.

DEPT HAS SHOVELS AND RAKES

**Plans Section  
Fire Plan**

<b>County</b>	<b>Date of Last Revision</b>
MADISON 095	3/11

**RESOURCES UNIT**

**Fire Department Co-operators**

Note: Fill out 1 of these resource lists for each co-operating department:

<b>Department Name</b>	NEESE/SANFORD VOLUNTEER FIRE DEPARTMENT
<b>Phone # (Non-Emergency)</b>	706-227-2737
<b>Station Location</b>	NEESE STATION, NEESE, GA.
<b>Type Department</b>	[Volunteer County]
<b>Radio Frequencies Available</b>	154.385
<b>Chief's Name</b>	John Seagraves

**Tactical Equipment**

Equipment	ICS Type	Radio Call	Radio Freq.
ENGINE 1250 gallon	I	eng-13	154.385
TANKER 1200 gallon	I	Tanker 15	154.385
ENGINE 1000 gallon	1	eng-14	154.385
SERVICE TRUCK		SERVICE 14	

<b>Total Number of Personnel</b>	18
<b>Number of GFC compatible Hand-Held Radios</b>	NONE
<b>Does dept. have a hand tool cache</b>	YES
<b>Any Other Type of Support Equip</b>	NONE

-----  
General Information: RCCFD HAS GA MUTUAL AID FREQ.

**Plans Section  
Fire Plan**

<b>County</b>	<b>Date of Last Revision</b>
MADISON 095	3/11

**RESOURCES UNIT**

**Fire Department Co-operators**

Note: Fill out 1 of these resource lists for each co-operating department:

<b>Department Name</b>	SHILOH VOLUNTEER FIRE DEPARTMENT
<b>Phone # (Non-Emergency)</b>	706-206-9753
<b>Station Location</b>	SHILOH STATION, SHILOH, GA.
<b>Type Department</b>	[Volunteer County]
<b>Radio Frequencies Available</b>	154.385
<b>Chief's Name</b>	JEFF SEXTON

**Tactical Equipment**

Equipment	ICS Type	Radio Call	Radio Freq.
ENGINE 1250 gallon	I	ENG-26	154.385
ENGINE 750 gallon	III	ENG-25	154.385
BRUSH TRUCK 250 GAL	111	BRUSH 26	154.385
LADDER SERVICE TRUCK	111	SERVICE-26	154.385
TANKER 1800 GALLON		TANKER 26	

<b>Total Number of Personnel</b>	24
<b>Number of GFC compatible Hand-Held Radios</b>	NONE
<b>Does dept. have a hand tool cache</b>	YES
<b>Any Other Type of Support Equip</b>	NONE

-----  
General Information: RCCFD HAS GA MUTUAL AID FREQ.

DEPT HAS SHOVELS AND RAKES

**Plans Section  
Fire Plan**

<b>County</b>	<b>Date of Last Revision</b>
MADISON 095	3/11

**RESOURCES UNIT**

**Fire Department Co-operators**

Note: Fill out 1 of these resource lists for each co-operating department:

<b>Department Name</b>	POCA VOLUNTEER FIRE DEPARTMENT
<b>Phone # (Non-Emergency)</b>	706-789-2373 CHIEFS HOME #
<b>Station Location</b>	POCA STATION, POCATALIGO, GA.
<b>Type Department</b>	[Volunteer County]
<b>Radio Frequencies Available</b>	154.385
<b>Chief's Name</b>	Sonny Belk

**Tactical Equipment**

Equipment	ICS Type	Radio Call	Radio Freq.
ENGINE            1000 gallon	I	ENG-19	154.385
ENGINE            1000 gallon	III	ENG-20	154.385
ENGINE            1000 gallon	I	ENG-21	154.385
TANKER            2500 gallon	1	TANKER-20	154.385
BRUSH TRUCK    300 gallon	111	BRUSH 20	145.385

<b>Total Number of Personnel</b>	22
<b>Number of GFC compatible Hand-Held Radios</b>	NONE
<b>Does dept. have a hand tool cache</b>	YES
<b>Any Other Type of Support Equip</b>	NONE

-----  
General Information: RCCFD HAS GA MUTUAL AID FREQ.

DEPT HAS SHOVELS



**Plans Section  
Fire Plan**

<b>County</b>	<b>Date of Last Revision</b>
MADISON 095	3/11

**RESOURCES UNIT**

**Fire Department Co-operators**

Note: Fill out 1 of these resource lists for each co-operating department:

<b>Department Name</b>	CARLTON VOLUNTEER FIRE DEPARTMENT
<b>Phone # (Non-Emergency)</b>	706-797-3210
<b>Station Location</b>	CARLTON STATION, CARLTON, GA.
<b>Type Department</b>	[Volunteer CITY /COUNTY]
<b>Radio Frequencies Available</b>	154.385
<b>Chief's Name</b>	Terry Kidd

**Tactical Equipment**

Equipment	ICS Type	Radio Call	Radio Freq.
ENGINE 1500 gallon	I	ENG 18	154.385
ENGINE 1000 gallon	1	ENG 16	154.385
TANKER 1500 gallon	III	TANKER 16	154.385
BRUSH TRUCK 300 gallon	III	BRUSH 16	154.385

<b>Total Number of Personnel</b>	19
<b>Number of GFC compatible Hand-Held Radios</b>	NONE
<b>Does dept. have a hand tool cache</b>	YES
<b>Any Other Type of Support Equip</b>	NONE

-----  
General Information: RCCFD HAS GA MUTUAL AID FREQ.

DEPT HAS HAND TOOLS

**Plans Section  
Fire Plan**

<b>County</b>	<b>Date of Last Revision</b>
MADISON 095	3/11

**RESOURCES UNIT**

**Forest Industry Co-operators**

Note: Fill out one of these resource lists for each individual forestry industry co-operating on fires in this county.

<b>Company Name</b>	None
<b>Address</b>	
<b>Office Location</b>	
<b>Telephone #</b>	

**Resources Available**

**Personnel and Equipment**

Name	Company Position	ICS Position	Radio Call	Freq.	Type Equip. Assigned or Available

-----  
General Information on level of co-operation or support:

**Plans Section  
Fire Plan**

<b>County</b>	<b>Date of Last Revision</b>
MADISON 095	3/11

**RESOURCES UNIT**

**Other Fire Assistance Co-operators**

Note: Fill out one of these resource sheets for each individual other co-operating agency

Agency Name	Location	Phone #	Contact Person	Position

**Resources Available**

Resource/Personnel Available	ICS Position or Type Classification	Radio Call	Freq.

General Information on this agencies level of assistance, co-operation or support:

**Plans Section  
Fire Plan**

<b>County</b>	<b>Date of Last Revision</b>
MADISON 095	3/11

**SITUATION UNIT**

The wildland fire situation in this county will be described in this section under the headings of:

1. General narrative describing the county with relation to roads, high traffic areas, smoke sensitive areas, wildland / urban interface, railroads, access problems and unique situations. large plantations (300+acres) and past 5 yr. fire occurrence should be included in this section with maps.
2. Identification of potential complex fire incidents.
3. Location of locked gates or restricted access areas and contacts for access.

Note: A separate page may be used for #1, #2, and #3 if informational space requirements dictate.

<b>(1.) General Narrative</b>	State Hwy 72 runs length of county from east to west along side CSX railway which runs through the county giving access to fires along railroad. State Hwy. 29 runs North and South through the County giving access to the center of the County. State Hwy. 106 on the West side of County runs the full length of the County accessing the West side of the County. State Hwy. 98 runs across the center of the County from East to West with county routes connecting these roads giving full access to the County.	
<b>(2.) Potential Complex Fire Incidents</b>	Any fires in steep terrain areas could become extended attack situations because of access and terrain conditions, requiring hand crews and specialized water delivery operations. Control or mop-up problems in rocky terrain are intensified by drought conditions.	
<b>(3.) Restricted Access Areas</b>	NONE	<b>Access Contact</b>

- Maps included after this narrative: 1. Roads, high traffic areas, SSA'S, wildland/urban interface and railroads. Access problems and unique situations.
2. Potential complex fire incidents, helispots, base camps, staging areas and fixed wing bases.
  3. 5 year fire occurrence

**Plans Section  
Fire Plan**

<b>County</b>	<b>Date of Last Revision</b>
MADISON 095	3/11

**DOCUMENTATION UNIT**

All documentation of initial and extended attack situations will utilize existing GFC dispatch forms and an ICS 214 Unit Log procedures. Upon need (or incident escalation) initiate the required ICS forms for later forwarding to the documentation unit when activated. Initial incident forms should include:

1. ICS Organization chart - Type 3 fires
2. Personnel Check In/Assignment Log - Extended attack or Type 3 fires
3. Wildland Fire Incident Map - Extended attack or Type 3 fires
4. ICS Unit Logs (214) - (required on all fires)
5. ICS 201, Incident Briefing Form- Extended attack or Type 3 fires

The Incident Commander will complete these forms as required and should start early to avoid later confusion or re-organization. The forms will be supplied to all chief rangers in "Fire Incident Management" packets. The IC is also responsible for all other incident records required.

-----  
General Information: (Location / use/ procedures of unit records and logs, etc.)

<b>Name of Form or Record</b>	<b>Stored or Location at Unit Office</b>

Note: use additional pages as necessary.

**Plans Section  
Fire Plan**

<b>County</b>	<b>Date of Last Revision</b>
MADISON 095	3/11

**DEMOBILIZATION UNIT**

Demobilization of any wildland fire incident of type III or extended attack resources will take place for utmost considerations of welfare and safety of Commission and all co-operator personnel. the GFC safety policy on demobilization of personnel from incidents is as follows:

***All personnel who have been "on duty" for more than 12 hours and have more than 50 miles driving distance to home unit, will be lodged overnight in order to provide for sufficient rest before demobilization from the incident.***

All personnel , **before release from the incident**, will:

1. **Check out with supervisor** and await supervisory release and clearance from the incident.
2. **Account for and return all incident issued equipment , non-expendable supplies and required paperwork including any incident incurred lodging, meals, supplies etc., invoices or bills or reports** that were completed or required while on the incident.
3. Establish communications with off-incident home base or facility to **communicate ETD from the incident and ETA at home base.**
4. **After return to home base**, notification will be made to incident Resources Unit that the demobed personnel/equip. is "In Quarters".

A Unit Log (ICS 214) will be maintained on all demobilized resources from an incident by the demobilization unit leader.

---

Specific County Fire Plan Instructions on Demobilization:

**Plans Section  
Fire Plan**

<b>County</b>	<b>Date of Last Revision</b>
MADISON 095	3/11

**TECHNICAL SPECIALISTS**

Skilled or special support personnel/agencies that may be required on a wildland fire incident.

<b>Service or Technical Assistance Provided</b>	<b>Agency or Vendor</b>	<b>Contact Personnel and Telephone #</b>
EMERGENCY MANAG.	GEMA	JOHNNY BRIDGES 612-5168 CELL
TRAFFIC CONTROL	MADISON CO. SHERIFF	Kip Thomas 795-2101
FIRE ASSOCIATION	MADISON CO. FIRE	Marc PERRY 706-201-7160
EMERGENCY MEDICAL	MADISON CO EMS.	JASON LEWIS 795-2174
Weather Information	NOAA Weather Athens	Frequency 162.400

**Logistics Section  
Fire Plan**

<b>County</b>	<b>Date of Last Revision</b>
MADISON 095	3/11

**LOGISTICS SECTION**

The "Logistics", or Service and Support will be initiated as required by the complexity of wildland fire incidents. The district office will normally assign a "Logistics Chief" as needed to handle fire incident requirements upon request from incident command.

**SERVICE BRANCH**

**Communications Unit**

Description of county-wide communications capabilities and compatibility with GFC:  
 ALL FIRE DEPARTMENT EQUIPMENT HAS GA. FIRE MUTUAL AID FREQ.  
 FIRE DEPARTMENT FIRE FREQ. 154.385.  
 MADISON CO 911. CAN DISPATCH ALL EMERGENCY SERVICES.  
 Is county wide dispatch of emergency services in place: YES .  
 How Contacted: DISPATCHED BY PAGERS FROM MADISON CO. 911.

**Co-operating county dispatch centers are as follows:**

<b>Agency Name</b>	<b>Phone #</b>	<b>Location</b>	<b>Communications Capability</b>
MADISON CO. 911	795-2300 911	DANIELSVILLE	WITH ALL EMERGENCY SERVICES
RVFD	795-2300 911	CO. DEPTS.	"
MADISON CO, EMS	795-2300 911	DANIELSVILLE	"

<b>Name</b>	<b>Agency/Position</b>	<b>How Contacted?</b>
DAVID CAMP	DIRECTOR MADISON 911	795-2300 OR 911
RICKY HIX	ASST. DIRECTOR 911	"

Radio Frequency lists are on the following page

:



**Communications Unit  
Fire Plan**

<b>County</b>	<b>Date of Last Revision</b>
MADISON 095	1/11

Radio communications frequencies

<b>Radio Frequencies</b>		<b>Agency/User</b>	<b>Frequency Function</b>
Transmit	Receive		
159.390	159.390	Georgia Forestry Commission	Mobile - Mobile
154.280	154.280	Georgia Forestry Commission	Mutual Aid
159.285	159.285	Georgia Forestry Commission	Southeastern Compact
154.220	154.220	Elbert County	Fire Control PL 179.9
154.385	154.385	Madison County	Fire Control PL 103.5

**Communications Unit  
Fire Plan**

<b>County</b>	<b>Date of Last Revision</b>
MADISON 095	3/11

<b>FAX Numbers</b>	<b>Agency/User</b>
706-356-1193	GFC FRANKLIN UNIT

**Logistics Section  
Fire Plan**

<b>County</b>	<b>Date of Last Revision</b>
MADISON 095	3/11

**MEDICAL UNIT**

The attending medical unit for most all types of wildland fire incidents will be filled by the following emergency medical agencies: 2 AMBULANCES AT EACH LOCATION LISTED BELOW

**Emergency Medical Units**

<b>Name of Agency</b>	<b>Location</b>	<b>Radio Call</b>	<b>Freq.</b>
<b>Type Equipment</b>			
ADVANCED LIFE SUPPORT/AMBULANCE	Danielsville	95-M1	154.385
"	Comer	95-M2	154.385
"	Ila	95-M3	154.385
"	HULL	95-M4	154.385

**Hospitals**

<b>Name of Hospital</b>	<b>Phone #</b>	<b>Location</b>	<b>Type Facilities</b>
Elbert Memorial	706-283-3151	Elberton	Hospital
Athens Regional	911	Athens	Hospital and Trauma Center
DOCTORS HOSP.	911	Augusta	Hospital and Burn Center
ST MARYS	911	ATHENS	Hospital

**Life Flight (Air-Evac.) Contact 911 for present vendor**

<b>Name of Facility</b>	<b>Phone #</b>	<b>Location</b>	<b>How dispatched and response time to area</b>
Med. Service	911	Madison , Georgia	911 15 min

**Personnel who could be assigned as incident Safety Officer or assistant**

<b>Name</b>	<b>Agency</b>	<b>Phone #</b>	<b>Certification or level of ICS training</b>
JASON LEWIS	MADISON EMS	795-2174	NONE

**Other Medical unit considerations:**

**Logistics Section  
Fire Plan**

<b>County</b>	<b>Date of Last Revision</b>
MADISON 095	3/11

**FOOD UNIT**

All fireline personnel will have considerations made for **adequate and appropriate** feeding times, meals, refreshments, water and nutritional needs while involved in emergency fireline and incident assignments in this county. Co-operating agency personnel **should be considered** in any meals planning by the incident food unit. GFC policy will apply to all purchases of "Fire Emergency" food situations and a copy of the policy is included on the following page for reference by the food unit leader.

-----  
**Co-operator personnel who can serve as food unit leader on wildland fire incidents are as follows:**  
 -----

<b>Name</b>	<b>Agency</b>	<b>Phone #</b>	<b>Radio Call</b>	<b>Freq.</b>
MORRIS FORTSON	MAD.CO. COMM, OFF	795-5664		154.385
CHANDLER RAY	HARRISON RFD	795-2300		154.385

-----  
**Mobile Field Kitchen Availability is:**

<b>Name</b>	<b>Phone #</b>	<b>Location</b>	<b>Capability to feed (# of personnel)</b>
Red Cross	911	Athens	150

-----  
**Commercial contract vendors who will provide food services are:**

<b>Name</b>	<b>Location</b>	<b>Phone #</b>	<b>Type food available</b>
HARDEE'S	DANIELSVILLE	795-2577	BURGERS BKFAST.
SUBWAY	DANIELSVILLE	795-3134	SANDWICHES
ILA RESTUR.	ILA, GA.	795-2388	FULL MEAL

**Other information on food unit:**

Contracts or Memorandum of understanding outlining purchase agreements, Vendor FEI#'s, etc., can be found in the Finance Section, Procurement Unit.

**Logistics Section  
Fire Plan**

<b>County</b>	<b>Date of Last Revision</b>
MADISON 095	3/11

**SUPPORT BRANCH**

The support branch director for wildland fire incidents in county will address the supply, facilities and ground support needs as required by the complexity of the fire incident. This position will normally be filled by assigned GFC personnel with consideration for co-operator unit directors.

-----

**SUPPLY UNIT**

All supplies and materials purchased in support of fire incidents will be in compliance with GFC purchasing guidelines for fire emergencies. The supply unit leader should have utmost consideration for costs accounting and fill requests for needed supplies through GFC warehouse sources whenever possible. The GFC warehouse stock catalog for the county unit is located: IN THE UNIT OFFICE

Equipment repair and maintenance parts for the county unit equipment has been highlighted in the catalog for easy reference.

-----

Local or area vendors who routinely provide parts/services to the GFC on a charge per item/service basis.

-----

<b>Type parts/service</b>	<b>Vendor Name</b>	<b>Phone #</b>	<b>Contact Person</b>
GROCERY STORE	INGLES	706-613-5098	
GROCERY/HARDWARE	ADAMS CLOVER F.	795-2437	
CONVEINCE STORE	MARGIE'S	742-2388	
HARDWARE	MADISON CO. HARD.	795-2260	
AUTO PARTS	FIELD'S AUTO PAR	783-5122	
INDUSTRIAL DRIVE & ELECTRIC	BEARINGS, SEALS, ETC.	213-6300	DARRELL BURT

-----

Gasoline/Fuel contract vendors and a listing of county unit supplies are listed on the following page.

**Logistics Section  
Fire Plan  
Supply Unit**

<b>County</b>	<b>Date of Last Revision</b>
MADISON 095	3/11

Gasoline and Fuel Contract Vendors (State Contract or Routine Vendor)

	<b>Vendor Name</b>	<b>Phone #</b>	<b>Can vendor provide a fuel truck or dump tank to an incident?</b>
<b>GAS</b>	Acree Oil	283-1854	Yes
<b>DIESEL</b>	Acree Oil	283-1854	Yes

-----  
Briefing of supplies on hand at unit and location:  
-----

<b>Type of Supplies/Parts</b>	<b>Location at the Unit</b>
Batteries, Plow Parts, Oil, Lube, Hyd. Hose, Hose Fittings, Bulbs, Filters, Flashlight Batteries and Gloves	Storage Building

**Logistics Section  
Fire Plan**

<b>County</b>	<b>Date of Last Revision</b>
MADISON 095	3/11

**FACILITIES UNIT**

The GFC unit in county should be adequate for providing command post facilities to any wildland fire situation in the county. The GFC communications unit would also be normally located here due to agency radio capabilities and access. Pre-planned base camps, staging areas etc., are identified in the Situation Unit section of the fire plan and the facilities unit leader will need to plan for management of all activated incident facilities as outlined in the NWCG Fireline Handbook requirements.

-----  
**Alternate/Additional Command Post locations are:**

<b>Name/Agency</b>	<b>Capabilities/Description</b>	<b>Location</b>
MADISON CO. VFD	Meeting Rooms	All Fire Departments

-----  
**Pre-Planned lodging/sleeping facilities:**

<b>Name</b>	<b>Phone #</b>	<b>#of available rooms/Type</b>	<b>Location</b>
Holiday Inn Express	283-8811	As Available	GA 17 South of Elberton
Days Inn Elberton	283-2300	As Available	Elbert St. Elberton

NOTE: The facilities unit leader will make all lodging arrangements as per GFC policies. A copy of the lodging policy is on the following page.

-----  
General Facilities Unit information:

**Logistics Section  
Fire Plan**

<b>County</b>	<b>Date of Last Revision</b>
MADISON 095	3/11

**GROUND SUPPORT UNIT**

Ground support for most out-of-service resources (fuelling, service, maintenance and minor repairs) can be handled through use of the county GFC unit shop facilities. A brief description of the units repair and support capabilities is as follows:

-----  
-----  
**Personnel transit for fire-fighter and incident personnel has been arranged through:**

<b>Agency</b>	<b>Phone #</b>	<b>Type Resource</b>	<b>Times Available</b>
MADISON CO. School	795-3351	BUS 30 PASSENGER	AS NEED

**Mobile welding and field repair contract vendors are:**

<b>Vendor Name</b>	<b>Phone #</b>	<b>Type Service</b>	<b>Times Available</b>
Smith's Auto Repair	283-7231	Welding Repair	24 Hrs.
SHANE BROWN	245-2332 Pager 206-6359	REPAIRS AND WELDING	24 HRS

**Local or nearest tool/equipment rental vendors are**

<b>Name</b>	<b>Phone#</b>	<b>Type equip. available</b>	<b>Location</b>
AA RENTAL	706-353-8122	GENERAL EQUIP.	LEXINGTON RD.ATHENS
Linberg Glaze	283-7071	Tire Service	Elberton

-----  
General Ground Support Unit information:



**Finance Section  
Fire Plan**

<b>County</b>	<b>Date of Last Revision</b>
MADISON 095	3/11

**FINANCE SECTION**

Financial and costs analysis aspects of fire incidents in county will be conducted in accordance with all applicable GFC policy and procedures. Considerations will be made for initiation of the finance section units when need is identified and personnel will be assigned by the district office plans section.

**TIME UNIT**

Personnel time recording documents will be prepared utilizing existing GFC recording procedures, incident check in logs and individual unit logs (ICS form 214) to insure accountability of all time charged to the incident. Each operational period of an incident will be compiled separately. ***All miles/hours accountability for incidents of GEMA or FEMA proportions should be computed on a daily basis and submitted to the cost unit for final compilation.***

**PROCUREMENT UNIT**

The procurement unit will be responsible for administering all financial matters pertaining to vendor contracts, supply sources and purchases made in support of fire incidents. Procurement will also maintain costs accountability and receipts on lodging agreements, food purchases and all other incident specific purchases. Vendor contact and administrative information, Memoranda of Understanding agreements and landowner permission contracts are included on the following pages.

**Procurement Unit  
Fire Plan**

<b>County</b>	<b>Date of Last Revision</b>
MADISON 095	3/11

Commercial and contract service providers/vendors are as follows:

<b>Name/Address Telephone and FAX# of vendor</b>	<b>FEI#</b>	<b>Services Provided</b>

**Procurement Unit  
Fire Plan**

<b>County</b>	<b>Date of Last Revision</b>
MADISON 095	3/11

**MEMORANDUM of UNDERSTANDING**

**Whereas:** In order to assist and cooperate with wildfire suppression agencies in \_\_\_\_\_ County, I \_\_\_\_\_, hereinafter referred to as \_\_\_\_\_, do enter into agreement on the \_\_\_\_\_ day of \_\_\_\_\_, 19 \_\_\_\_\_, and agree to provide the following service and co-operation to the Georgia Forestry Commission, their agents and co-operating resources the following:

---

---

---

---

---

---

---

---

---

---

I understand that in entering into this memorandum of understanding that I am in no way legally bound or responsible for any injuries, deaths, costs, claims or damages incurred to wildfire personnel or equipment in the course of providing the above outlined service.

I also agree that I make no claim and hold harmless the Georgia Forestry Commission and their co-operators in the same considerations while involved in procurement and execution of the above outlined service while involved in wildland fire incident control, management or training.

Each party agrees that this understanding can be terminated at any time by written notification of the other and termination will take place within 30 days of such notification.

**Signed:** \_\_\_\_\_ **Date:** \_\_\_\_/\_\_\_\_/\_\_\_\_  
**Landowner/Agent**

**Signed:** \_\_\_\_\_ **Date:** \_\_\_\_/\_\_\_\_/\_\_\_\_  
**Georgia Forestry Commission**

**Title :** \_\_\_\_\_

-----

**Finance Section  
Fire Plan**

<b>County</b>	<b>Date of Last Revision</b>
MADISON 095	3/11

**COMPENSATION /CLAIMS UNIT**

All Compensation / claims arising out of wildfire incidents will be managed and reported under existing GFC policy and procedures. Injury and accident reports will be completed using the attached checklist and should be completed in a timely manner and forwarded appropriately.

The forms for accident and injury reporting are located:

Any notification of claims against the Georgia Forestry Commission will require filing of the "Notification of Claim" form which is attached at the end of this section.

-----  
The GFC panel of physicians for workman's comp. cases is as follows:

<b>Physician Name</b>	<b>Address</b>	<b>Phone #</b>
TRI-COUNTY MEDICAL CENTER	Hwy 29 NORTH DANIELSVILLE	706-795-2211
ATHENS ORTHOPEDIC CLINIC	125 KING AVE. ATHENS	706-549-1663

-----  
General information on compensation/claims:

-----  
**COST UNIT**

The cost unit will be responsible for collecting all costs data, performing costs effectiveness analysis and providing costs estimates and savings recommendations. This function will be performed in the normal course of all incident activities by considerations and activities of section chiefs and by submission of expenditures in accordance with policies/procedures on spending and purchasing guidelines.

The cost unit may be initiated upon request of incident or agency command when GFC is involved in co-operation on major incidents of FEMA levels to provide cost accounting for reimbursement and will be responsible for generating the applicable reports on incident costs.

Designated Cost Unit Leader is:

<b>Name/Agency/Home Unit</b>	<b>Address/Telephone #</b>
Gary Roberts Chief Ranger Sr. Elbert/Franklin/Hart/Madison Forestry Unit	56 New Hope Road Canon GA 30520 1-800-342-6580 FAX # 706-356-1193