

2022 Georgia Southern Pine Beetle Aerial Survey Report

Georgia Forestry Commission
Forest Health Staff

Southern pine beetle (SPB) activity continues to be very low across Georgia in 2022. Above average rainfall throughout the summer maintained healthy tree vigor, resulting in very few pine beetle spots. Flights were flown across the state in August and September for a total of 6,351 miles. Based on two-mile visibility on each side of the plane, these flights combined had visual observations on approximately 13,614,358 acres. From these surveys and landowner reports, 11 SPB spots were detected on approximately 23 acres across the state. The majority of these spots (75%) were less than one acre in size, but did have active SPB during field checks. GFC foresters reported one black turpentine beetle (BTB) spot on approximately one acre and reported seven Ips engraver beetle spots on less than one acre. Figure 1 shows the pine beetle spots and flight lines in Georgia for 2022. Local foresters visited landowners at each spot, advising them to harvest the spots or continue monitoring to determine if the spots were actively spreading. If an increase in pine beetle activity occurs this fall, GFC will continue to monitor SPB spots on the ground and by air as needed.

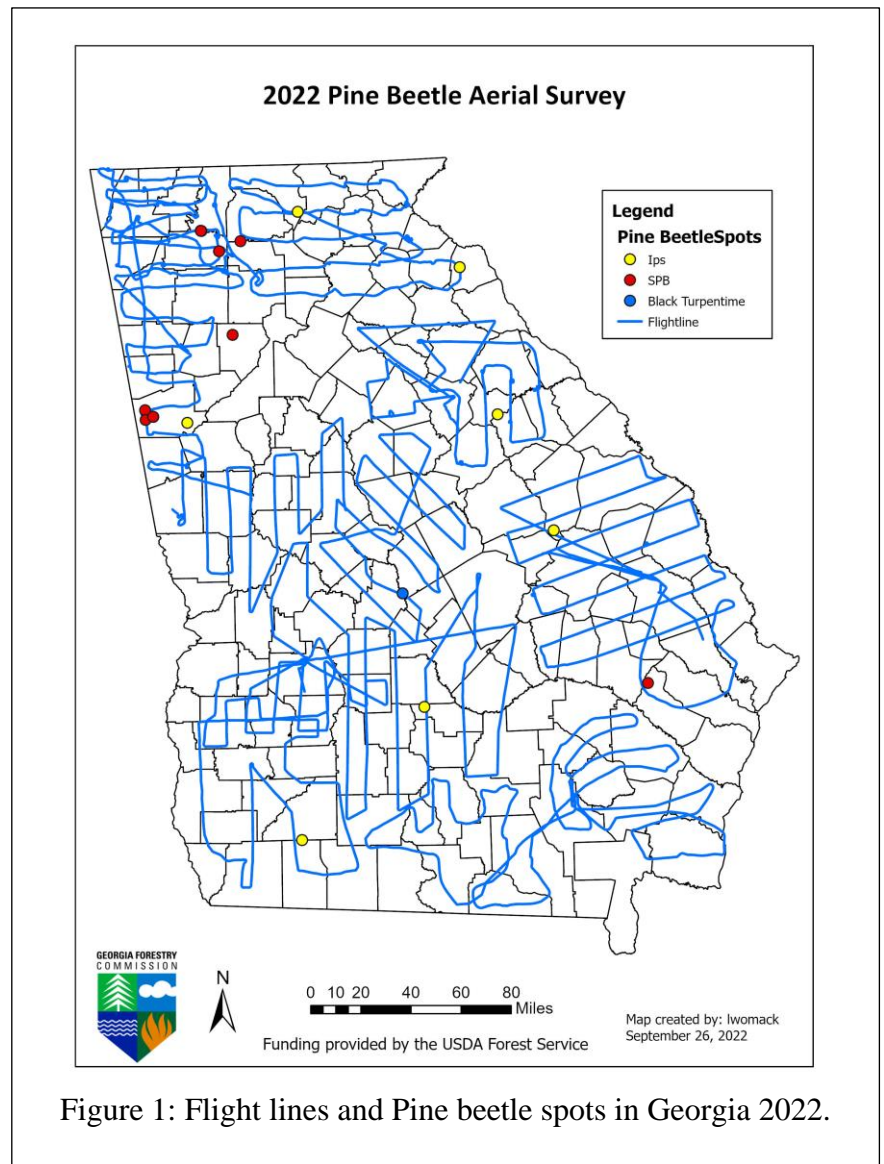


Figure 1: Flight lines and Pine beetle spots in Georgia 2022.